

# MEADOWTOWNE REALTY

E., MILTON

www.meadowtowne.com



GRE • CANADIAN CHAMPION Tuesday, February 16, 2010

## AMY flowers TEAM

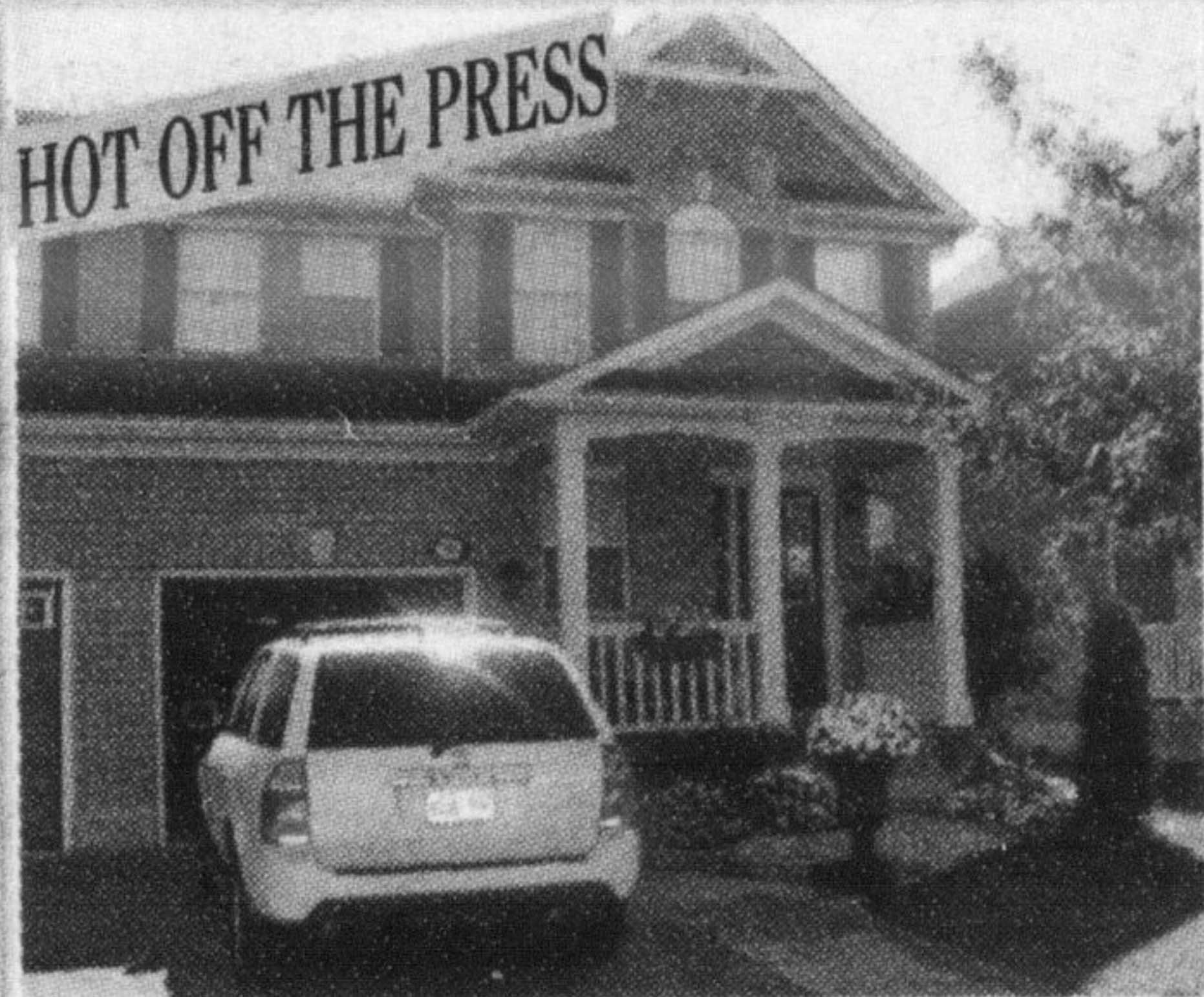
WATCH YOUR DREAMS GROW\*

Direct Line Broker

905-878-6232  
www.AmyFlowers.ca

\*Michelle Merritt Sales Rep

Busy Real Estate Team in Milton seeks sales partner. This is your chance to **earn \$75,000+ in commissions your first year.** Must be licensed. **PREVIOUS EXPERIENCE NOT NECESSARY.** Training Provided. For more information, email your request to [admin@amyflowers.ca](mailto:admin@amyflowers.ca)



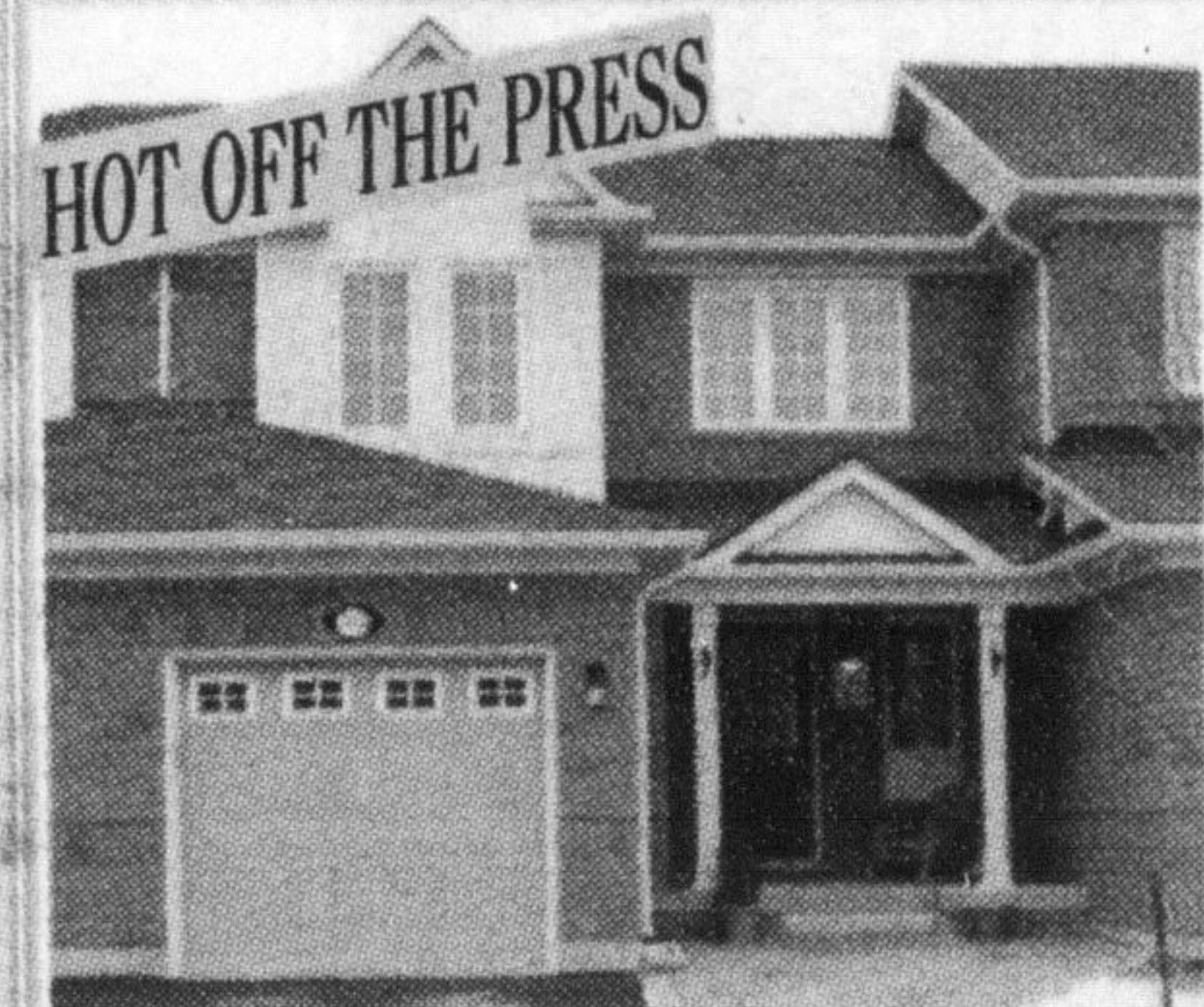
**HOT OFF THE PRESS**  
Mattamy's Coleman model (1385 sqft.) Parking for 2 cars in the driveway. Finished rec room offers more living space. Fully fenced yard has large 2 tiered deck with gorgeous gardens.

**\$339,900**



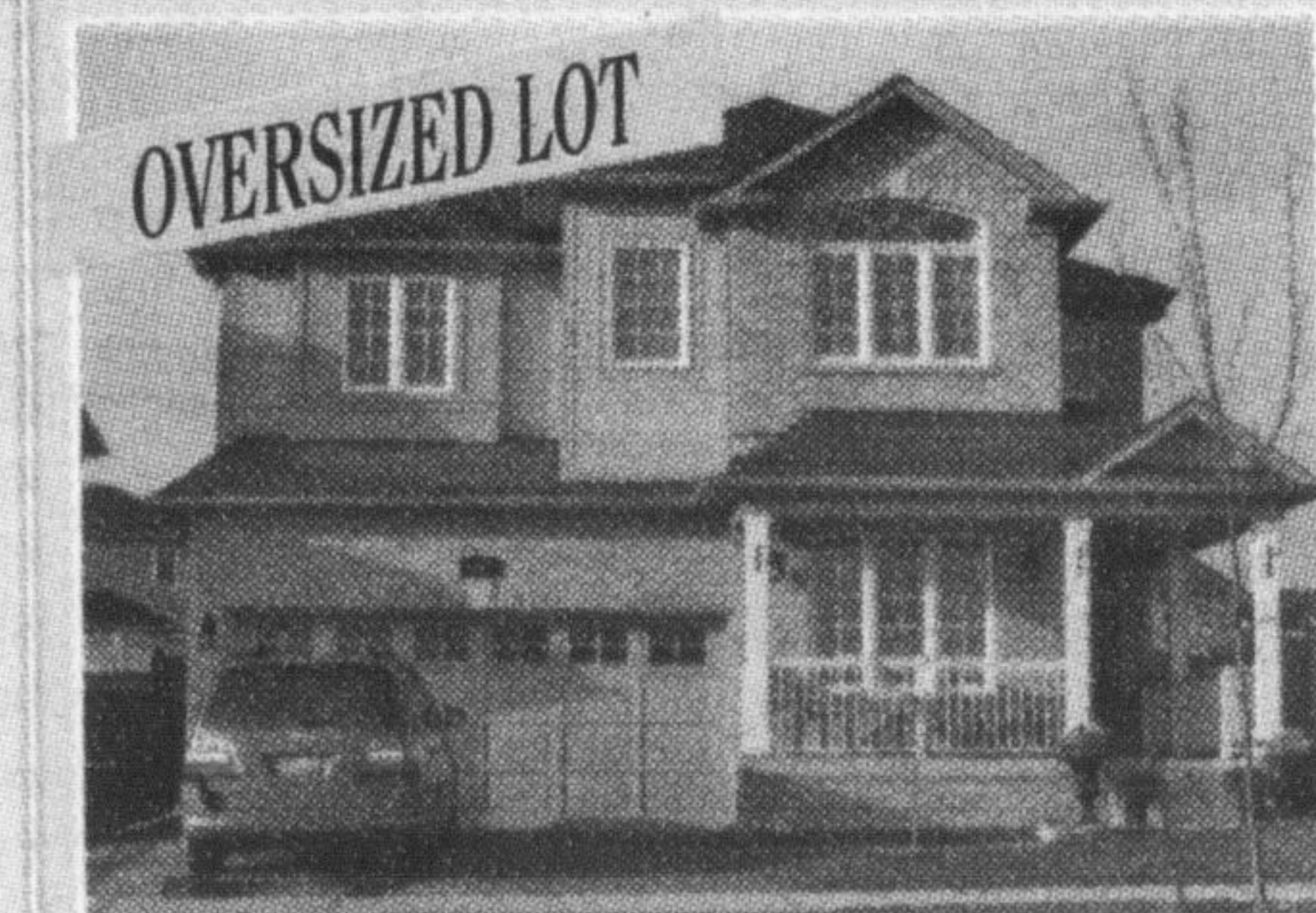
**SOLD**  
Stunning 3 bedroom townhouse with parking for 2 cars in the driveway. Gleaming dark hardwood floors & 9' ceilings on the main level. Top of the line kitchen includes stainless steel appliances, breakfast bar & backsplash. Huge master bedroom features walk-in closet & ensuite bath with soaker tub & glass enclosed shower.

**\$364,900**



**HOT OFF THE PRESS**  
Mattamy's Amesbury model (1130 sqft.) is Energy Star certified. Interlock walkway, and enclosed porch perfect for relaxing. Open concept layout includes fireplace in the living room. Master bedroom complete with walk-in closet & semi-ensuite bath.

**\$299,900**



**OVERSIZED LOT**  
Gorgeous 5 bedroom (3024 sqft.) home located across from the park. One of the largest backyards in New Milton - perfect for a pool. Stunning custom kitchen is a chef's

dream with granite counters, centre island & double glazed chocolate stained cabinets. Beautiful Brazilian hardwood on the main floor, sparkling 5 piece ensuite and so much more.

**\$629,900**

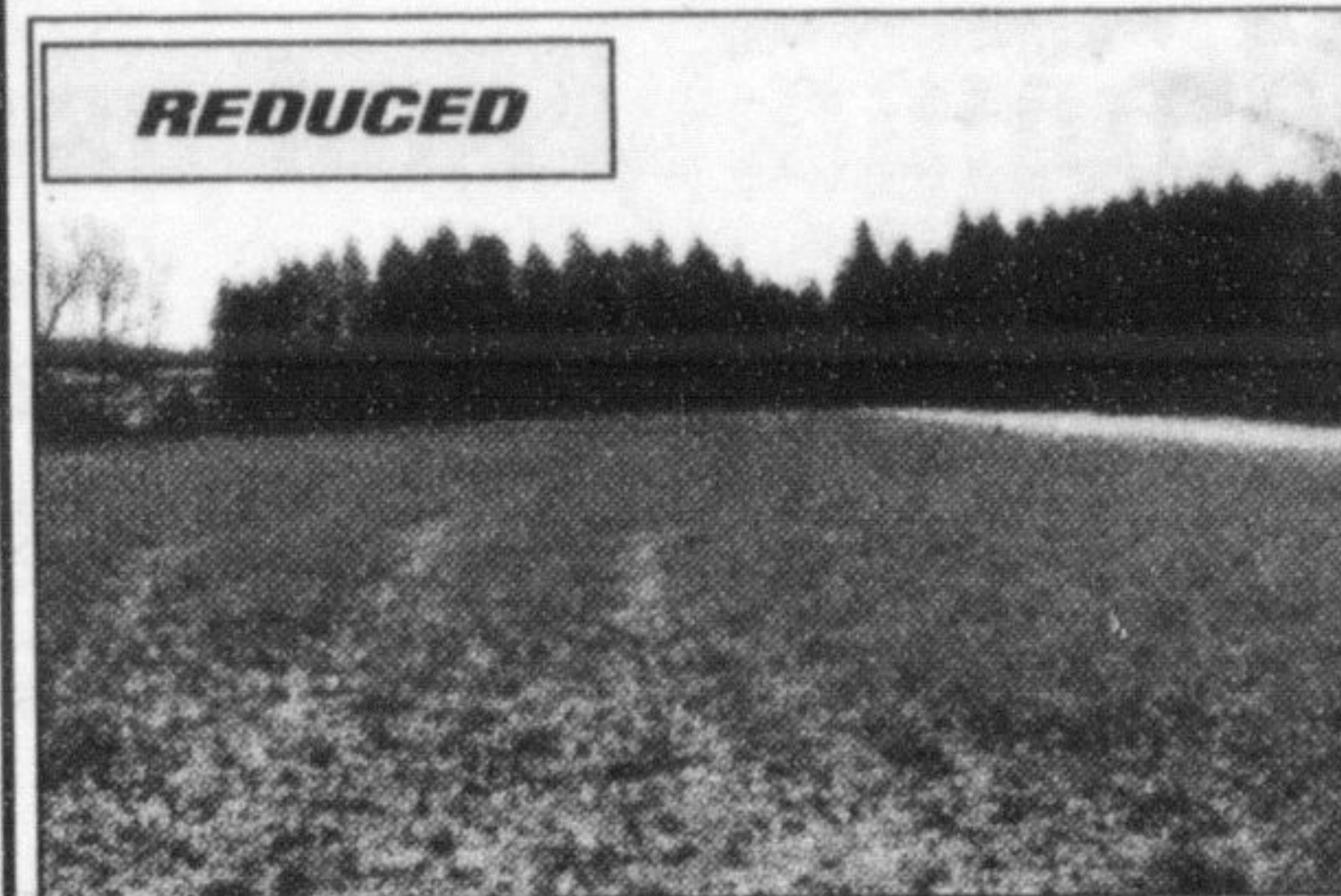
**Pat Rideout**  
SALES REPRESENTATIVE 905-878-8101  
email: [PatR@RoyalLePage.ca](mailto:PatR@RoyalLePage.ca)  
www.patrideout.ca  
Member of the Oakville-Milton, Toronto and Hamilton-Burlington Real Estate Boards



**LEASED**  
**BEST VALUE IN TOWN**  
This 3 bedroom townhouse is located in a popular complex close to schools, shopping and public transportation. Large combined living room/dining room with laminate floors and a walk-out to the rear yard.



**BUSINESS IS RELOCATING COMMERCIAL/RETAIL SPACE**  
Rare opportunity to purchase commercial/retail space in the downtown core. Great location with high visibility and traffic. Building is 2400 square feet on the main level. Zoning lends itself to a wide variety of uses. Call Pat for further details and to schedule an appointment to view. **Listed at \$699,900**



**REDUCED**  
**BUILD YOUR DREAM HOME!**  
Great size and location to build your dream country home. Just west of Guelph Line in the hamlet of Moffat, this almost 4 acre building lot has a new drilled well in place. Located across from Tuscany Ridge estate subdivision. This property is a newly created building lot - a rare find, so don't miss out on this opportunity. Call Pat for further details. **\$319,900.**

**COMING SOON**  
Fabulous 1800+ sq. ft. townhome with loads of upgrades. Great location - available March 1st. at \$1550 per month. Contact Pat for details.  
**EXPECT THE Royal Treatment**

**Sandy Del Papa**  
AN ACCREDITED "HOME STAGING" PROFESSIONAL  
93 ACRES + 2 HOUSES ON 2 ROAD FRONTAGES  
NEW PRICE \$995,000  
Make arrangements to view this 93 acre parcel. Large principle residence (approx. 3,000 sq. ft.) plus second home suitable for farm hands. Barn & drive-shed on property (need repair), huge detached workshop - great for home hobby/business. Location provides great access to Mohawk.  
See photo gallery at [www.sandydelpapa.ca](http://www.sandydelpapa.ca)

Top 1% Nationally again in 2009

## THE BRAZEAU TEAM

WWW.BRAZEAUTeam.COM

905-878-8101



Joseph Brazeau, B.A.\*



Virginia Brazeau, R.N.\*



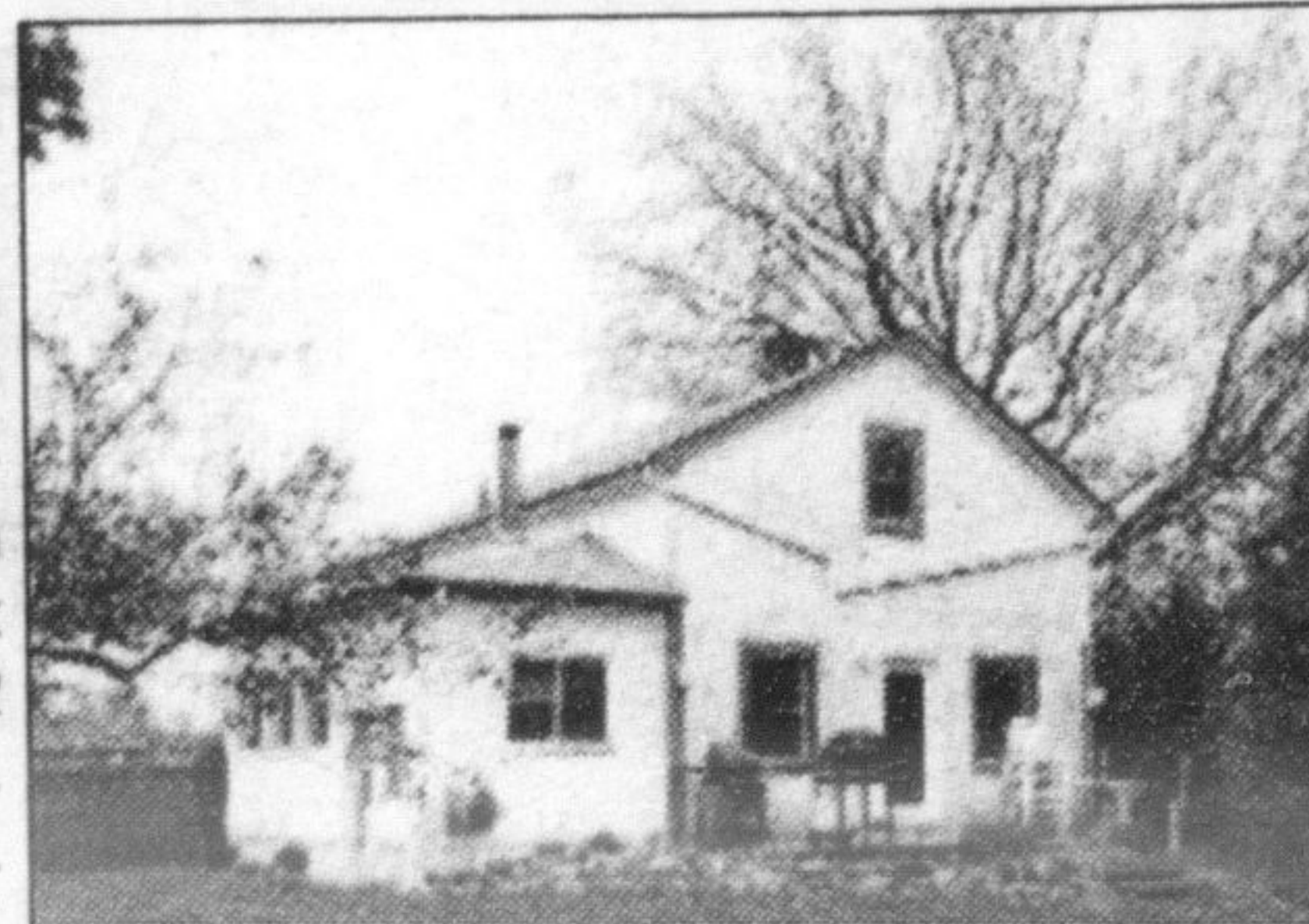
Jodie Near, B.A.\*



Kim Coulter, Sales Rep

### CHARMING 1 1/2 STOREY

3 bedroom updated home on 1/2 acre lot. Modern Galley kitchen. Separate living/diningroom. Main floor sunroom and laundry. Walkout to deck and mature lot. Separate 2 car garage with studio loft. Amazing Brookville location. Minutes to 401.



**\$359,000 BROOKVILLE**

### APPROX. 58 ACRE HOBBY FARM

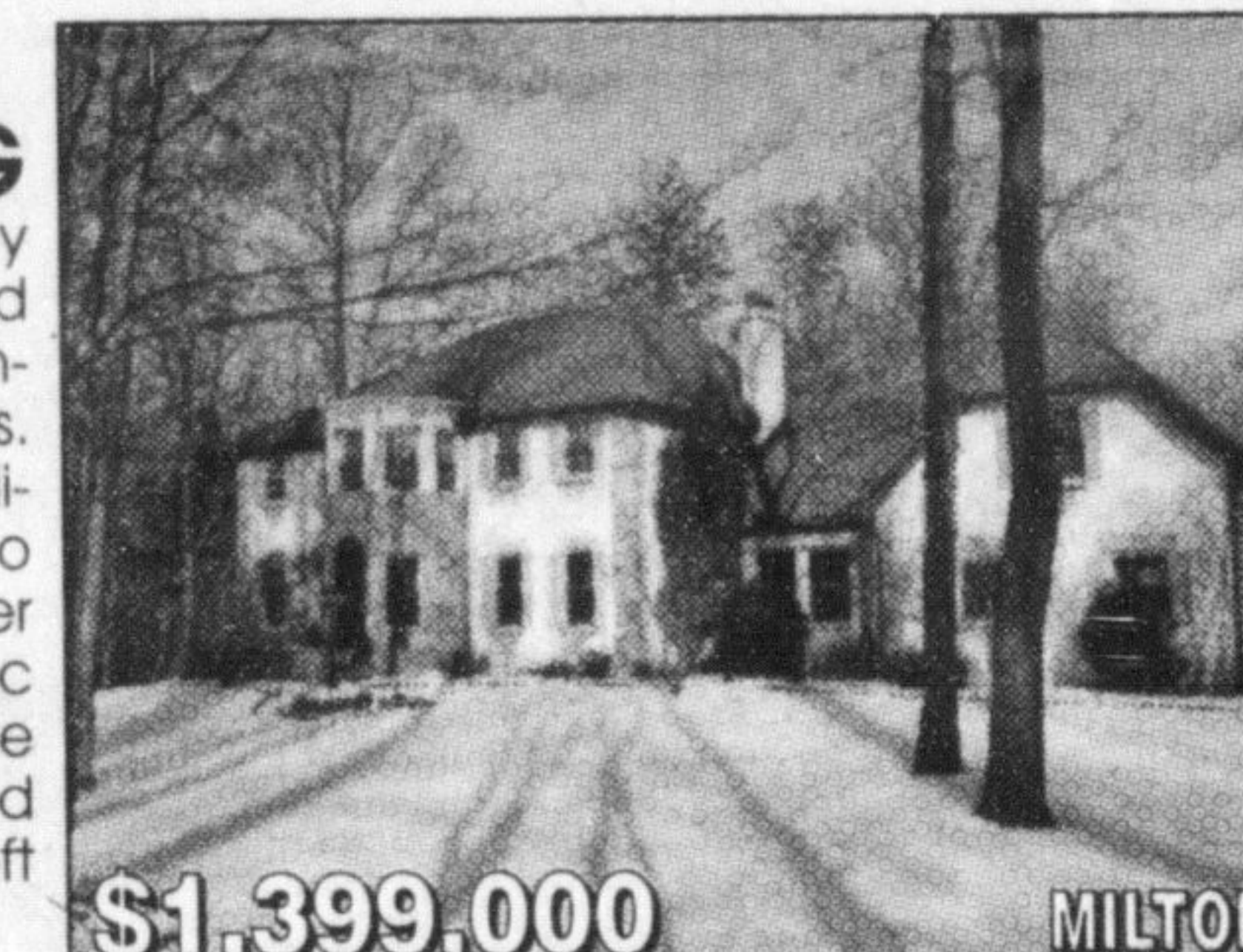
Nestled between Georgetown and Milton. Stately 2 storey, brick farmhouse set back from road with 4 bdrms., eat in kit., separate living/diningroom. Main floor familyroom and sunroom. A large barn and oversized driveway are a few of the outbuildings. Rolling lands with spring fed creek. Quick access to 401. Rare Opportunity at this price.



**\$1,499,000 HALTON HILLS**

### RARE SOUTHCOTT ESTATES OFFERING

Gated entrance to stately 5+2 bdrm Manor situated on 2.5 acres. Formal principal rooms. 6 baths. Gourmet kit with b/l appliances & walk out to Florida Room. Lrg Master w/fp & updated 6 pc bath. Nanny/inlaw suite with 4 pce ensuite. 2nd floor laundry. 3rd flr loft with gas fp.



**\$1,399,000 MILTON**

### CAMPBELLVILLE

Unique, custom built, open concept bungalow with loft. Meticulous attention to detail throughout. Main floor master with w/o to deck and gorgeous 5 piece ensuite. Stunning kitchen with granite counters & high end appliances. Beautiful mature 1 acre property steps to Crawford Lake Conservation Area and minutes to the 401 at Guelph Line make this property a must for someone who wants to enjoy all the recreation that this area offers yet still be close to highways for commuting.



**\$784,000 CAMPBELLVILLE**

## 3 EXECUTIVE BUILDING LOTS FOR SALE IN FREELTON

Build your Dream Home. Please call for more information!

For further information and photos on these properties please visit

**BrazeauTeam.com**

\* SALES REPRESENTATIVE \*\* BROKER