



**GORRUD'S AUTO GROUP**  
410 STEELES AVE MILTON, ON L9T 1Y4



- Complete meticulous hand washing and drying of vehicle exterior, including door and trunk openings
- Detailed interior cleaning including vacuuming seats and carpets
- Cleaning glass and instrument panel
- Detail floor mats
- Power washing wheels, inner fender and undercarriage
- Treatment of interior, exterior rubber and vinyl trim

FOR ONLY  
**\$59.95**  
PLUS TAX

## GORRUD'S WINTER CLEANING PACKAGE

**CARS, SUV'S AND PICKUP TRUCKS**

CALL SUSAN SILVESTRI OR JASON WILKINSON



*Milton's Premier*

USED VEHICLE DEALERSHIP  
SALES | SERVICE | LEASING



*Experience The Real Difference!*



GORRUDS.COM 1-888-854-0369



GRAHAM PAINE / CANADIAN CHAMPION

Updated signs have now been posted on James Snow Parkway, south of Derry Road, reflecting the increased speed limit from 50 km/h to 70 km/h.

## Holidays held up sign change: Region

• from COUNCILLOR on page A1 on James Snow south of Derry.

Halton regional council had previously set the 50 km/h limit on James Snow from Derry south to Britannia because that stretch of road was under construction, according to a Regional staff report. In December, council approved staff's recommendation to make the limit a uniform 70 km/h on James Snow from Britannia to Steeles.

Milton's other regional councillor, Colin Best, a member of the Halton Regional Police Services Board, said he couldn't comment on police enforcement activities, but he said running a blitz on James Snow is "within their (the service's) prerogative."

"And people still have to obey the law of what the signs are," said Best.

Asked if council should have passed the bylaw changing the speed limit before signs were ready to be installed, Best responded: "That's what I've got to find out."

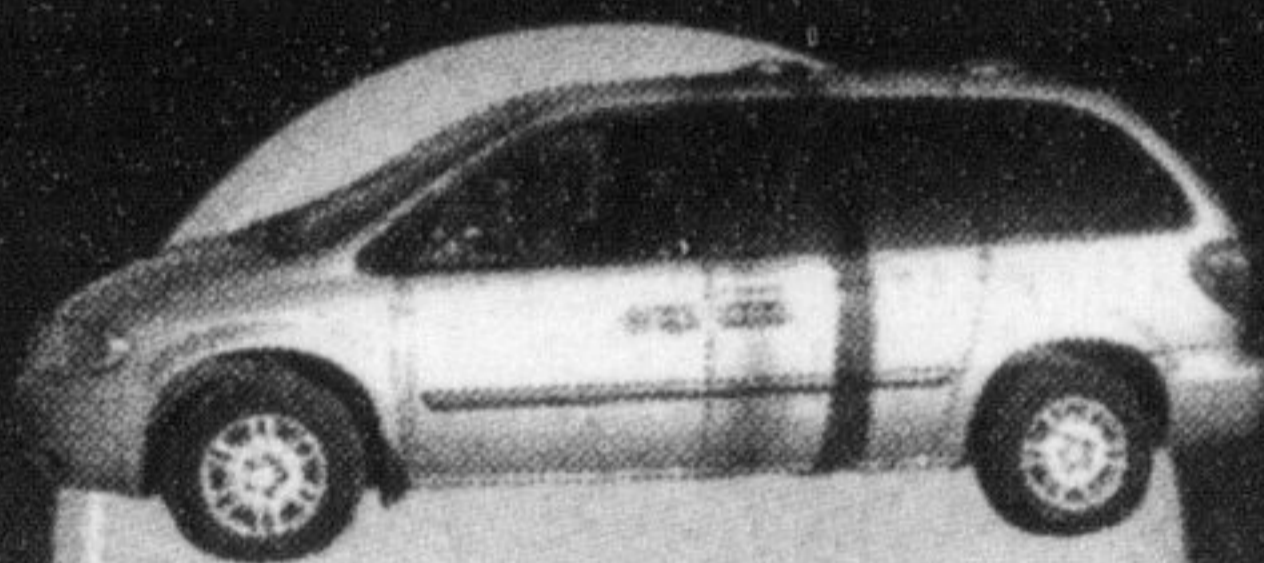
According to Tim Dennis, Halton's director of transportation services, the works department started making arrangements to change the signs on James Snow following council's approval of the new speed limit December 16.

"The completion of maintenance activities, other than emergency works, is impacted by our holiday closures, and the change-out of the signs is scheduled to be completed in the next few days," Dennis said Thursday.

Tim Foran can be reached at tforan@miltoncanadianchampion.com.



*Milton's Premier Used Vehicle Dealership*  
**GORRUD'S AUTO GROUP**  
410 STEELES AVE MILTON, ON L9T 1Y4



2007 Dodge Caravan  
**\$10,988**



2007 Volkswagen Jetta  
**\$14,290**



2006 Ford Fusion SEL  
**\$14,988**



2007 Chrysler PT Cruiser PT  
**\$8,988**



2009 Nissan Altima 2.5S  
**\$17,988**



2009 Hyundai Accent  
**\$11,988**



2006 Volkswagen Jetta TDI Diesel  
Leather/Moonroof  
**\$16,988**



2005 Buick Terraza  
**\$10,988**



2005 Toyota Matrix  
**\$10,988**

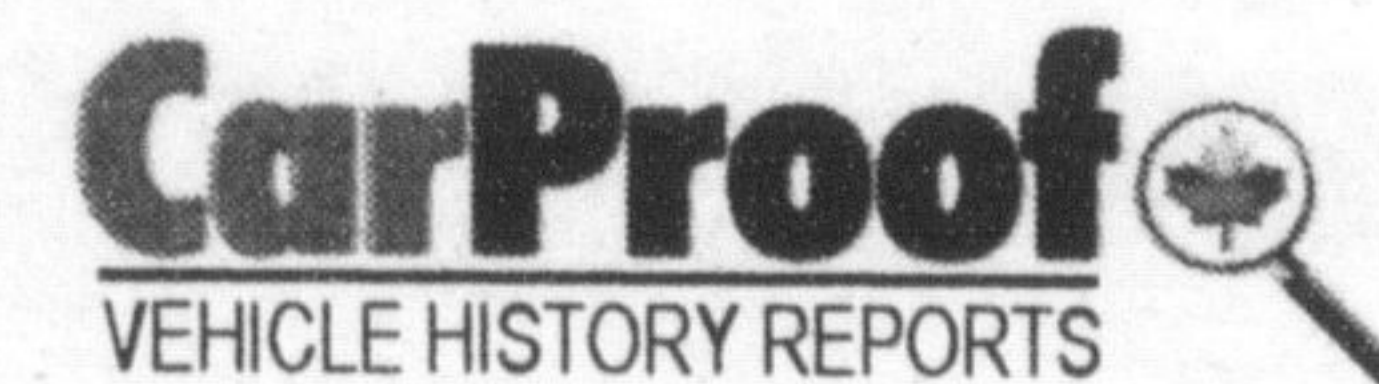
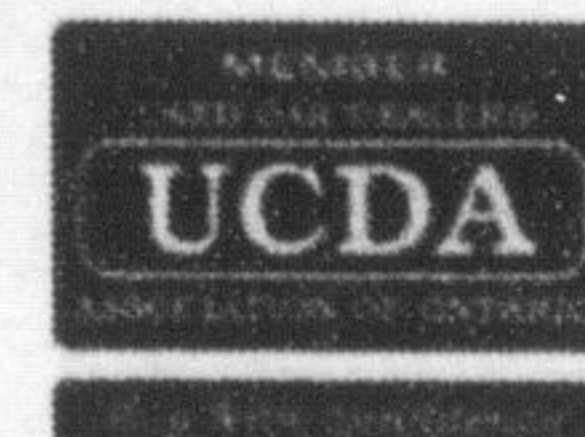


2006 Mazda 3  
Leather/Moonroof  
**\$14,988**



*Milton's Premier*

USED VEHICLE DEALERSHIP  
SALES | SERVICE | LEASING



*Experience The Real Difference!*

GORRUDS.COM

1-888-854-0369