


# GALLINGER LINCOLN

**HURRY**  
OFFER ENDS DEC. 31ST!  
**EXTENDED**  
UNTIL JAN. 4TH!

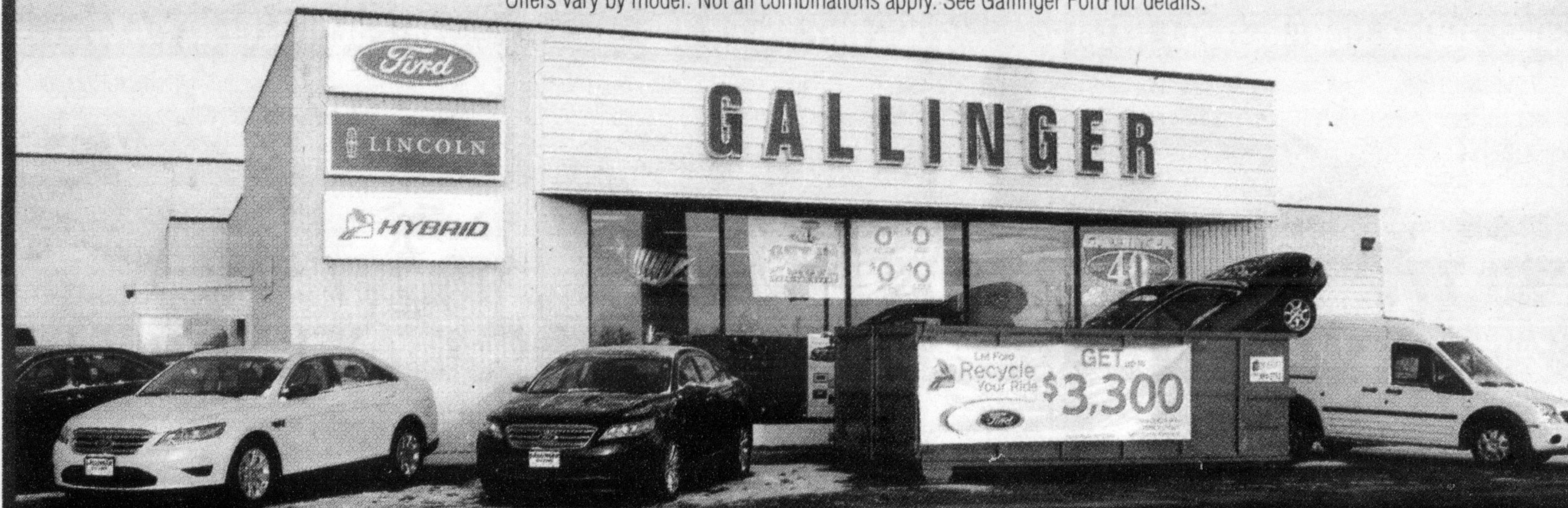
**Boxing**  
**Week Hours**  
Dec. 29 - 30: 9am - 8:30pm  
Dec. 31st: 9am - 3pm

  
**GET IN  
and DRIVE**  
**YEAR-END EVENT**


THIS SEASON, WE'RE MAKING IT EASY TO GET IN  
AND DRIVE THE BEST VEHICLE WE'VE EVER BUILT.

**\$8,000** IN PRICE ADJUSTMENTS OR **0%** PURCHASE FINANCING UP TO 60 MONTHS **\$0** DOWN PAYMENT **\$0** DUE AT DELIVERY PLUS **\$0** 1ST MONTH PAYMENTS

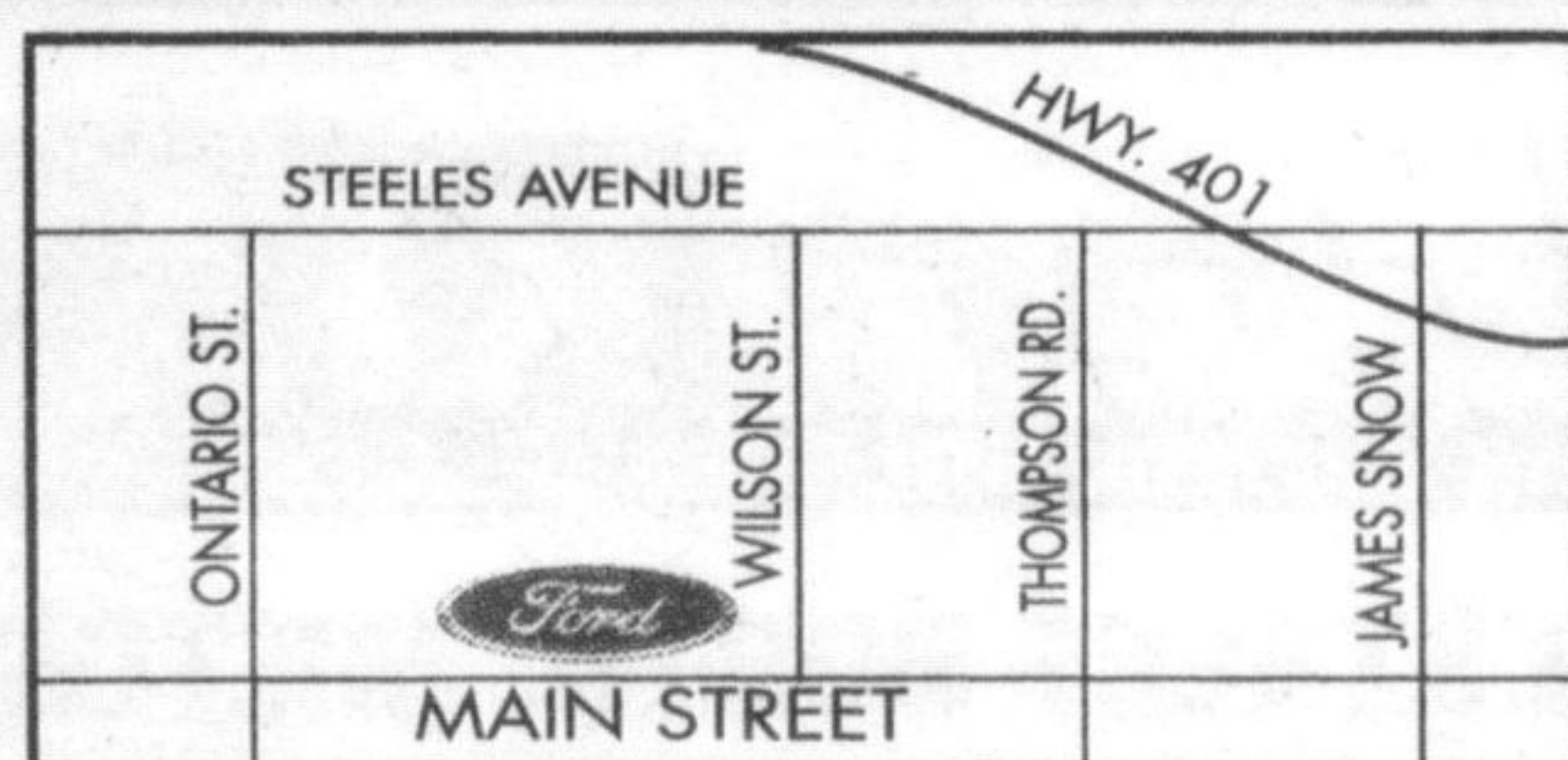
Offers vary by model. Not all combinations apply. See Gallinger Ford for details.



## CHECK OUT OUR PRE-OWNED DEALS! LIMITED TIME OFFER!

<p><b>2005 LINCOLN LS</b></p>  <p>3.0L V6, auto, climate control, pw, pdl, pm, sunroof, leather, traction control, loaded. Only 78,292km. Stk#2917A</p> <p><b>\$2,500 DOWN</b> <b>\$149</b> /Bi-weekly</p>	<p><b>2006 F150 S/Crew XTR 4x2</b></p>  <p>4.6L V8, auto, a/c, pw, pdl, pm, alum wheels, running boards, cruise, tilt, only 63,696km. Stk#2897A</p> <p><b>\$2,000 DOWN</b> <b>\$219</b> /Bi-weekly</p>	<p><b>2004 TOYOTA Camry LE</b></p>  <p>2.4L 4cyl, auto, A/C, pw, pdl, pm, cruise, tilt, only 107,389km. Stk#D10013A</p> <p><b>\$1,000 DOWN</b> <b>\$149</b> /Bi-weekly</p>	<p><b>2009 Lincoln MKX</b></p>  <p>3.5L V6, auto, A/C, pw, pdl, pm, sunroof, only 14,518km, balance of Lincoln factory warranty. St#2955A</p> <p><b>\$4,500 DOWN</b> <b>\$379</b> /Bi-weekly</p>	<p><b>2007 Ford Focus ZX5 SES</b></p>  <p>2.0L, 4 cyl, 5 spd manual, AC, PW, PDL, PM, Balance of Factory Warranty, Only 26,402 kms, Stk# 2934A</p> <p><b>\$1,000 DOWN</b> <b>\$149</b> /Bi-weekly</p>
---	---	--	---	--

SALES • LEASING • SERVICE • PARTS



 Drive One.  
**905 875-FORD**  
www.gallingerford.com



655 MAIN STREET EAST, MILTON, ONTARIO

DIRECT PARTS LINE 905.875.0111

\*Payments include PST & GST & GI. Based on 60 months, 7.97% OAC. Limited time offer. GET IN AND DRIVE promotion does not include pre-owned vehicles. See Dealer for Details.

## Town looks to connect roadways

Town council recently authorized staff to enter into an easement agreement with a private landowner so the municipality can join together two ends of a roadway that has been split into separate cul-de-sacs with the same name for years.

"This will finally allow us to open the road and make it safer to residents," said area Councillor Paul Scherer, referring to Andrews Trail located east of Thompson Road and immediately south of the CN/GO railway tracks.

Andrews Trail residents have complained the disconnected pieces of the road have caused confusion for emergency responders.

Town Engineering Services Director Paul Cripps said the municipality is currently waiting for the landowner to review and sign the easement documents. Once the Town receives them (it's not known at this point when that may happen), he said the roadway could be open in about a week.

Designed to be a U-shaped roadway, Andrews Trail has been in a state of limbo since the two straight-aways of the road were built as part of the Shipp South subdivision in the middle years of this decade. The municipality planned for the property owner and developer north of Shipp, Beverly Hills Estates, to build the curved portion of the roadway as it built its townhouse subdivision.

Though Beverly Hills completed the underground servicing and road base construction, it never went ahead with its development and asphalt was never applied to the roadbase.



THE HOUSE OF DAVID, MILTON

Cordially invites you to a Watch Night Service

From Recession to Possession

Welcome 2010 with Prayer

Venue: Milton Senior's Activity Center, 500 Childs Dr. Milton  
Date: Dec 31, 2009 Time: 10:30PM-12:15AM Tel: 647-999-3562

**Milton Moms**

Over 5,000 members

Come join our special online community!

www.MiltonMoms.net