

green living

DelRidge introduces Canada's greenest residential condominium

It's a revolutionary building, the first ever of its kind in Canada and perhaps even in the world - a building with zero carbon emissions. Appropriately dubbed GreenLife, this latest in a series of innovative projects from Del Ridge Homes is the brainchild of Dave de Sylva and George Le Donne, owners of Del Ridge Homes Inc.

GreenLife may not be Del Ridge's first eco-friendly building but it's certainly a breakthrough when it comes to sustainability and saving money for its residents. Del Ridge's previous eco-friendly building initiative, Appleby Woods in Burlington, was constructed with the some of the latest in energy saving and energy producing technology and building materials as well as Ontario's largest privately owned solar array for a residential building. Del Ridge has now been inspired to go even further with its evolutionary new project GreenLife. "When we designed Appleby Woods, we wanted to create the most energy efficient building on the market so we developed our own proprietary green building program - Enerbuild 7000" says

George Le Donne. "Now with GreenLife in Milton we've even exceeded our Enerbuild 7000 standards with a new Enerbuild 7000e program."

GreenLife will deliver zero carbon emissions through energy saving measures, energy conservation techniques and energy producing measures such as ground source heating and cooling, grid tied electricity from wind turbines, and grid tied electricity from roof solar arrays ICF construction technology, European split lighting system and solar parking lot-lighting. "The green energy income stream will produce revenue on a yearly basis which can be used to offset most of the maintenance of the building," added Dave de Sylva.

GreenLife will be a six storey building with approximately 160 units starting from \$189,900 for a 1 bedroom plus den and unit sizes go up to 1350 square foot a 3 bedroom suite. Even the location was chosen with sustainability measures in mind. The site, located in downtown Milton, is within walking distance of all



GreenLife will be a six storey building with approximately 160 units starting from \$189,900.

amenities, shopping and transportation. Even transportation for commuters was taken into consideration with this location, as the GO Station is a two-minute walk from the site.

About Del Ridge Homes

Building communities of distinction by following the incomparably high standards set by the company's principals. It's a simple philosophy but one that has resulted in the creation of some of the most successful communities across the Greater Toronto Area, including ones in

Brampton, Mississauga, Thornhill, Milton and Markham to name but a few. What truly sets Del Ridge Homes apart is the ability to offer new homebuyers quality and new home value seldom found in today's new home market. Thanks to their vast reservoir of homebuilding knowledge and experience, Del Ridge has gained great insight over the years and have provided not just what the public wants, but what the planet needs. Exceeding customer expectations time and time again.

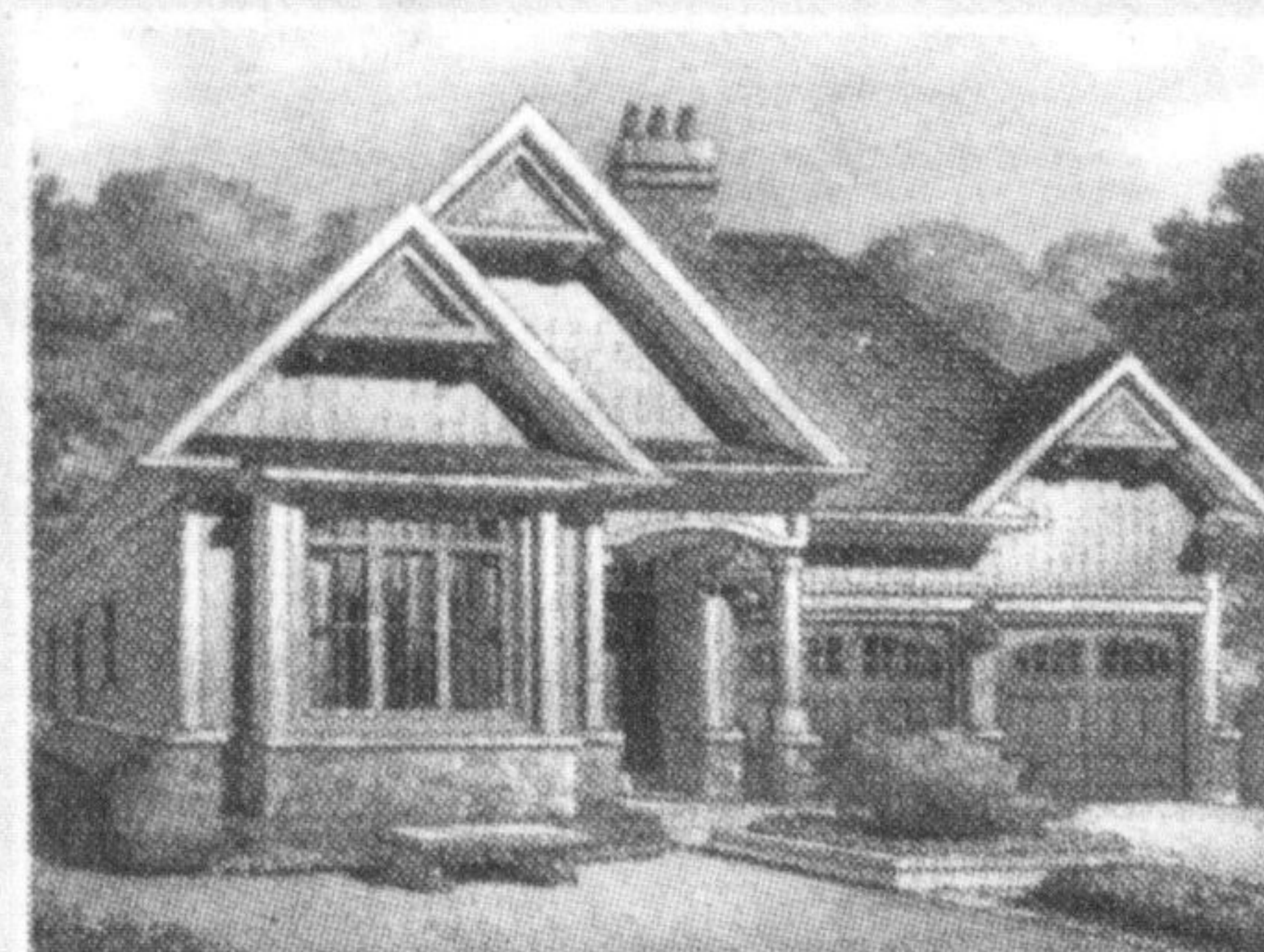
For more information please contact: Dave de Sylva, (905) 479-5448.



THE MEADOWS
of ABERFOYLE

Only 6 HOMES REMAIN in this Award Winning Private Community

- 50' Executive Bungalows
- Minutes from the 401
- FINISHED... Landscaped Entrance Feature
- FINISHED... Putting Green
- FINISHED... Parkette and Walking Trails
- Incredible Standard Finishes



MON-THURS: 1-7PM | WEEKENDS & HOLIDAYS: 11-6PM | FRI: BY APPOINTMENT

From \$379,900 1-877-216-2223 meadowsofaberfoyle.com

