

Look for your Covers flyer in today's paper

Covers
Window Fashion & Bedding Experts™

HOLIDAY SAVINGS EVENT

SHADE-O-MATIC® SHADES and SHUTTERS

FREE INSTALLATION* ON POLY-SATIN SHUTTERS

UP TO 20% EXTRA SAVINGS

Roman Shades by Covers

Shutter Shades by Covers

SAVE 10% on selected items SAVE 20% on selected items

Selected Area's

Festive parade of lights at Country Heritage Park

Country Heritage Park is getting ready to start its engines and flick on holiday cheer with next weekend's Heritage Parade of Lights.

The park will sparkle with festive lights during the annual parade, which will take place tomorrow and Sunday. Gates will open at 5:30 p.m.

each day, with the parade kicking off at 6 p.m.

Country Heritage Park is located at 8560 Tremaine Rd.

More than 30 tractors and pieces of vintage farm machinery decorated with colourful lights will start their journey through the roads of the park's rural heritage village.

"What makes this parade special is that guests can see the whole parade move at once," said Reg Cressman, general manager of the park.

Floats are made by dedicated volunteers.

Once again, the parade will be led by Halton Regional Police, Milton Fire Department and St. John Ambulance.

Following the parade, everyone is invited to the heated Gambrel Barn for cookies and hot drinks.

Santa and Mrs. Claus will be on hand to receive holiday wish lists, and tractor-drawn wagons will take guests for a close-up look at parade floats and the many heritage buildings decorated for the season.

Admission is a voluntary cash donation. Proceeds will go to support the park's ongoing educational programs.

cineplex entertainment

Galaxy Milton

1175 MAPLE AVE. T.905-864-1666

WHEELCHAIR ACCESS • PARTY ROOMS

STADIUM SEATING • 8 SCREENS

Advance tickets available at Cineplex.com

2012 (14A) (DISTURBING CONTENT, LANGUAGE MAY OFFEND, VIOLENCE)
NO PASSES FRI-SUN 2:00, 6:30, 10:00; MON-THURS 6:30, 10:00

2012 (14A) (DISTURBING CONTENT, LANGUAGE MAY OFFEND, VIOLENCE)
RWBC/DVSB; NO PASSES FRI-SUN 12:30, 4:10, 8:00; RWAC/DVSA, NO PASSES MON-THURS 8:00

DISNEY'S A CHRISTMAS CAROL 3D (I)
DIGITAL 3D, NO PASSES FRI-SUN 1:00, 4:00, 7:00, 9:30; MON-THURS 7:00, 9:30

THE FOURTH KIND (14A) (DISTURBING CONTENT) FRI-SUN 1:10, 4:15, 7:10, 9:50; MON-WED 7:10, 9:50; THURS 7:10

THE MEN WHO STARE AT GOATS (14A) (COARSE LANGUAGE, SUBSTANCE ABUSE) FRI-SUN 1:20, 4:20, 7:15, 9:40; MON-THURS 7:15, 9:40

THE MEN WHO STARE AT GOATS (14A) (COARSE LANGUAGE, SUBSTANCE ABUSE) STAR & STROLLERS SCREENING THURS 1:00

MICHAEL JACKSON'S THIS IS IT (PG) FRI-SUN 12:50, 3:50, 6:50, 9:35; MON-THURS 6:50, 9:35

MICHAEL JACKSON'S THIS IS IT (PG) STAR & STROLLERS SCREENING THURS 1:00

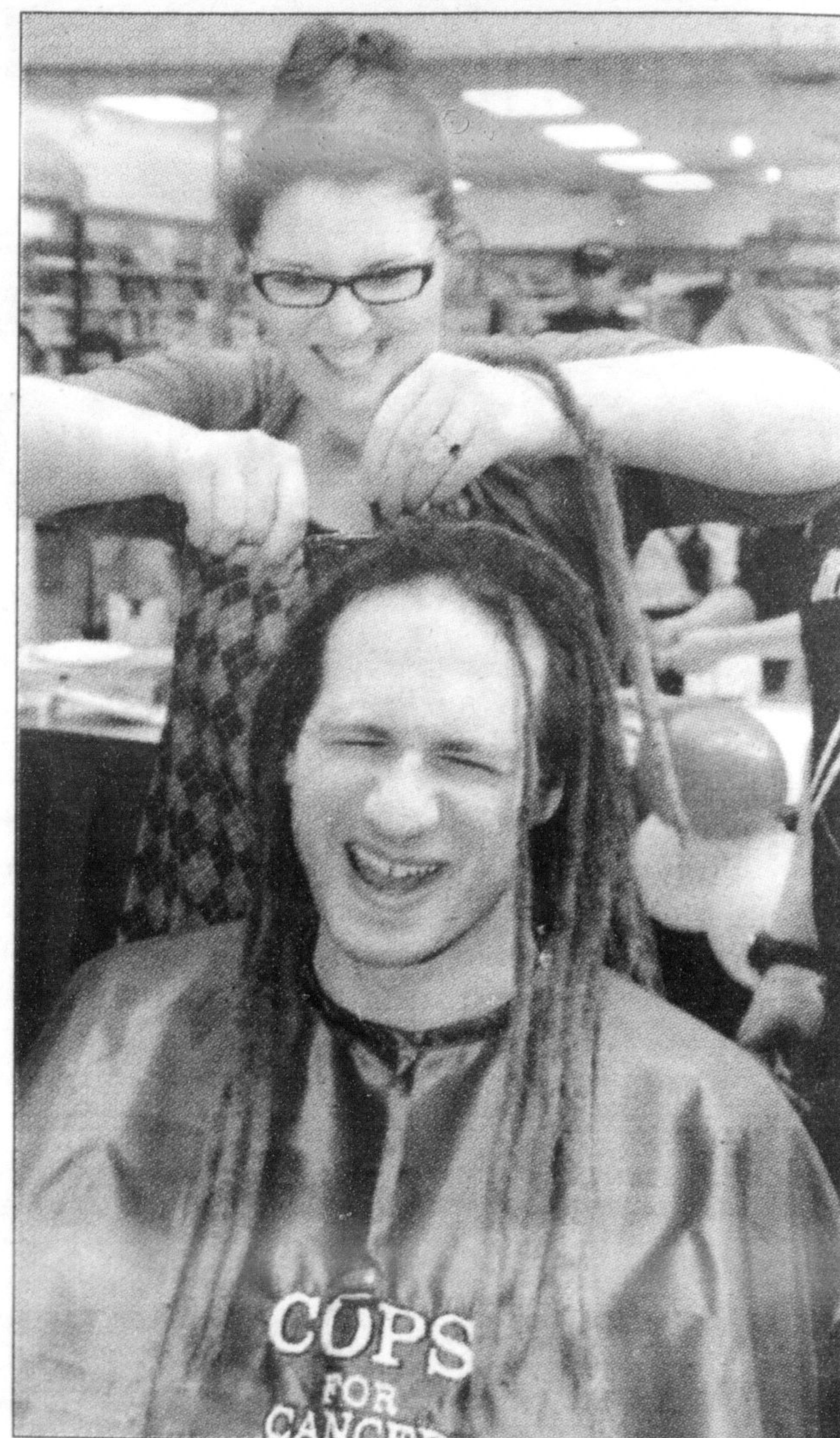
WHERE THE WILD THINGS ARE (PG) (FRIGHTENING SCENES) FRI-SUN 12:40

PARANORMAL ACTIVITY (14A) (DISTURBING CONTENT, COARSE LANGUAGE, FRIGHTENING SCENES) FRI-SUN 1:30, 4:30, 7:20, 9:45; MON-THURS 7:20, 9:45

THE BOY IN THE STRIPED PAJAMAS (14A) (DISTURBING CONTENT, MATURE THEME) FRI-SUN 3:40, 6:40, 9:20; MON-WED 6:40, 9:20; THURS 6:40

THE TWILIGHT SAGA: NEW MOON (PG) (FRIGHTENING SCENES) ADVANCED PREVIEW, NO PASSES THURS 10:00, 10:15

Showtimes for Friday November 13, 2009 to Thursday November 19, 2009



GRAHAM PAINE / CANADIAN CHAMPION
SHEDDING THE DREADS: Josev Biggar reacts as sister Mary Jane snips one of his dreadlocks during the Canadian Cancer Society's community head shave and hair donation at Milton Mall Saturday. One of many to donate their hair to the worthy cause, Biggar raised more than \$8,000 in pledges to lose his trademark dreads.

NAJIB JEWELLERS

RETAILER & WHOLESALE OF STERLING SILVER JEWELLERY, ANTIQUE JEWELLERY AND BEADS FROM AROUND THE WORLD.

GRAND OPENING

Najib Jewellers has been in wholesale since 1985. Besides doing wholesale, for the first time we have opened our own jewellery and bead store in Milton for the public. Our exotic jewellery is handmade, sterling silver with semi precious stones.

Some of the stones we carry are garnet, carnelian, lapis, pearl, malachite, turquoise, amethyst, green amethyst, black onyx, tigers eye, labradorite, rainbow moonstone, rose quartz, smoky quartz, lemon quartz, ruby, emerald, blue sapphire, ruby zosite, jasper, jade, citrine, mystic topaz, and larimar.

We have travelled to India, Thailand, Nepal,

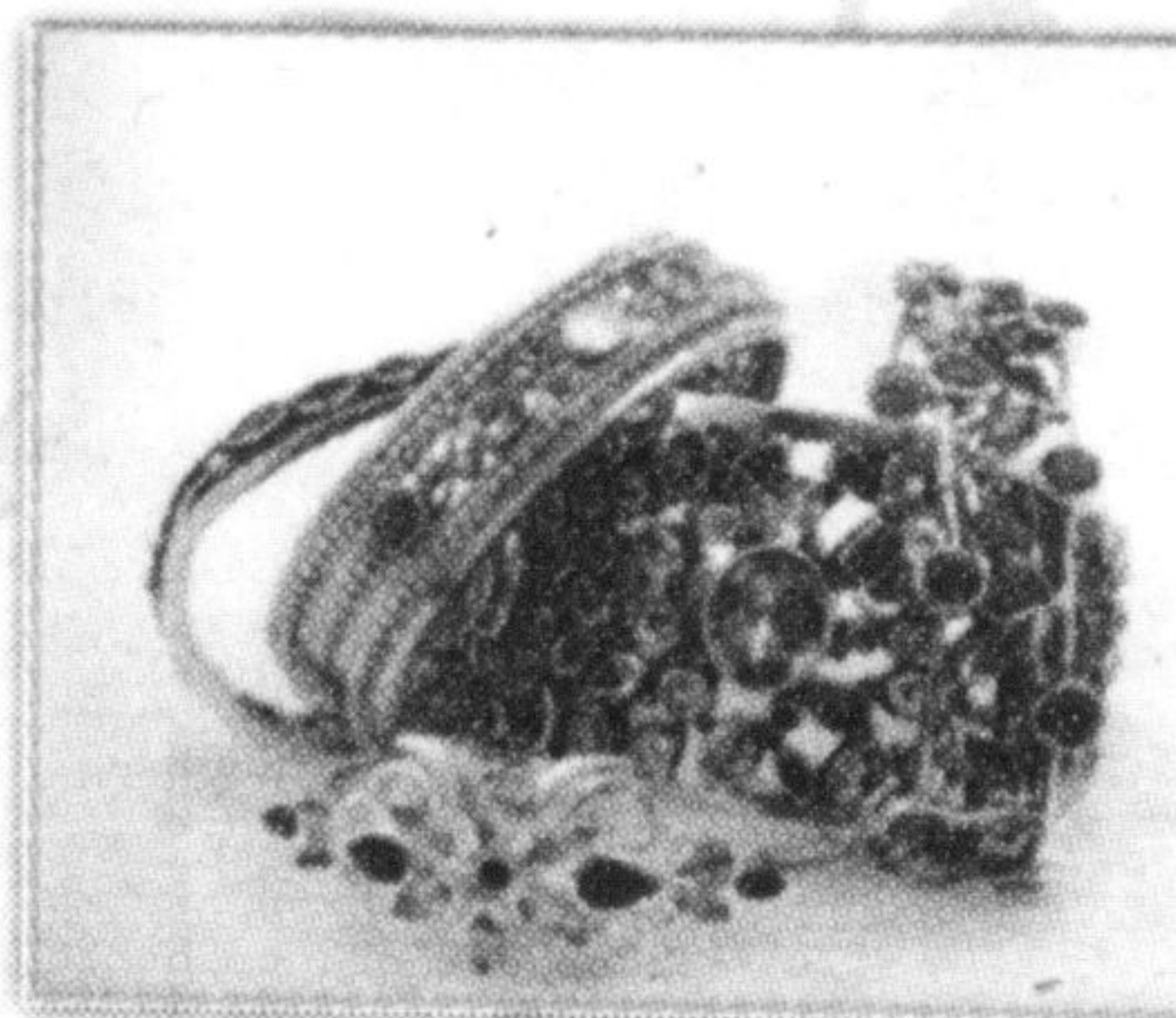
Indonesia, Turkey and Afghanistan to buy these jewellery and beads directly from the jewellers who make it, so we can offer to the public far better prices than any other jewellery store in North America.

We also carry all kinds of sterling silver beads, findings, semi precious beads, antique silver

WITH THIS COUPON

10% OFF ANY ITEM

EXPIRES DECEMBER 24, 2009



jewellery, beads, tapestry, earrings, rings, bracelets, necklaces, pendants, chains, hoops, studs, cuffs, toe rings and much more!

Please, come see us at our store -

We promise you won't be disappointed!

**15 Martin Street, #5
Carriage Square,
Downtown Milton**

**T: 905-875-9992
F: 905-875-2598**