

MEADOWTOWNE REALTY

E., MILTON

www.meadowtowne.com

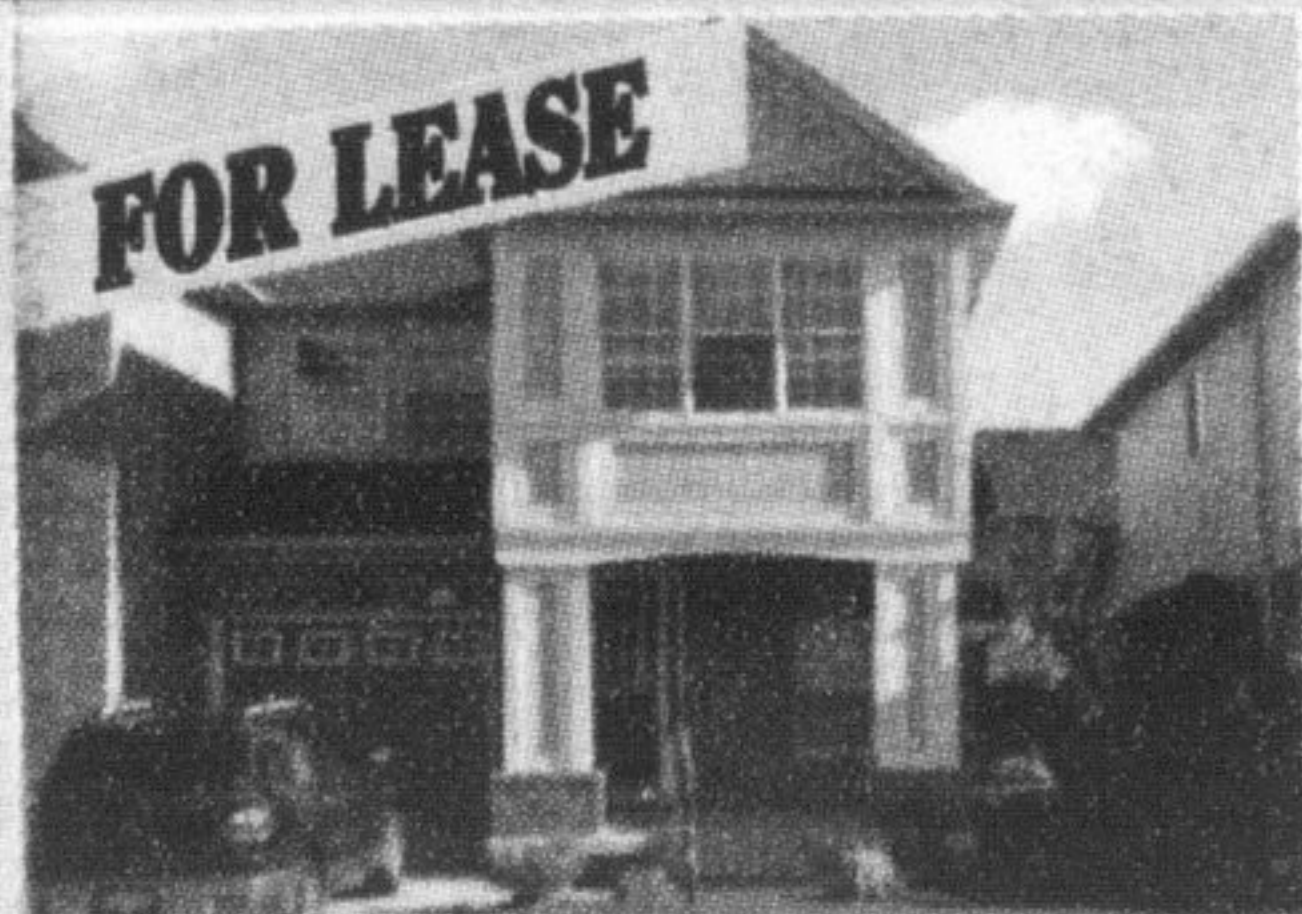


GRE • CANADIAN CHAMPION Wednesday, October 28, 2009

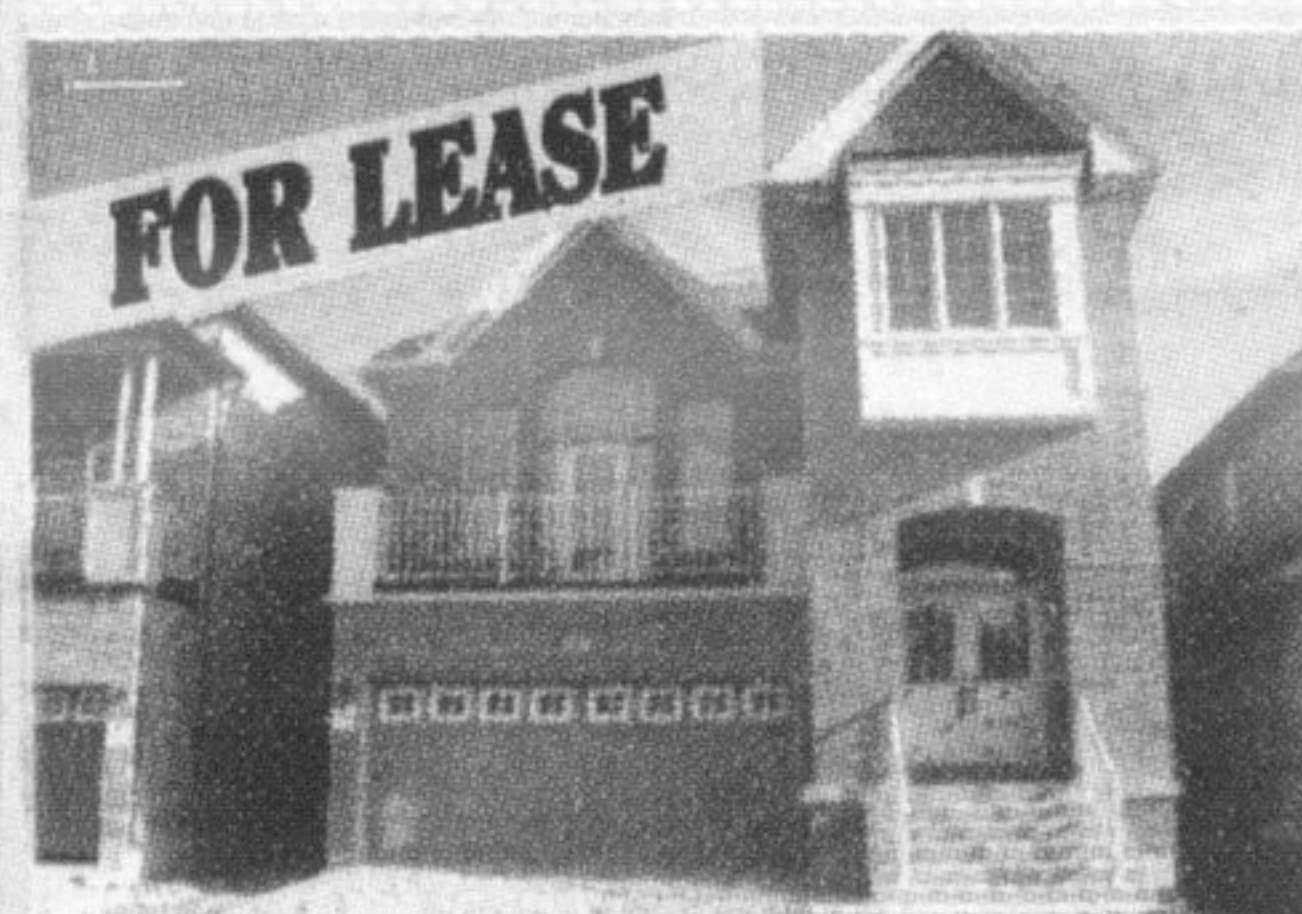
AMY flowers

WATCH YOUR DREAMS GROW™
Broker

Direct Line 905-878-6232
www.AmyFlowers.ca



FOR LEASE
Mattamy's Croftside model with finished basement. Hardwood floors, gas fireplace and much more. Perfect for any family.
\$1,550/Month



FOR LEASE
Fieldsgate 4 bedroom Chester model (2411 sqft.) Large eat-in kitchen has centre island. Master bedroom with walk-in closet and ensuite bath.
\$1,750/Month



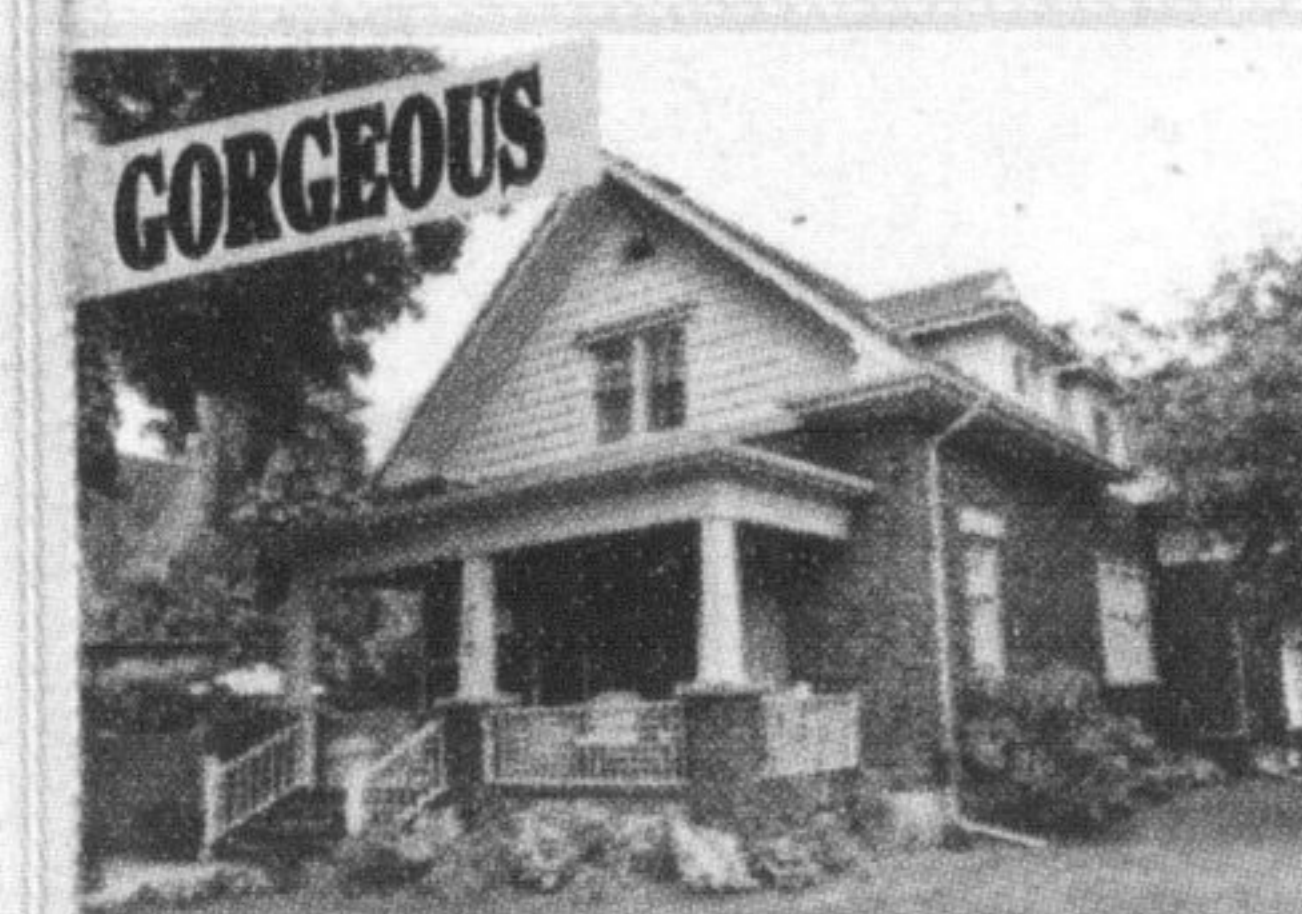
FOR LEASE
Located across from school. Soaring 9' ceilings and gleaming hardwood floors. Gas fireplace with decorative mantle.
\$1,775/Month



HOT OFF THE PRESS
Gorgeous Greenpark home located in desirable Milton Trails. Stunning kitchen boasts imported floors, thick granite counter and much more. Sparkling master ensuite includes soaker tub & glass enclosed shower.
\$649,900



HOT OFF THE PRESS
Gorgeous 1 bedroom + den Hampton model (898 sqft). Dark cabinets, stainless steel appliances & ceramic backsplash in the kitchen. Open concept living/dining room with pot lights.
\$249,900



GORGEIOUS
Gorgeous 4 bedroom home situated on a corner lot close to downtown Milton. Completely renovated from top to bottom. Beautiful yard has mature trees, hedge for privacy.
\$699,900



CUSTOM BUNGALOW
Gorgeous bungalow situated on just over 3/4 acre. Backing onto Chudleigh's. Inground pool and deck. Huge kitchen with stainless steel appliances. You will not be disappointed.
\$734,900

Pat Rideout
SALES REPRESENTATIVE 905-878-8101
email: PatR@RoyalLePage.ca
www.patrideout.ca
Member of the Oakville-Milton, Toronto and Hamilton-Burlington Real Estate Boards



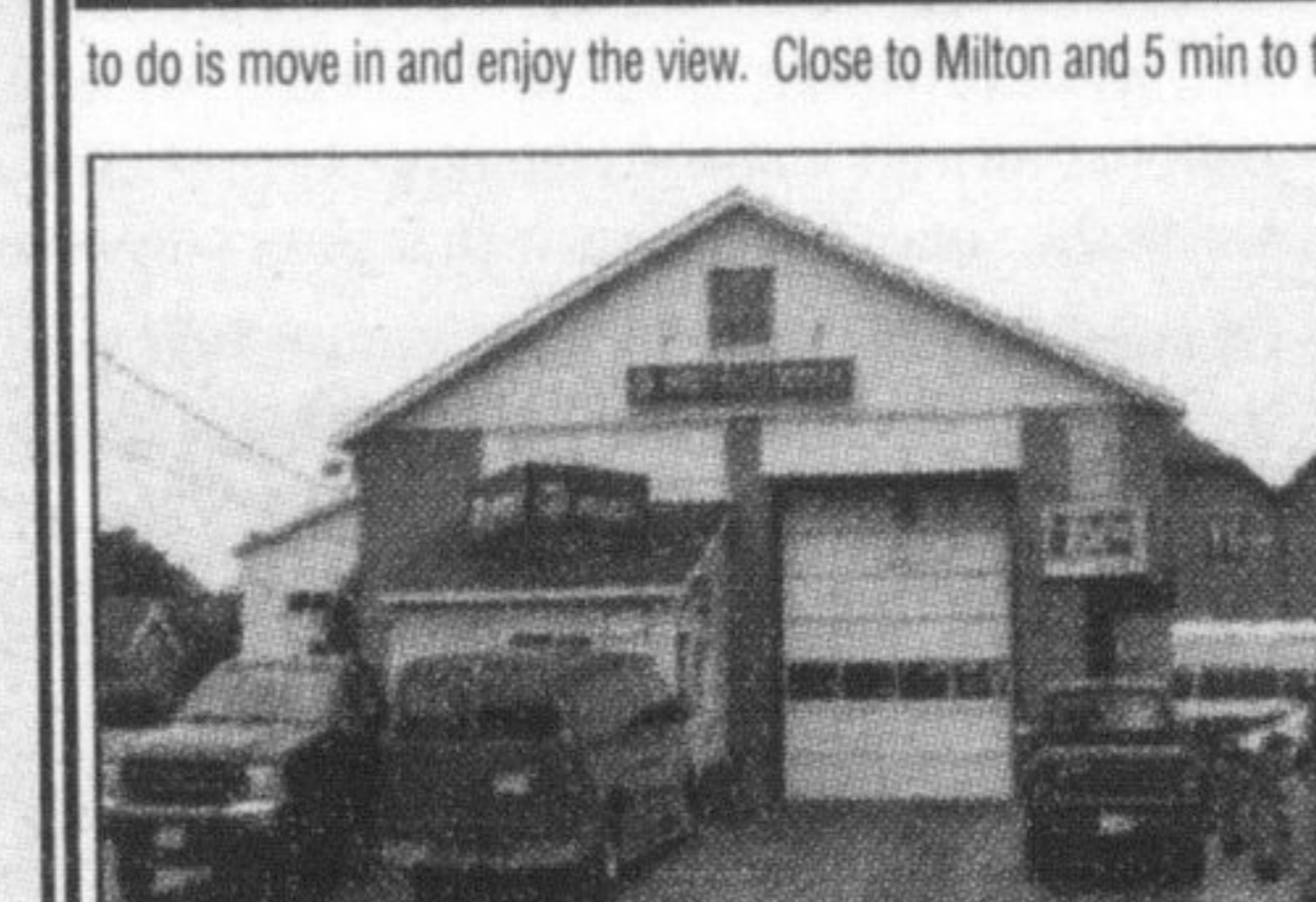
DRURY PARK BUNGALOW
backing onto the walkway. Lots of upgrades including hardwood floors in the LR/DR, gas fireplace, California shutters, built-in appliances, kitchen island, double garage, and a loft with bedroom and full ensuite. Close to shopping and public transportation – a much desired neighbourhood for empty nesters. Call Pat before it's gone. **\$414,900**



LOOK NO FURTHER
This spacious 4br detached home in a great family neighbourhood. Large foyer and circular oak staircase greet you as you come in. At almost 2600 sq.ft, there's lots of room for the growing family. Features incl eat-in kitchen with stainless appl and walk-out to fully fenced rear yard, main floor family room with gas fireplace, separate dining room and 4 generous bedrooms on the upper level. The master has an ensuite with a sep shower and corner tub. Don't wait until there's an offer...this may be the one for you!!! **\$469,900**



AFFORDABLE COUNTRY
Looking for a nice little country bungalow with a view of the escarpment? Look no further. Recently renovated, this country charmer has newer hardwood in the LR with a cozy wood stove, separate dining room, adjoining kitchen and two bedrooms on the main level. Lower level has a recently finished 3rd bedroom or office plus garage access. Most of the high ticket items have already been replaced/updated (e.g. electrical panel, pressure tank and pump, garage, furnace). All that's left to do is move in and enjoy the view. Close to Milton and 5 min to the 401. Call Pat for your personal visit. **\$288,500**



BUSINESS IS RELOCATING COMMERCIAL/RETAIL SPACE
Rare opportunity to purchase commercial/retail space in the downtown core. Great location with high visibility and traffic. Building is 2400 square feet on the main level. Zoning lends itself to a wide variety of uses. Call Pat for further details and to schedule an appointment to view. **Listed at \$699,900**



BUILD YOUR DREAM HOME!
Great size and location to build your dream country home. Just west of Guelph Line in the hamlet of Moffat, this almost 4 acre building lot has a new drilled well in place. Located across from Tuscan Ridge estate subdivision. This property is a newly created building lot – a rare find, so don't miss out on this opportunity. Call Pat for further details. **\$329,900.**



WHAT A VIEW!!
Fabulous 4th floor condo apt with vaulted ceilings and a wonderful view from the solarium style windows in the 2nd bedroom. This is an almost new building with an upgraded kitchen fully equipped with stainless steel appliances and walk-out to the balcony. Large great room comes with corner gas fireplace. Spacious master bedroom has an ensuite. There's a very limited number of this top floor model so act fast. Has to be seen to be appreciated. **\$269,900.**

EXPECT THE *Royal Treatment*

Sandy Del Papa
AN ACCREDITED "HOME STAGING" PROFESSIONAL
DID YOU KNOW? FREE STAGING CONSULTATION WITH ALL LISTINGS

93 ACRES + 2 HOUSES WITH FRONTAGES ON 2 ROADS

\$1,100,000
Great Value. Don't miss out. Make arrangements to view this 93 acre parcel. Ideal horse farm potential. Large principle residence (approx. 3,000 sq. ft.) plus second home suitable for farm hands. Barn & drive-shed on property (need repair), huge detached workshop - great for home hobby/business. Location provides great access to Mohawk. Call Sandy

See photo gallery at www.sandydelpapa.ca

Top 1% Nationally again in 2008

THE BRAZEAU TEAM

WWW.BRAZEAUTEAM.COM

905-878-8101



Joseph Brazeau, B.A.*



Virginia Brazeau, R.N.*



Jodie Near, B.A.*



Kim Coulter, Sales Rep

TRULY INCREDIBLE!!

Open concept split situated on large lot. Upgraded kitchen with walk out to deck overlooking farmer's fields. Oversized double garage with access to main flr laundry. Lrg sunny loft above garage. Roomy above grade in-law suite with walk out to private deck.



\$699,000

5 WOODED ACRES

Beautifully updated Executive home. Updated gourmet kitchen. Main floor family room with 2 walkouts and fireplace. Formal living and dining rooms. Triple car garage.



\$698,000 MILTON

10 BEAUTIFUL WOODED ACRES

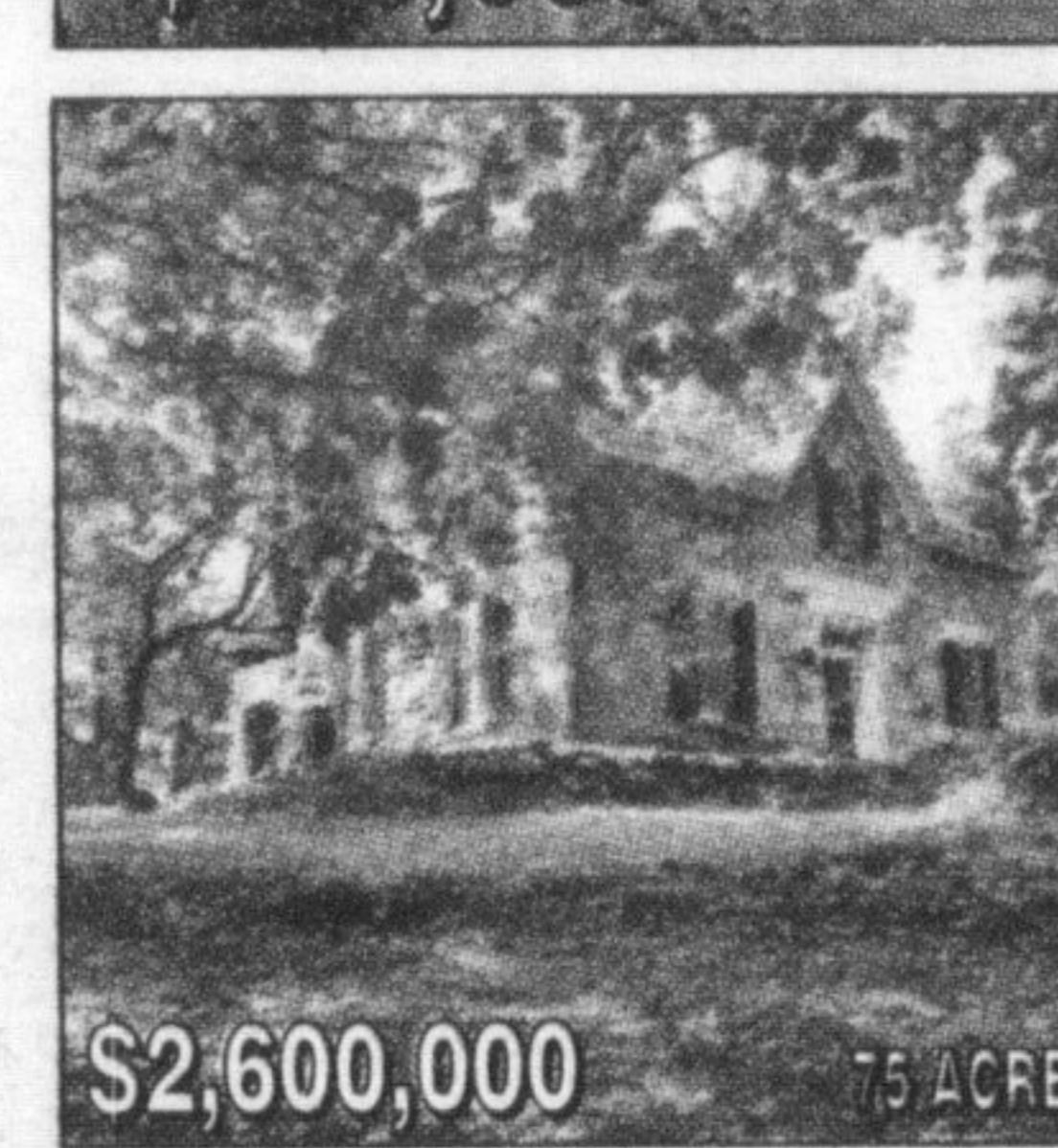
Offers a country lifestyle but within minutes of Milton and 401. This unique custom built 4200 sq ft "Post & Beam" by "Thistlewood" in 1991. Open concept Kitchen & family room. 4 bdrms and 4 baths. Vaulted ceilings. Great home for entertaining. Master bdrm, den/library with vaulted ceilings. Geothermal forced air heating/cooling. "Masonry Heater" in LR. Beautiful grounds with hot tub and pool.



\$898,000

CENTURY HOME

Stone 5-bdrm w/all the charm of yesteryear! Wood floors, high ceilings, lrg principal rms, 3 firepl. Bank barn, d/shed, dbl det garage, tennis court. Creek, woods, meadows. Incomparable!



\$2,600,000 7.5 ACRES

10+ ACRE GATED COUNTRY ESTATE

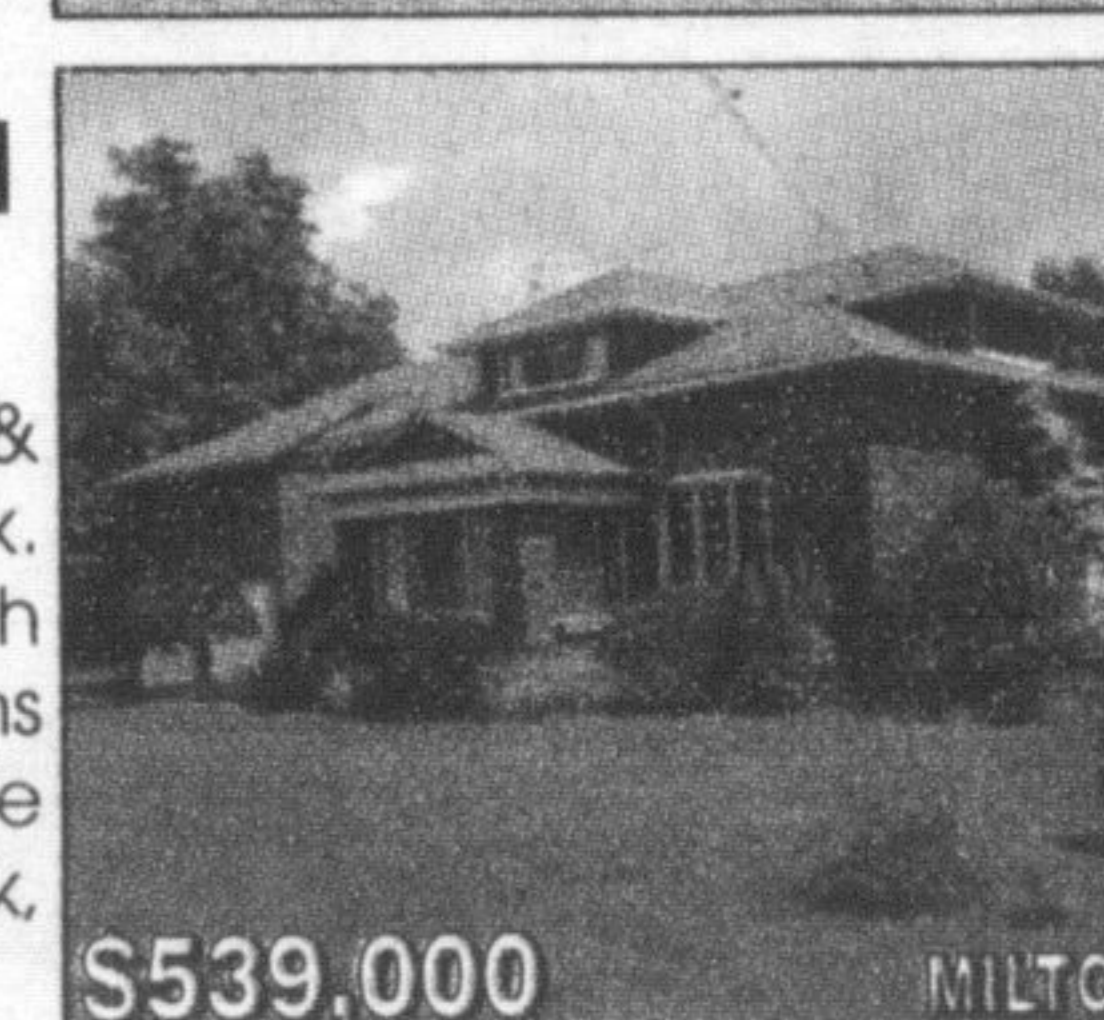
Sprawling ranch bungalow with w/o basement. Indoor, salt water pool/spa with attached party room. 7 bedrooms. Gourmet kit w/state of the art appliances. 2 ponds, 1 stock with trout. Numerous outbldgs including Heated workshop, heated 18.5' x 48 garage (ideal for motorhome). Sophisticated security system. Call for more details.



\$849,000 MILTON

.88 ACRE IN MILTON HEIGHTS

Nestled between Kelso & Country Heritage Park. Updated Country home with town water. 2 storey, 4 bdrms with main flr family room. Large "Country" kit with w/o to deck, pool & cabana.



\$539,000 MILTON

For further information and photos on these properties please visit BrazeauTeam.com

* SALES REPRESENTATIVE ** BROKER