

Open house on planned major employment area

By Tim Foran
CANADIAN CHAMPION STAFF

The Town will host an open house Tuesday on a draft secondary plan for Milton's next major employment area, one with a heavy focus on white-collar jobs.

Milton council Monday night approved the release of the plan for the area east of James Snow Parkway — the Derry Green Corporate Business Park (Business Park II).

It's the second of two major employment areas outlined in the Town's 1997 Official Plan, the first the 401 Industrial/Business Park. That employment zone, mostly north of Hwy. 401, is about 80 per cent complete and is notable for its large warehousing and logistics operations.

The secondary plan for Derry Green, however, envisions a denser office-based format, with industrial lands only destined for about 28 per cent of the developable area and the other 72 per cent set for business parks. It's expect to employ about 17,000 to 18,000.

Points on major streets such as James Snow would host "prestige office areas" with an urbanized look — minimum three-storey buildings right on the street with any surface parking at the side or rear of the buildings.

The 1,820-acre employment area is located between James Snow and Sixth Line. About 65 per cent of the area is slated for actual development, with greenlands and

open space taking up about 17 per cent. The CP railway, hydro, gas and utility corridors account for another 13 per cent. The remaining land is set for roads, including the eastward extensions of:

- Main Street to Trafalgar Road
- Louis St. Laurent Boulevard to Sixth Line
- Clark Boulevard, Waldie Avenue and Trudeau Drive

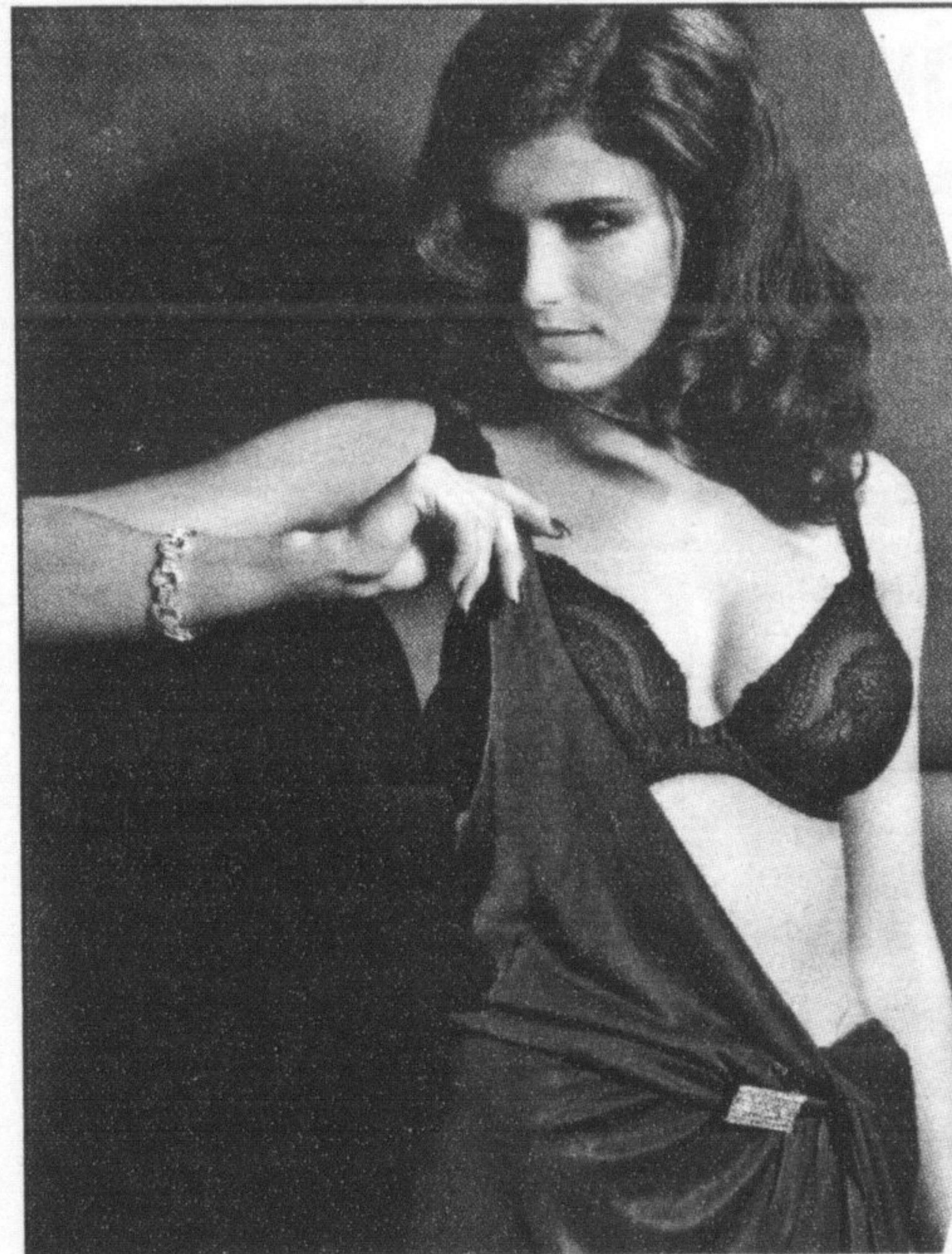
While the Town's consultant believes some activity could start in the area next year, Halton Region still has to provide water and sewer servicing to the area.

One of the conditions for development to begin is a financial plan satisfactory to the Town and Region. For the Town, that requires a financial agreement among landowners in the area to address the distribution of development costs. The plan states that agreement would include costs the Town can't recover under the Development Charges Act, such as for the provision of parks and roads.

Tuesday's open house will be held at Hugh Foster Hall (beside Town Hall) from 6:30 to 9 p.m., with a presentation at 7 p.m.

Council's planning and public works committee will have a public meeting on the plan November 9, with the plan slated to go to council for adoption in December.

Tim Foran can be reached at tforan@mil-tontanadianchampion.com.



Experience the best
in Bra Fitting
NOW OPEN

Imported Bras
Merry Widows
Bustiers
English Corsets
Seamless Shapewear
Sport
Mastectomy
Nursing
Fine Sleepwear

Full service fittings,
no appointment needed.
Enter to win a free Bra

Sizes A-M 28 -56

Shapings
Making women feel comfortable
since 1995

570 Plains Road East
Burlington 905-637-4273

15 Martin St., Carriage Square Plaza
Milton 905-636-9992

Mon-Wed 10-6, Thur-Fri 10-8, Sat 10-5
www.shapings.com

Areas largest selection
of bras to suit every
woman's shape, size
and style

MILTON TOYOTA

MORE FOR YOU

MADE IN CANADA

I know Toyota knows that I want to lease.

lease with ease Because I know Toyota has great lease rates on all 2010 models. I can lease with ease.

<p>NEW 2010 Matrix</p> <p>LEASE FOR \$159[†] @ 2.9%^{APR} <small>per month for 48 months with \$2,715 down.</small></p> <p><small>MSRP** STARTING FROM \$16,440</small></p> <p><small>0%^{APR} PURCHASE FINANCING FOR 36 MONTHS</small></p> <p><small>HWY 6.2L/100 KM (46 MPG)† CITY 7.8L/100 KM (36 MPG)†</small></p>	<p>NEW 2010 Corolla CE</p> <p>LEASE FOR \$159[†] @ 2.9%^{APR} <small>per month for 48 months with \$1,975 down.</small></p> <p><small>MSRP** STARTING FROM \$15,260</small></p> <p><small>0%^{APR} PURCHASE FINANCING FOR 36 MONTHS</small></p> <p><small>HWY 5.6L/100 KM (50 MPG)† CITY 7.5L/100 KM (38 MPG)†</small></p>	<p>NEW 2010 RAV4</p> <p>LEASE FOR \$259[†] @ 4.9%^{APR} <small>per month for 48 months with \$3,912 down.</small></p> <p><small>MSRP** STARTING FROM \$24,345</small></p> <p><small>2.9%^{APR} PURCHASE FINANCING FOR 36 MONTHS</small></p> <p><small>HWY 6.9L/100 KM (41 MPG)† CITY 9.4L/100 KM (30 MPG)†</small></p>
<p>NEW 2010 Camry LE</p> <p>LEASE FOR \$249[†] @ 3.9%^{APR} <small>per month for 48 months with \$3,993 down.</small></p> <p><small>MSRP** STARTING FROM \$24,900</small></p> <p><small>1.9%^{APR} PURCHASE FINANCING FOR 36 MONTHS</small></p> <p><small>HWY 6.1L/100 KM (46 MPG)† CITY 9.0L/100 KM (31 MPG)†</small></p>	<p>No security deposit on 2010 leases.</p> <p><small>* Limited time finance offers available from Toyota Financial Services on approved credit. License, registration, PPSA, insurance, applicable fees and taxes are extra. MSRP of a new 2010 Corolla (Model BU4EEMA), 2010 Matrix (Model KU4EEMA), 2010 RAV4 (Model ZF4DVP4) and 2010 Camry (Model BF36KTA) is \$15,260/\$16,440/\$24,345/\$24,900 plus freight and PDE of \$1,320/\$1,320/\$1,490/\$1,420. Tax for fuel conservation is \$75/\$75 for Matrix/Camry. 0% APR/2.9%/1.9% finance APR equals \$424/\$457/\$707/\$713 per month for 36/36/36/36 months. Cost of borrowing is \$0/\$0/\$1,107/\$768 for a total obligation of \$15,260/\$16,440/\$25,452/\$25,668. 113.9%/3.9%/3.9% lease APR for 48/48/48 months on a new 2010 Corolla (Model BU4EEMA), 2010 Matrix (Model KU4EEMA) and 2010 Camry (Model BF36KTA). When you apply the \$500 customer incentive monthly payment is \$159/\$159/\$249 with a \$1,975/\$2,715/\$3,993 down payment or trade equivalent, and first monthly payment due at lease inception. Total lease obligation is \$9,627/\$10,362/\$15,949 plus freight and PDE of \$1,320/\$1,320/\$1,420. Based on a maximum of 96,000/96,000/96,000 KMS. Additional KM charge of \$.07/\$.07/\$.10 for excess kilometres if applicable. *5.4% lease APR for 48 months on a new 2010 RAV4 (Model ZF4DVP4). Monthly payment is \$259 with a \$3,912 down payment or trade equivalent, and first monthly payment due at lease inception. Total lease obligation is \$16,345 plus freight and PDE of \$1,490. Based on a maximum of 96,000 KMS. Additional KM charge of \$.10 for excess kilometres if applicable. †These estimates are based on the Government of Canada's approved criteria and testing methods. The actual fuel consumption of these vehicles may vary. Refer to the Government of Canada publication EnerGuide Fuel Consumption Guide. All rights are reserved. Dealer may sell/lease for less. Quantities of certain vehicles are limited and dealer trade may be required. Dealer trade availability may also be limited and will vary by model. Offers valid between September 1, 2009 and September 30, 2009 and are subject to change without notice. Please see your participating Toyota Dealer for full details.</small></p>	

MILTON TOYOTA

mytoyotaplace.com

Toll Free: 1-800-617-4025

1245 Steeles Avenue
(Corner of James Snow Pkwy. & Steeles Ave.)