

**ROYAL LEPAGE**  
Meadowtowne Realty, Brokerage  
Independently Owned and Operated



# ROYAL LEPAGE ME

905-878-8101 475 MAIN ST.



**Carole D. Budworth\***  
905-878-8101



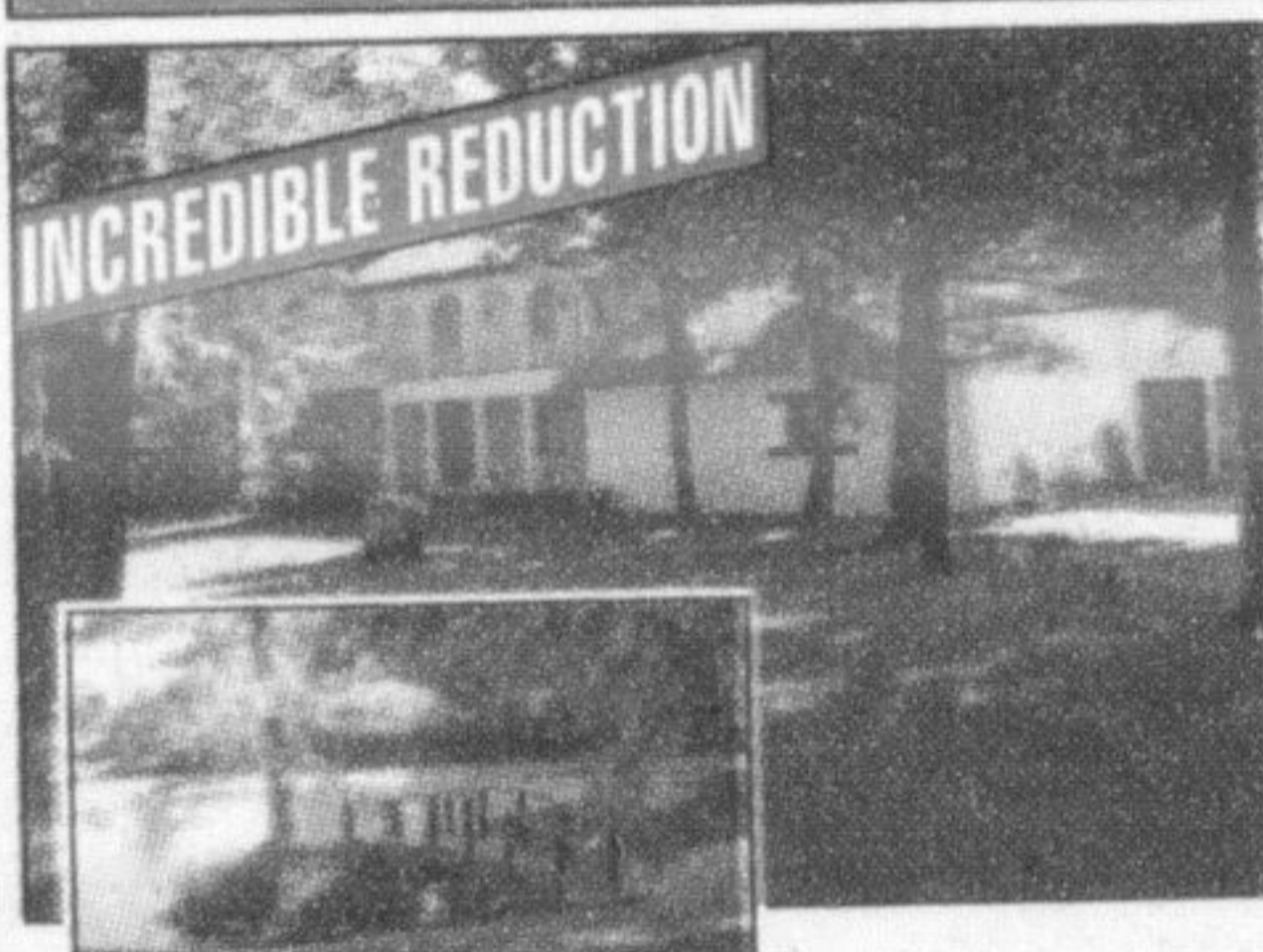
*Honest. Professional. Trustworthy. Hard Working.*

**HOT OFF THE PRESS**



Great townhouse close to schools, parks, shopping and Go train. Fenced yard with walk-out from main floor family room with gas fireplace. Large living room, separate dining room, eat-in kitchen, 3 bedrooms, 2 baths. Garage with inside entry to house, use of inground pool. Includes all appliances. **Priced to sell at \$204,900. Call Carole today.**

**FABULOUS TEN ACRES**



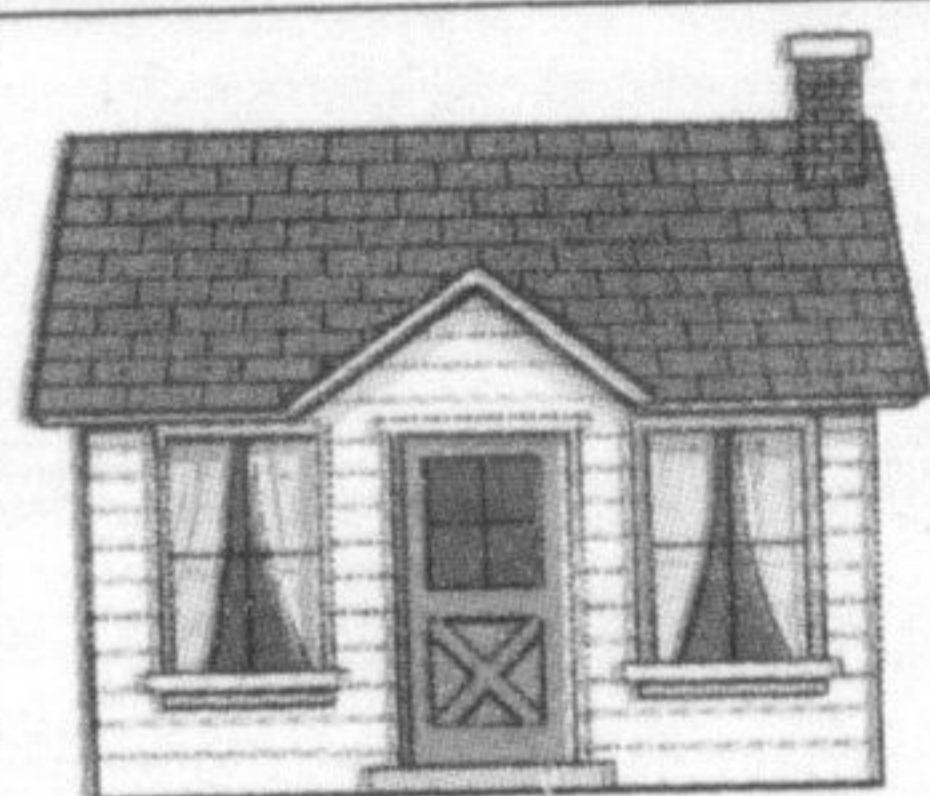
In the country located within excellent commuting distance of all major centres. Great escarpment views and offers gorgeous indoor pool, huge stocked pond, tennis court, entertainer's delight in an outbuilding with bath, bar, pool table. Walk out from building to your own private parkland. Finished lower level with games room, family room, bath, bar, sauna and entry to indoor pool and sitting area. **\$898,000. Call Carole for further details.**

**JUST LISTED FOR LEASE**



Townhouse in Dorset Park within walking distance to all amenities. First and last month's rent required. No pets or smokers. Available November 1st and priced at \$1400.00 per month. Includes garage with inside entry to house, use of inground pool, fenced yard with walkout from main floor family room, 3 bedrooms, 2 baths, sep. dining room, eat in kitchen, large living room. Call Carole today.

**COMING SOON**



**TOO NEW FOR PHOTO**

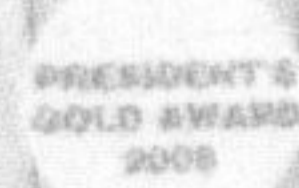
Darling century home within walking distance to downtown, the farmers market, restaurants, Go train and all other amenities. Substantially renovated 1 1/2 story home just calling out to all couples or singles. Offers living rm, dining rm, family rm, eat in kitchen, two bedrooms, two full baths, detached garage, 3 walkouts from the kitchen to deck, and well landscaped private yard, walk out from dining room as well to deck. This home is a must see and priced to sell for \$399,900. Call Carole for further details on this gem or for your private tour.

**I CAN PUT A SOLD SIGN ON YOUR LAWN!**

*Give Me A Call For A Complimentary Home Evaluation!*



**Kim Scott\***  
Sales Representative



878-8101

kimscott@royallepage.ca



Modified Lindsay model with extra large master and ensuite with soaker tub and walk in shower. Upstairs laundry, computer nook, & 2 other good sized bedrooms. Hardwood and ceramics on main level and new carpet Fall '08 upstairs. Eat in kitchen with upgraded cupboards with valance lighting, stainless appliances & walk out to lg stone patio. This well dressed home is tastefully done and spotlessly clean. **\$379,900**



**Hunter OBEE**  
Sales Representative  
905-878-8101

Melanie BLAY  
Sales Representative



TOP 3% NATIONALLY

905.875.9553

905.299.6357



Mattamy's popular Powell model with a fully finished basement set on an oversized lot backing onto mature trees.

Price listed at **\$389,900.**



Fabulous detached home situated on a quiet cul-de-sac steps to schools and parks. Larger than it looks from the outside and features a fully finished basement.

Listed at **\$429,900.**



Spotless 4 BR Mattamy set on a very quiet street in mature Hawthorne Village. Features hardwood stairs, fireplace, main floor laundry plus a partially finished basement.

Offered at **\$437,900.**



Fantastic opportunity in Olde Milton. This grand home is set on a huge lot steps to downtown. Loads of potential, just bring your imagination.

Price listed at **\$449,900.**



Nicely Updated Executive set on a very private lot in desirable Timberlea. Features a finished basement and in ground pool.

Well priced at **\$469,900.**



An immaculate 'Abbey' by Charleston homes set on a huge lot and backing onto a mature forest. This showpiece offers over 2800sf of living space and is packed with upgrades.

Price listed at **\$494,900.**



Gorgeous 3200sf all-brick home backing onto a protected forest. Highly upgraded with 9' ceilings, hardwood floors and stairs, main floor office and laundry, plus 3 full ensuite baths. Call today for your personal tour.

Price listed at **\$555,000.**

Visit [www.thehomehunter.ca](http://www.thehomehunter.ca)

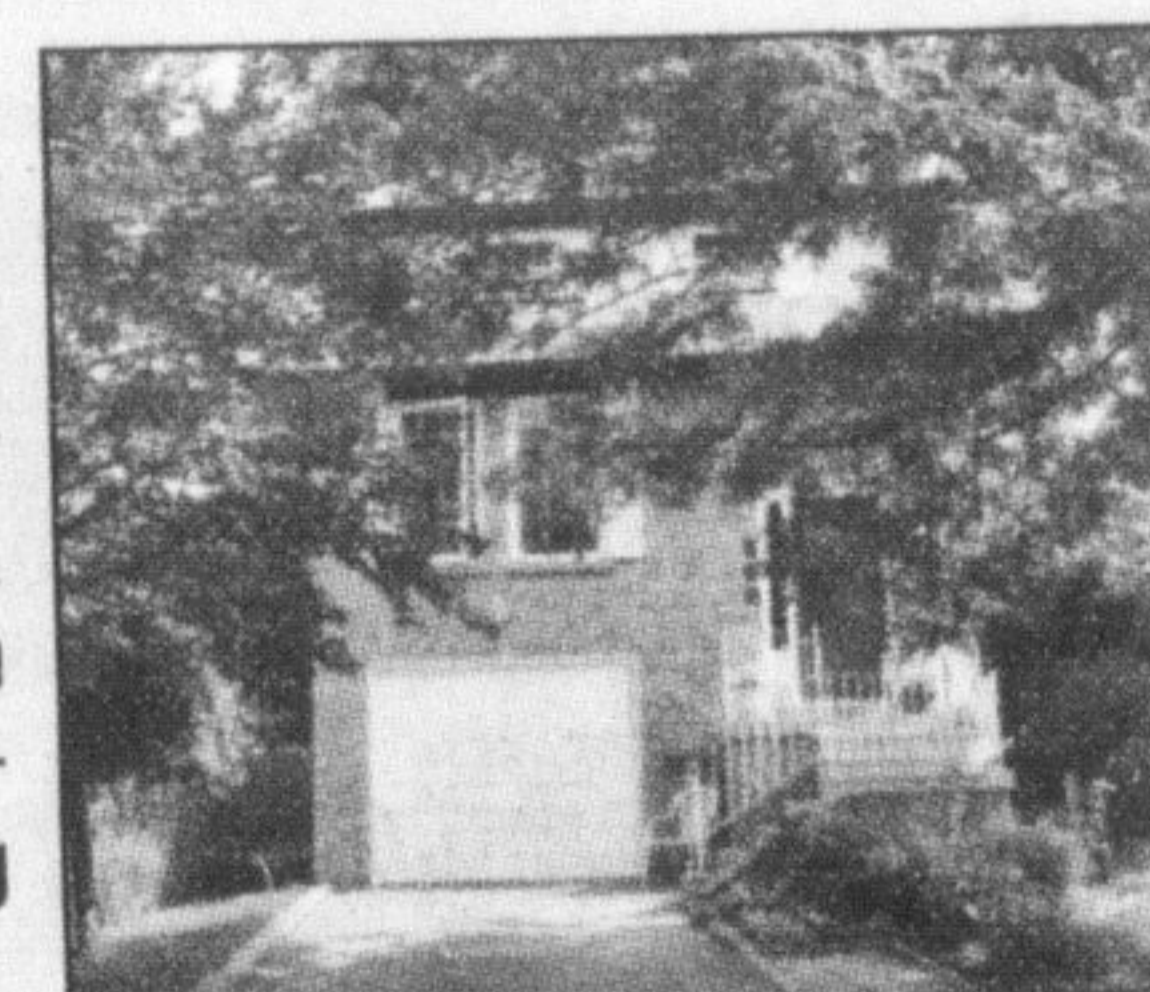


**Eva Gooding\***  
Sales Representative  
Office 905-878-8101  
Direct 905-691-2401



**QUIET COURT**

Spacious updated 3 bedroom home located on a quiet court. Large principal rooms, family room with gas fireplace & walkout to backyard. Eat in kitchen, french doors & hardwood flooring. **Asking \$314,900. Call Eva Gooding.**



**ON THE ESCARPMENT**

An impressive entrance provides great curb appeal into this all brick home. Premium yard with exit from garage into backyard, plus parking for three cars. Extended front porch overlooking green-space. A beautiful gourmet size kitchen with centre island, rich mocha stained cabinetry, 5 appliances included, rich hardwood throughout main and staircase. Master ensuite with soaker tub and separate shower. **MIs #2004902 Listed at \$359,900. Call Eva Gooding.**



**NEVER LIVED IN**

Built by Milton Trails Fieldgate Homes, attractive curb appeal with view of the escarpment, all brick two storey with covered front porch, no sidewalk side, "Carlisle model with espresso kitchen cabinets with six appliances included, four generous size bedrooms, main floor great room, central air and 9' ceilings, fresh new look and move in as early as you wish! **Listed at \$369,000 Call Eva Gooding.**



Helping you **MOVE** in a New Direction!  
905-878-8101

**Diane Maynard**  
Sales Rep.  
dianemaynard@royallepage.ca



**Susan Recoskie**  
Sales Rep.  
susanrecoskie@royallepage.ca

**LISTED AT \$595,000**



**Oversized Garage/Workshop**

for your home based business. Where the old meets the new, built in the early 1900's originally as the church manse. The charm and character has been preserved in this 4 bedroom, 2 storey brick beauty. New kitchen, granite counters, stainless steel appliances, hardwood floors, 2 fireplaces, main floor laundry, in ground pool and awesome 28'x30' garage with loft. Call Susan or Diane for your personal tour today!

