

CHEVROLET SILVERADO

MORE TRUCK

FOR YOUR BUCK

2009 CLEARANCE



★★★★★
FIVE STAR
SAFETY RATING[◇]

2009 CHEVY SILVERADO 4x4 CREW CAB

Standard Equipment Includes: • 4.8L 295 hp Engine • Automatic Transmission with Overdrive and Tow/Haul Mode • Air Conditioning • Cruise Control • StabiliTrak™ Electronic Stability Control System • 17" Wheels • Locking Rear Differential • Trailing Special Equipment Package

E/F HWY: 11.1L/100km • 25mpg
CITY: 15.4L/100km • 18mpg[◇]

\$27,995*

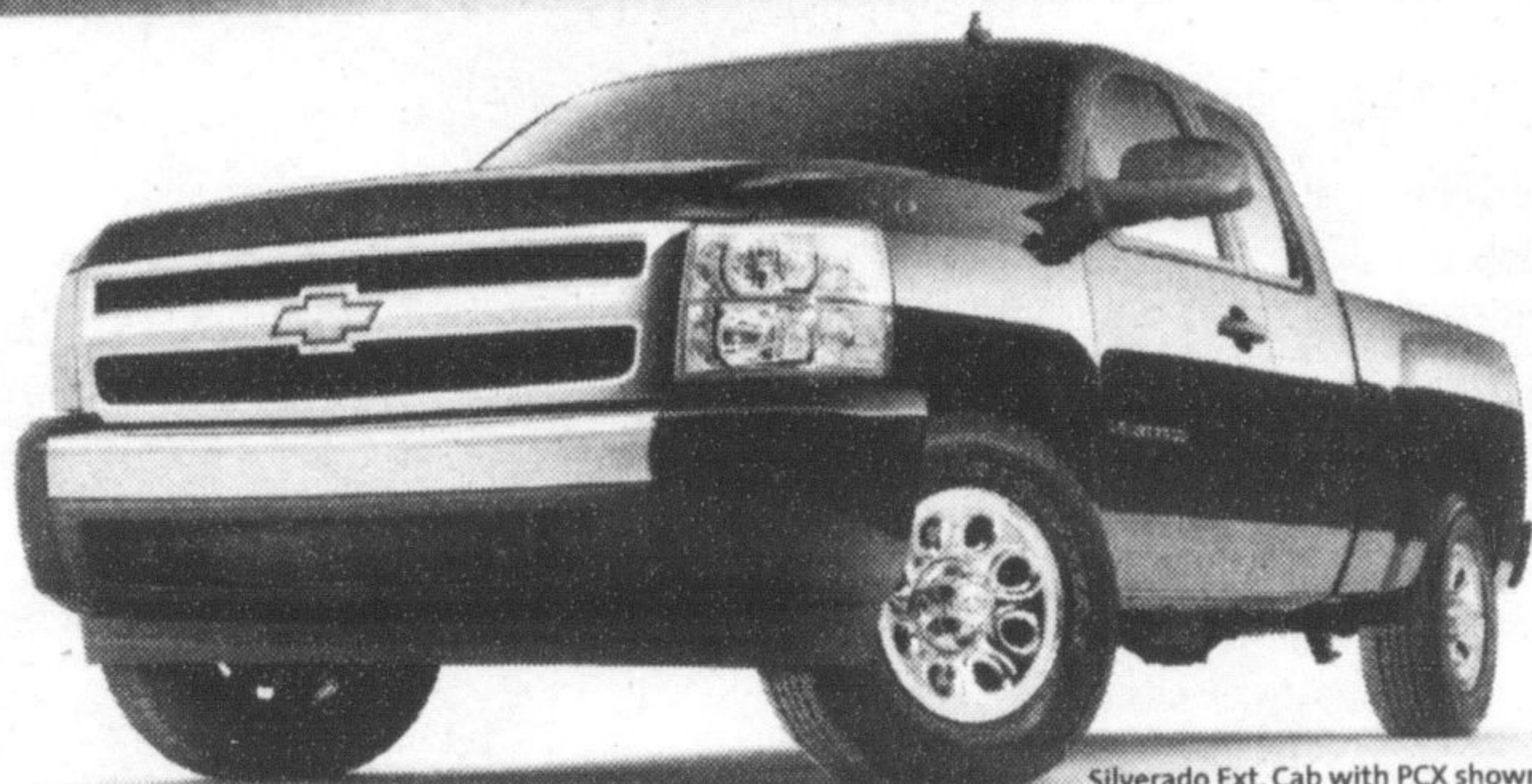
CASH PURCHASE PRICE
current gm owners save
an additional \$1,000[▽]

INCLUDES
\$8500 CASH CREDIT

• MOST DEPENDABLE, LONGEST LASTING PICKUP ON THE ROAD** • MOST FUEL EFFICIENT 4X4 FULL SIZE PICKUP[△] • BEST IN CLASS AVAILABLE HORSEPOWER AND TORQUE[†]

NOW GET NO CHARGE 6" CHROME SIDE STEPS[∞]

MSRP VALUE OVER \$700



Silverado Ext. Cab with PCX shown^{††}

2009 CHEVY SILVERADO 4x4 EXT. CAB

\$26,495*

CASH PURCHASE PRICE
current gm owners save an
additional \$1,000[▽]

INCLUDES
\$8500 CASH CREDIT

E/F HWY: 11.1L/100km • 25mpg
CITY: 15.4L/100km • 18mpg[◇]

Standard Equipment Includes:

- 4.8L 295 hp V8 Engine • Automatic Transmission with Overdrive and Tow/Haul Mode • Air Conditioning • StabiliTrak™ Electronic Stability Control System • Locking Differential
- Power Windows & Locks • Remote Keyless Entry System
- Trailing Special Equipment Package

visit: ontariochevroletdealers.com

GM THE BEST COVERAGE IN CANADA
5 YEARS • POWERTRAIN COMPONENT LIMITED WARRANTY
160,000KM • ROADSIDE ASSISTANCE
• COURTESY TRANSPORTATION
*WHICHEVER COMES FIRST. EXCLUDES MEDIUM DUTY TRUCKS. SEE DEALER FOR LIMITED WARRANTY DETAILS.

GREEN BY DESIGN[∞]
GM HAS MORE VEHICLES WITH 7L/100KM (40 MPG) OR BETTER HIGHWAY FUEL CONSUMPTION THAN ANY OTHER AUTOMAKER.
greenbydesign.gm.ca

STUDENT BONUS GM pays the first monthly payments[▽]



For the latest information, visit us at chevrolet.com, drop by your local Chevrolet Dealer or call us at 1-800-GM-DRIVE. *\$1,000 is a manufacturer to consumer incentive (tax inclusive) and is reflected in offers in this advertisement. Example: \$10,000 purchase price, after tax price is \$11,200 (\$10,000 plus \$1,200 applicable taxes). After applying \$1,000 credit, after tax price is \$10,200. Offer applies to current owners/lessees of any GM vehicle, excluding 2008MY and prior vehicles and Medium Duty Truck. Vehicle must have been registered and insured in customer's name for previous consecutive 6 months. Conditions and limitations apply. See dealer for details. Offer applies to the cash purchase of 2009 Chevrolet Silverado Crew Cab 4WD TSP/Silverado Ext. Cab 4WD TSP new or demonstrator model. Cash purchase price reflects discounts or other incentives that are only available when consumers opt for a cash purchase offer. By selecting lease or finance offers consumers are foregoing such discounts and incentives which will result in a higher effective interest rate. Freight (\$1,350/\$1,350), license, registration, PPSA, administration fees and taxes are not included. **Offer applies to qualified retail customers in the Ontario Chevrolet Dealer Marketing Association area only (including Outaouais). Dealer trade may be required. Dealers are free to set individual prices. Limited time offer which may not be combined with other offers. ††MSRP value of vehicle equipped as described. Your actual fuel consumption may vary. †††US government star ratings are part of the National Highway Traffic Safety Administration's (NHTSA's) New Car Assessment Program. For more information on safety ratings, go to www.safercar.gov. 2009 Chevrolet Silverado received both a 5-star Rating for the driver and front passenger in the Frontal Crash Test and for Front and Rear Seat Occupants in the Side-Impact Crash Test. ††††Chevrolet Silverado Ext. Cab with PCX, MSRP \$28,950. †††††OnStar services require vehicle electrical system (including battery), wireless service and GPS satellite signals to be available and operating for features to function properly. Subscription payment agreements with GMAC and subject to GMAC credit approval. Visit onstar.com for more details. †††††Dependability based on longevity, as sourced from R. L. Polk Canada, Inc., Canadian Vehicle in Operation registrations as of July 1, 2008 (Model Years 1988 to 2007) and Total New Vehicle Registrations for the full-size light-duty pickup truck segment, including chassis cabs. Based on % of vehicles remaining in operation, weighted on age of vehicle. †††††Offer applies only to 2009MY 1500, 2500, 3500 series Chevrolet Silverado Crew and Extended CK Pickup trucks (excludes Hybrids) delivered after August 6, 2009. Customer will receive, at no additional charge, one pair of 6" chrome oval assist steps (LPO-WH) with an MSRP value of over \$700. Installation by Dealer included. This offer cannot be combined with the \$1,000 2009 CK Pickup Factory Order Incentive. Dealer trade may be necessary. Offer applies only to qualified retail customers in Canada. Offer available at participating dealers only. Dealers are free to set individual prices. †††††Class is full-size pickup truck under 3855kg (8500lbs).