

**Home**  
hardware  
building centre

385 STEELES AVE.  
EAST, MILTON  
TEL: (905) 878-9222  
www.miltonhh.com

# The Canadian Champion

Milton's Community Newspaper Since 1860

CNA Named Canada's Top Community Newspaper

www.miltoncanadianchampion.com

**APPLE**  
AutoGlass

Auto Accessories  
Upholstery Repairs  
Windshield Repairs

781 MAIN ST. #1 & 2,  
MILTON 876-4785

S P O R T S

## Milton teen a big hit at eliminations



N E W S

## Non-profit groups can cash in



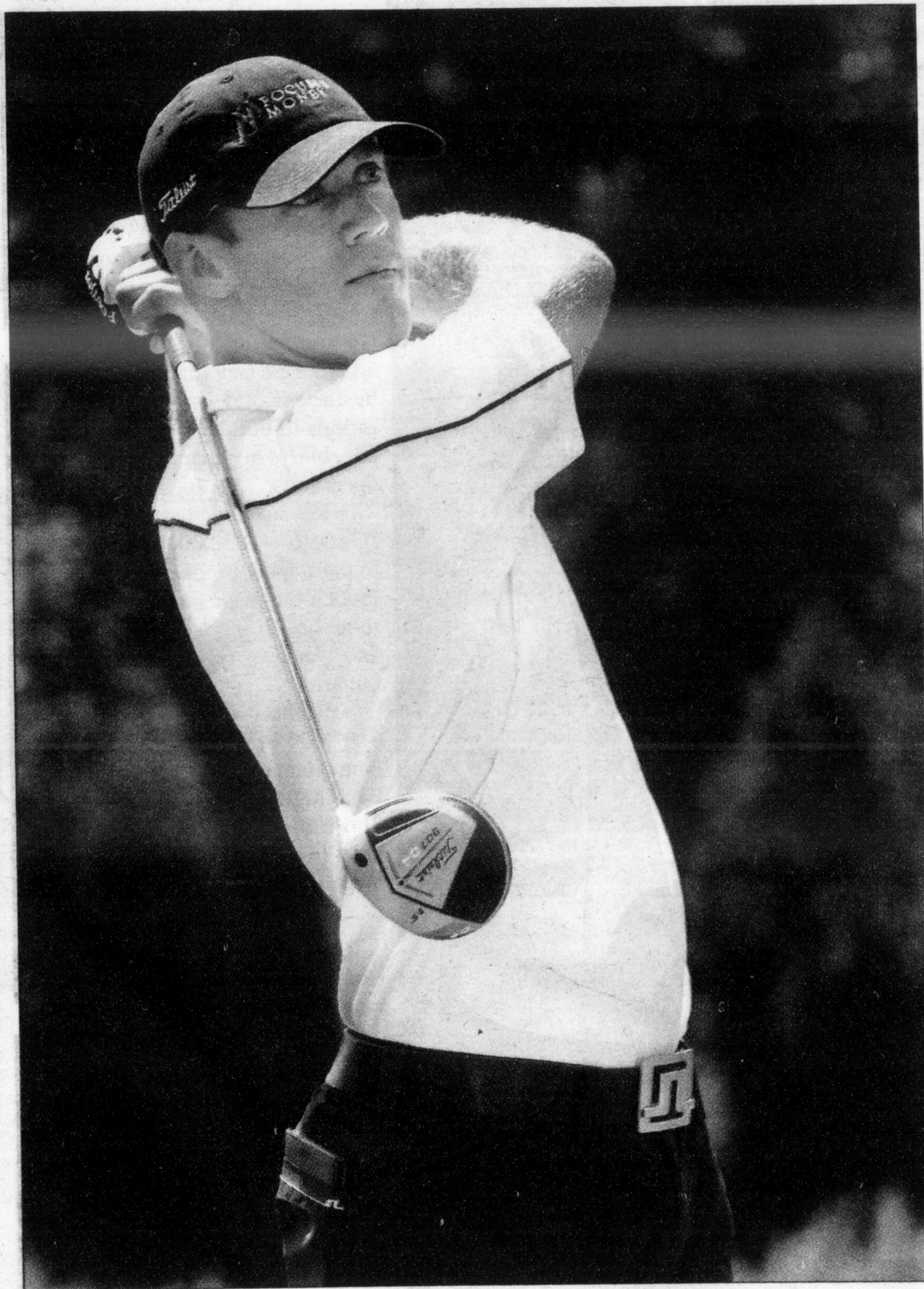
A & E

## Letting artistic side shine

A Metroland Media Group publication • Vol. 150 No. 43

Friday, August 7, 2009

44 Pages • \$1.00 (incl. G.S.T.)



GRAHAM PAINE / CANADIAN CHAMPION

**FORE!** Graham DeLaet — one of Canada's top golfers, who played in last month's Canadian Open — drives off on the 10th tee during Wednesday's Pro-Am in prelude to this week's Roxul Jane Rogers Championship at Greystone Golf Club. See more photos on page A24.

# Milton is going hog (weed) wild

*Dangerous plant found in many areas of town*

By **Stephanie Hounsell**  
CANADIAN CHAMPION STAFF

It's deceptively beautiful.

With its huge, lacey, umbrella-like white blossoms and leaves that can span a metre, giant hogweed is a feast for the eyes. But touch it and you could be in for a nasty surprise in the form of painful skin burns.

Around Milton, giant hogweed hasn't been a stranger, with sightings along the Sixteen Mile Creek. But this year it seems to be growing faster than ever before, and alert residents, Conservation Halton (CH) employees and Town staff are hoping the message of its danger will spread faster than the weed itself.

Milton resident Irene Saunders said she checked out a patch of the impressive-looking plant on the north side of Britannia Road after her daughter told her about it, not knowing what it was.

Saunders knew immediately it was giant hogweed and that she shouldn't touch it.

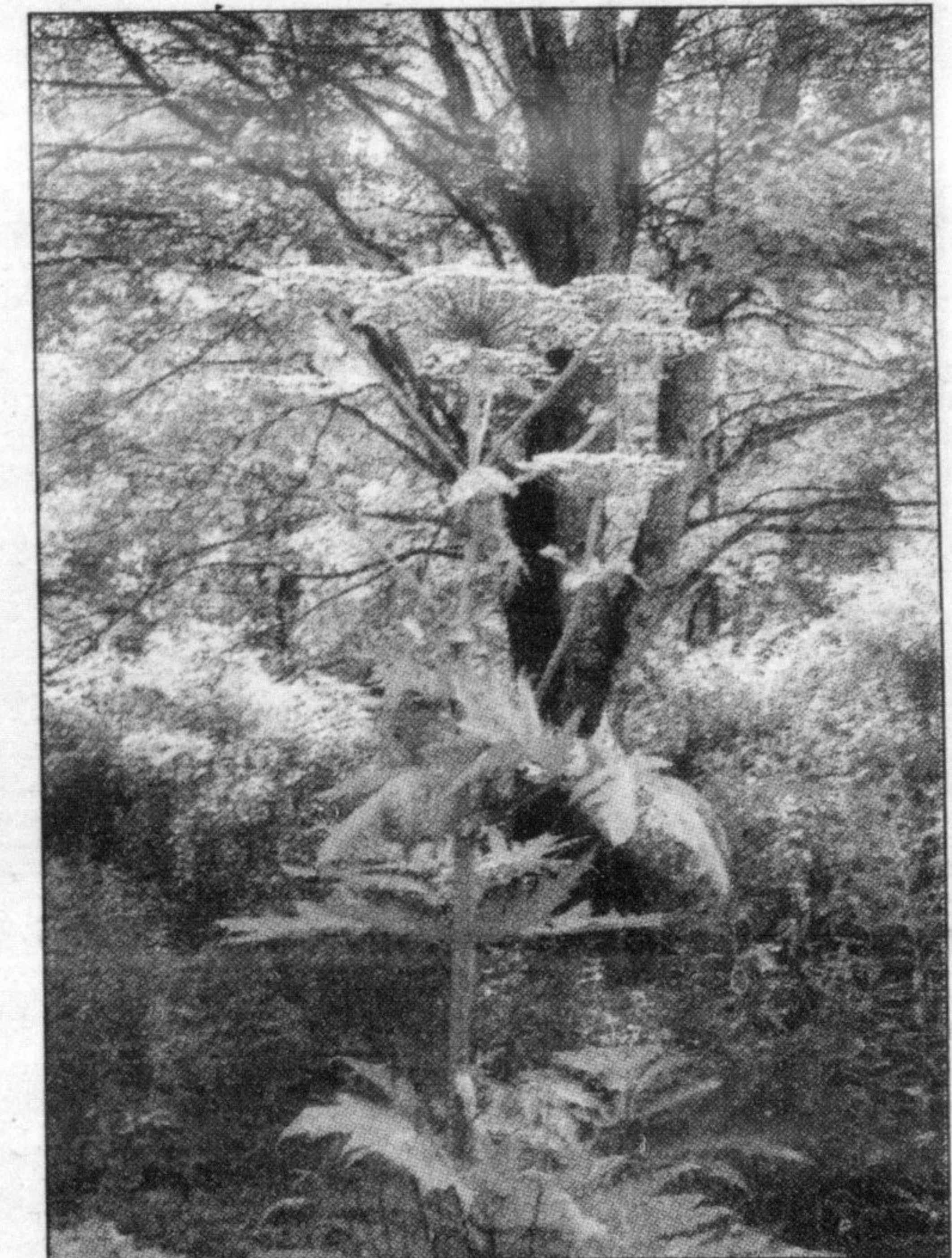
But others might not.

"They're absolutely beautiful and absolutely noxious," she said.

She isn't the only resident who contacted the *Champion* after spotting the plant, each person wanting to help get the word out.

"Every year it's about triple the year before," said Daniel Goodland.

Added outdoorsman Jeff McColl, "My



Giant hogweed, which can burn your skin, seems to be spreading around town.

concern is a kid walking down and getting hold of it."

CH spokesperson Hassaan Basit confirmed giant hogweed is enormous and quite spectacular, often attracting curious admirers. It can grow several metres high and has a thick green stalk. It resembles Queen Anne's lace but is much larger, with massive white flowers that can be larger than a foot in diameter. They flower from mid-May to July, Basit explained.

The plant's compound, incised leaves can be more than a metre wide and the stem and underside of the leaves are covered with course hairs.

• see PLANT'S on page A4

**MILTOWNE**

FREE ESTIMATES

- State-Of-The-Art Facility
- Lifetime Paint Warranty
- Video Estimating System
- Pre-Approved By Major Insurance Companies
- Dependable Uni-Body & Frame Specialists
- I-Car Trained
- Devilbiss Downdraft Spray Booth
- Computer Paint Matching



751 Main St. E., Milton (Across from GO Station)

905-878-6919

Wow! Summer Clearance!

In Stock Summer Clothing

**Joleens** 50% off!

Glitz • Casual • Classic

224 Main St. E • 905-878-9446

NEW Location!