

**PETRO CANADA
GAS CARD INCLUDED**

GREAT DECISIONS AT MILTON'S NORTH END NISSAN

2009 NISSAN Rogue SL AWD

2.5L 4 Cyl. CVT Transmission, Heated Seats, 17" Alloy Wheels, Tilt Steering, Air Conditioning, Power Windows, Power Locks, Power Heated Mirrors, Keyless Entry, Cruise and much, much more!



~~\$28,995~~ **

\$5,000* off

2009 NISSAN Versa 1.8s

1.8L 4 cyl. 122 HP Engine, Automatic Transmission, Air Conditioning, Power Windows, Power Locks, Power Heated Mirrors, Remote Entry, Side Air Bags, Side Curtain Air Bags.

**Includes
Air Conditioning**



\$229* /MONTH
60 MTHS LEASE
Freight Included

\$0 Down

2009 NISSAN Versa Sedan

1.6L, 4 cyl, side airbags, side curtain airbags, air conditioning, AM/FM/CD Stereo, p.windows/locks/mirrors, remote entry, etc.

**Air Conditioning
& Much More**

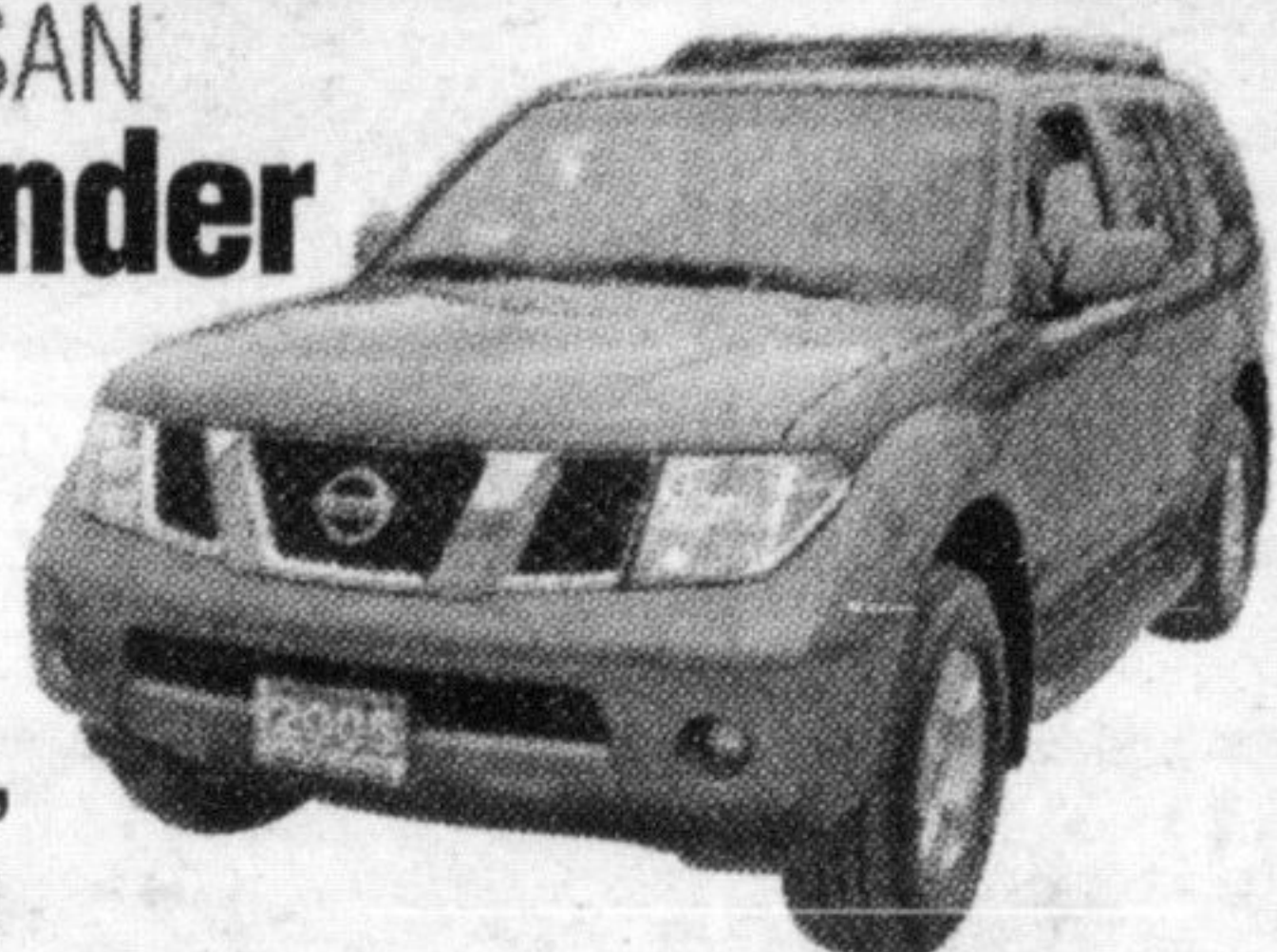


\$12,479**

PRE-OWNED VEHICLES • PRE-OWNED VEHICLES • PRE-OWNED VEHICLES

2005 NISSAN Pathfinder SE

POWER
SUNROOF,
74,000KM



\$21,995**

2002 CHEV Trailblazer LS 4x4

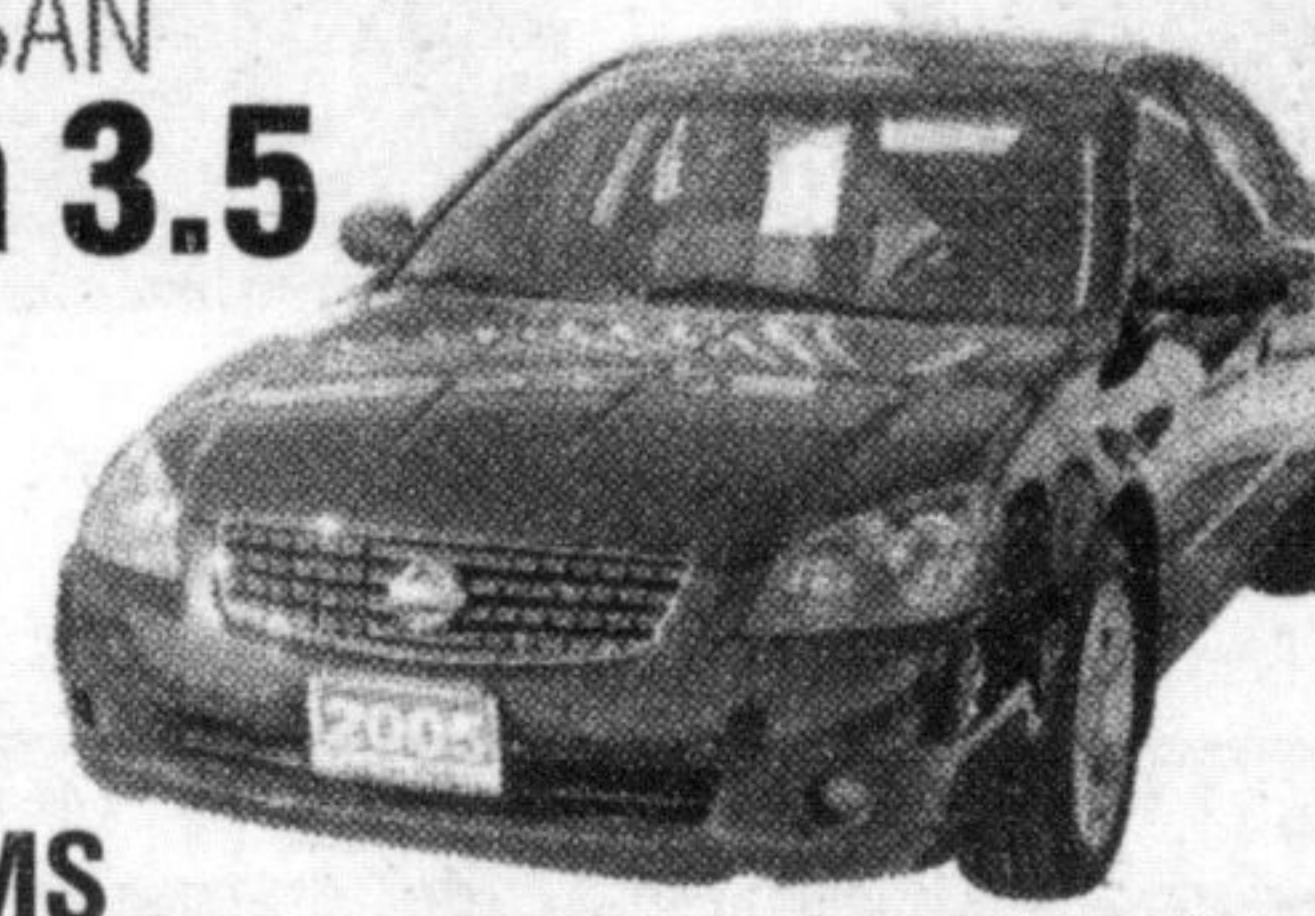
ONLY
168,000 KM



\$7,995**

2005 NISSAN Altima 3.5 SE

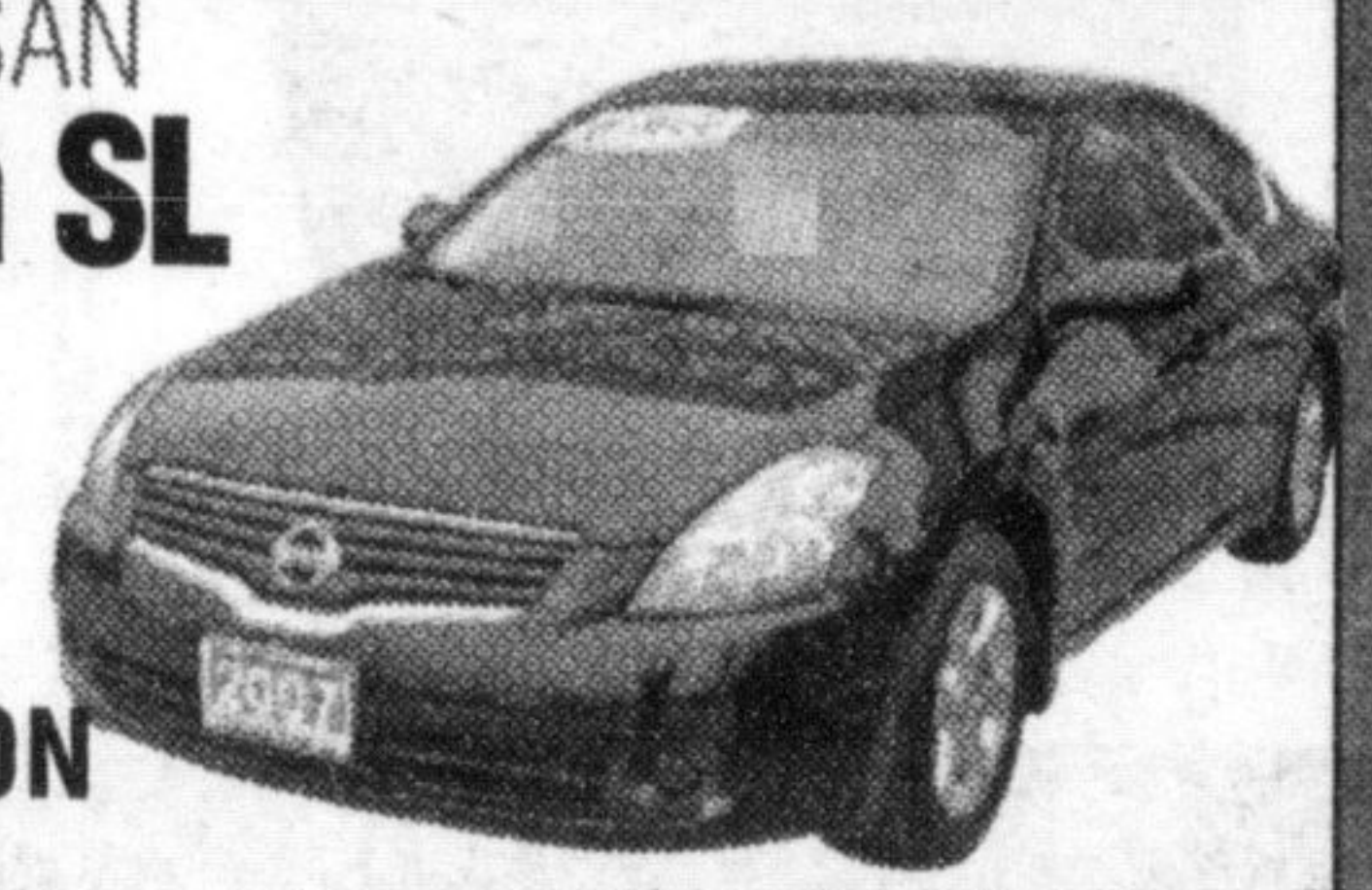
LEATHER
83,000 KMS



\$14,495**

2007 NISSAN Altima SL

WITH
NAVIGATION
60,000KM

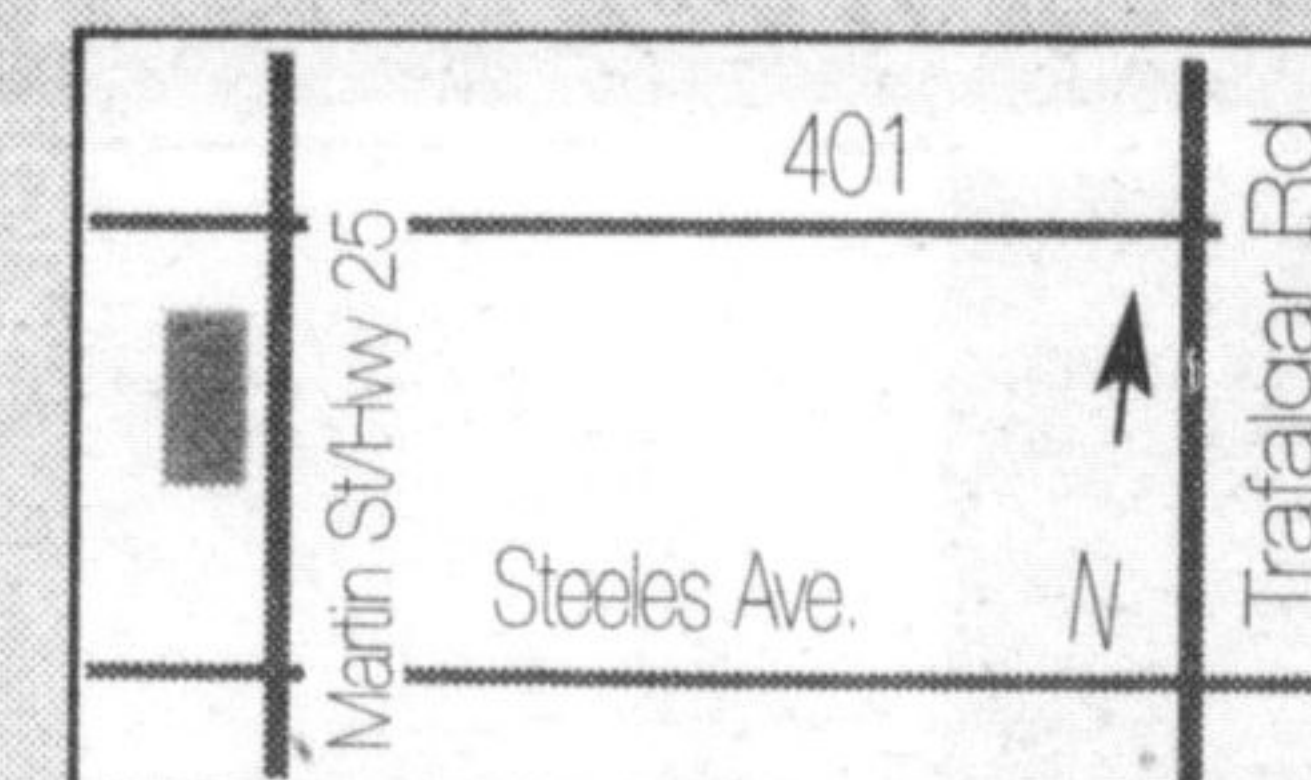


\$21,995*

Milton's
**NORTH END
NISSAN**
LTD.

610 MARTIN ST, MILTON
905-878-4137

SALES DEPT. HOURS:
Mon.-Thurs. 9:00 - 9:00
Fri. 9:00 - 6:00
Sat. 9:00 - 5:00



www.nissan.ca



SHIFT

**Prices are for 2009 Nissan Versa Sedan B4EG59 BK00/ 2009 Nissan Rogue Y6RG19 AA00, are plus freight of \$1325/\$1400, air tax, fuel tax if applicable, security registration, PST, GST & Lic. *Prices for pre-owned are plus admin fee and security registration, PST, GST, lic. See dealer for full details. *Lease price for 2009 Nissan Versa HB B5LG7 BN10 is at 1.9% APR. Residual is \$5,643.32. Total lease obligation \$13,740 plus taxes. Lease based on 24,000kms/year. 10¢ per excess km. **Price plus security reg. \$185, administration fee \$149 and taxes.