

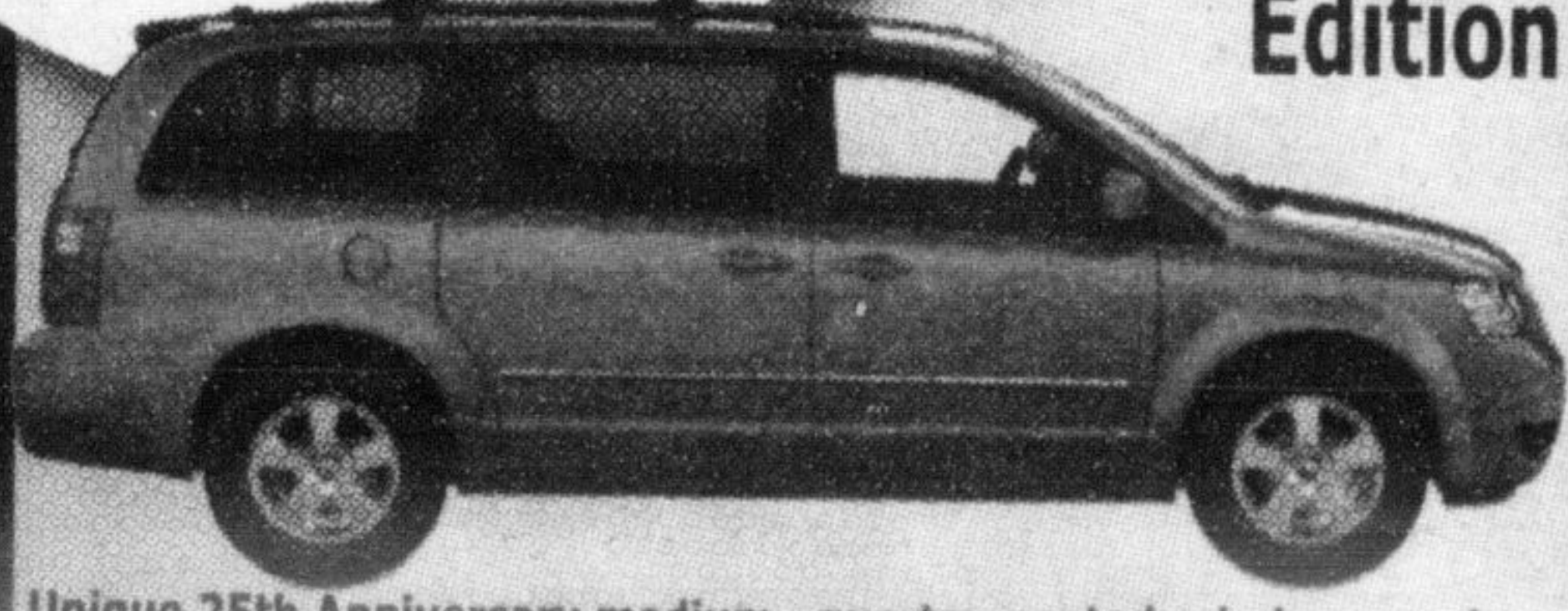
# Hunt

Chrysler Jeep

## WE BUILD CHAMPIONS

# WITH THE LOWEST PRICES OF THE YEAR! ON OUR MOST FUEL EFFICIENT VEHICLES.

**7 ARE ON THE WAY!**  
So hurry in, and put your name on one!



**2009 Grand Caravan 25th Anniversary Edition**

Unique 25th Anniversary medium slate gray cloth seats, leather wrapped steering wheel with audio controls, power second row windows includes power windows express up/down with passenger express down, 3rd row power quarter vented windows, unique 25th Anniversary 17" aluminum wheels with AS Touring tires, body colour, power, heated, foldaway exterior mirrors, Body colour lower side sill applique, Badge 25th Anniversary Edition.

Cash Discount **\$5,500\***  
OR **0% Financing** (for 60 mths.) **PLUS \$1000 Cash Back**

**2009 Dodge Caliber SXT**



Cash Discount **\$3,750\***  
**2.99% Purchase Financing** APR (for 36 mths.)

OR CHOOSE **0%** for 60 month finance  
**1.79%** for 72 month finance  
**2.49%** for 84 month finance

**2009 Dodge Avenger**



Cash Discount **\$5,250\***  
**2.99% Purchase Financing** APR (for 36 mths.)

OR CHOOSE **0%** for 60 month finance  
**1.79%** for 72 month finance  
**2.49%** for 84 month finance

**2009 Dodge Ram 1500 Crew Cab**



Cash Discount **\$7,500\***  
**2.99% Purchase Financing** APR (for 48 mths.)

OR CHOOSE **\$1,750 CASH BACK PLUS**  
**0%** for 60 month finance  
**1.79%** for 72 month finance  
**2.49%** for 84 month finance

**Gary's PRE-OWNED SPECIALS** All Safety & E-Tested!

**2006 DODGE Caravan SE**  
6cyl, auto, air, pw, pl, only 54,000kms, balance of factory warranty. P3843  
**SALE PRICE \$10,888**

**2006 CHRYSLER 300 Touring**  
6 cyl, Sunroof, Aluminum Wheels, Power Driver Seat, Balance of Factory Warranty. Only has 59,988 kms. P3829  
**SALE PRICE \$14,888**

**2008 DODGE Dakota SXT Club Cab**  
6 cyl, Auto, Buck Seats, Fog Lamps, Air, P Windows, Lock Must See. Only 18,000 kms. Bal of Factory Warranty, P3816  
**SALE PRICE \$19,888**

**2007 JEEP Wrangler "Sahara"**  
6 cyl, air, auto, with 49,000 km, p. windows & locks, 2 tops, balance of factory warranty. Stk P3828  
**SALE PRICE \$25,888**

**2005 DODGE Dakota SLT Club Cab**  
Sport group bucket seats, 4.67L 8 cyl., auto, trailer hitch, p. driver seat, alum wheels, only 33,000 km, balance of factory warranty. Stk P3804  
**SALE PRICE \$15,488**

**2007 DODGE Ram 1500 SLT Quad Cab 4x4**  
8cyl, air, p.driver seat, pl, pw. Bal of factory warranty. Former rental. Stk P3810.  
**SALE PRICE \$23,988**

**2008 CHRYSLER Pacifica Sport FWD**  
3.8L V6, auto, alum wheels, p.front seat, keyless entry. Only 18,400 kms. Balance of Factory warranty. Stk P3709.  
**SALE PRICE \$20,888**

**2005 DODGE Ram 1500 Reg Cab**  
8 Ft Box, Air, Yes, AWD. Stk#P3821  
**SALE PRICE \$9,888**

**2008 CHRYSLER Sebring Touring**  
6 cyl, Auto, Air, P Window & Locks, Balance of Warranty. Only 24,000 kms, Stk # P3749  
**SALE PRICE \$15,988**

**2008 DODGE Calibre SXT**  
Auto, Air PW, PL, Aluminum Wheels, Fog Lights, 32,000 kms. Stk# P3673.  
**SALE PRICE \$13,988**

# Hunt

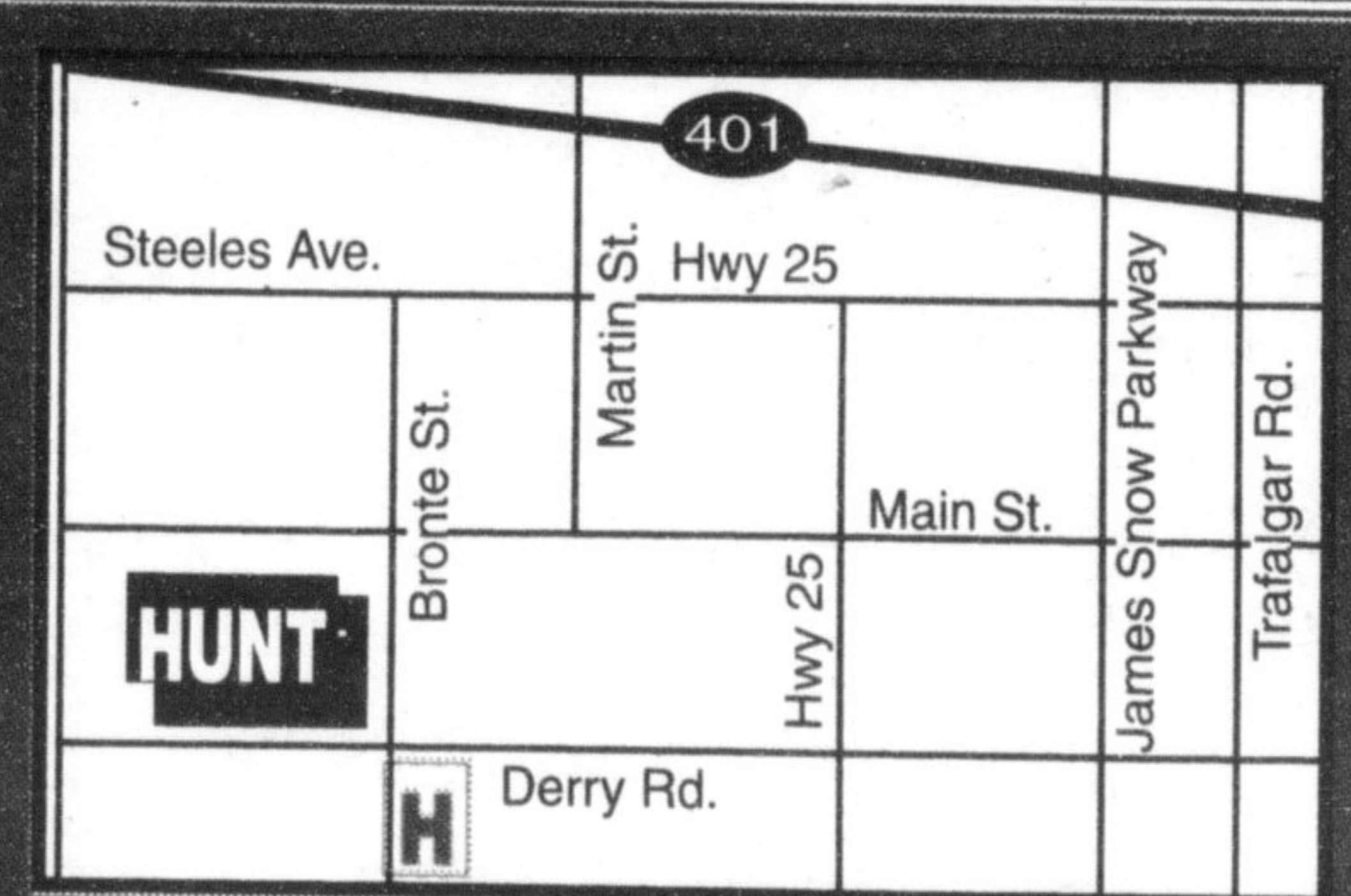
Chrysler Jeep

Milton: (905) 876-2580  
Toll Free: 1-866-848-8816  
Email: sales@huntchrysler.com

Drive that extra mile!  
We will make you smile!



**500 BRONTE ST. S., MILTON**



SALES: Mon-Thurs 9-9, Fri. 9-6, Sat. 9-5  
SERVICE: Mon-Fri 8-5, Tues. 8-8, Sat. 8-12  
SERVICE/PARTS:  
www.huntchrysler.com  
www.huntchrysler.ca

Wise customers read the fine print. \*Pre-owned models prices are plus PST, GST, admin fee & lic fee due on delivery. Vehicles Stk# 3673 & Stk # P3810 former daily rentals. \* Special financing rates cannot be combined with cash consumer discounts. Finance rates and terms vary by model. OAC. See dealer for full details. Ad expires July 21, 2009.