

# RE/MAX REAL ESTATE CENTRE

INC., BROKERAGE

22 Ontario St. S.,  
Milton, ON  
**878-7777**

SRE • CANADIAN CHAMPION Wednesday, July 15, 2009

## Darryl FLOWERS

Broker

"PLANTING ROOTS IN THE COMMUNITY"

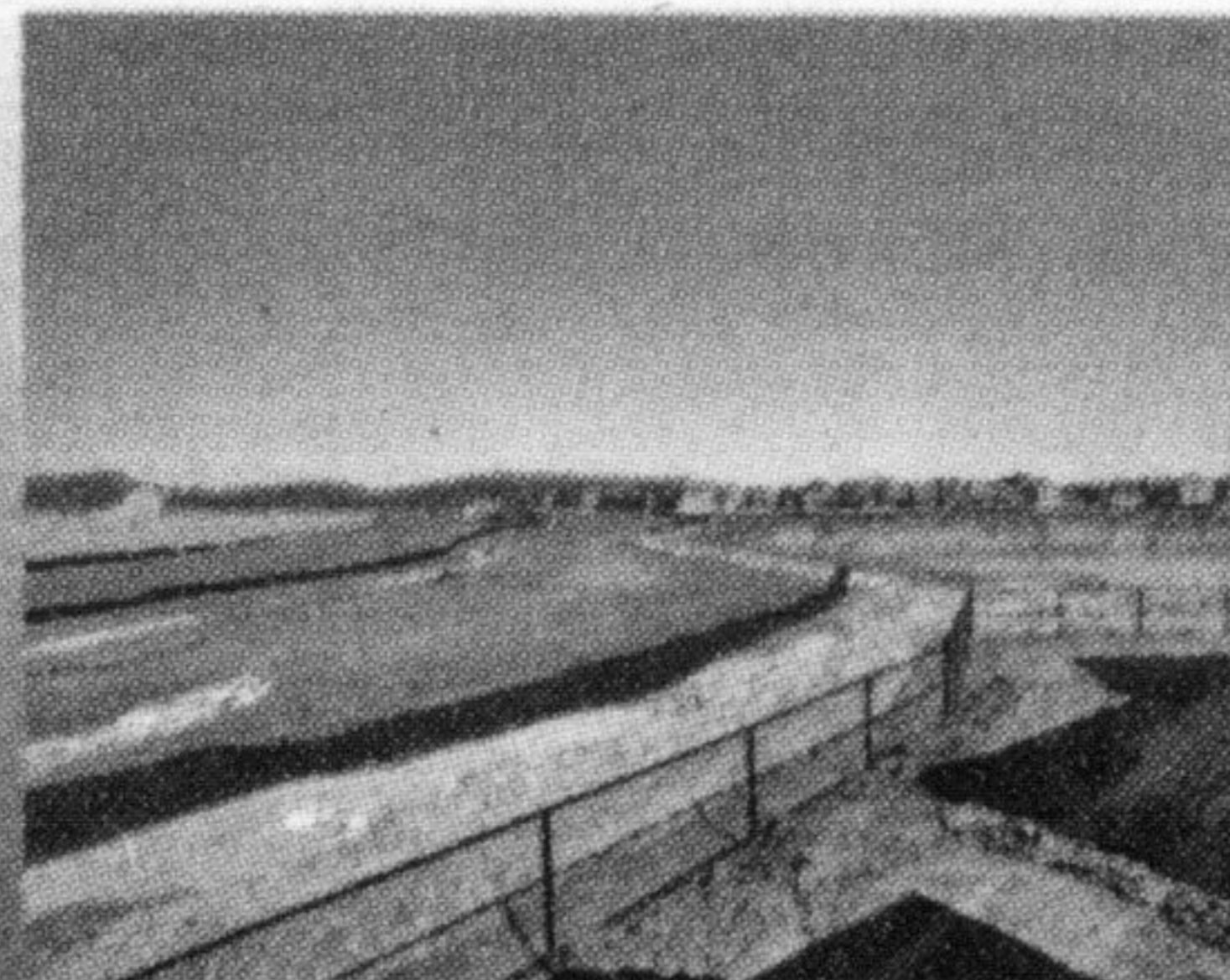
Direct 647-407-5061  
flowers@remaxcentre.ca



### Another One Sold!

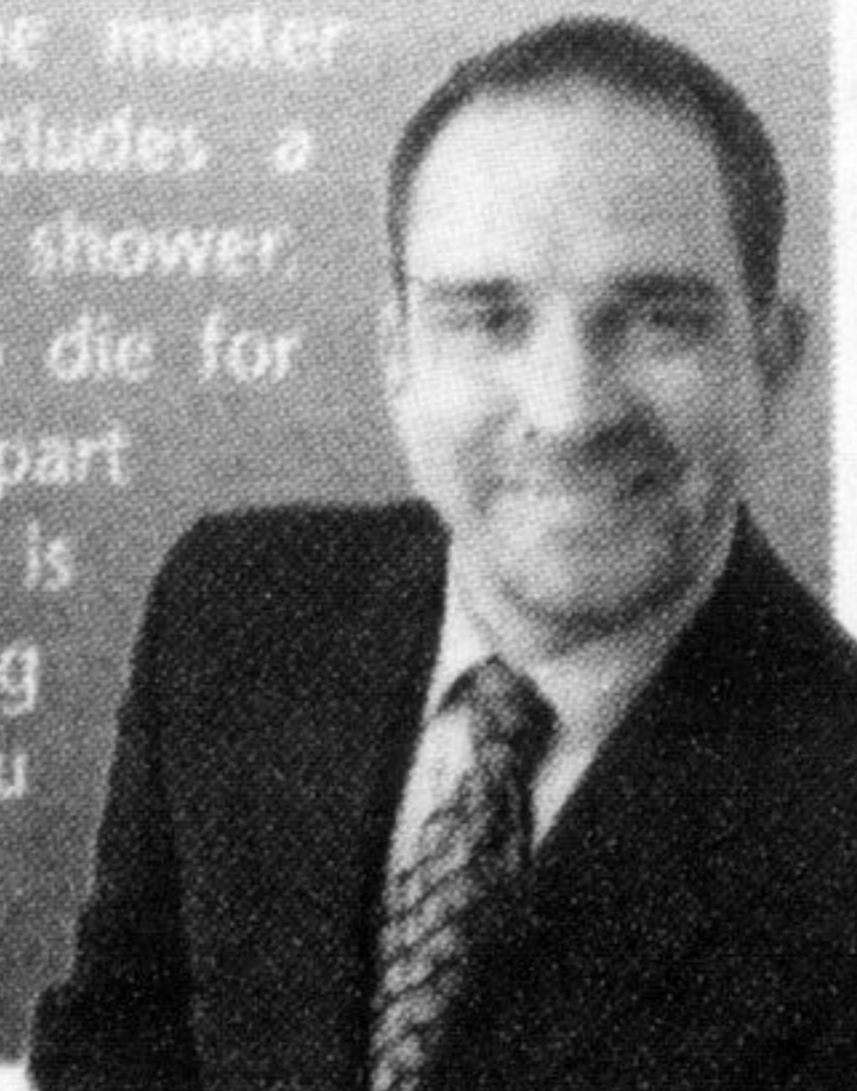
#### Greenpark Gem

This 1583 sq ft townhouse located in Burlington has everything. Beautifully landscaped yard with an extra large patio 3 bedrooms open concept main floor with a large eat in kitchen. Upstairs the master bedroom has a walk in closet and ensuite with a soaker tub. The best part about this home is that it is located directly across from a park. At this price what more can you ask for! \$304,900.



#### Stunning View!

This 2800 sq ft home has 4 bedrooms and has been upgraded all over. Fall in love with the master ensuite that includes a seamless glass shower. The layout is to die for and the best part about the home is the view! Backing onto a ravine you get views of both a pond and the escarpment making the back yard perfect for solitude and entertaining. \$579,000.



### Pam Furniss

Sales Representative

905  
**878-7777**



### HOT NEW LISTING



### DON'T MISS THIS ONE!!

This spacious 3 bed, 2 1/2 bath townhome features backyard access from garage to a 110 foot deep lot and high end stainless steel appliances in the kitchen. Heck, we're even throwing in the washer and dryer! **\$319,500.**



### Carol Brooks

Sales Representative

Will Provide you with...  
**PERSONAL & KNOWLEDGEABLE SERVICE WHEN BUYING OR SELLING A HOME IN MILTON & SURROUNDING RURAL AREAS**

905-878-7777  
www.carolbrooks.ca



### SCHOOLS OUT!



#### NEW PRICE

#### STONE SCHOOLHOUSE CAMPBELLVILLE

One of a kind (circa 1860) beautifully upgraded and improved with unique open concept floor plan...entertainers delight! Bright sunroom addition over looking perennial gardens & lovely country side views. Office/den complete with high-speed. Upper level dormers allowing lots of natural light and expanded 2nd level. 3 bdrms, includes spacious master complete with ensuite & fireplace. An oversized separate garage doubles as a workshop with 220amps. Must be viewed to fully appreciate this unique home. **\$649,999.**

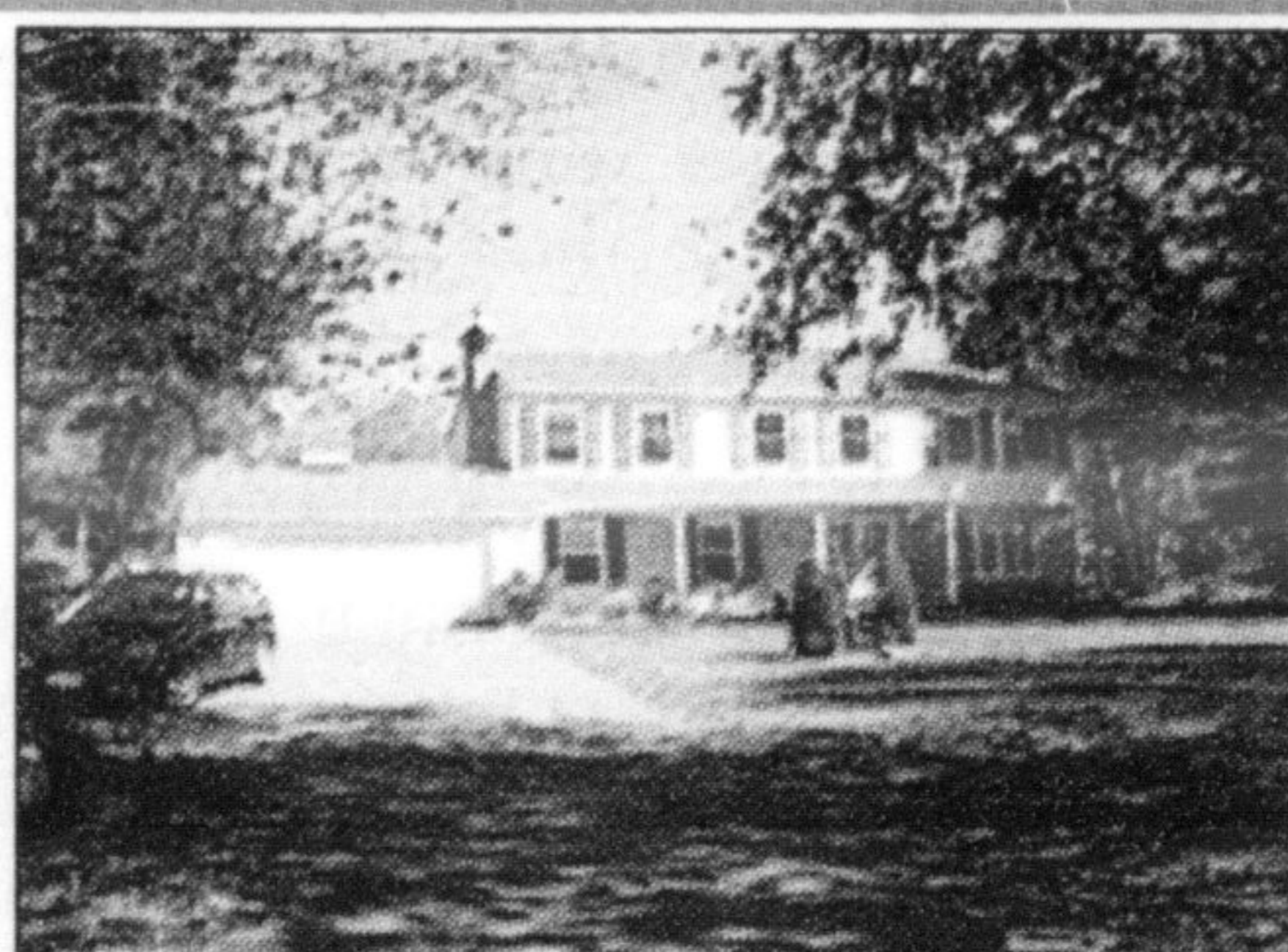
### SOLD



#### NEW LISTING

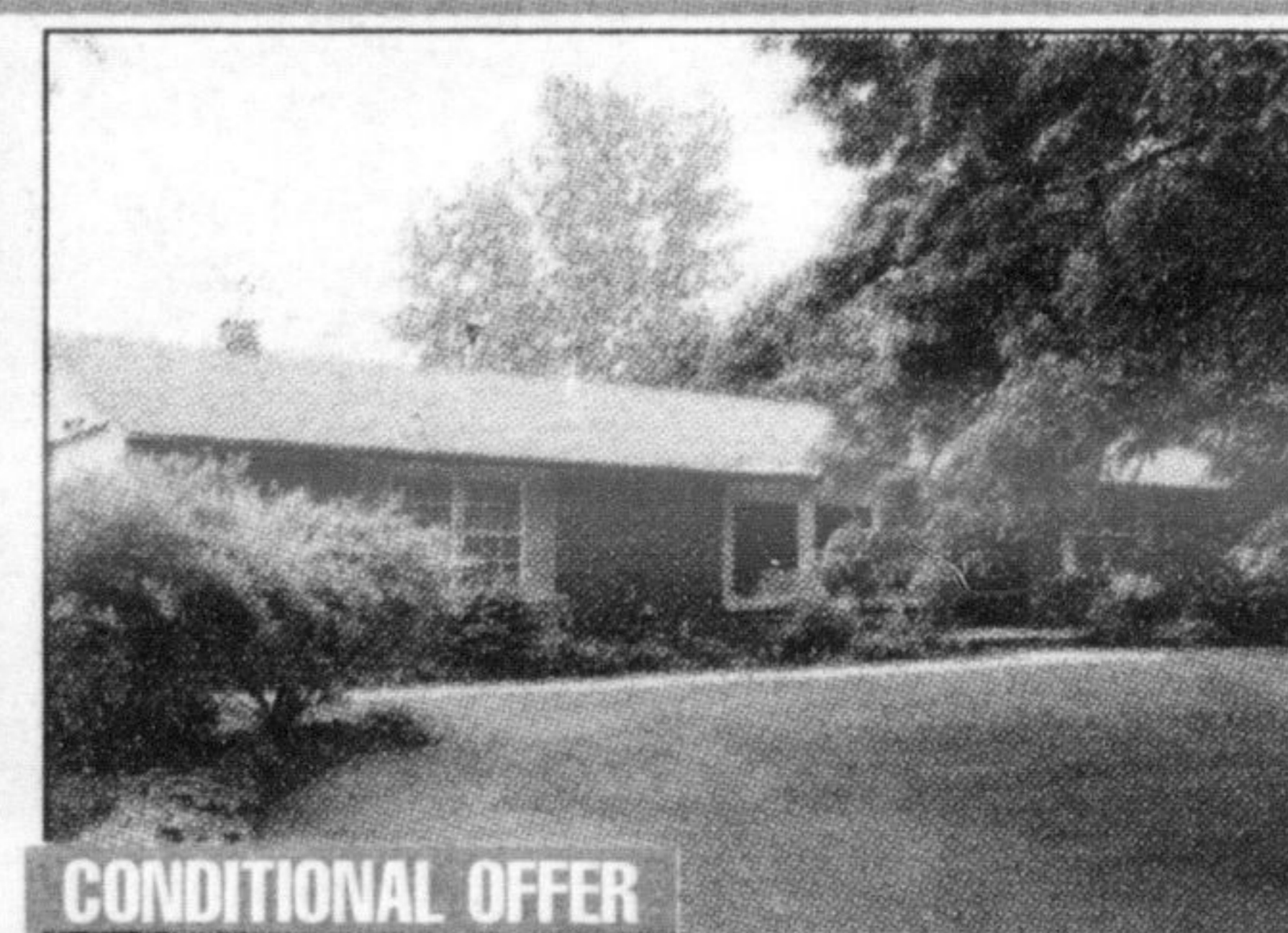
#### ATTRACTIVE ALL BRICK 4 BEDROOM

A Mattamy home (Pilgrim model) with large kitchen and eat at breakfast island, open concept family room with stone fireplace. Main level has ceramics & hardwood floors. Separate living room and combined dining room. Freshly painted throughout. Great size master bedroom with ensuite. Finished lower level rec room. Rear yard is completely fenced. **\$369,000.**



#### LARGE CUSTOM BUILT HOME

1 acre tucked well off Guelph Line. 5 bdrms w/main flr family rm, eat-in kitchen, sep. dining & living rms, 2 fireplaces, 3 baths, main flr laundry & mud rm. Oversized 2 car garage, in-ground pool, fenced yard & paved parking. Walk to Brookville P.S. & park & easy access to major hwy's, golf courses & hiking trails. **\$579,000.**



#### CONDITIONAL OFFER

#### FAR FROM THE MADDENING CROWD

Very desirable location on top of the Escarpment not far from town backing on to conservation. This lovely 3 bedroom bungalow has been renovated and upgraded top to bottom. Just move in and enjoy the bright new kitchen, gleaming hardwood floors, 3 modern bathrooms, 2 fireplaces, large bump out solarium window, replacement windows, 2 car garage, large finished rec room, fantastic countryside views from all windows, beautiful perennial gardens & an abundance of wildlife and much more. This location rarely becomes available! **\$587,000.**

Milton, Campbellville, Hornby, Georgetown, Acton, Limehouse, Norval, Terra Cotta, Ballinafad, Rurals North of Huttonville, Erin RR#2

plus Mississauga!

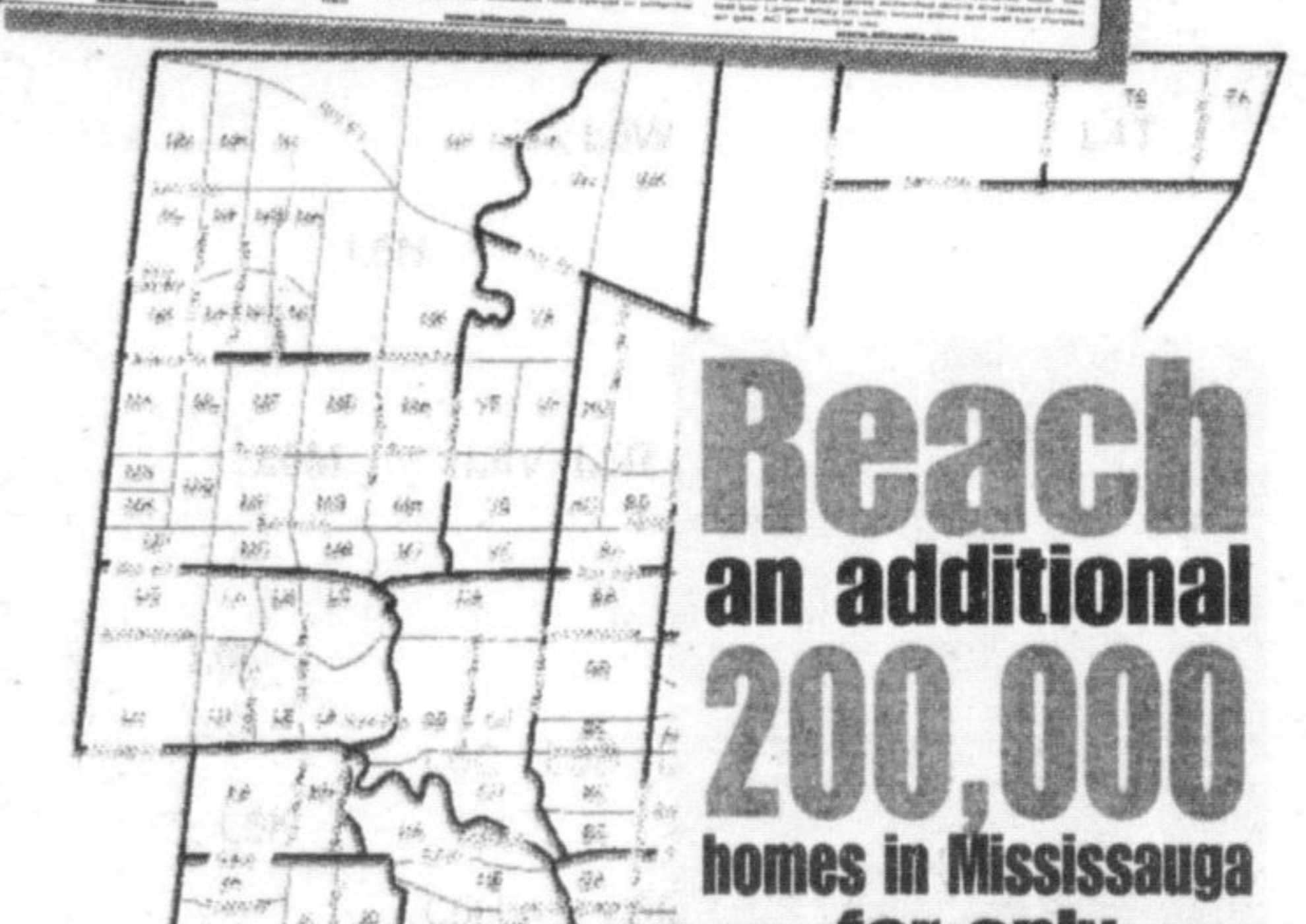
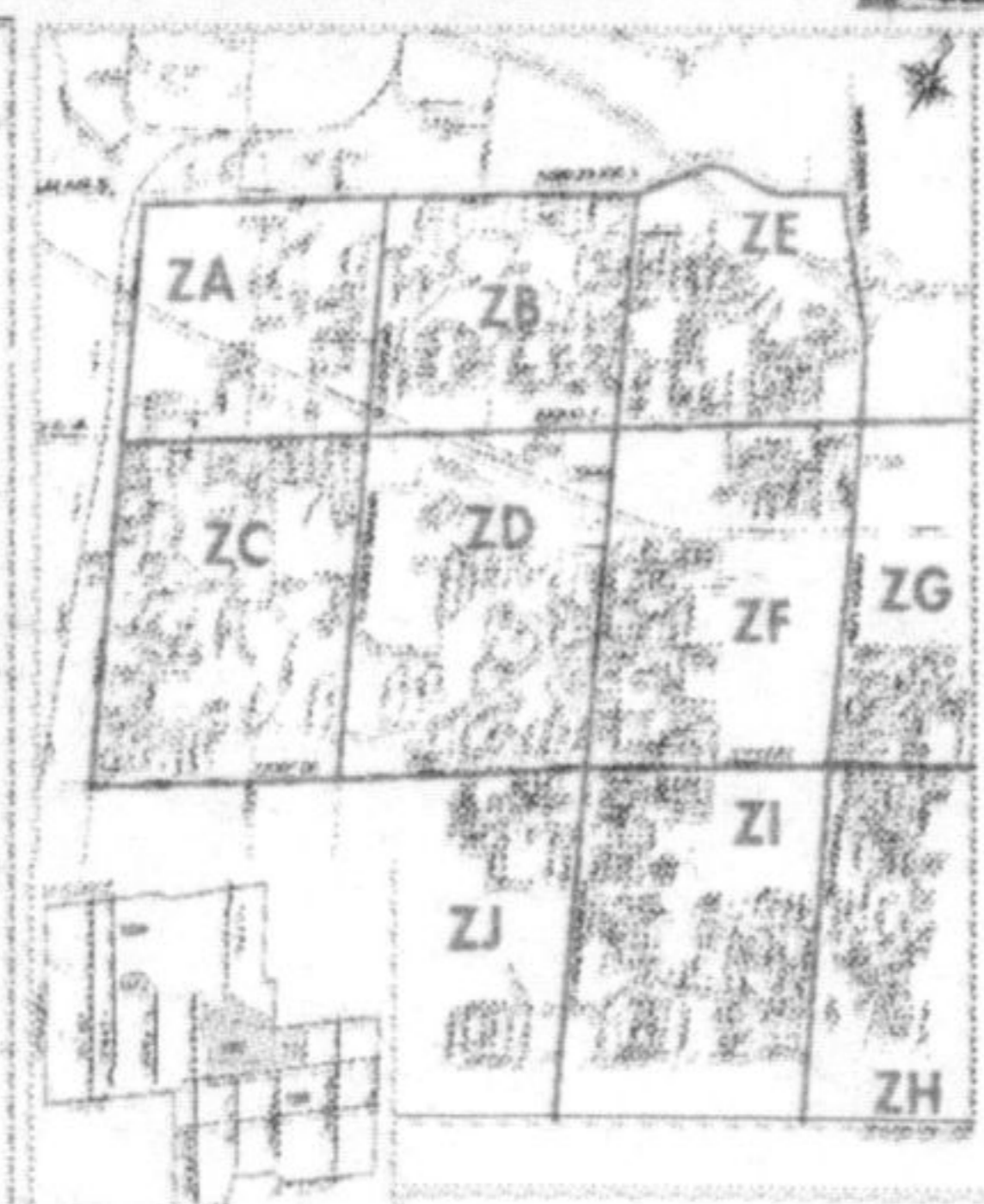
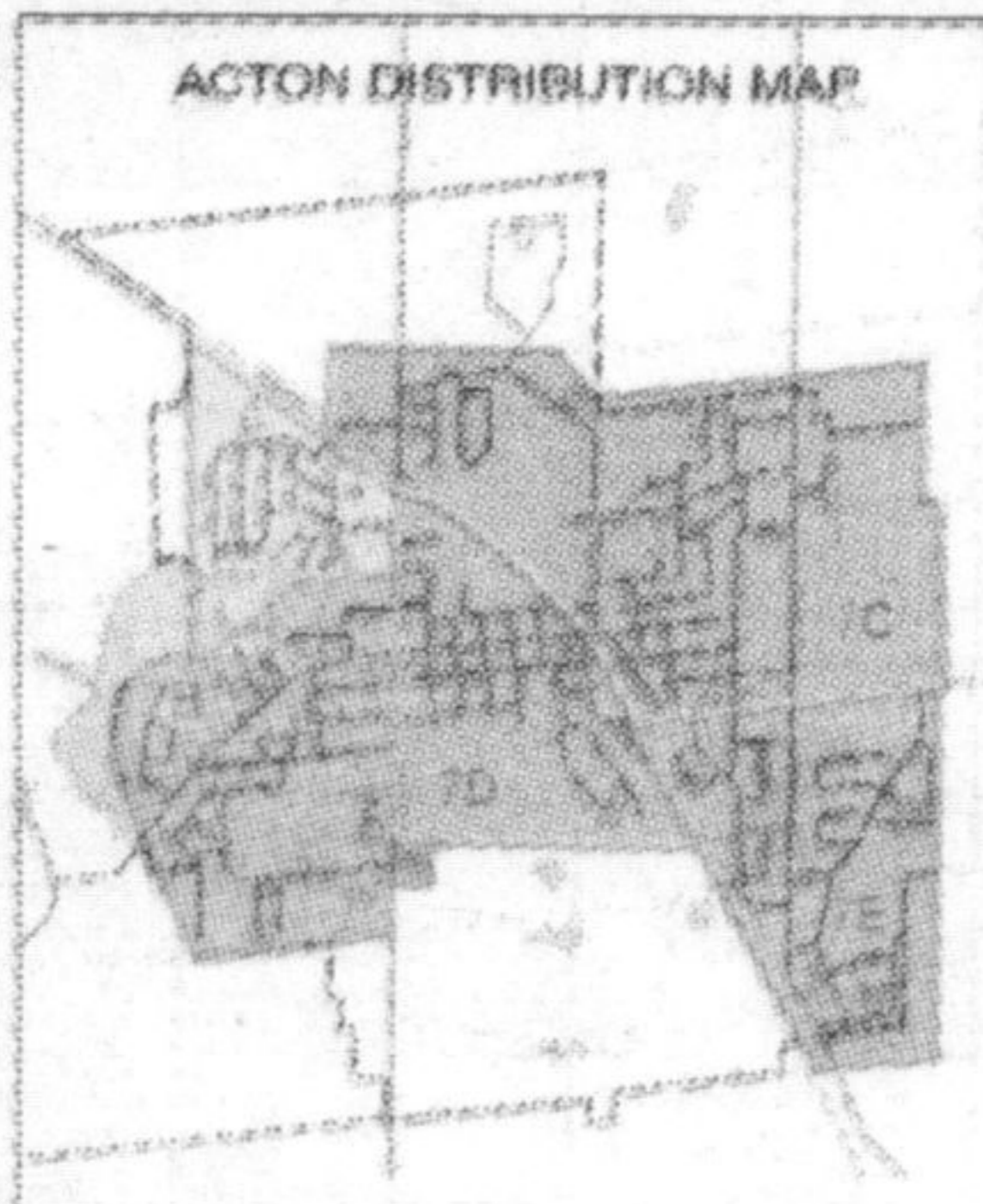
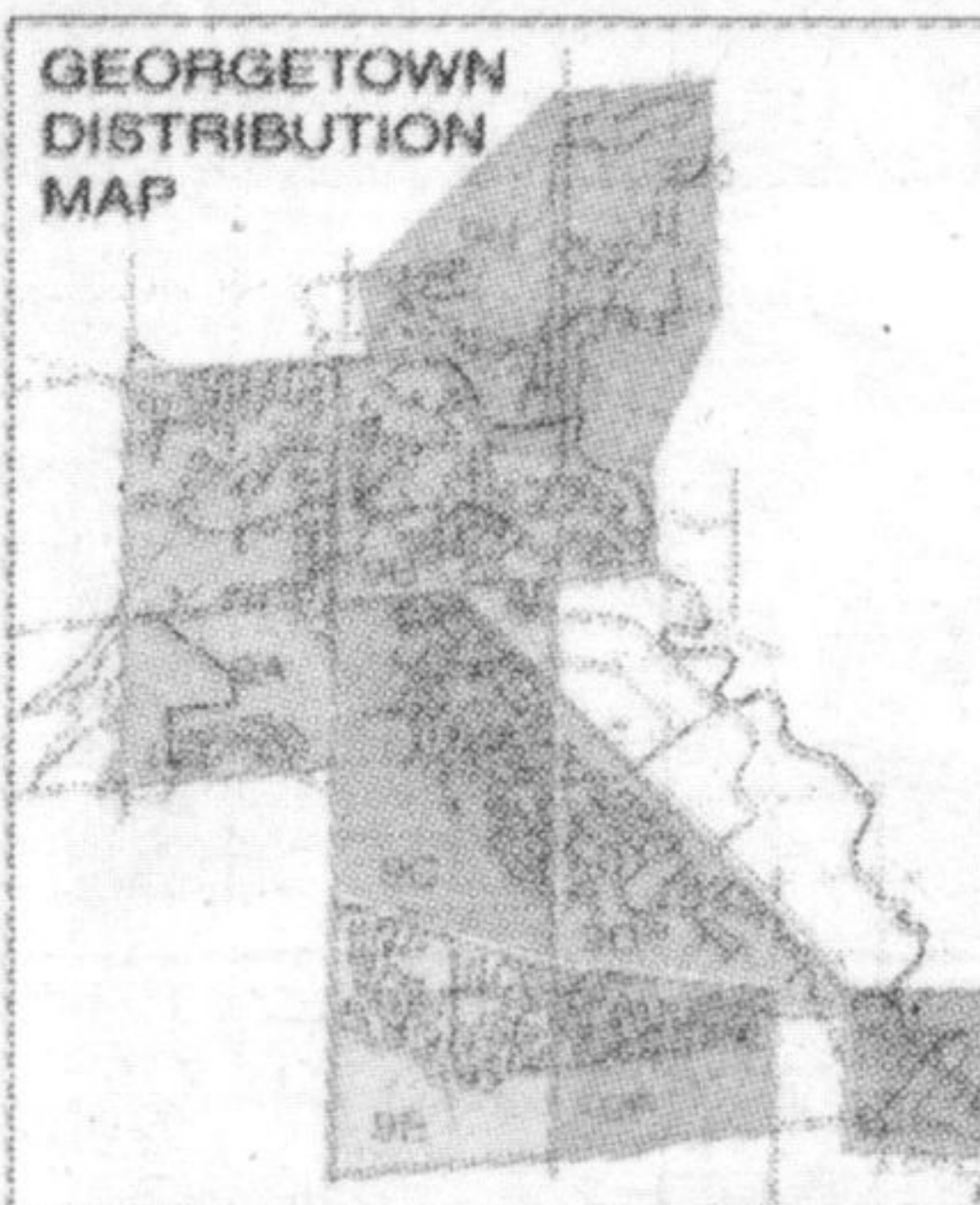
## Your Country Reach

Delivered to  
**51,500 or 251,500**  
homes per week!  
**You Decide!**

Your CALL TODAY!

Reach

With 999 listings in the Greater Toronto Area, you can reach 51,500 homes in Mississauga for only \$99. You Decide!



Reach  
an additional  
**200,000**  
homes in Mississauga  
for only  
**\$99**

You Decide!

Country Reach Single \$99 to 51,500 homes  
Mississauga plus \$99 to 200,000 homes

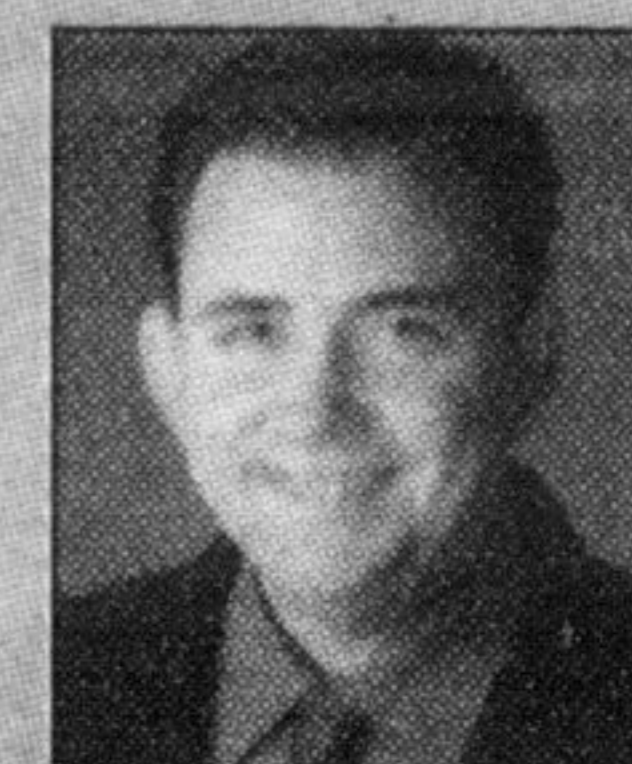
\$198 for combined reach of 251,500 homes!



### GLEN & GARY THOMAS



905-878-7777



Glen Thomas  
Broker



Gary Thomas  
Broker



**\$874,900**

#### EDGE OF MILTON

Just east of James Snow Parkway. Incredible country setting on 2.3 acres, huge 90 x 40 building and a charming 2900 sq.ft. home. Rare find.



**\$849,000**

#### BACKS ONTO BRONTE CREEK

Wow...5 year old custom built bungalow 1 minute north of 407 in Burlington countryside. Has riparian rights to Bronte Creek. 1.3 Acre property and a 2500 sq.ft. home with soaring ceilings and quality finishings.



**\$974,900**



#### NEW CHARLESTON HOME BROOKVILLE

Custom built 2500 sq.ft. bungalow on walkout elevation lot in Westchester Park in Brookville. It's not too late to modify the plan and make selections. Fabulous attention to detail with all finishings. Sides and backs onto trees. Contact for details

www.miltonproperties.ca

\* SALES REPRESENTATIVE \*\* BROKER