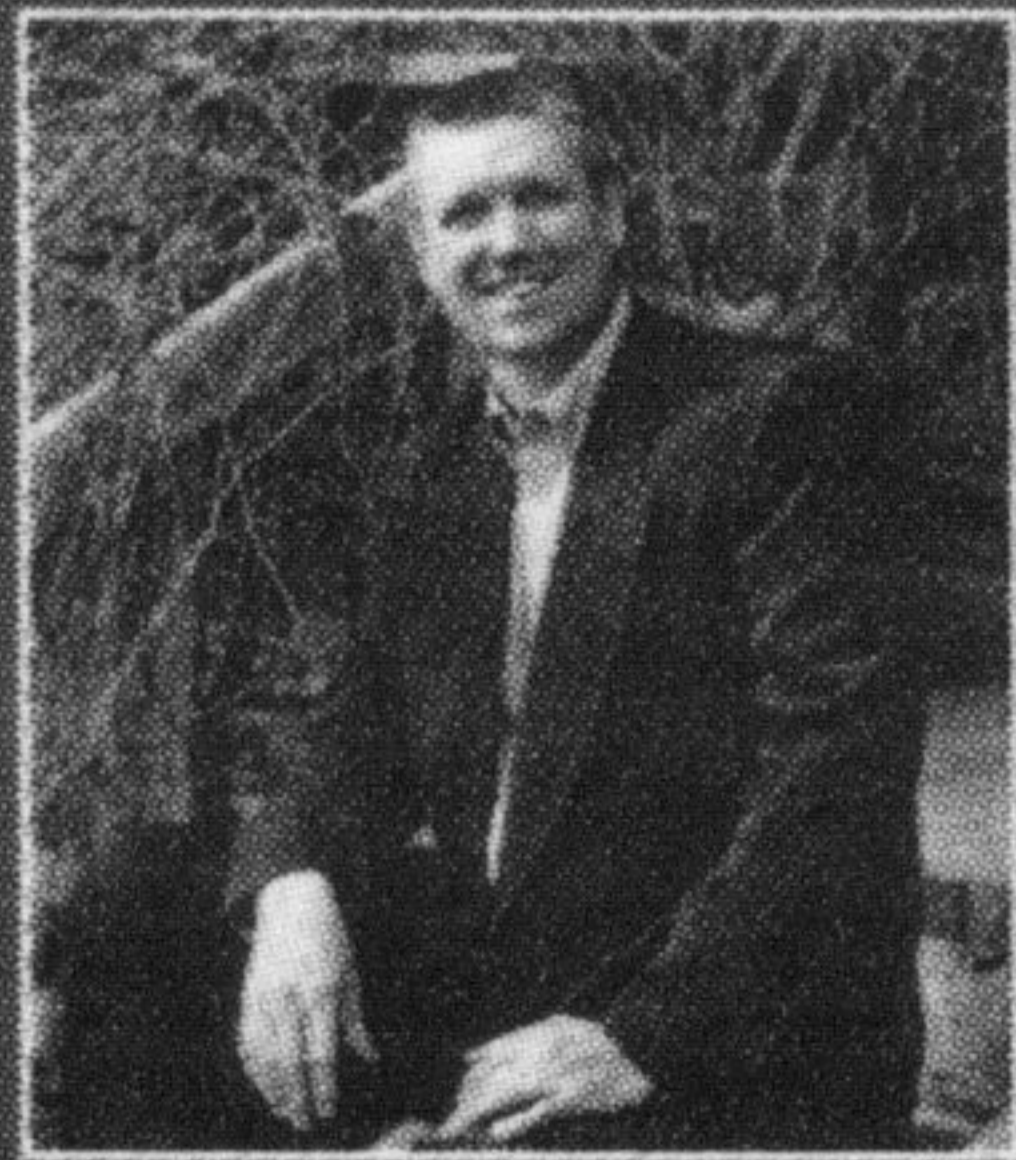




RE/MAX REAL ESTATE CENTRE

INC., BROKERAGE

22 Ontario St. S.,
Milton, ON
878-7777



MIKE MORGAN B.A.
Broker

See our new website!



Your Real Estate Experts

During these challenging times now more than ever it's important to work with agents who have dealt successfully with these market conditions before.

"Experience Counts"

(905) 878-7777

www.morganmclaren.com

LINDSAY J. MCLAREN

Sales Representative



CHARMING BUNGALOW IN THE HEART OF "OLDE MILTON"

NEW PRICE



Three bedroom home sits on a large, mature lot and has an open layout. Features include eat-in Kitchen, DR & LR. The backyard provides plenty of privacy with room for a patio or deck. This is the ideal starter home or it provides a great opportunity and location if you are looking to renovate. **\$275,900.**

THE ULTIMATE LOCATION



... for this grand home of almost 3500 square feet of luxury overlooking a stream, woodlot and full view of the Niagara Escarpment. Beautifully appointed with rich cabinetry, hardwood and slate with family room boasting a two-storey high ceiling. Bonus features include 2-sided fireplace in master, main level library and a huge premium lot. **Call Mike...\$698,900.**

INCREDIBLE IN-LAW SUITE...

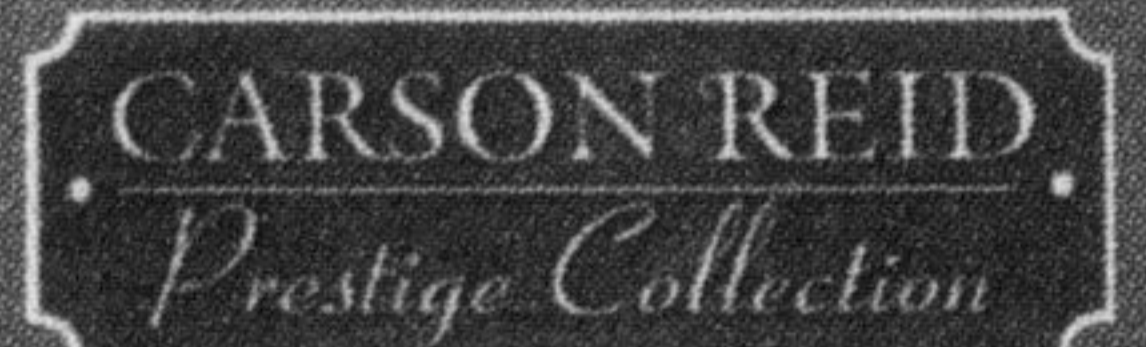


will make the whole family happy. Immaculate raised bungalow expanded to 5 bedrooms and 4 washrooms with hardwood and ceramic flooring. Custom hickory cabinets, built-in appliances, 2 gas fireplaces, hot tub and so much more. The design quality and comfort will thrill you. The perfect set up! **Just listed, call Mike \$444,900.**



The Carriage Manor
3265 sq. ft.

Lindsay J. McLaren is the exclusive agent for



BRIDLEWOOD

Elegant country estate homes in Campbellville from the high \$800,000. See our Website for further details.

ON THE EDGE OF TOWN



nested into a mature treed backdrop, this brick bungalow sits deep on its 100' by 150' lot. Boasting a large bright living room with hardwood floors, separate dining room with walkout to a screened in deck, 2 bedrooms and main floor laundry. A long, paved driveway to a spacious double garage. Well maintained with recent upgrades. **Just listed, call Mike: \$374,900.**

DARE TO DREAM



Impressive & renowned First Class Equestrian Center located on 99 acres in Puslinch. 5mins NW of Mohawk Raceway. This remarkable property boasts a beautifully renovated 6 BR Century stone farmhouse, secondary residence, Bank Barn w/ 21 stalls & Riding Arena w/ viewing rm, Upper Stables w/ 50 stalls & w/ Viewing Rm, Small Barn w/ 8 stalls, Implement Shed & Drive Shed. 42 paddocks, Sand Track, Sand rings, run-in shed & so much more. See www.morganmclaren.com for all details.

SOLD SIMPLY GORGEOUS



Immaculate home, shows just like a Model. This 3 bdrm home in the heart of Milton features a new, stunning custom Kitchen with granite counters, built-in stainless appliances & skylight. Beautiful LR with double sided fireplace to the DR. Master w/ huge walk-in & rec. rm w/ FP & 3 pc. bath. The yard is spectacular with patio, deck, gardens & plenty of mature trees. **Please call Lindsay McLaren for all the details. \$389,900.**

WHERE THE TREES ARE TALL...



...and the land is vast. Set in the heart of Timberlea, this brick, 2 storey, 4 bedroom home boasts of quality upgrades, a brand new maple kitchen, 3 renovated washrooms, family room with fireplace, walkout to deck and lush gardens. Professionally finished basement with rec room and 2 more rooms. Parking for 4 cars on driveway. Quiet mature area living. **\$429,900. CALL MIKE.**

WONDERFUL CHARACTER HOME



Located close to downtown this renovated 2 storey home is beautiful! It features a custom kitchen with bleached oak cabinets, granite countertop & island. The kitchen overlooks the 4 season solarium w/ glass ceiling, ideal spot to sit and relax while enjoying views of the private gardens. Main floor also features laundry room, 3pc bath, Liv Rm, Din Rm, Office & Family Rm. Upstairs has 3 bedrooms & 4pc bath. **Call Lindsay to view today. \$389,500.**

TEAM HILSON



TERI LYNN & NORM HILSON
Sales Representatives

MEMBER OF THE REMAX HALL OF FAME
thilson@sympatico.ca • ndhilson@sympatico.ca
www.terilynnhilson.com • www.listedsold.com

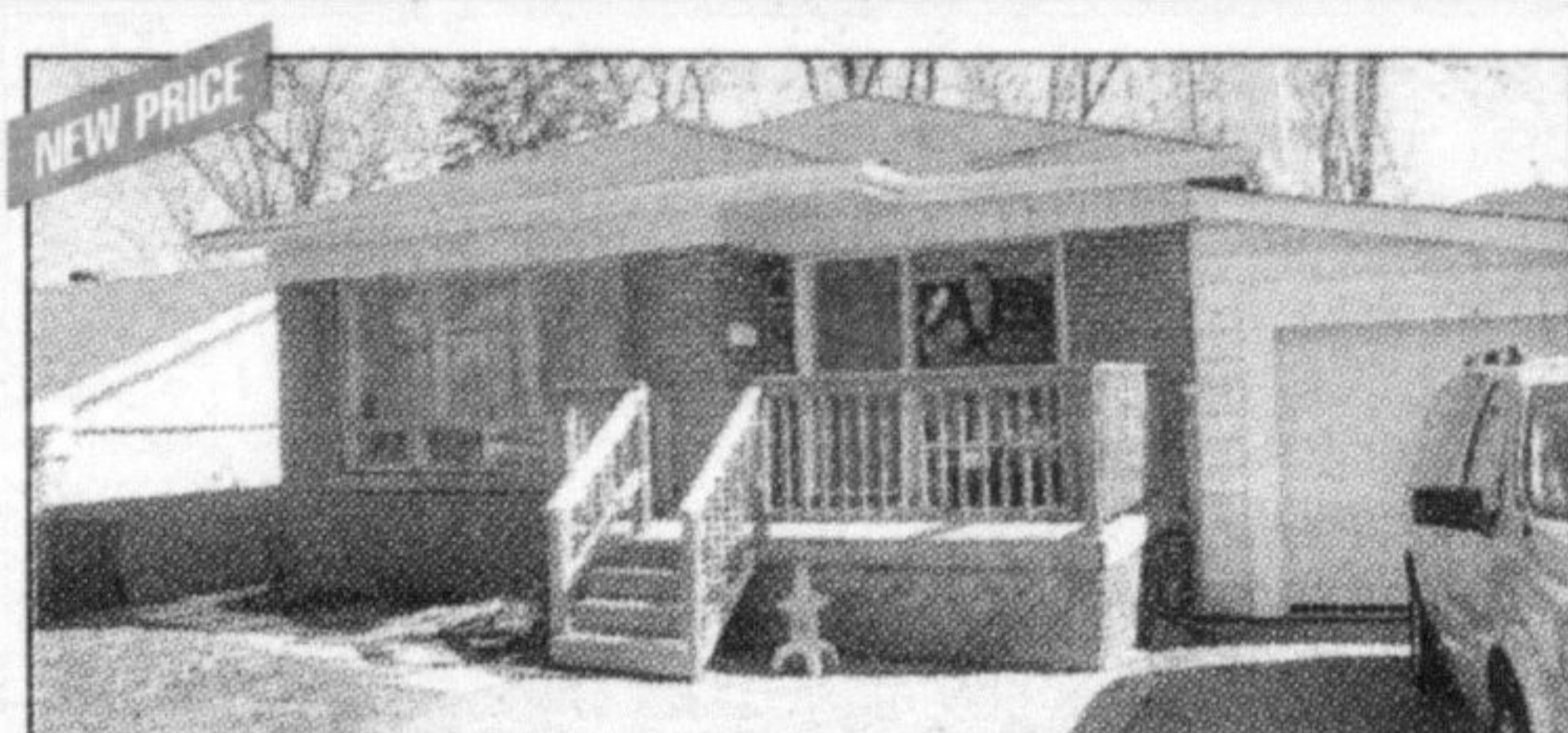
905-878-7777

WHAT RECESSION?

OUR LISTINGS ARE STILL SELLING!
CALL US TODAY FOR A FREE MARKET EVALUATION OF YOUR HOME TO SEE HOW IT CAN WORK FOR YOU!!!!

- Mortgage Preapprovals
- Free Comparative Market Analysis
- Open Houses
- Virtual Tours
- Professional Feature Sheets
- Your Own Domain Name Of Your Listing

We will insure your home against defects for the entire listing period and provide insurance on new resale purchase for 6 months absolutely FREE!



INVESTMENT POTENTIAL!

Located in a great part of town close to schools, transit, shopping this bungalow has had a major facelift offering a new kitchen with granite island for easy food preparation, loads of rich dark cabinetry, newer appliances, and beautiful ceramic flooring. The livingroom / diningroom offers gorgeous dark bamboo flooring with easy access to kitchen for entertaining. The main floor offers 3 large bedrooms with large windows and dark bamboo floors. Walk down a few steps and you can relax in a cozy familyroom with large sliding doors to the backyard. The basement has its own self contained apartment complete with kitchen, livingroom and two bedrooms. **\$309,900.**



CUSTOM BUILT HOME

Here it is! On sought after street this home has been looked after with the upmost care. All major work has been completed with quality workmanship. Located on a great street close to everything Milton has to offer. The home offers double car drive with double attached garage with access to the basement level, newer front steps and railings, garage door, all bathrooms, carpet upstairs, eaves trough and soffits, driveway, furnace, hot water tank, water softener, roof, windows, front and back doors, familyroom carpet, hardwood floors. Just move in and enjoy this beauty. **\$429,900.**



EXCEPTIONAL SEMI

Fantastic corner semi located close to shopping, transit, schools, this semi offers large open kitchen with views to the family room, formal dining area with easy access to kitchen for entertaining. The home offers garage access, large deck with hot tub, upgraded cabinetry in kitchen, centre island, jack and jill bathroom on upper level, master ensuite, upper level laundry with large linen closet three good sized bedrooms. **Call Norm and Teri Lynn for your personal tour!**



Beverly Frosch

Sales Representative

Direct: 905-691-1738
Email: beverly@frosch.ca
www.frosch.ca



BEAUTIFUL ESCARPMENT VIEW!

This home features a one of a kind premium lot set on a ravine, with escarpment and pond views! At 2800 sq ft plus a walk out basement, 4 Bdms, 2.1 Baths, the ensuite is stunning with a seamless glass shower. Go to www.frosch.ca to see all the pictures! **Priced at \$579,000.**



3.4 ACRES!

Custom built home, less than 5 years old. Bungalow with 4 bedrooms on main floor and walk out patio to inground pool area. Basement has a full in-law suite, and walkout to private patio and gardens! Pictures and virtual tour available at www.frosch.ca

Want to target your message

Do you want to reach the new home owners in town or are you interested in the older part of town, or both.

We can deliver your flyer to the exact demographics you want to reach.

\$46 PER 1,000 FLYERS

The Canadian Champion

For your next flyer drop call:
Diane Wolstenholme,
Sales Representative
at 905-878-2341 ext. 212
dianew@miltoncanadianchampion.com



* SALES REPRESENTATIVE ** BROKER