

ReadersWrite

E-mail your letters to editorial@miltoncanadianchampion.com.

A tough but necessary decision

DEAR EDITOR:

Car owners are often faced with a difficult decision — do I pour more money into repairs or buy a new vehicle?

St. Paul's United Church is faced with the same dilemma about its building. Our sanctuary, built in the 1890s, needs significant repair and our Christian education wing — dating from 1964 — is woefully inadequate for our needs.

However, an even more fundamental issue has been the focus of debate at St. Paul's. How do we extend our Christian ministry into the community and beyond?

The conclusion that our membership has reached is that we can't do so if our entire focus revolves around maintaining our present building. Although we, like most of the town, regret that our historic sanctuary must be dismantled, a majority of our congregation have decided that it's time to stop pouring money into our aging facility.

We have been reluctant to debate this issue in the press, but we feel that it's important to fully explain St. Paul's position. Here are some facts that have helped us to make our decision after almost three years of study

and reflection.

Our largest expense after salaries is establishment costs. The cost of maintaining, repairing, cleaning and heating a large space that's not used to its full capacity is an ongoing drain to our budget. We're unable to do many Christian outreach projects because so much of our finances are directed toward the building.

And then there's the cost of repairs. A 2007 report estimated the cost of bringing our building up to basic standards at \$1.85 million. This would do little to improve the functionality of our building.

The development proposal to build a seniors' life-lease residence and a new, smaller church facility will accomplish several things, including:

- It will reduce the cost of maintaining our aging building and free up funds for more extensive and effective Christian outreach.

- The resale of the units will provide St. Paul's with a continuing revenue stream we can use for further outreach projects.

- A multi-functional space will allow us to have different worship styles and use our building more effectively.

- We will be fully accessible

to those with disabilities.

It has always been the intention of St. Paul's to save as many heritage items as is realistically possible. We have a committee that's tasked with determining whether the stained-glass windows, organ, bell tower, memorial items, corner stones and other artifacts can be saved and incorporated into the new building.

It's also our intention to construct an architecturally-pleasing building that will continue to reflect the commitment of the United Church to Milton. We're empathetic to the concerns that have been expressed by the church's neighbours.

So when a petition is circulated around town asking for signatures to "save the sanctuary," the real issue is whether the congregation of St. Paul's should be busy maintaining a large building that no longer meets our needs or whether we should be fulfilling our Christian calling to carry out the work of the United Church of Canada by reaching out to those who seek God's love and support.

**KATHY SELLERS, CHAIR
ST. PAUL'S UNITED
CHURCH COUNCIL**

Time to toss toad out or start dissection

• from LEGISLATURE on page A6

took up this past budget.

Other measures announced by the Province include reducing large corporation income tax to 10 per cent from 14 (Chudleigh advocates a deeper slash), cutting small business corporate taxes to 4.5 per cent from 5.5, and eliminating both the capital tax on business investment and the small business deduction surtax.

The intent of all this is to reduce the marginal

effective tax rate to about 18.6 per cent next July, less than the OECD average, from the current 32.8 per cent.

The METR is a measure of the disincentive to investment — the higher it is, the less businesses get out of new investments.

This is the toad that's on the table then — ugly on the surface but with complex innards. It's time for the Tories to decide if they want to simply toss it aside or start dissection.

Woman fatally burned in morning fire; maid saves 5-month-old baby

'Time Capsules' are gems of information extracted from past issues of the Champion and other publications in order to provide a window into Milton's past. Explanatory comment is sometimes provided to place the situation in context.

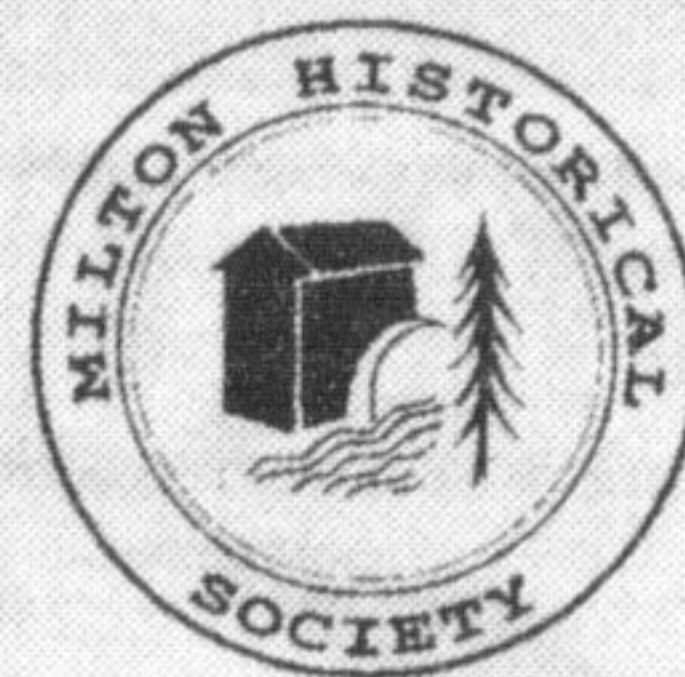
May 1913

Just before 7 a.m. on Monday a domestic employed by Mr. and Mrs. R.B. Galbraith was at work in the basement of their house, heard her mistress screaming in a bedroom upstairs, ran up and found Mrs. Galbraith standing in the room with her clothing in a blaze, and her baby lying on the bed. The girl snatched up the baby and added her screams to those of Mrs. Galbraith. Mr. and Mrs. E.J. Wilson, who live next door, ran in, and as they could see no rug in which to wrap the sufferer, picked her up, carried her downstairs, put her into a sink, turned on the water and rolled her in it until there was no sign of fire.

Fire broke out in the bedroom and the alarm was given, but before the brigade reached the scene Alex. Armstrong and Fred Maxted extinguished the flames with water from buckets. Mrs. Galbraith was rushed to a Guelph hospital by the 8:45 a.m. C.P.R. train. She is very badly burned from her waist down and is in a critical condition. The woodwork in the bedroom was charred and the furniture and bedding were destroyed. Later her death was reported at Guelph Hospital. She was survived by her husband and three children.

The Halton-Peel Baseball League, Milton, Georgetown, Acton and Brampton was organized. Milton was represented by Robert Fleming and N. Ryder. Milton will have a better ground than ever. It will be that in Livingston Park, used last year, but it has been leveled, the work being finished off by the use of a road roller. Mr. Livingston has been good

**Milton
Time
Capsules**



enough to give the club the use of the ground for the coming season in consideration of the work done on it. He to have the use of it for games played by excursionists visiting the park.

Arthur Norrington's new ice cream parlor opened yesterday. Though the weather was cold the parlor was crowded. Good music was played by the Milton Orchestra.

For sale. A large siche gas machine (used only three evenings) and two thousand feet of pipe—all suitable for farm, house and outbuildings. Price about one-third of cost. Apply to T.C. Livingston, Milton.

Messrs. R.M. Dowling and Wm. Maddocks have gone into partnership as Dowling & Maddocks, and have secured the old foundry building, last occupied by Chas. Bundy, where they will do general blacksmithing. Special attention paid to lame and interfering horses, road, truck and carriage horses.

Morgan Crewson says he has not given up hope for a good oil strike here, as so far the drilling has been done in a haphazard way, not in spots located by the use of the divining rod. He got a fresh supply of oil land leases on Monday and may be expected to use the rod with which he is an expert.

This material is assembled on behalf of the Milton Historical Society by Jim Dills, who can be reached through the society at (905) 875-4156.

Discover Country Heritage Park

FARM FUN FOR KIDS • JULY 4 & 5, 12-5PM

KIDS COUNTRY • JULY 11 & 12, 12-5PM

ALL COLOUR ANTIQUE TRACTOR & TOY SHOW
GATHERING OF THE ORANGE SHOW & INTERNATIONAL COCKSHUTT CLUB SHOW

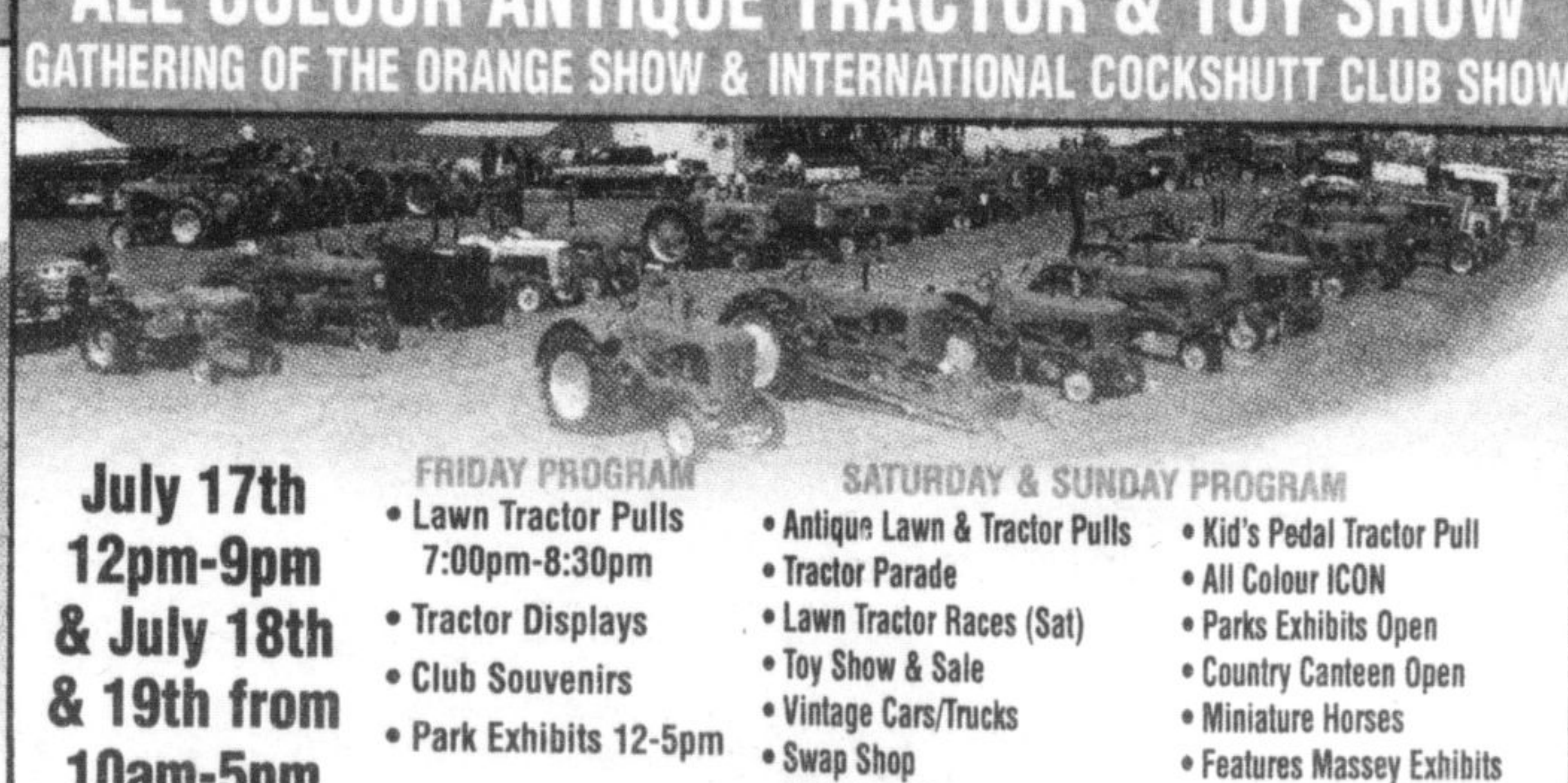


- Miniature Horses
- Tractor Drawn Wagen Rides
- Ride the Farm Animal Train
- Ride the Saw Horse Animals
- Bean Bag Pitching
- Pedal Tricycles
- Heritage Homes
- Heritage School House
- Country Canteen Open
- Kids Scavenger Hunt & Prizes



Features Pedal
Harness Horses
for Kids & Adults

- Pedal Tricycles
- Heritage Homes
- Heritage School House
- Country Canteen Open
- Kids Scavenger Hunt & Prizes



July 17th
12pm-9pm
& July 18th
& 19th from
10am-5pm

FRIDAY PROGRAM
• Lawn Tractor Pulls
7:00pm-8:30pm
• Tractor Displays
• Club Souvenirs
• Park Exhibits 12-5pm

SATURDAY & SUNDAY PROGRAM
• Antique Lawn & Tractor Pulls
• Tractor Parade
• Lawn Tractor Races (Sat)
• Toy Show & Sale
• Vintage Cars/Trucks
• Swap Shop
• Machinery Demo
• Kid's Pedal Tractor Pull
• All Colour ICON
• Parks Exhibits Open
• Country Canteen Open
• Miniature Horses
• Features Massey Exhibits
• Kids Scavenger Hunt & Prizes

Check out our website for all program updates...
www.countryheritagepark.com

8560 Tremaine Road, Milton

905-878-8151 or 1-888-307-3276

Daily admission: Adults \$7, Seniors \$6, Children \$4, Family Package: \$20 (some events differ) Programs subject to change.

Country Heritage Park is open all year for school daytrips, youth programs, corporate events, weddings, group tours & facility rentals. Call for details or email info@countryheritagepark.com.