

**#1**  
TEAM IN  
ONTARIO<sup>††</sup>

**99.51%**  
AVERAGE  
SOLD VS. ASK  
RATIO<sup>\*\*</sup>

**19.9**  
AVERAGE  
DAYS ON  
MARKET<sup>\*\*</sup>

**WAY!**  
**BETTER!**  
**AGENT!**

**PAY LESS!**  
**\$14,000**  
SAVINGS IN  
COMMISSION<sup>\*\*\*</sup>

**GET MORE!**  
**\$4,830**  
MORE IN HOME  
SALE PRICE<sup>\*\*\*</sup>

AS LOW AS  
**1%**  
TOTAL COMMISSION

IT IS NOW OFFICIAL: **#1**  
TEAM IN MILTON, GTA  
& ONTARIO FOR ALL  
COMPANIES IN '08 & '09!

# MINMAXX

REALTY INC., BROKERAGE

WHY WOULD YOU LIST  
ANYWHERE ELSE?

**416 264-1111**



CALL TODAY FOR A FREE HOME EVALUATION



**minmaxx.com**

VISIT OUR WEBSITE FOR MORE LISTINGS

★ **GTA'S MOST PRODUCTIVE  
REAL ESTATE COMPANY  
IN 2007, 2008 & Q1 2009<sup>††</sup>**

★ **†† OVER 50 TRANSACTIONS  
PER ACTIVE AGENT IN '08**

★ **†† OVER 250 LISTINGS SOLD  
BY OUR TOP AGENT IN 08**

HIRE THE  
**#1**  
THE REAL  
AS LOW AS  
**1%**  
TEAM  
IN ONTARIO<sup>††</sup>  
FOR  
**BEST OF  
BOTH!**  
WORLDS.  
**TOTAL  
COMMISSION**



Milton Mayor Presents MINMAXX with Prestigious Awards of #1 Team in Ontario For All Companies Based on # of Listings Sold in '08 & Q1 '09 & Azim Rizvee with #1 Agent in Ontario For All Companies Based on # of Listings Sold in '08 & Q1 '09.

★ **MLS LISTING** ★ **OPEN HOUSES** ★ **STAGING ADVICE**  
★ **NEWSPAPER ADS** ★ **DEDICATED AGENT**  
★ **VIVID PHOTOGRAPHY** ★ **APPOINTMENT BOOKINGS**  
★ **COLOURFUL FEATURE SHEETS & MORE! ALL INCLUSIVE!**

**REAL  
FULL  
SERVICE!**

**HAWTHORNE  
VILLAGE**

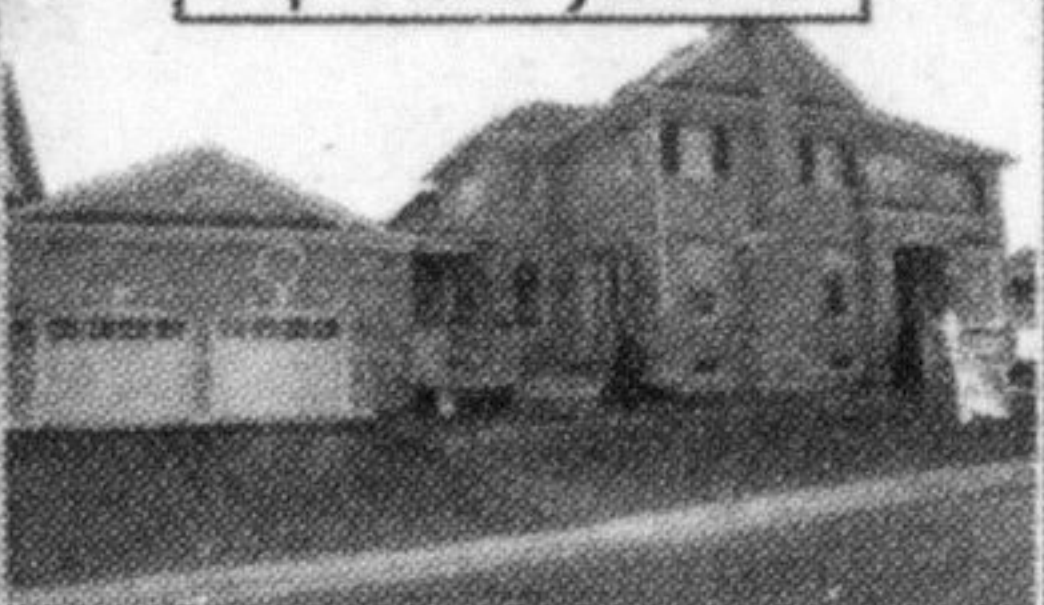
**\$379,999**



**851 Bessy Trail**  
One of the most desirable models & loc. in Hawthorne Village, Mattamy-built 'Quincy Corner' loc. on a quiet & child-safe street, bright & spacious, walk to area amenities & parks!

**MILTON  
TRAILS**

**\$459,900**



**249 Weston Dr**  
This One Is An Absolute Show Stopper In Milton Trails! Fully Loaded W/Extras, Largest Wood Trims & Baseboards Throughout, Oak Hardwood Flooring.

**HAWTHORNE  
ON ESCARPMENT**

**\$389,899**



**211 Dymott Ave**  
Absolutely stunning! Rare opportunity to buy brand new 'Royal Fern' model \*Energy Star\* home built by Mattamy in most desirable Hawthorne Village On Escarpment.

**HEATHWOOD  
TRADITIONS**

**\$549,899**



**227 Huntingford Gate**  
Fantastic home at the foot of Niagara escarpment boasting 3279 sqft. (Somerset Model). 71 sqft finished in lower level. 9 ft main lvl ceilings, 8 ft doors, decorative columns & more.

**OTHER  
COMMUNITIES**

**\$489,900**



**1001 Vickerman Way**  
Very spacious over 3000 sqft Sundial Built family home situated on a large & deep corner lot. Fantastic flr plan feat lrg principle rms, sep din rm & main flr laundry.

**OTHER  
COMMUNITIES**

**\$329,899**



**139 Lavery Hts**  
Show stopper! Rare opportunity to buy Greenpark's pop 'Millview 2' model located in most desirable Milton Trails -1800 sqft, fully loaded w/extras & upgrds, hw flrs in lr, fr & hall.

**OTHER  
CITIES**

**\$494,999**



**2174 Heaton Rd**  
This well planned five year old custom design blt by new Horizon Homes incorporates extremely well the traditional & modern open concept on the ground flr. Loaded w/upgrades.

**\$1,450/mo**



**FOR LEASE**  
**901 Hepburn Rd**  
Absolutely amazing, popular Southbury model in Mattamy's most desirable & newest phase of Hawthorne Village, ~2000 sqft. Loaded w/extras & upgrds, walk to schools & much more.

**\$419,899**



**388 Scott Blvd**  
Absolutely stunning! spectacular Arista-built almost new home in most desirable Milton Trails Community, extra wide premium lot, thousands spent on upgrds. 9 ft ceiling on main flr.

**\$349,900**



**710 Speyer Circle**  
Absolute show stopper! Biggest 1987 sqft 'Southbury' model in Mattamy's Most desirable Hawthorne Village on Escarpment, \*Energy Star\* pkg Up to 40% energy cost savings.

**\$309,899**



**8 Whitmer St**  
Rare opportunity to buy a brand new freehold townhouse in the elite Heathwood Traditions Community! Nestled at the foot of Niagara Escarpment! High-end interior upgrades.

**\$324,900**



**1268 Costigan Rd**  
Almost new luxury TH w/lots of space (1946 sf), prem lot front onto park & nestled in Parkland Community, walking distance to school & Go bus transit. Loaded w/upgrades & extras.

**\$309,500**



**450 Woodward Ave**  
Absolutely stunning!!! Victorian style custom built home on ~1/4 acre lot. Great location & lot. Large living room & dining room addition tastefully done. Very large yard.

**\$274,900**



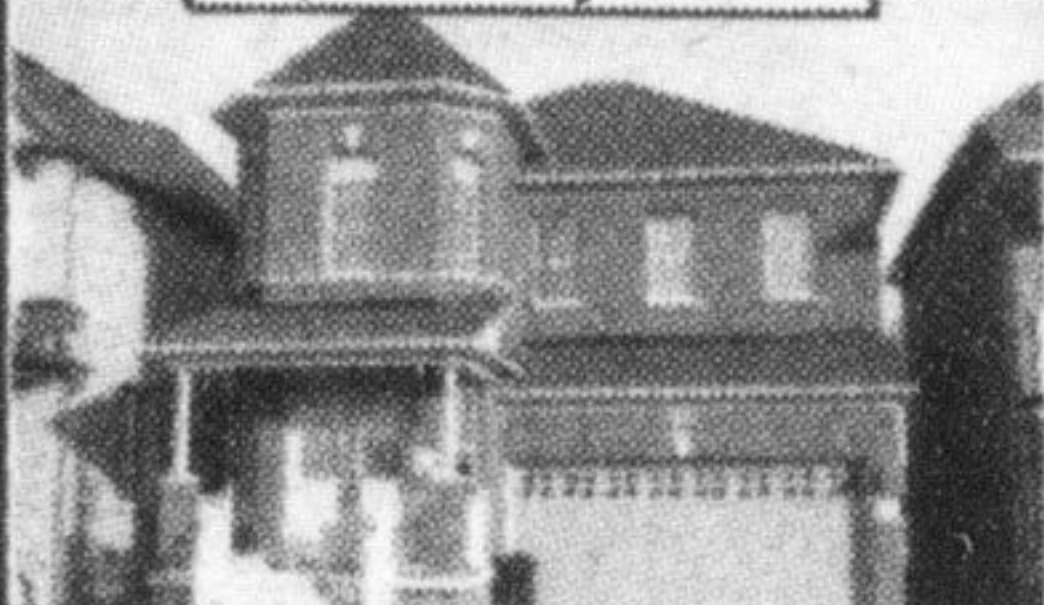
**581 Dundas St W**  
Absolutely stunning upgrd suite in 'High Park Village' 2 bdrm+den, loft-style condo, townhome! Lake Ontario views! Rooftop terrace! Warm inviting decor! Open floor Plan!

**\$1,300/mo**



**FOR LEASE**  
**1018 Barclay Circle**  
Fabulous Mattamy built 'Lakepoint' model in most desirable Hawthorne Village. 3 bedroom, 2.5 washroom open concept layout with burber carpet in great room.

**\$409,899**



**206 McCready Dr**  
Absolutely Stunning! Almost New Fieldgate Homes Build 'Cambridge' Model In Milton Trails! Premium Lot Across The Park. Loaded W/Extras, 9' Ceilings On The Main Floor.

**\$319,899**



**601 Savoline Blvd**  
Absolutely stunning 'Gilmour' model in most desirable Hawthorne Village on Escarpment.

**\$284,900**



**646 Willmott Cres**  
Absolutely stunning value & loc. for a townhouse in Milton. Country Homes-built popular 'Maple' model end unit townhouse! Over 1800 sqft. Lots of upgrds & extras!

**\$1,450/mo**



**65 John St**  
Large Lot Located In Mature Section Of Milton. Build Your Dream Home On This Fabulous Large Lot. Current Survey (2007) Is Available. Possible Severance.

**\$264,900**

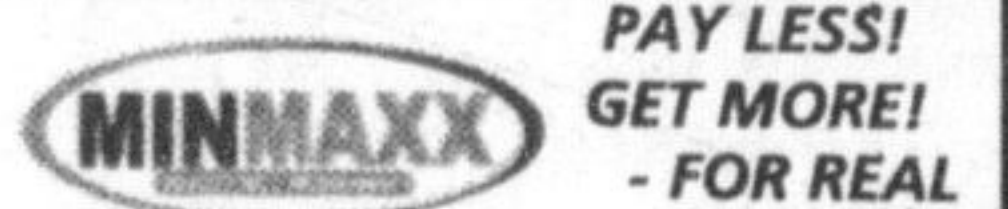


**261 Dymott Ave**  
Absolutely stunning! Mattamy 'Castlegate' corner freehold townhome w/panoramic views of Niagara Escarpment. 3 bdrms, laundry rm on main flr, huge deck off ktn, main flr family rm.



**2064 Lakeshore Rd W**  
Great opportunity for first timer buyers. Stop paying rent & move-in to this totally renovated unit. Upgraded windows, kitchen cabinetry with granite counter tops & much more.

Not intended to Solicit Buyers or Sellers currently under contract with another Brokerage. © 2009 All Rights Reserved MinMaxx Realty Inc., Brokerage. † Based on MinMaxx Broker of Record's highest number of listings sold January 2008 - March 2009. \*If listed and sold by listing agent except competition. \*\*Based on units listed & sold by MinMaxx Realty Inc. from January - December 2008. Statistics source: Independent Source. Based on TREB Statistics. \*\*\* Based on 1% vs. 5% on a 383K home. \*\*\*\* Based on sold vs. ask price difference from average GTA Realtor in '08! Sold vs. Ask ratio. † Sold vs. Ask Ratio



PAY LESS!  
GET MORE!  
FOR REAL