



RE/MAX REAL ESTATE CENTRE

INC., BROKERAGE

22 Ontario St. S.,
Milton, ON
878-7777

SRE • CANADIAN CHAMPION Wednesday, July 1, 2009

Darryl FLOWERS

Broker

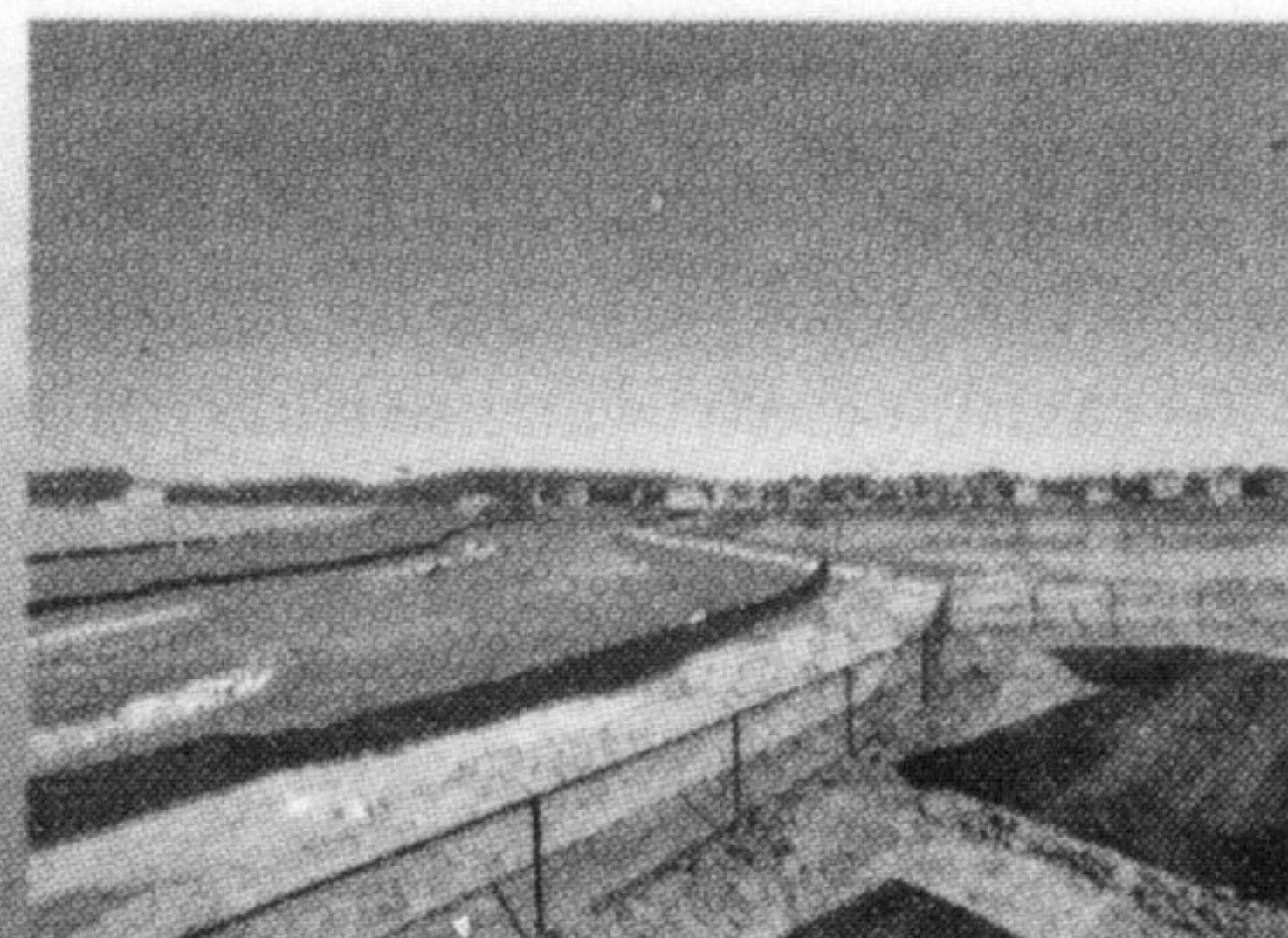
"PLANTING ROOTS IN
THE COMMUNITY"

Direct 647-407-5061
flowers@remaxcentre.ca



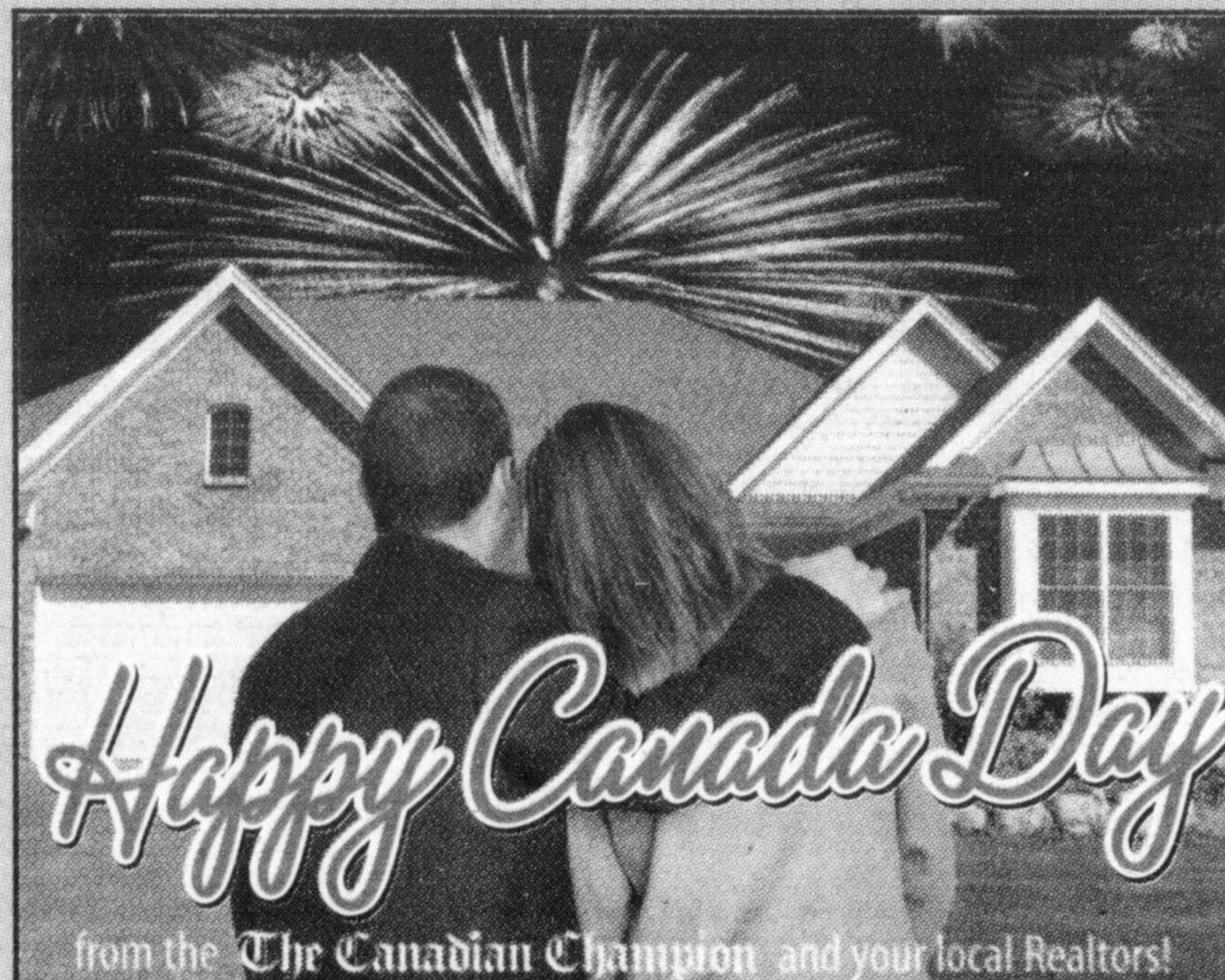
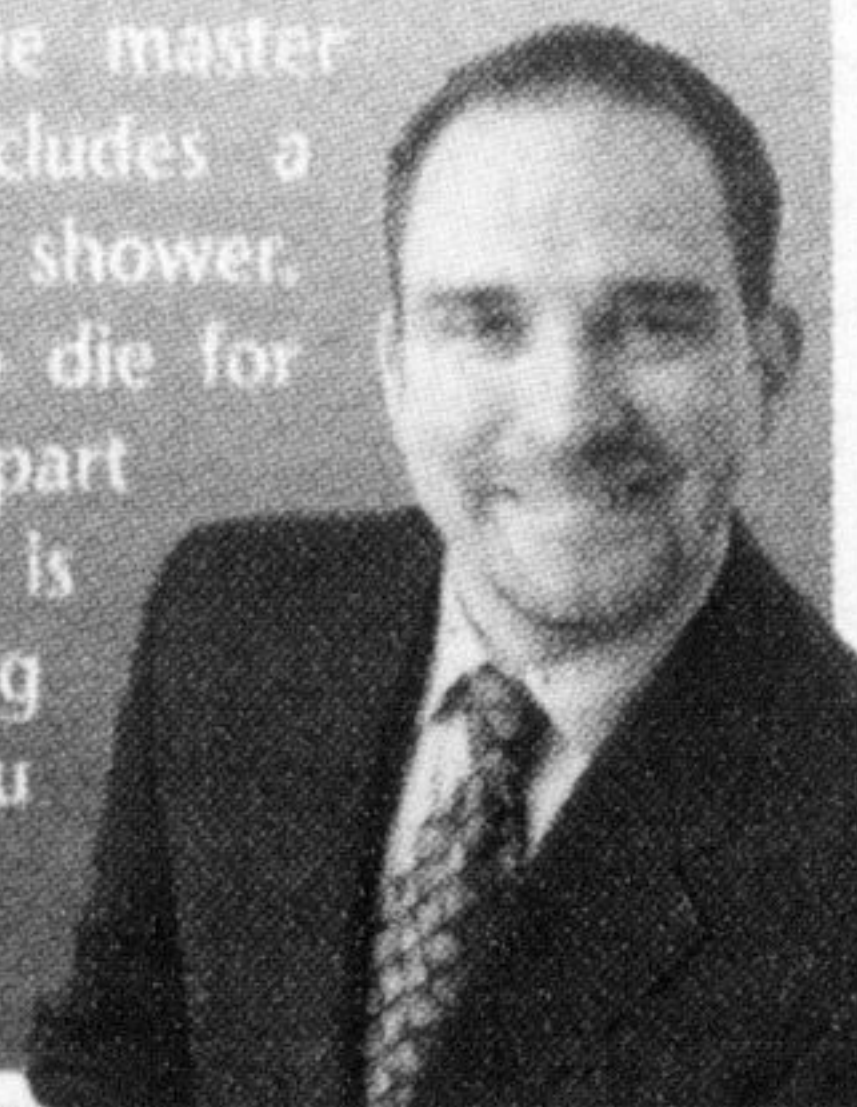
Greenpark Gem

This 1585 sqft townhouse located in Burlington has everything. Beautifully landscaped yard with an extra large patio 3 bedrooms open concept main floor with a large eat-in kitchen. Upstairs the master bedroom has a walk in closet and ensuite with a soaker tub. The best part about this home is that it is located directly across from a park. At this price what more can you ask for! \$304,900.



Stunning View!

This 2900 sqft home has 4 bedrooms and has been upgraded all over. Fall in love with the master ensuite that includes a seamless glass shower. The layout is to die for and the best part about the home is the view! Backing onto a ravine you get views of both a pond and the escarpment making the back yard perfect for solitude and entertaining. \$579,000.



Happy Canada Day

from the The Canadian Champion and your local Realtors!



Carol Brooks,
Sales Representative

Will Provide you with...
PERSONAL & KNOWLEDGEABLE SERVICE
WHEN
BUYING OR SELLING A HOME IN MILTON & SURROUNDING RURAL AREAS

905-878-7777
www.carolbrooks.ca



SCHOOLS OUT!



NEW PRICE

STONE SCHOOLHOUSE CAMPBELLVILLE

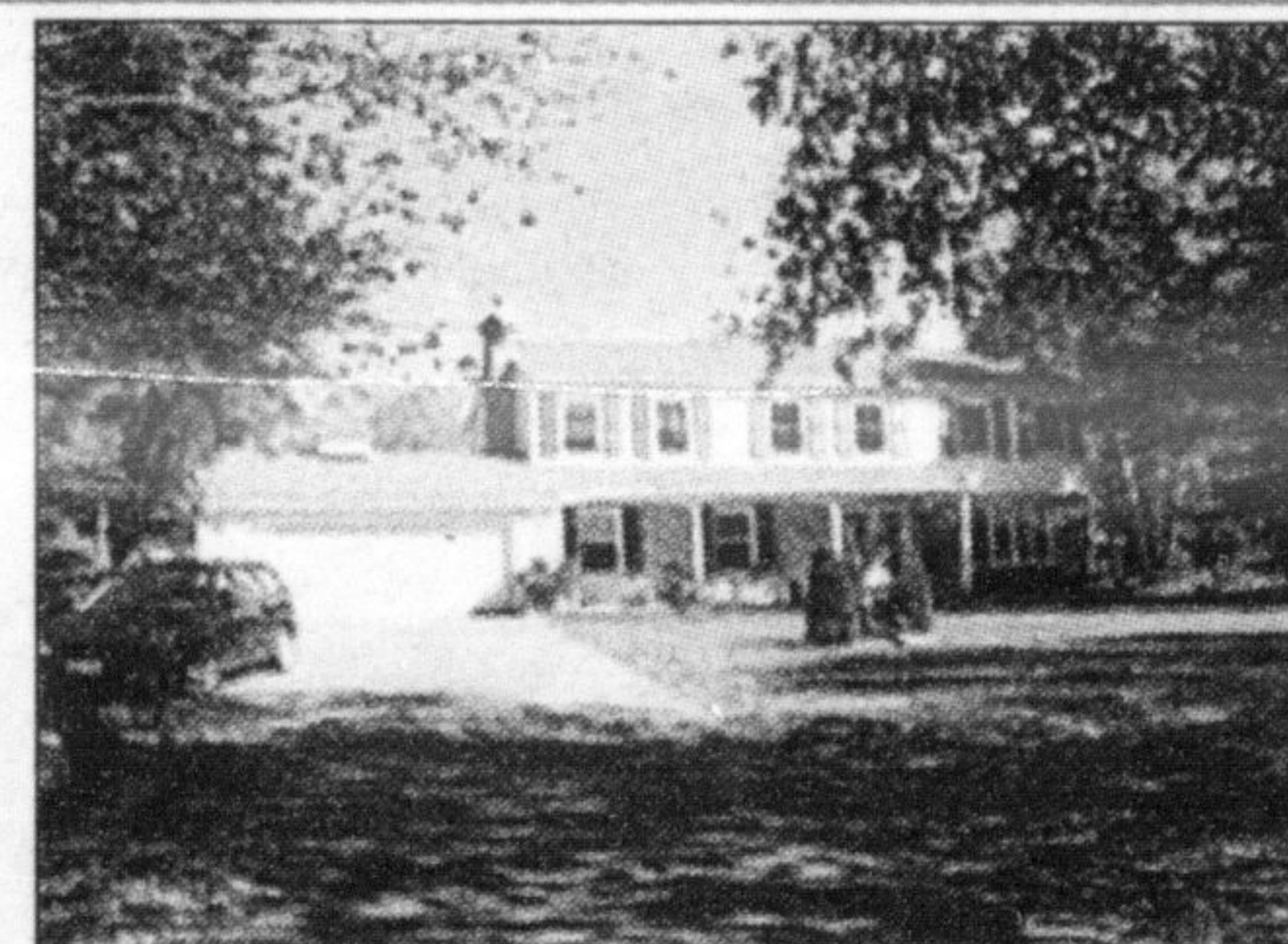
One of a kind (circa 1860) beautifully upgraded and improved with unique open concept floor plan...entertainers delight! Bright sunroom addition over looking perennial gardens & lovely country side views. Office/den complete with high-speed. Upper level dormers allowing lots of natural light and expanded 2nd level. 3 bdrms, includes spacious master complete with ensuite & fireplace. An oversize separate garage doubles as a workshop with 220amps. Must be viewed to fully appreciate this unique home. \$649,999.



NEW LISTING

ATTRACTIVE ALL BRICK 4 BEDROOM

A Mattamy home (Pilgrim model) with large kitchen and eat at breakfast island, open concept family room with stone fireplace. Main level has ceramics & hardwood floors. Separate living room and combined dining room. Freshly painted throughout. Great size master bedroom with ensuite. Finished lower level rec room. Rear yard is completely fenced. \$369,000.



LARGE CUSTOM BUILT HOME

1 acre tucked well off Guelph Line. 5 bdrms w/main flr family rm, eat-in kitchen, sep. dining & living rms, 2 fireplaces, 3 baths, main flr laundry & mud rm. Oversized 2 car garage, in-ground pool, fenced yard & paved parking. Walk to Brookville P.S. & park & easy access to major hwy's, golf courses & hiking trails. \$579,000.



NEW PRICE

VILLAGE SETTING CAMPBELLVILLE

Charming 3 bedroom vintage home located on a very deep lot and within walking distance to village amenities. This charming 1 1/2 storey home has had numerous improvements and upgrades over the past few years and features high ceilings, millwork and other great features consistent with a home of this era. The kitchen complete with built in appliances has been designed for efficiency. A wood burning fireplace insert located in the living room affords a cozy atmosphere and the spacious separate dining room will accommodate large furniture. A bright sunroom addition leads to a pretty rear garden full of perennials, large deck, garden shed and an in-ground pool. \$358,000.

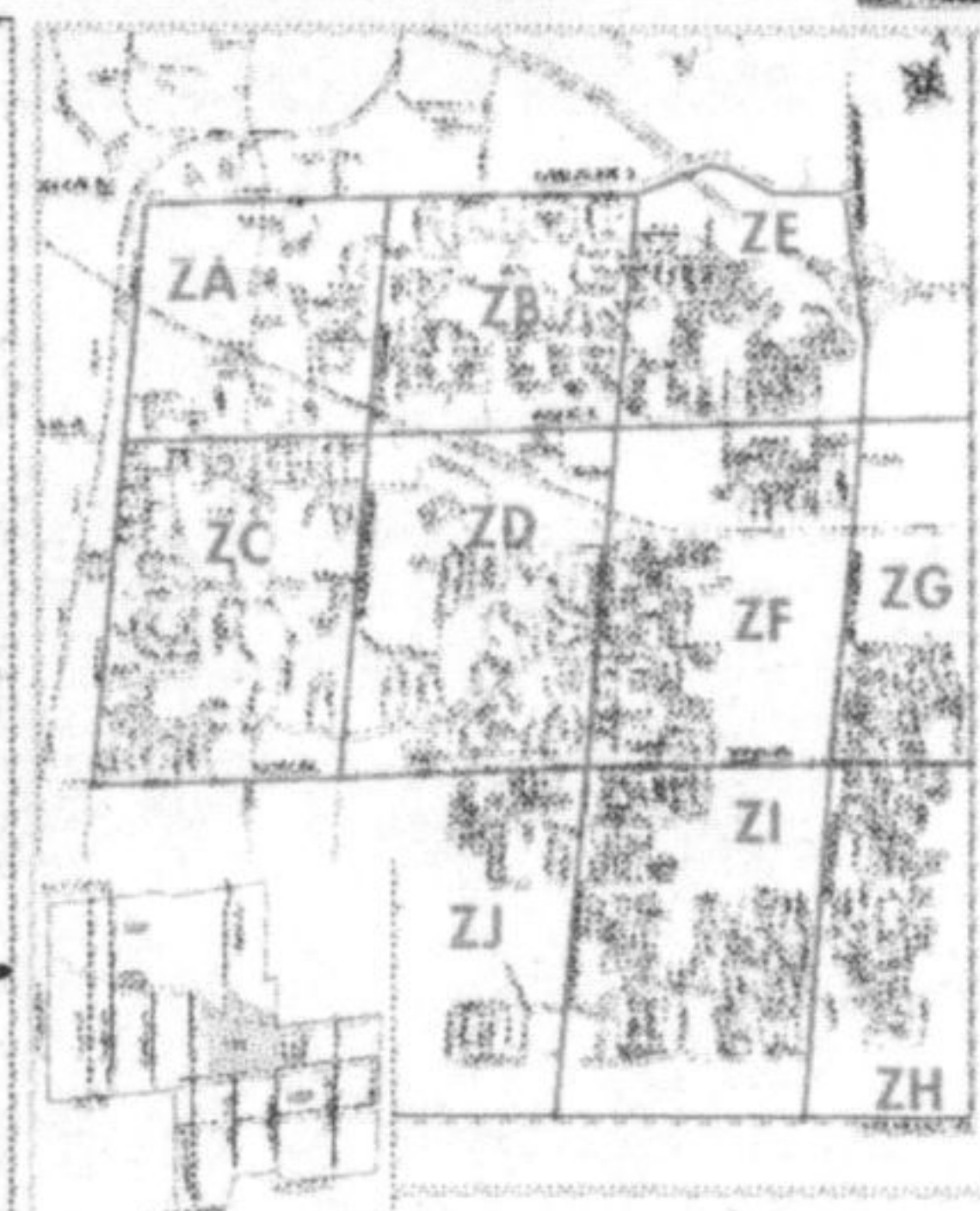
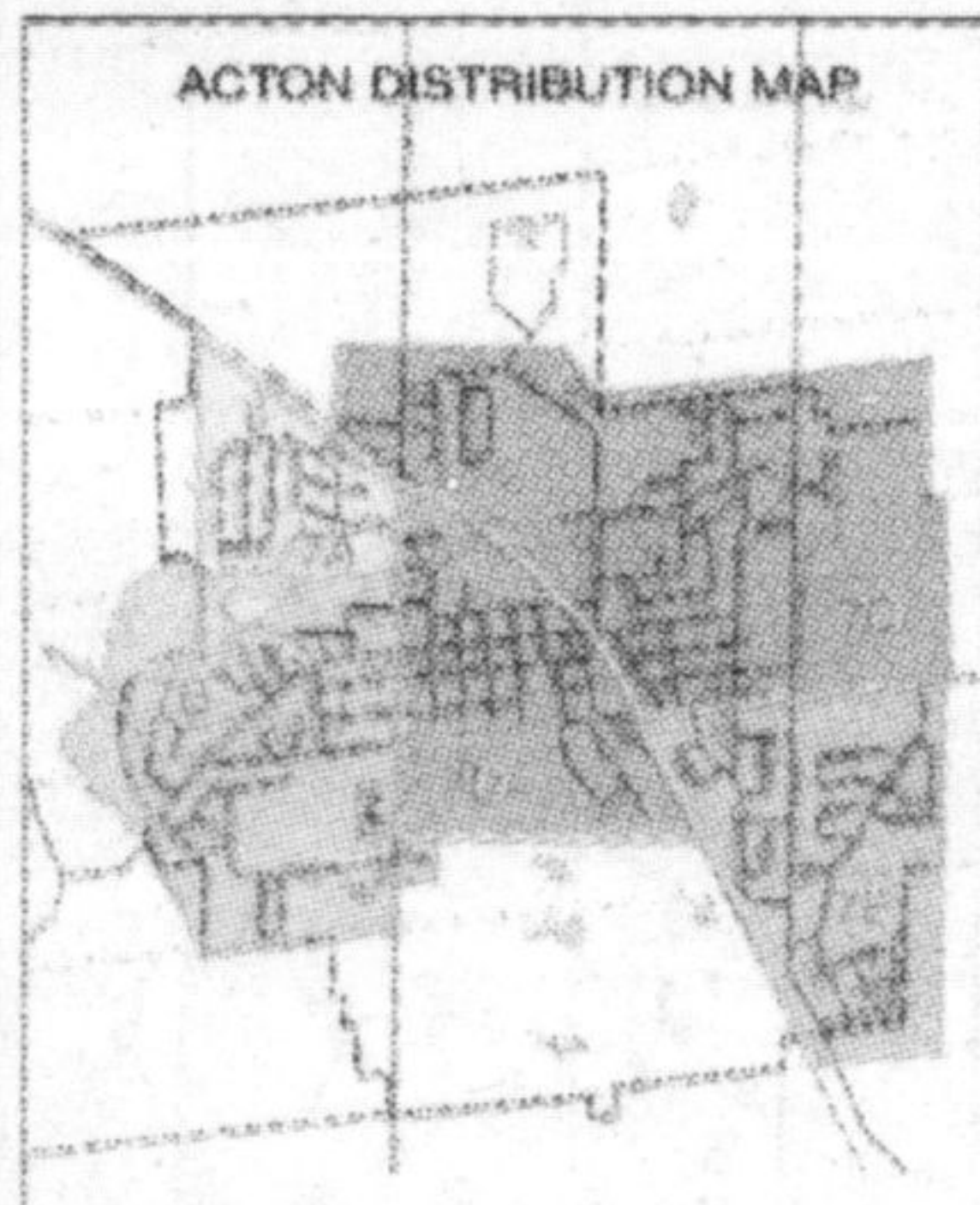
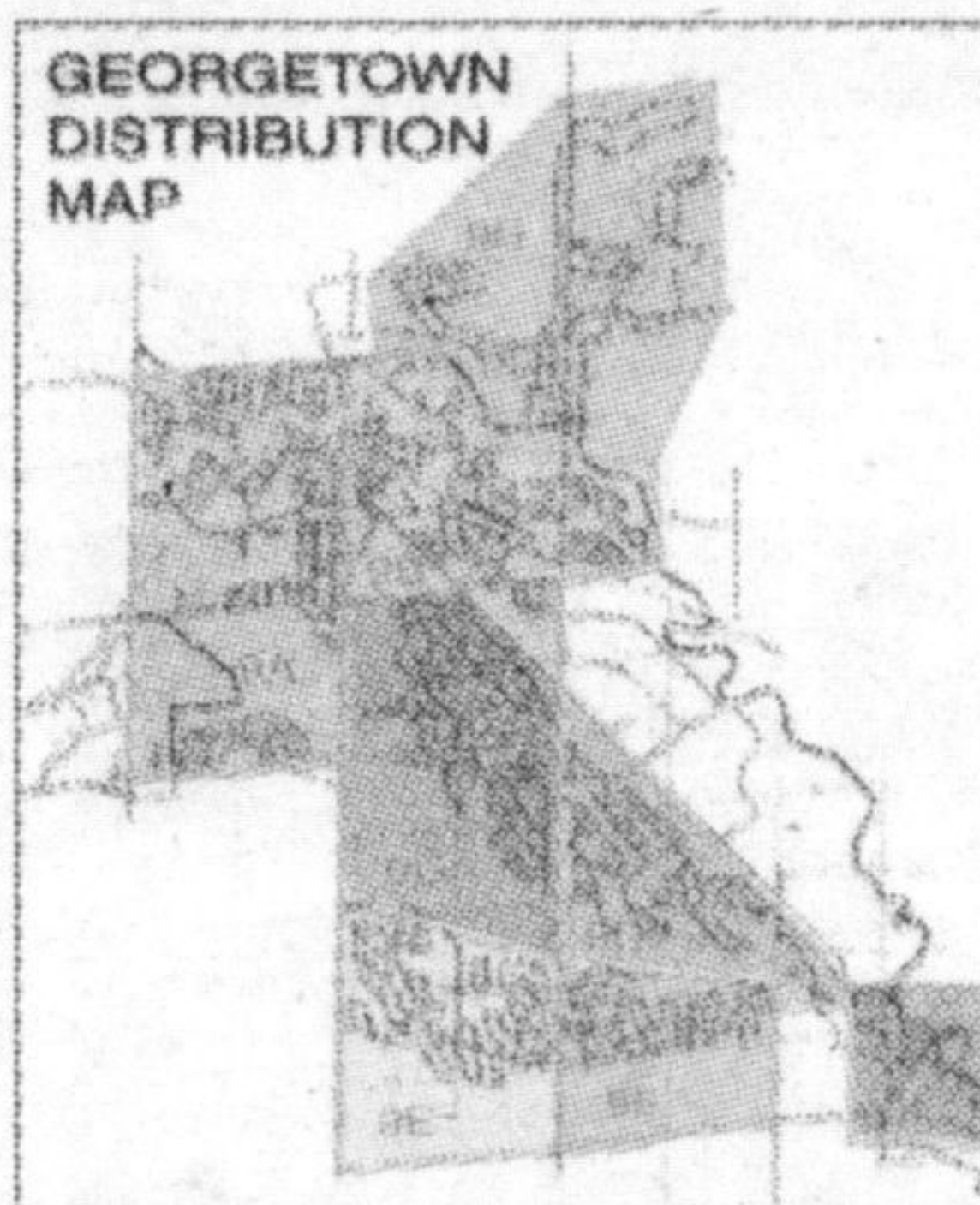
* SALES REPRESENTATIVE ** BROKER

Milton, Campbellville, Hornby, Georgetown, Acton, Limehouse, Norval, Terra Cotta, Ballinafad, Rurals North of Huttonville, Erin RR#2

plus Mississauga!

Your COUNTRY Reach

Delivered to
51,500 or 251,500
homes per week!
You Decide!



You Decide!

Country Reach Single \$99 to 51,500 homes
Mississauga plus \$99 to 200,000 homes
\$198 for combined reach of 251,500 homes!

Before you spend your HARD EARNED ADVERTISING DOLLARS, you should know the answers to the following questions...

The 5 "W's"

- WHO...** is producing your advertising vehicle? Do they have the expertise? Proven readership? Are their rates realistic and sustainable over time?
- WHAT...** does the medium look like? Is it substantial? Quality? A good-looking product that will make people read it before tossing in the blue box?
- WHEN...** will the product be delivered? Has it proven to be delivered on time and when scheduled?
- WHERE...** will the product be delivered? Do you know which postal areas or FSAs it's supposed to go to? Is it guaranteed and officially audited to prove it reaches all the households promised?
- Why...** would you advertise with without the answers to the above questions?

Metroland's Community of Newspapers believe we have the answers you seek...

- Who...** Metroland's Community of Newspapers have consistently delivered proven, audited* readership results
 - What...** We have produced award winning** newspapers, honoured for excellence in community coverage and service, design, readability and results.
 - When...** Delivery guaranteed and audited*** circulation, going where we say it's going and when... Twice weekly!
 - Where...** We are the only publication guaranteeing blanket coverage of your markets.
- Ever alert to changing market forces and needs, we have expanded our reach to stretch your branding exposure from Milton in the south, to Campbellville, Hornby, Georgetown, Acton, Limehouse, Norval, Terra Cotta, Ballinafad, Rurals North of Huttonville, Erin RR#2, plus Mississauga for one LOW, AFFORDABLE price!
- WHY...** would you put your advertising dollars with anyone but a proven performer... **Metroland's Community of Newspapers.**

Call Diane Wolstenholme 905-878-2341 x 212
email dianew@miltoncanadianchampion.com

* Kubas Readership Study 2008
** Ontario Community Newspaper Association, Suburban Newspapers of America
*** Canadian Circulation Audit Bureau

