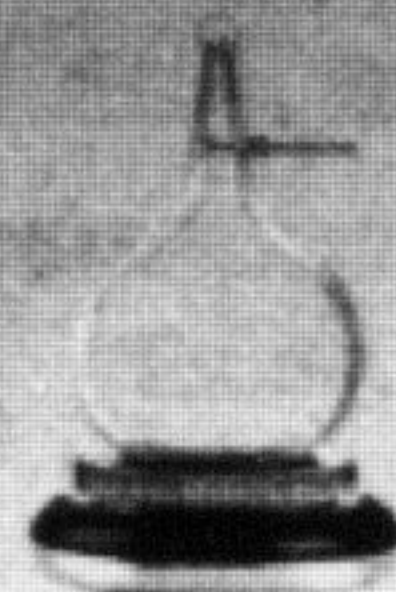
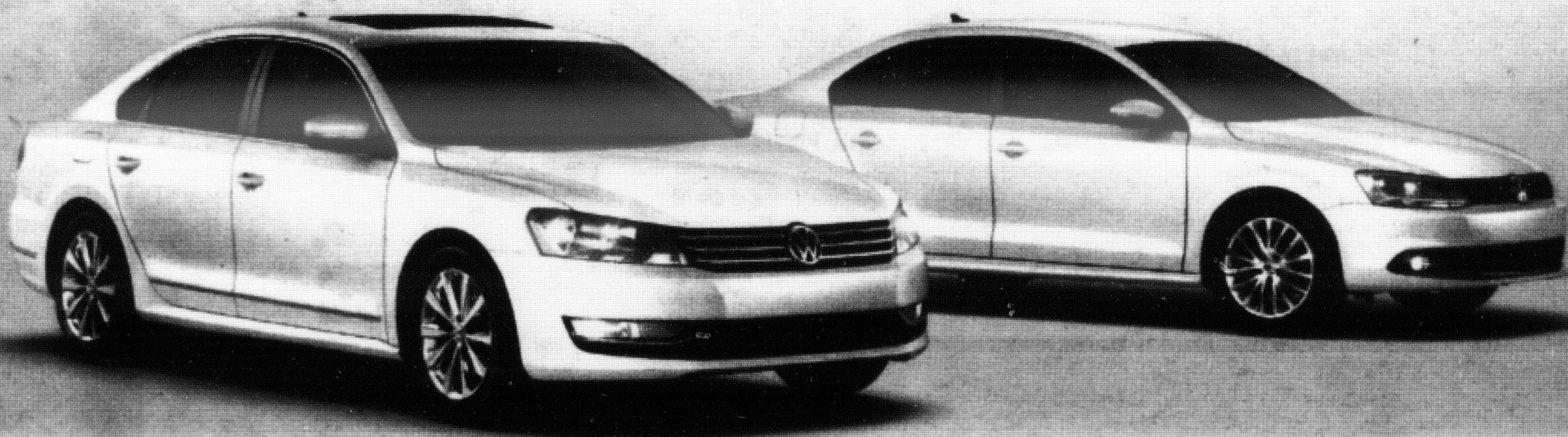


Autobahn for All Sales Event

German engineering. From only \$17,773.*

\$0 FIRST MONTH'S PAYMENT
ON OUR MOST POPULAR 2012 MODELS†



2012 Motor Trend
Car of the Year®
2012 Passat



Insurance Institute
for Highway Safety
Top Safety Pick
2012 Passat

The All-New 2012 Passat

Lease from only
\$299 per month
for 48 months

4.9% APR**

Or purchase from only \$25,969+HST*
With air conditioning

2012 Jetta Trendline+

Lease from only
\$189 per month
for 48 months

3.9% APR**

Or purchase from only \$19,269+HST*
With air conditioning



Up to \$750 Rebate
for qualified college
& university grads.

No-charge Roadside Assistance†
4-year, unlimited mileage
24 hours, 365 days a year

4-year/80,000 km†
new vehicle limited warranty

Georgetown
Volkswagen
Selection

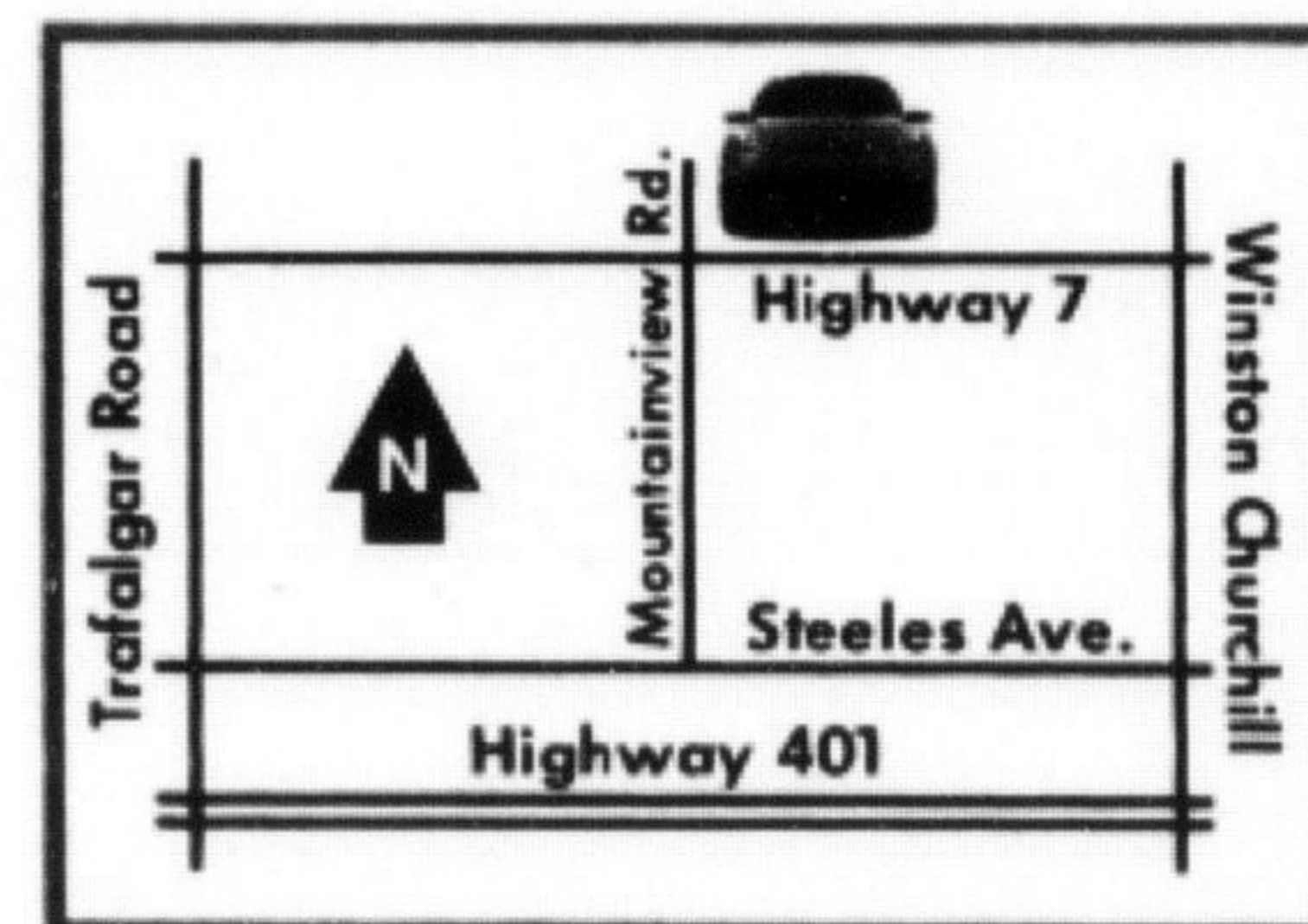
Georgetown
Volkswagen
Service



Georgetown Volkswagen

203 Guelph Street (Highway 7)
Georgetown - 905.877.5285

Check out our efficient
selection of 2011 & 2012
TDI Clean Diesel models.



Visit georgetownvw.com or call 1-866-877-5285 for more information.

*Base MSRP of new 2012 Jetta 2.0 Trendline/2012 Jetta 2.0L Trendline+/2012 Passat 2.5L with 5-spd/5-spd/5-spd manual trans. is \$17,773/\$19,269/\$25,969 including \$1,365/\$1,365/\$1,365 freight and PDI, \$29 EHF (tires), \$100 air conditioning levy, if applicable, \$5 OMVIC fee and \$495 dealer admin. fee. License, insurance, registration, options, and other applicable taxes are extra. **Limited time lease offer available through Volkswagen Finance, on approved credit, based on new 2012 Jetta 2.0L Trendline+/2012 Passat 2.5L base model with 5-spd/5-spd manual trans. \$1,365/\$1,365 freight and PDI included in monthly payment. 48-month term. \$1,462/\$1,858 down payment or equivalent trade-in, \$250/\$350 security deposit, \$29 EHF (tires), \$100 air conditioning levy, \$5 OMVIC fee, \$46 PPSA and \$495 dealer admin. fee and first monthly payment due at lease inception. Total lease obligation: \$10,534/\$16,210. 64,000 kilometre allowance; charge of \$0.15/km for excess kilometres. License, insurance, registration, options, and other applicable taxes are extra. †First monthly payment of \$0 available on a 48-month lease through Volkswagen Credit (V.C.) of select new and unregistered 2012 Jetta/Passat models (TDI Clean Diesel models excluded) up to a maximum of \$400/\$500 (excluding taxes). Offers end Nov. 30, 2011, and are subject to change or cancellation without notice. ‡Up to \$750 rebate for recent college or university graduates. †Roadside Assistance is provided by Professional Dispatch Group. †Whichever occurs first. Visit Georgetown Volkswagen for full details, great coffee and lots of fun.