

Students help needy families by donating tons of food, clothing

Truck loads of canned items picked up from schools

It was the little school that could, and did.

Not only did the 250 students of Martin Street Public School collect twice as much food for the Salvation Army foodbank this year over last, they also donated more than 100 pairs of mitts and hats for needy families.

Students exemplified a real spirit

of sharing, said principal Robert Hamilton.

Donations were up, in part, because instead of purchasing tickets for a festive concert, parents were asked to bring a donation for the food bank, said Hamilton.

Two firetruck loads of canned items were picked up from the school Thursday morning, while

another two firetrucks and a pick-up truck were required to handle all the Christmas food drive donations from Robert Baldwin Public School this week.

For their efforts, students were allowed to spend time on the firetruck and speak with firefighters.

"It's nice to see kids that young caring about needy families at Christmas," said Lieutenant Greg Ollerenshaw of the Milton Fire Department.

Company, employees fill pick-up truck with 1,080 pounds of food

The Milton Salvation Army food bank shelves are full for the holidays, thanks in no small part to Transpro Group of Companies.

The Milton-based business has held a Christmas food drive since

relocating to town in 2007, and out-did itself this year with an overall donation of 1,080 pounds.

The donations were enough to fill the back of a pick-up truck.

The company's drivers made the

biggest contribution toward the overall tally, while employees chose to forego their usual Kris Kringle gift exchange in order to put more money toward the food drive.

Glen Eden ski slopes to open for the season on Boxing Day

Despite the slow arrival of winter weather this year the snowmaking team at Glen Eden has been working its magic on the slopes at every opportunity.

Glen Eden Ski and Snowboard Centre will open for the season on Boxing Day with three or four of their six lifts and four to five of the 14 runs open.

"We've decided to play it safe and bump back our opening just a few more days to help ensure the best conditions possible for our patrons. We have thousands of pass holders and lesson participants counting on us to make winter happen and we're doing everything possible to get things going for the school break," said Sean Durkin, area manager

at Glen Eden, which is located in Kelso Conservation Area.

It's been a challenging start for all of the ski areas in Ontario this year, said Simon Holden, Glen Eden's manager of programs and services.

"It's at times like these we are really thankful for having one of the best snowmaking teams in the business working with some of the latest technology available," he said.

"The investments we've made in snowmaking equipment over the past few years are really paying off this year."

Glen Eden is open seven days a week from 8:30 a.m. to 9:30 p.m.

PEGGY'S
DISTINCTIVE LADIES FASHIONS
THE ULTIMATE
BOXING DAY EVENT

ONE DAY ONLY
TUESDAY DECEMBER 27TH

40% OFF
STOREWIDE

NO EXCHANGES OR RETURNS TODAY!!!

ALL SALES
FINAL

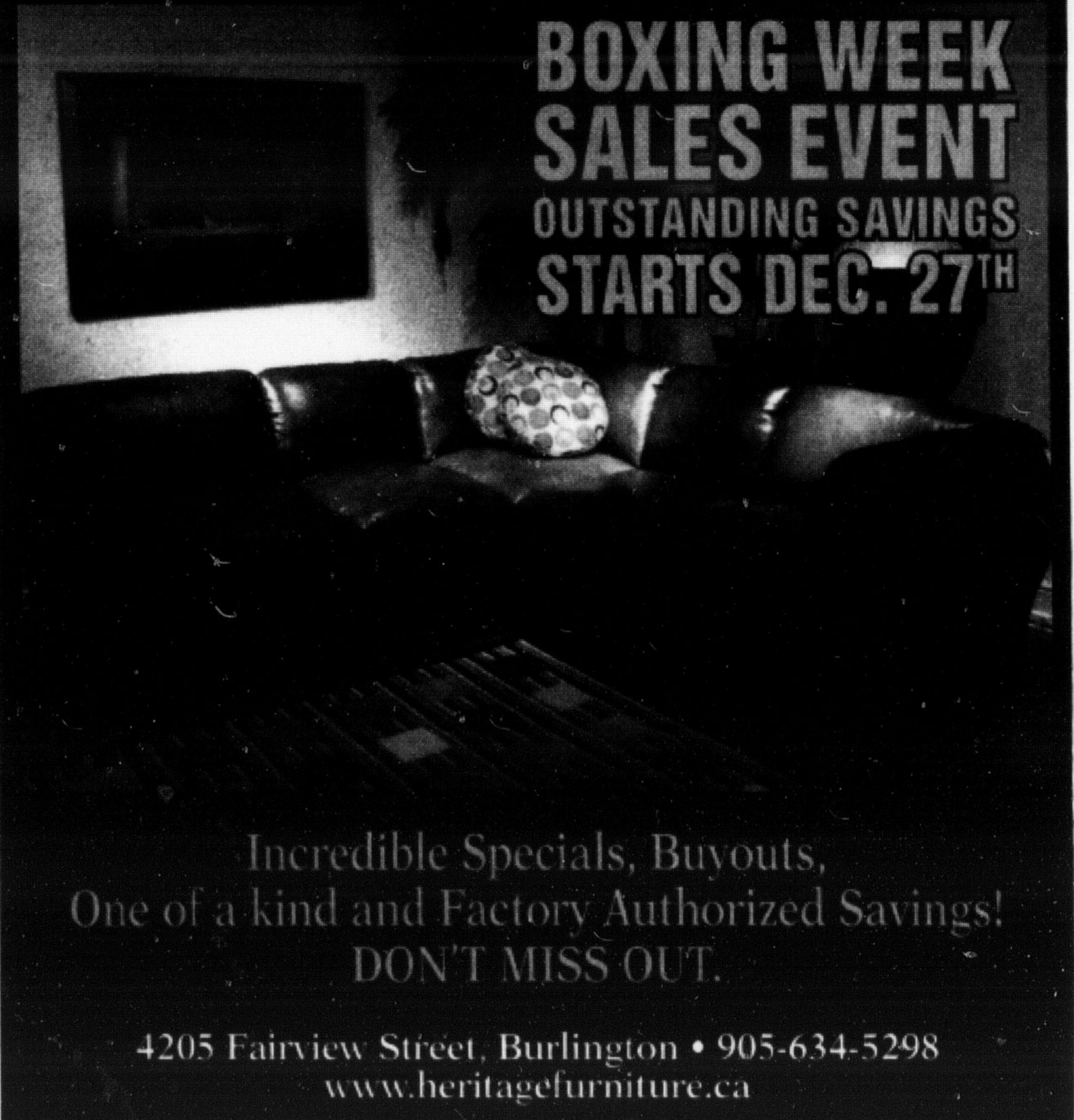
ALL SALES
FINAL

DOWNTOWN MILTON - 184 MAIN ST. E
905-878-1414

HERITAGE
SINCE 1977

Lifestyle Home Furnishings

BOXING WEEK
SALES EVENT
OUTSTANDING SAVINGS
STARTS DEC. 27TH



Incredible Specials, Buyouts,
One of a kind and Factory Authorized Savings!
DON'T MISS OUT.

4205 Fairview Street, Burlington • 905-634-5298
www.heritagefurniture.ca

BAD BOY
BOXING DAY SALE
up to **80% OFF**

SAMSUNG HD

\$397

51" PLASMA

FIRST 80 CUSTOMERS CHAINWIDE

#075540