



GARY'S SWEEPING OUT THE 2011 MODELS

2011 only 20 models left!!

2011 JEEP COMPASS



2.4L 5SPD

ONLY \$17,388⁺ plus HST & Licensing

4.99% FIXED RATE | \$0 DOWN | \$58 WEEKLY PAYMENTS (TAXES INCLUDED) 96 MTH TERM

4.99%* FIXED RATE

96 MONTH TERM (OAC) ON SELECTED 2011 MODELS

PLUS CASHBACK INCENTIVES!!

2011 JEEP PATRIOT



2.4L 5SPD

ONLY \$16,288⁺ plus HST & Licensing

4.99% FIXED RATE | \$0 DOWN | \$54 WEEKLY PAYMENTS (TAXES INCLUDED) 96 MTH TERM

2012 GRAND CARAVAN CVP 29E PKG.



Stk # K609

From \$18,995 (hst extra)

4.99%+

FINANCING UP TO 96 MONTH TERM (OAC)

2012 DODGE JOURNEY 22F PKG.



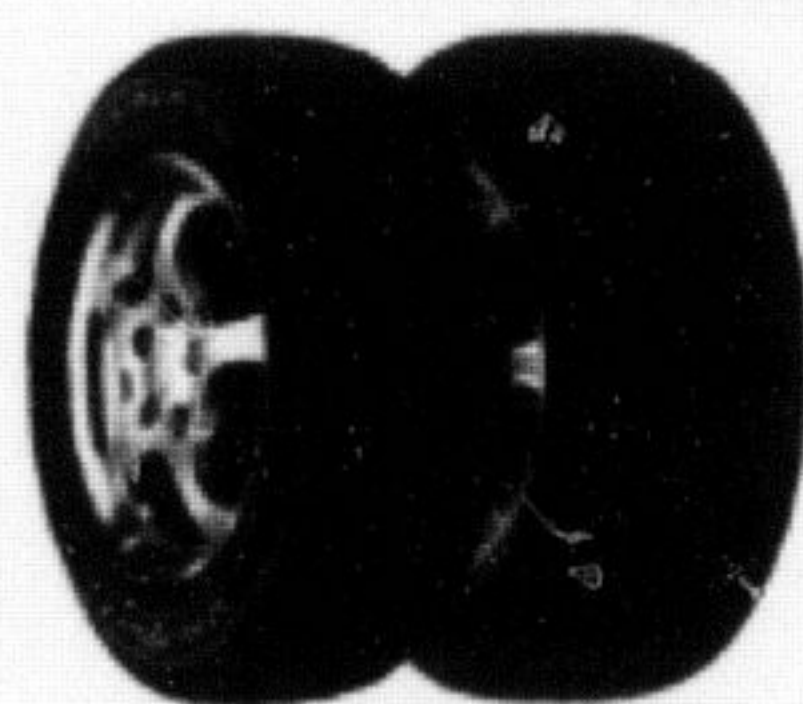
Stk # K613

EXPRESS OIL CHANGE SERVICE!

SERVICE SPECIALS

EXPRESS OIL CHANGE SERVICE!

Buy 3 Tires, Get the 4th FREE!



GENERAL TIRE
BRIDGESTONE
Firestone
MICHELIN
Continental
GOODYEAR

Must be dealer installed & excludes Tire sizes 18" and over installations & balancing extra.

Wheel Alignment

\$79.95

Regular Price \$99.95

When Combined with "Buy 3 Tires, Get the 4th Free"

- Setting Tire Pressure
- Computerize Alignment
- Toe Adjustment
- Steering and Suspension Inspection

Peace-of-Mind Maintenance Service

\$67.95

Mobil 1 Available at additional cost

Service Includes

- Up to 5l of 5W20 or 5W30 Mopar Oil
- Mopar Oil Filter • Rotation of 4 tires
- Peace-of-Mind Inspection of cooling system, all fluid levels, electronic battery test, front and rear brake systems, exhaust system and suspension system
- Written report on findings

Additional charges may be applied for diesel, V10s, HEMI V8, fluid disposal, semi-synthetic oil. Environmental handling charges may apply.

With Maint Service Save an extra **10%** on "Recommended" Repairs and Services

Cooling System Flush

\$99.95

Clean out contaminants that can be harmful to the engine

Ensures that the coolant will not freeze or lose it's integrity

Milton: (905) 876-2580 • Toll Free: 1-866-848-8816

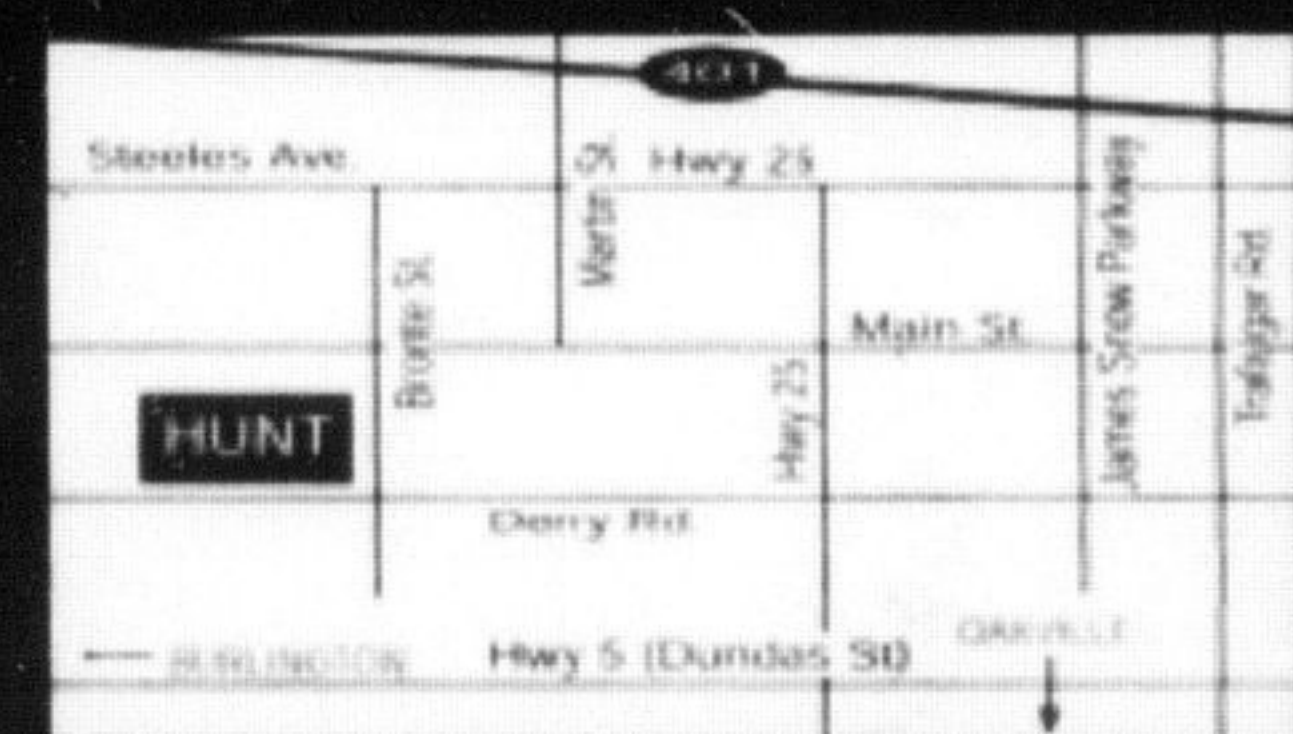
Email: sales@huntchrysler.com

Drive that extra mile! We will make you Smile!



500 BRONTE ST. S., MILTON

SALES:
Mon to Thurs. 9-9,
Fri. 9-6,
Sat. 9-5



SERVICE: Mon-Fri 8-5, Tues. 8-8, Sat. 8-12
SERVICE/PARTS: www.huntchrysler.com

*SALE PRICE INCLUDES ALL CASH BACKS, DEALER DISCOUNTS. *FINANCING \$18,513.45 COB \$3,950.55 = 22,464.00 @ 4.99% RATE OVER 96 MTH TERM FOR WEEKLY PAYMENT OF \$54.00. SUBJECT TO BANK APPROVAL.