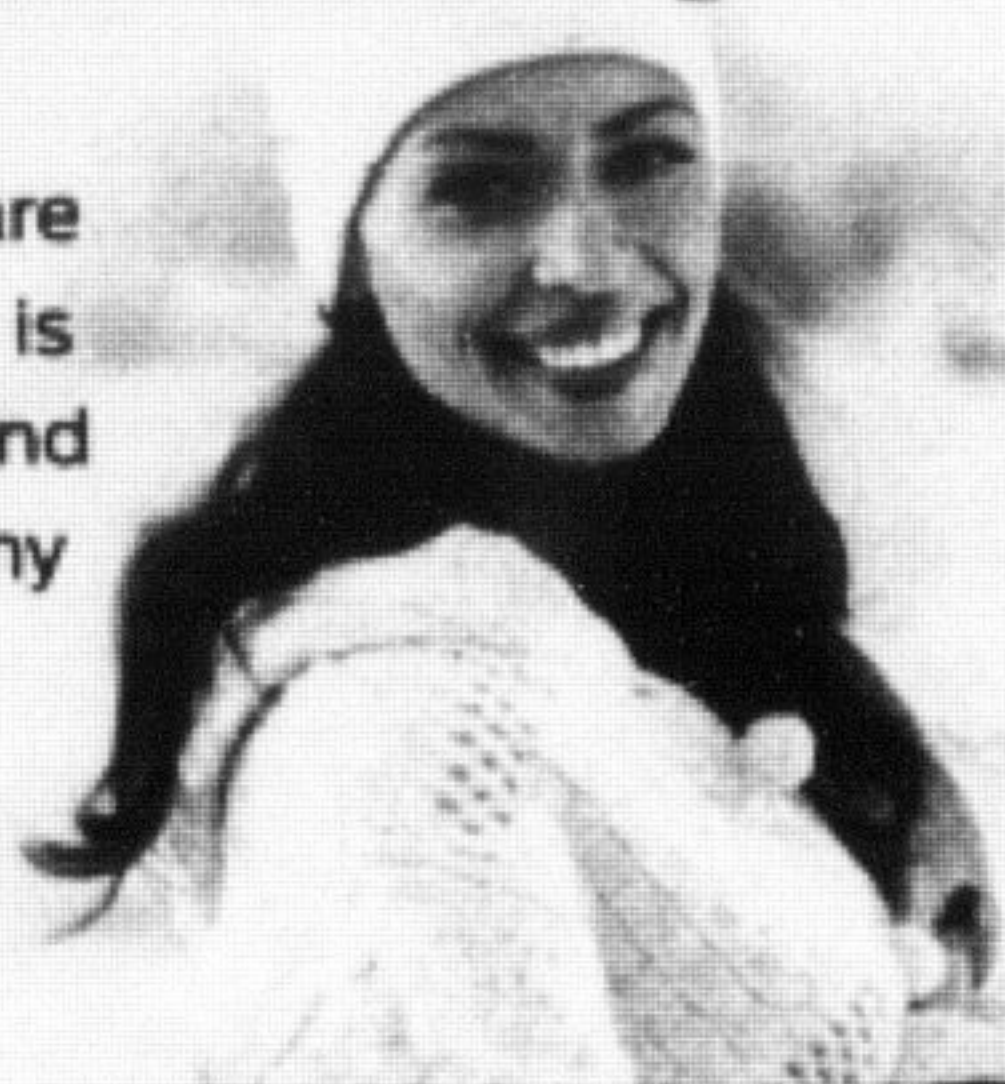


NATIONAL TIRE EVENT

Get a grip on winter driving.

“With Total Tire Care from Ford, my car is ready for winter and I didn't even get my hands dirty.”



TOTAL TIRE CARE

We won't be undersold on tires!††

Up to **\$100**

in Manufacturer Mail-In Rebates.††
See your Service Advisor for details.

Steel wheels starting from **\$59.99**
(14" steel wheel)*

OR
Upgrade to aluminum wheels.
Up to **60% OFF***

For added convenience, let us store your summer tires.**

Available at participating locations. Dealer may sell for less.

ASK ABOUT OUR WINTER SAFETY PACKAGE

Help prepare for winter with select brand name tires, wheels and tire pressure monitoring system designed by Ford for your Ford.



THE WORKS Fuel Economy Package†

Winter preparation that can save you up to \$350* a year on gas

FOR ONLY **\$59.99†**

INCLUDES UP TO 87-POINT INSPECTION, PREMIUM OIL AND FILTER CHANGE* AND TIRE ROTATION.

Motorcraft® BRAKE PADS OR SHOES With installation

Enjoy the stops along the way. Never buy another set of Motorcraft® brake pads or shoes with our lifetime warranty!†

AND RECEIVE **NO-CHARGE** Motorcraft® WIPER BLADES WITH PURCHASE.* INSTALLATION INCLUDED. \$35 RETAIL VALUE.

With Lifetime Warranty

THE DIESEL WORKS Fuel Economy Package†

Full service winter preparation for your diesel engine.

FREE BOTTLE OF "5 SHOT" ANTI-GEL & PERFORMANCE IMPROVER* WITH THIS SERVICE

SEE DEALER FOR PACKAGE PRICES.

Trust the experts who know your Ford best: Ford-Trained Technicians.
The National Tire Event ends December 14th, 2011, so visit your Ford Store or ford.ca today.



Autobahn for All Sales Event

German engineering. Now more affordable than ever.



The All-New 2012 Passat

INTRODUCTORY OFFER

\$0 FIRST MONTH'S PAYMENT†

Lease from only **\$299** per month for 48 months

4.9% APR**

Or purchase from only \$25,969*

Insurance Institute for Highway Safety Top Safety Pick 2012 Passat

Georgetown Volkswagen

203 Guelph St.
905.877.5285



*Base MSRP of new 2012 Passat 2.5L with 5-spd manual trans. is \$25,969 including \$1,365 freight and PDI, \$29 EHF (tires), \$100 air conditioning levy, \$5 OMVIC fee and \$495 dealer admin. fee. License, insurance, registration, options, and other applicable taxes are extra.
**Limited time lease offer available through Volkswagen Finance, on approved credit, based on new 2012 Passat 2.5L base model with 5-spd manual trans. \$1,365 freight and PDI included in monthly payment. 48-month term. \$1,858 down payment or equivalent trade-in. \$350 security deposit, \$29 EHF (tires), \$100 air conditioning levy, \$5 OMVIC fee, \$46 PPSA and \$495 dealer admin. fee and first monthly payment due at lease inception. Total lease obligation: \$16,210. 64,000 kilometers allowance; charge of \$0.15/km for excess kilometers. License, insurance, registration, options, and other applicable taxes are extra. †First monthly payment of \$0 available on a 48-month lease through Volkswagen Finance, on approved credit of select new Passat models (TDI Clean Diesel models excluded) up to a maximum of \$500 (excluding taxes). Offers end Nov. 30, 2011, and are subject to change of cancellation without notice. Visit Georgetown Volkswagen for full details, great coffee and tons-o-fun. After all, we're drivers too.