

**ROYAL LEPAGE**  
Meadowtowne Realty, Brokerage  
Independently Owned and Operated



**ROYAL LEPAGE**  
**MEADOWTOWNE REALTY**

**905-878-8101**  
475 MAIN ST. E., MILTON  
www.meadowtowne.com

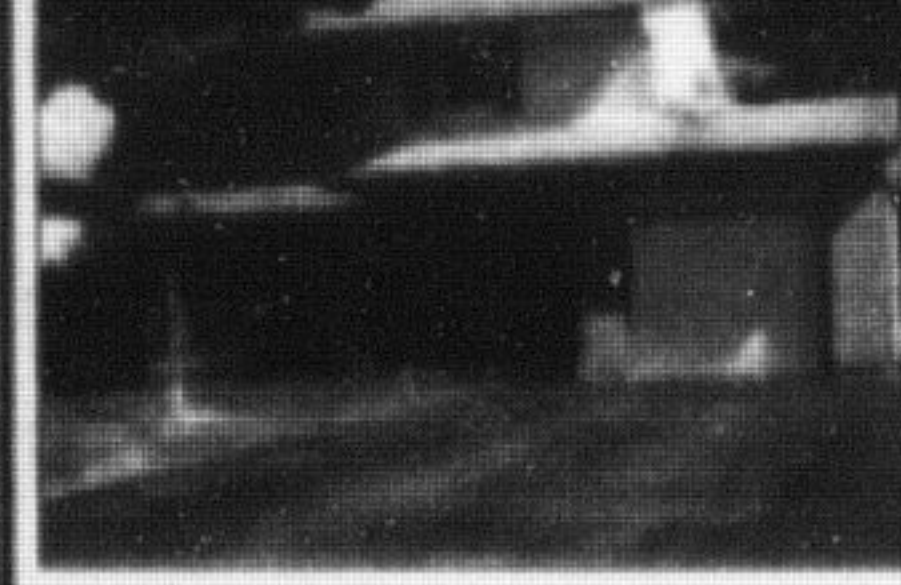


**Angela Silcock**  
Sales Rep.

905-878-8101



**ROYAL LEPAGE**  
Meadowtowne Realty, Brokerage  
Independently Owned and Operated



**GOOD FAMILY NEIGHBOURHOOD**

Lovely 4 BDRM home in Lakeview area of Acton. New high eff furnace & air. All windows & roof done. Large fully fenced lot.

w/IG pool & grassy area separately fenced. Hrdwd flrs throughout. Gas FP in rec room. **\$359,900.**



**WHY PAY RENT?**

Spacious 3 Bdrm townhouse. Walk-out from eat-in kitchen to fully fenced yard. Sep. DR & lrg LR. Updated powder room w/granite counter top. Lots of room for the growing family. **\$230,900**

Call Angela Silcock, Sales Representative at 905-878-8101

20 WHITMER ST. 1127 HOUSTON DR. 946 SPRAGUE PL.



3 bed, 2.5 baths  
**\$369,900**



3 bed, 2.5 baths, all Brick  
SEMI. **\$384,900**



2 bed, 1.5 bath, freehold town.  
**\$299,900**



Call  
**Tim Gerrior**  
Sales Representative

Direct: **905-691-1662**  
Office: 905-878-8101  
Email: tim@timgerrior.com



**ROYAL LEPAGE**  
Meadowtowne Realty, Brokerage  
Independently Owned and Operated



**Alan McDonald**  
Broker

905-878-8101  
al@royallepage.ca



**FIVE-BEDROOM COUNTRY HOME**



Amazing setting for this beautiful 2,800 SF family home. Private wooded 0.9 Ac lot backing on protected Greenbelt, but only minutes from Milton and Hwy 401. Formal living & dining rooms, kitchen with breakfast area overlooking beautiful family/sun room. Large in-ground pool.

Virtual Tour at [www.obeo.com/687843](http://www.obeo.com/687843).

**There's No Place Like Home**



**DOROTHY TRUMAN**  
Sales Representative

Direct: **905-875-6666**  
dorothytruman@royallepage.ca

Follow Dorothy Down The Yellow Brick Road To Your New Home  
**Think Real Estate!**  
**Think Dorothy!**  
**GREENLIFE CONDOS?**  
Call ME to list your current home.  
View more listings at [www.dorothytruman.ca](http://www.dorothytruman.ca)

*Linda Schouten*  
Office: 905.878.8101  
Direct: 416.697.3422  
lindaschouten@royallepage.ca

**ROYAL LEPAGE**  
Meadowtowne Realty, Brokerage  
Independently Owned and Operated

**PLEASANTVILLE!**



Be the New Neighbour in this family friendly area! Appetizing, 4brm. Lindsay Model. Open Concept, Sundrenched Kit.w/eat-in, walk-out French doors. Fam. w/Fp. Fam.Liv/Din anchored in hrdw. Mstr.w/Spic ensuite, walk-in. Functional & Fun, Professionally Finished Basement. Come visit our Home Theatre! Pre-Sale Hm. Insp. **\$469,000.**  
[www.myvisualistings.com/vt/64840](http://www.myvisualistings.com/vt/64840)

**OVER 35 YEARS OF LOCAL REAL ESTATE EXPERIENCE**

**Sandy Del Papa**  
AN ACCREDITED HOME STAGING PROFESSIONAL

**Matthew Clapperton**

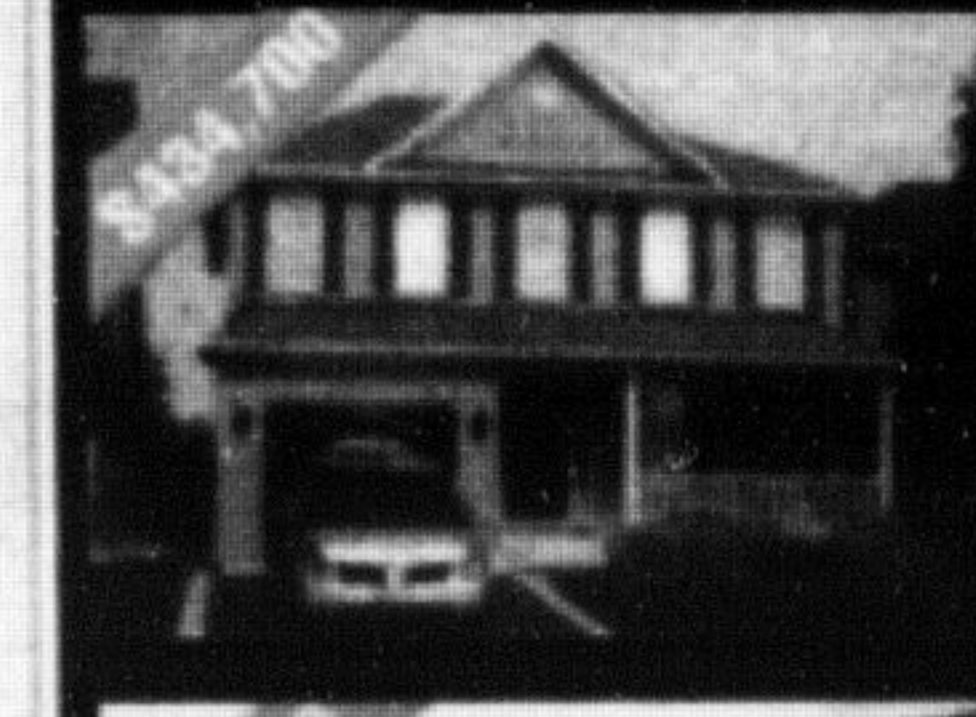
**905-878-8101**

**STUNNING NEW LISTING - ACROSS FROM PARK**  
Be the first to view



Extensively upgraded beauty on a premium 100ft. deep lot. You'll love the 9ft. ceiling, gleaming dark hardwood floor & matching staircase. Formal D.R. with white pillars & double crown moulding on the coffered ceiling, the classic white gas F.P. in the great room and upgraded cabinetry in kitchen with granite counter-tops and so much more! Call Sandy today to view.

**ANOTHER CHANCE TO OWN A PARK FRONT HOME!**



**Don't Miss Out This Time!**  
Lovely 4 Bedroom Lindsay model by Mattamy directly across from the park. Many upgrades including: Oak hardwood flooring in the living, dining and family rooms, oak staircase, fireplace in the family room, entry door to garage, alarm system, upgraded basement windows, cold cellar, upgraded window blinds and light fixtures. Just move in and enjoy! **\$434,700**



**SOLD!**  
ACROSS FROM THE PARK



**SAM LEVIN**  
Sales Rep.

905-878-8101

364-0046

**Your West End Connection**



**\$309,900**

**ONE OF THE LARGEST IN "MAPLE CROSSING" COMPLEX**

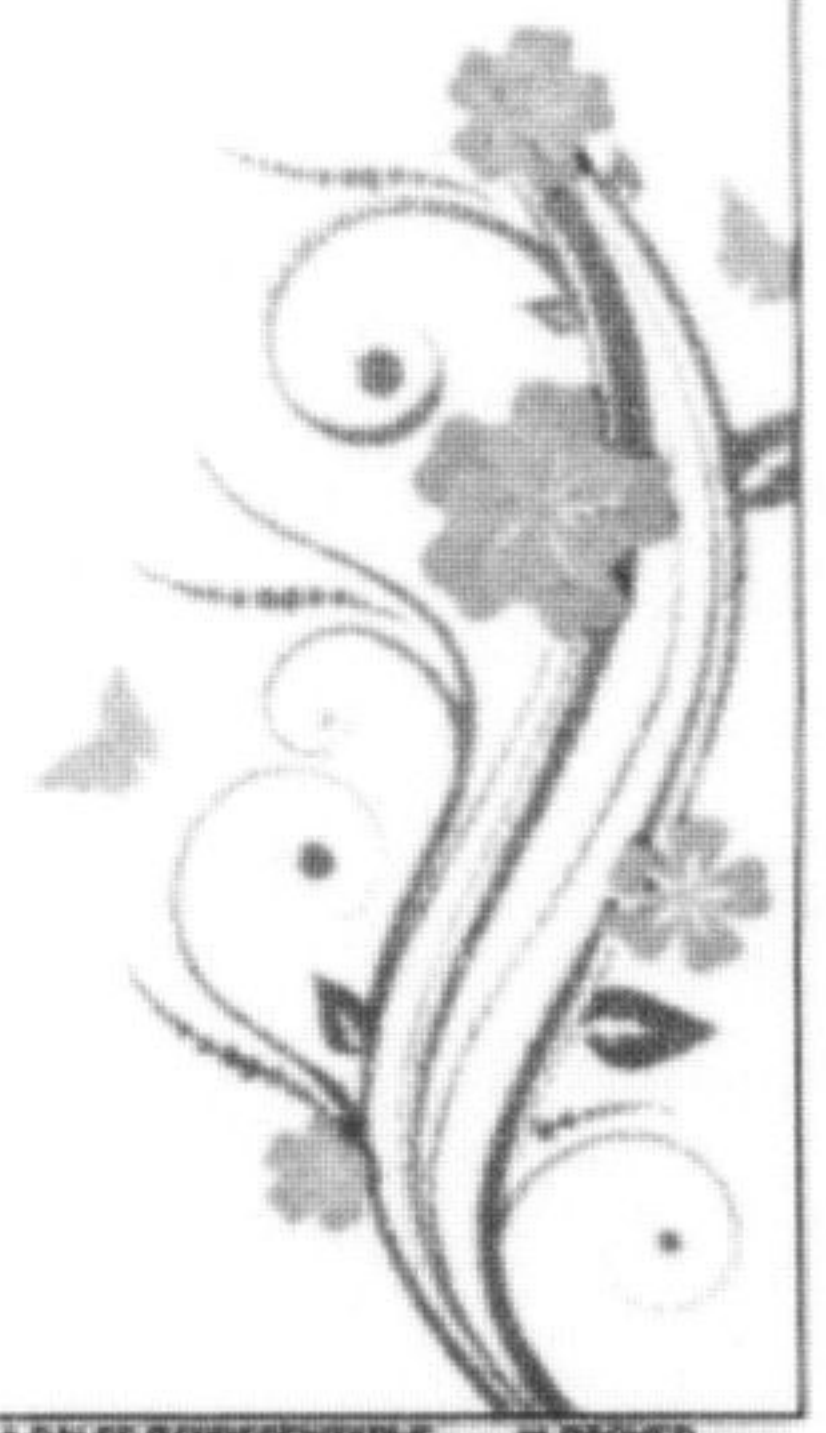
Wake up with escarpment views. The Windsor 2 Model has it all - on top floor, corner unit, 2 large bedrooms, 2 baths (one ensuite), large panoramic windows almost from floor to ceiling, custom tinted, combined large living/dining, cathedral ceilings with corner fireplace. Upgraded kitchen cabinets, stainless steel appliances + impressive view from your own balcony. Must see! Add own garage, locker, plus ensuite laundry. Professionally painted, close to all amenities, movie theatre, art centre, public and GO transit, deli, gas stations and furthermore, steps to Hwy 401.

**Joyce Hagevik**

Farewell to our dear friend and co-worker. Remembering all the good times. You will be missed greatly.

Yesterday brought the beginning tomorrow brings the end and somewhere in the middle we became the best of friends.

From all your friends and co-workers at Royal LePage Meadowtowne



\* SALES REPRESENTATIVE \*\* BROKER