

2012 Hyundai Genesis Sedan gets refreshed look and big boost in power

by Neil Moore
METROLAND MEDIA
CARGI/IDF MAGAZINE

LAS VEGAS, Nevada: Some question the wisdom of a non-premium automaker building premium cars, but I think it's quite clever.

Over the course of a decade, the swift succession of XG300, XG350 and Azera sedans, along with the Veracruz crossover and finally the Canadian and North American 'Car of the Year' Genesis Sedan, has virtually wiped out all but the most painful memories of the Pony and Stellar.



It's a speedy and successful repositioning of Hyundai from cheap-and-cheerful to a serious contender in any segment they compete.

I would also suggest that despite the lack of brand cachet, the Genesis rear-wheel-drive luxury sedan can hold its own against just about any vehicle in its price range.

Which in this case spans an entry point of \$39,999 for the base 3.8-litre to \$53,499 for the

more powerful and fully-loaded Genesis 5.0-litre R-Spec.

This sounds like a lot of money for a Hyundai, and for 2012 it's even more than the current model. The base car has gone up \$1,000 and the top-trim, V6 powered Genesis is now priced the same as last year's 4.6-litre V8.

That being said, these models all benefit from a big bump in power, better fuel economy, an eight-speed automatic (up from six-speed) and more standard and available content.

Although the 2012 Genesis enjoys a big bump in power, exterior changes are more subtle. The refreshed model does, however, appear more aggressive with a larger lower intake and redesigned trapezoidal headlights with striking LED accents. From the side, rocker panels protrude even more, and brushed aluminum window surrounds enhance its assertive profile.

The big news for Genesis is the R-Spec, its single all-in, eight-cylinder trim level,

powered by Hyundai's largest and most powerful engine to-date – the 5.0-litre Tau V8 with gasoline direct injection (GDI).

The Tau, which was recently named to the Ward's Ten Best Engines list, produces 429 hp and 376 lb/ft of torque. This not only bests the previous 4.6-litre V8 engine's 385 hp and 333 lb/ft, but with an output of 85.8 hp per litre, sits

• see CONSISTANT on page A41

SOME OF LIFE'S TOUGHEST CONVERSATIONS HAPPEN OVER COFFEE.

When was the last time you had that conversation about Life Insurance?
Talk to an agent today about your life insurance needs.



Don MacRae, Agent
Bus: 905-878-8109
don.macrae.ggvt@statefarm.com



Anita Cutaia, Agent
Bus: 905-878-8871
anita.cutaia.ggvr@statefarm.com



LIKE A GOOD NEIGHBOUR, STATE FARM IS THERE.

State Farm International Life Insurance Company Ltd • Head Office: Aurora, Ontario statefarm.ca
P062021CN Available only in Ontario, Alberta and New Brunswick

+0% PURCHASE FINANCING

ON SELECT MODELS

PLUS

WALK AWAY

PROTECTION FOR VEHICLE FINANCING
AUTHORIZED RETAILER

2011 MALIBU LS



4 Cyl, Automatic, Air Cond, Power Assists, Body Side Mouldings, OnStar and More. St#G315859

NOW ONLY \$23,720

\$183 @ 0% BI-WEEKLY PURCHASE PRICE
PLUS HST • BI-WEEKLY/60 MONTHS • \$0 DOWN

2011 CHEVY EQUINOX



Power group, 18" alum wheels, interface pkg Stk 335081

NOW ONLY \$28,680

\$203 @ 3.29% BI-WEEKLY PURCHASE PRICE
PLUS HST • BI-WEEKLY/72 MONTHS • \$0 DOWN

2011 SILVERADO W/T

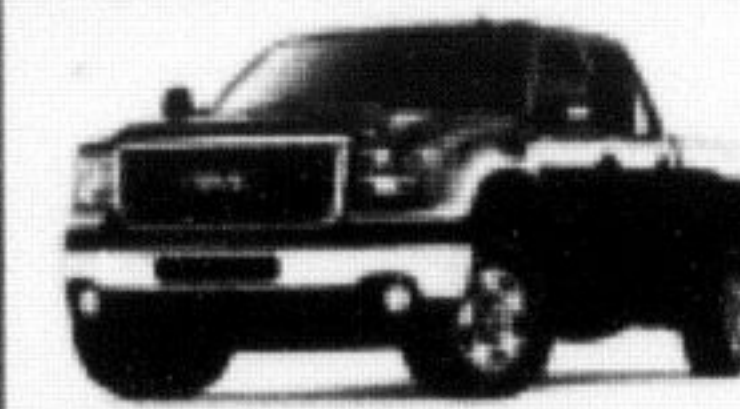


Reg Cab, Vortec 4.3L Engine, Auto Air Cond, OnStar, Locking Diff, 8" Box St#349271

NOW ONLY \$20,310

\$124 @ 3.0% BI-WEEKLY PURCHASE PRICE
PLUS HST • BI-WEEKLY/84 MONTHS • \$0 DOWN

2011 GMC 2500 DENALI



Duramax Diesel, Allison Trans, P.Sunroof, Touch Screen Nav, Rear View Camera and More. St#W197651

NOW ONLY \$68,120

\$453 @ 5.79% BI-WEEKLY PURCHASE PRICE
PLUS HST • BI-WEEKLY/84 MONTHS • \$0 DOWN

2011 GMC SIERRA 3500 CREW CAB 4WD



Duramax diesel, rearview camera, Allison 6 spd, trail gate equipment pkg. Stk 227878

NOW ONLY \$59,990

\$399 @ 5.79% BI-WEEKLY PURCHASE PRICE
PLUS HST • BI-WEEKLY/84 MONTHS • \$0 DOWN

2011 GMC TERRAIN SLE FWD



A/C, ISA preferred equipment grp. & more. Stk #465370

NOW ONLY \$27,380

\$168 @ 3.0% BI-WEEKLY PURCHASE PRICE
PLUS HST • BI-WEEKLY/84 MONTHS • \$0 DOWN

2011 SILVERADO 2500 HD



Crew Cab, Duramax Diesel, Allison Trans, Locking Differential, Safety Pkg, All Power Assists. St#W143839

NOW ONLY \$54,130

\$359 @ 5.79% BI-WEEKLY PURCHASE PRICE
PLUS HST • BI-WEEKLY/84 MONTHS • \$0 DOWN

2011 CADILLAC CTS COUPE



3.5L, AWD, Leather, Luxury Level One Package. Stk # 122067

NOW ONLY \$50,965

\$339 @ 5.79% BI-WEEKLY PURCHASE PRICE
PLUS HST • BI-WEEKLY/84 MONTHS • \$0 DOWN

2011 CHEVY MALIBU 2LT



Power group and More. St# 386540

NOW ONLY \$26,540

\$205 @ 0% BI-WEEKLY PURCHASE PRICE
PLUS HST • BI-WEEKLY/60 MONTHS • \$0 DOWN

2011 GMC SIERRA CREW CAB 4X4



5.3L, V8, 6 Speed, Auto, HD Trailer Equipment, Power Drivers Seats, Tailgate Equipment Package. St# 295392

NOW ONLY \$35,680

\$217 @ 3% BI-WEEKLY PURCHASE PRICE
PLUS HST • BI-WEEKLY/84 MONTHS • \$0 DOWN

2011 AVALANCHE LTZ 4X4



Fully equipped, leather, sunroof, 20" chrome rims, all power assists & more. Stk 167163

NOW ONLY \$49,545

\$299 @ 3.0% BI-WEEKLY PURCHASE PRICE
PLUS HST • BI-WEEKLY/84 MONTHS • \$0 DOWN

2011 CHEVY SILVERADO LS 4X4



Crew Cab, Cheyenne Edition, Bluetooth, Full Power Group, Locking Differential, HD Trailering, OnStar, Box Liner. St#GBG169547

NOW ONLY \$29,790

\$183 @ 3.0% BI-WEEKLY PURCHASE PRICE
PLUS HST • BI-WEEKLY/84 MONTHS • \$0 DOWN

Prices include \$1350 freight, \$100 air tax, \$29.20 enviro tax, \$100 misc. fee and \$395 admin fee where applicable. All are plus HST and license fees. Financing is on approved credit based on 84 months bi-weekly @ 3.49% (example: \$10,000 financed would be \$782.11 bi-weekly, with cost of borrowing \$2426.57). Interest accrued during deferral period. Vehicles may not be exactly as shown.



801 Main St. East Milton
www.wallacechev.com
Sales Hotline 905-878-2355

Wallace