

**ROYAL LEPAGE**

Meadowtowne Realty, Brokerage  
Independently Owned and Operated



# ROYAL LEPAGE MEYER

905-878-8101 475 MAIN ST.

## WE ARE A RARE BREED IN REAL ESTATE



With over 29 years of Real Estate sales experience we know how to make you our top priority. Working together we are second to none.



**Carole D. Budworth\***  
905.864.9242

www.carolebudworth.com

**Ingrid Hollinger\***  
416.822.5558

www.ingridhollinger.com



### Call For Your Complimentary Home Evaluation



#### Opportunity of a Lifetime

Own a very prestigious home in downtown Milton within walking distance of shops, restaurants, churches, school, go bus. Great home office or bed and breakfast potential. Award winning home and landscaping. Visit the virtual tour at www.carolebudworth.com. MLS# 2026084. New price \$749,900



#### 3030 Purdy Drive, Brookville

New Price on this great 6 bedroom 6 bathroom, 2 full kitchen estate home. Call Ingrid for your private showing 416-822-5558. \$1,029,000.



**1193 Mowat Lane**



**1061 Guelph Line**

## Harnden ~ Sedgwick ~ Marshall



Together we serve you better!

**ROYAL LEPAGE**

Meadowtowne Realty, Brokerage

Independently Owned and Operated

www.royallepage.ca



This 4bdrm Backsplit with huge Corner Lot in Timberlea is move-in ready. Eat-in Maple Kitchen with Bevelled Doors out to covered Trex Decking leading to the relaxing pond & lush Gardens. Finished from top to bottom this Home is sure to please. Give Kim a call!

Serving all your real estate needs...

Residential ~ Heritage  
Country ~ Commercial

Office  
**905.878.8101**  
Toll Free  
**1.800.514.3316**

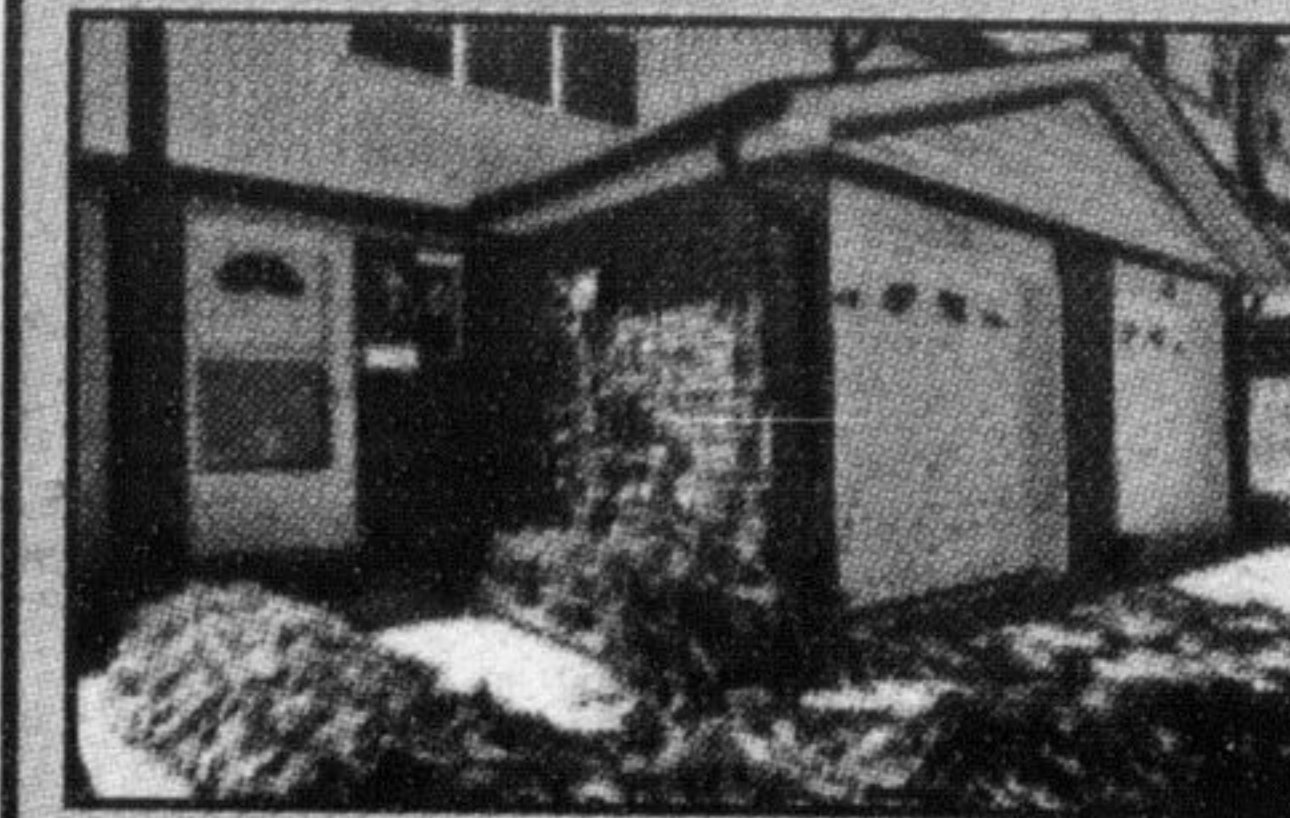
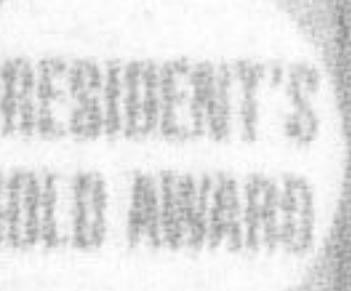


## Eva Gooding\*

Sales Representative

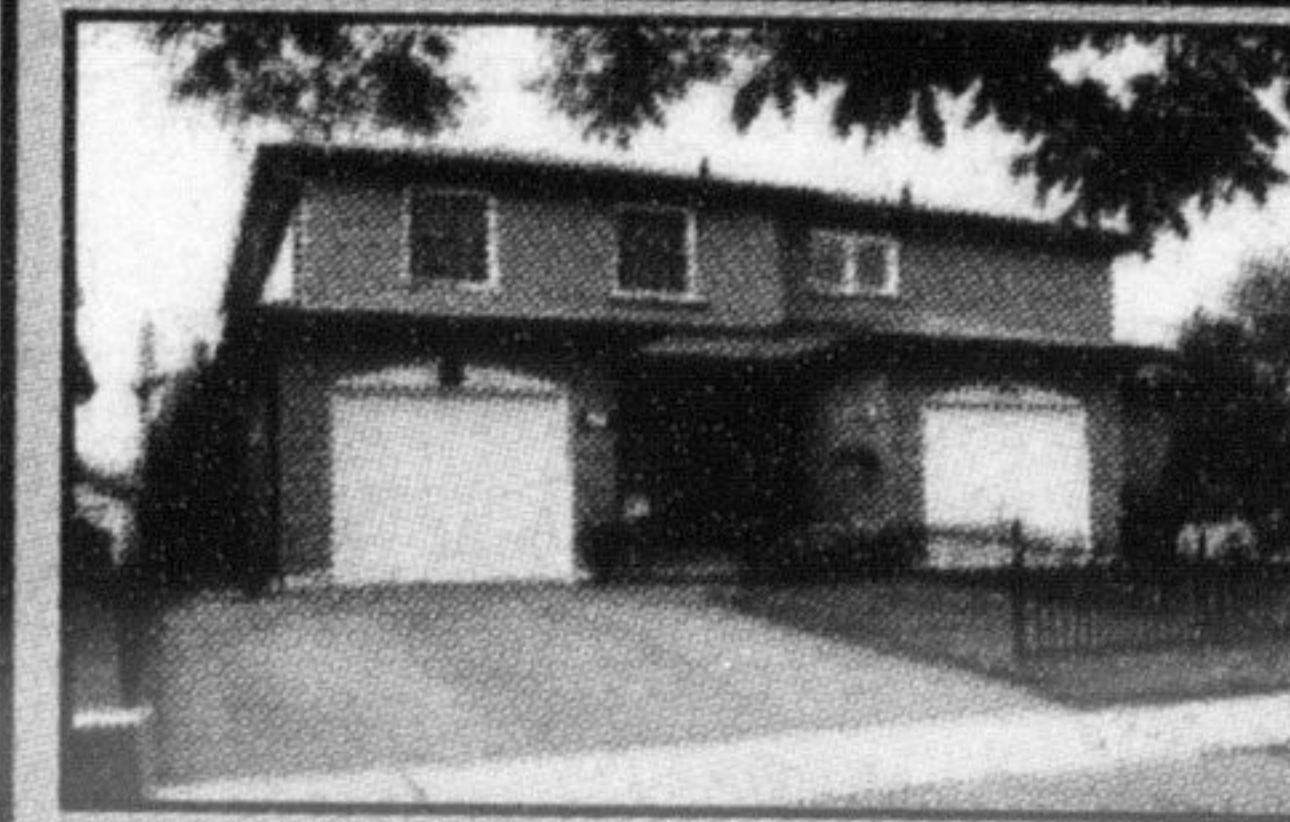
Office **905-878-8101**

Direct **905-691-2401**



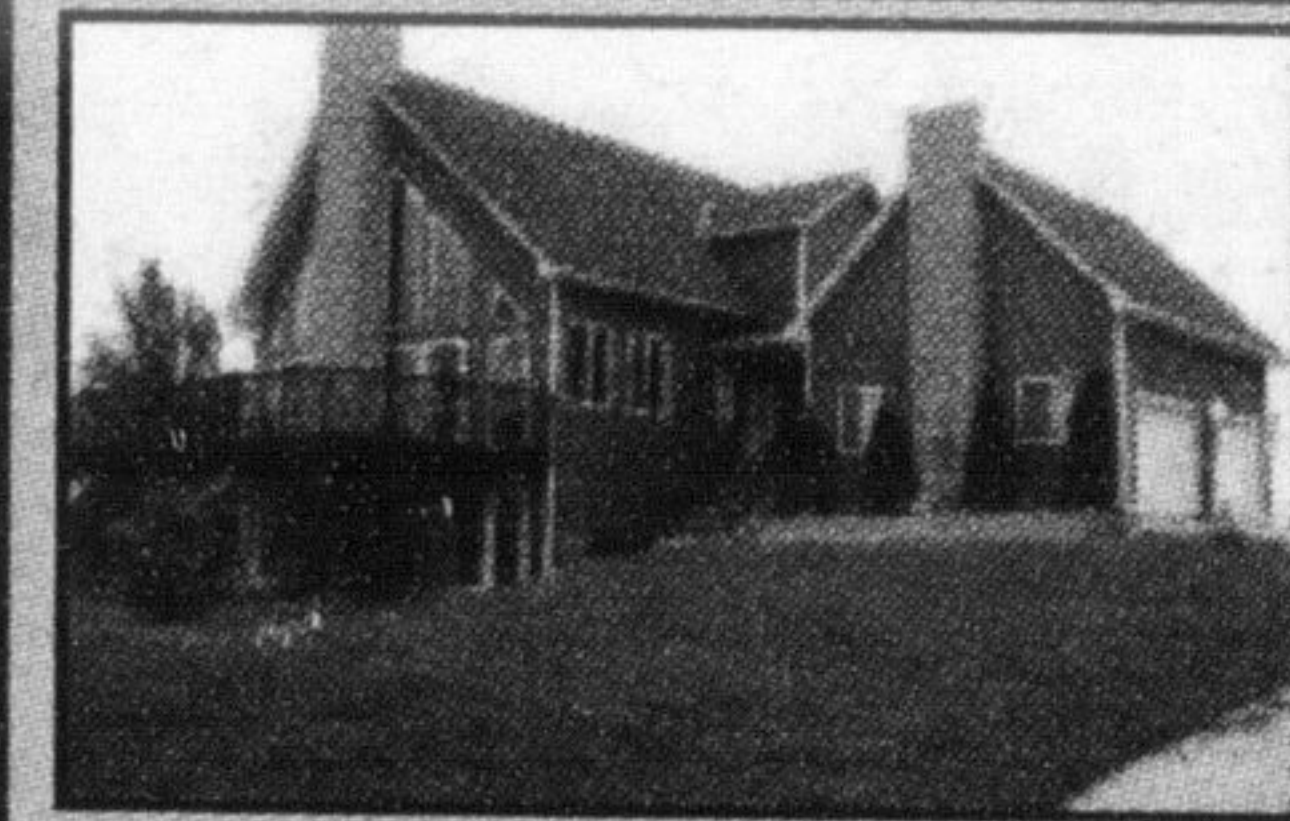
#### MULTI LEVEL DESIGN...

Positioned in a mature, friendly well established neighbourhood within walking distance and amongst the charming Shoppes and Dining of downtown Milton, Landscaped front and back yards, Totally renovated from top to bottom with attention to every detail, Gourmet Kitchen amazing to entertain in with all appliances included, Three renovated washrooms, Quiet and cozy finished lower level ideal for a recreation room or office, Flexible closing date. **Listed at \$253,500.** Call Eva Gooding to view.



#### PRIVATE BACKYARD

Super semi. with enclosed front porch, 2 tier cedar deck & hot tub in backyard, double driveway, kitchen with centre island with cupboards, hardwood floors in living/dining room & hall, wood burning fireplace in living room, master bedroom with 3 piece ensuite & 2 closets, renovated bathrooms, plus several renovations throughout. **Listed at \$349,900.** Call Eva Gooding to view.



#### CHALET STYLE, ONE OF A KIND...

Two storey with full loft. Panoramic views of the escarpment from every window. Prime location. House is set back from road on .93 of an acre. Several walkouts and decks, from all levels of the house, including the Master Bedroom walkout. Master Loft includes full 12 x 12 ensuite with King size Jacuzzi tub, stand up shower, huge sitting area or family room. Professionally reconditioned 16X24 self enclosed kayak pool, with decking and sitting area with Professional Landscaping. A Beautiful Home. **Listed at \$647,000.** Call Eva Gooding to view.



#### DESIRABLE HAWTHORNE VILLAGE

Sought after Hawthorne Village on the escarpment. Premium 36' wide lot, double garage, large front porch, all brick very appealing exterior, gorgeous home, double door front entry, gourmet style rich espresso cabinets and centre island in kitchen with top of the line appliances. Separate side entrance to basement with rough in for 3 piece bathroom, 2nd floor family and laundry room. Prime location, even more attractive with the upcoming Laurier University Campus close by. **Listed at \$484,900.** Call Eva Gooding to view.

## Do You Own a House on Kingsleigh Court?

Then I have a qualified buyer who wants to meet you! Call me right now for more details!



**Chris Lightfoot**

Sales Representative

Direct 905-876-7979

905-878-8101

www.chrislightfoot.ca

**ROYAL LEPAGE**

Meadowtowne Realty, Brokerage

Independently Owned and Operated



REAL ESTATE WITH REAL RESULTS.

### Coming Soon!!

Beautiful Campbellville Estate on huge lot - summer closing!!

### 6 Acre Escarpment Lot!

NOW AVAILABLE - \$525,000 - perfect for building your custom home!! Call me today for more details. 905-876-7979



**SOLD**

**\$419,900**

### Bright & Beautiful!

Located in Guelph. 'Ashton 4' model on 45x105 foot lot by Thomasfield Homes. Extended build makes house almost 2000 sq ft. Upgrades include main floor den, large & extra deep ensuite tub, gorgeous landscaped exterior w/interlocking patio and driveway. Finished basement includes guest suite & 3 pc bath, large rec room w/gas fireplace and more-don't miss this one!!



## Kim Coulter\*

Sales Representative

905-691-1148

Direct Line



OPEN HOUSE Saturday & Sunday 2-4pm 504 Churchill Ave.



### DORSET PARK CUTIE

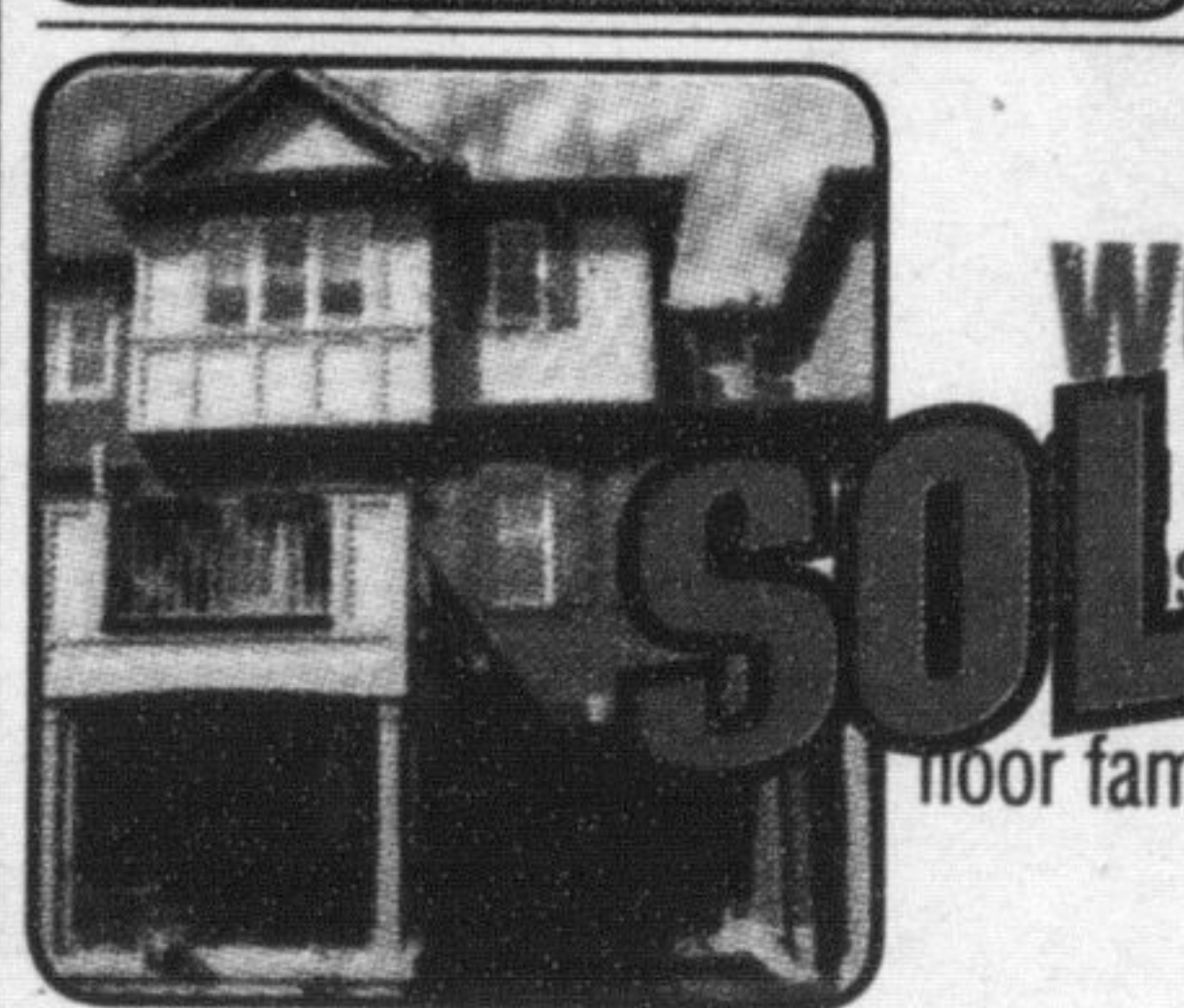
Renovated and ready to move in! Huge 105' X 72' lot on quiet street close to schools and GO. Updates include windows, roof, driveway, doors, shed, back fence, hardwood floors, furnace, updated kitchen & bathroom & more. Don't miss this one! **\$389,900**

OPEN HOUSE Saturday & Sunday 2-4pm 1487 Maple Ave #302



### WINDSOR MODEL

Easy living in comfort and style! 1013 sq ft - 2 bedrooms and 2 full bathrooms-master ensuite, appliances included, ensuite laundry, underground parking, storage locker. **\$272,900**



### WOODBINE MODEL

**SOLD!** 2 bedrooms, 2 washrooms - 5 piece kitchen, double door walk-in with Escarpment view, ground floor family room, main floor laundry. **\$314,000**

Call KIM COULTER at 905-691-1148

### Let Our Experience Guide You

Whether you are looking to sell or buy a home, call us for guidance!

**Adina Nonis**

Sales Representative  
Direct: 416.721.1311  
adinanonis@royallepage.ca

**Angel Lyons**

Sales Representative  
Direct: 905.691.6147  
angellyons@royallepage.ca

PROUD SPONSORS OF THE WOMEN'S SHELTER FOUNDATION

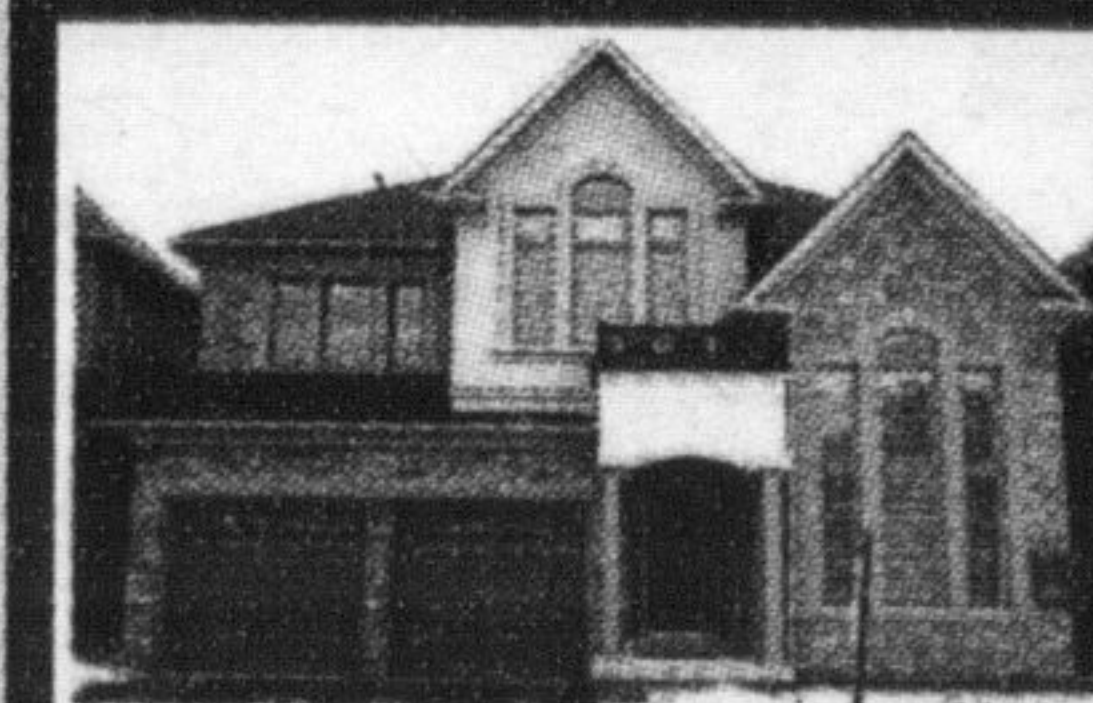
## STARTER HOME!

3 BEDROOM TOWNHOUSE available in Family Friendly area. Call Angel and Adina for details.

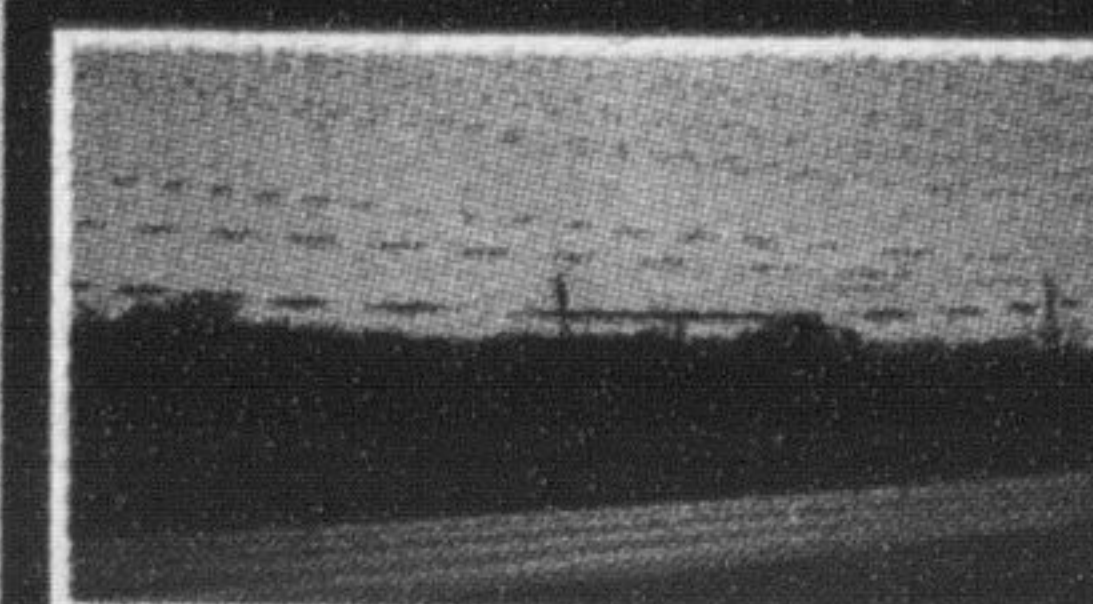


### BUNGALOW ON PRIME LOT

Nicely maintained home. Extra large backyard with patio and 1 car garage/workshop with woodstove. New Kitchen open to a dining room and living room. On a quiet street in Olde Milton. Close to Schools, Parks and walking distance to downtown Milton. Call today for a visit.



**SOLD!**  
OUR HOMES SELL!  
WE HAVE A BUYER FOR YOU!



### VACANT COMMERCIAL LOT

...In the town of Milton Vacant lot 1.14 acres zoned M1 to build your business or to invest your \$. Call us for more information.

IF YOU WANT MARKET STATISTICS FOR YOUR NEIGHBOURHOOD, PLEASE CALL US OR EMAIL US FOR A FREE REPORT.