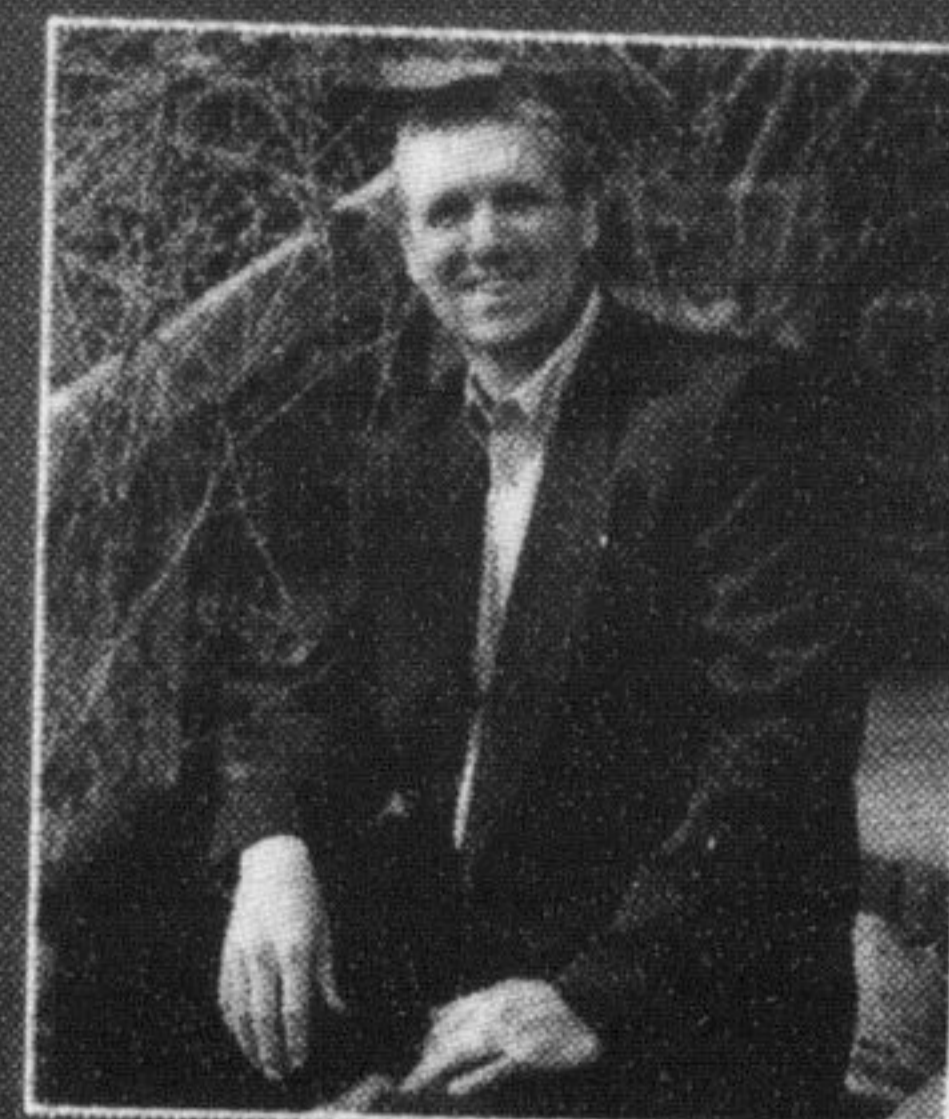




# RE/MAX REAL ESTATE CENTRE

INC., BROKERAGE

22 Ontario St. S.,  
Milton, ON  
**878-7777**



**MIKE MORGAN** B.A.  
Broker



*Your Real Estate Experts*  
*"Experience Counts"*

(905) 878-7777

[www.mikemorgan.ca](http://www.mikemorgan.ca) [www.lindsaymclaren.com](http://www.lindsaymclaren.com)

**LINDSAY J. MCLAREN**  
Sales Representative



**KRISTA BARTON**  
Sales Representative and Licensed Assistant to Lindsay J. McLaren



**NEW PRICE**

**BRICK BUNGALOW...**

...boasting separate living room, separate dining room, eat-in kitchen and 3 bedrooms on the main level. Finished lower level with 4th bedroom, washroom and rec. room with gas fireplace. Bonus features include recent shingles, furnace and central air along with central vac. All set on a large mature lot. Call Mike **\$389,900**



**SOLD!**

**GORGEOUS FOUR BEDROOM...**

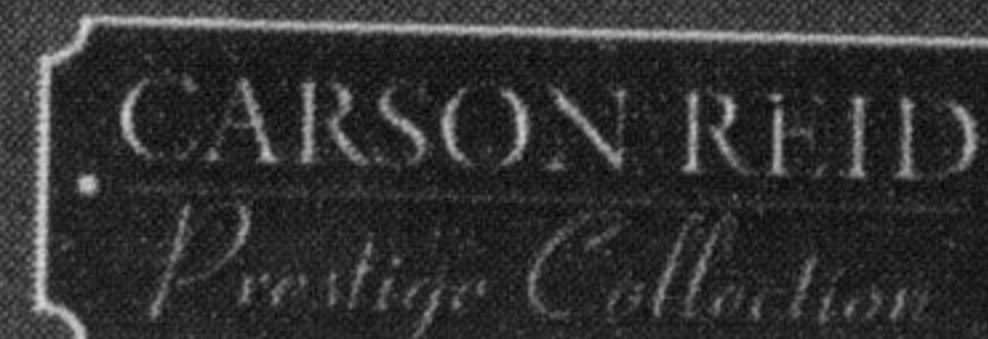
...home with hardwood in living room with fireplace, in separate dining room and in upper family room. Great kitchen with lots of cabinets and counter space overlooks the eat-in area with walkout to patio and fenced yard. Spacious bedrooms and master with full ensuite. You'll love the location with quick access to the 401 and stores. Just listed. Call Mike. **\$489,900**



**MODEL HOME FOR SALE**

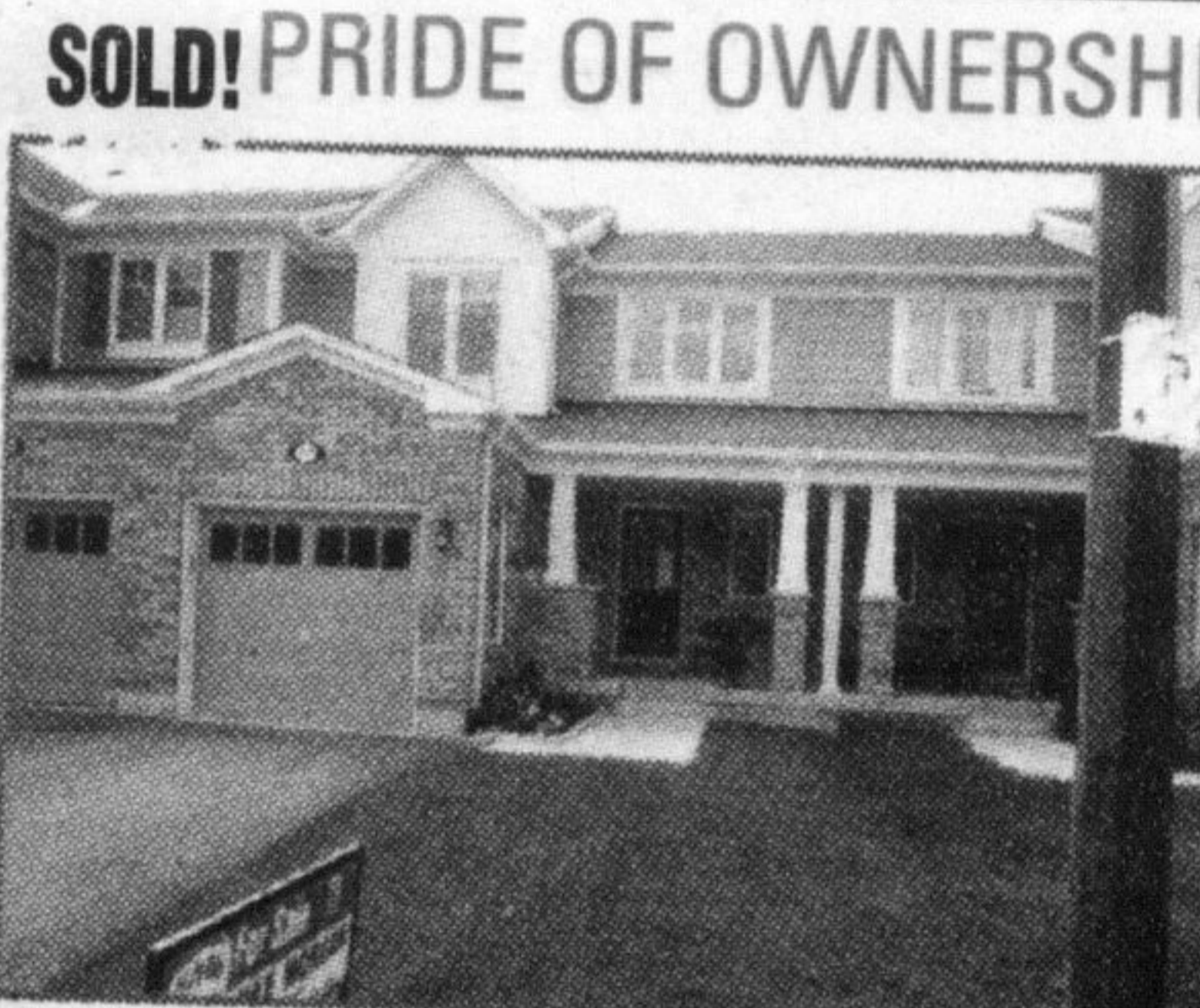
*The Carriage Manor II*  
4130 sq. ft.

Lindsay J. McLaren is the exclusive agent for



**BRIDLEWOOD**

Elegant country estate homes in Campbellville from the low \$900's. See our Website for further details



**SOLD! PRIDE OF OWNERSHIP... TRUE PERFECTION**

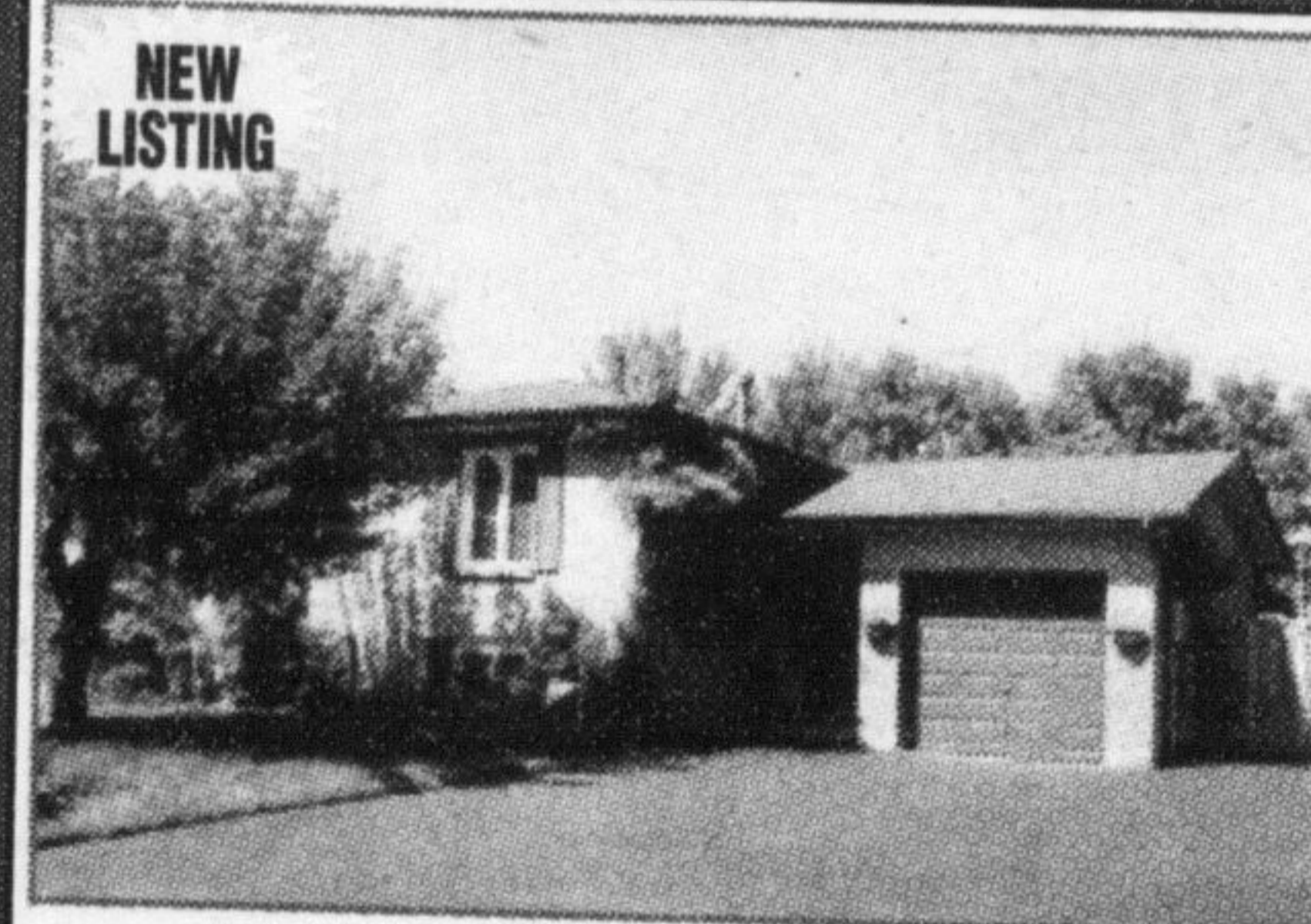
Gorgeous townhome, elegantly decorated with a spacious kitchen with rich cabinetry and center island with breakfast bar overlooking the comforts of the living room. Soothing colours continue through inviting 3 bedroom upper level. Bonus features include central air, central vac. Fenced yard and an Energy Star home. Just listed. Highly desirable. Call Mike. **\$314,900**

**STUNNING HORSE FARM ESTATE**



**NEW LISTING**

Very scenic 97.5 acre horse farm and country estate with newer custom stone manor style home, approx 3100sqft with walkout lower level overlooking ponds, fields and forest. Arena 72' x 160' stable 72' x 60' (6 box stalls, room for 8 more) open barn end of arena 72' x 60' (all new in 2004) 7 fenced paddocks & turnout sheds. Just listed. Call Lindsay. **\$1,450,000.**



**NEW LISTING**

**TIMBERLEA GEM!**

Well maintained with fresh, natural decor, hardwood floors, large eat-in kitchen and master bedroom with ensuite and walk in closet. The basement features a second kitchen, bathroom with stand up shower (2010), huge rec room with bar area and wood stove (extended family possibility). New roof (2011) newer windows, central vacuum and central air conditioning. Close to several schools, shopping and parks. Tons of parking, 4+ spaces and/or the rare Motorhome/boat parking. Don't miss this chance! Call Lindsay. **\$459,000.**



**BILL CURRIE**

Sales Representative, serving Milton & area since 1973!

**RE/MAX REAL ESTATE CENTRE**  
905-878-4944

See my featured properties and photo gallery at [www.billjcurrie.com](http://www.billjcurrie.com)

**HAS ALL THE "I WANTS"**



You will be impressed with this immaculate semi. approx. 1360 sq. ft. Features include MF Family Room with Gas FP, Sep. DR, Hardwood in DR & FR, 3 bdrms., 3 washrooms, beautiful Kitchen with w/o to patio & fenced yard. Two finished rooms on LL with 3-pc. washroom. Nicely landscaped Lot. Yours for **\$364,900.**



**ALL DRESSED UP & WAITING**

Raised bungalow with addition on lot 55' X 120'. Offers 5 bdrms., 3 full wshrms., MF Fam Rm, MF Laundry, Formal LR & DR. Gorgeous Kitchen with w/o. Finished LL with 2 bdrms & lge windows throughout. Numerous upgrades - MUST BE SEEN. 5 car parking. Pool in large back yard. Walk to schools & parkland. Call Bill to set up a personal viewing. Offered at **\$519,900.**



**875 MAPLE AVENUE, MILTON**

This spacious 4-level in Dorset Park offers 3 bedrooms, 2 washrooms, MF Family Room with gas FP & walkout to large deck & private yard. Office & finished Lower Level. OPTIONAL IN-LAW SUITE. Lots of parking. Call Bill to set up a personal viewing. Now asking **\$409,900**



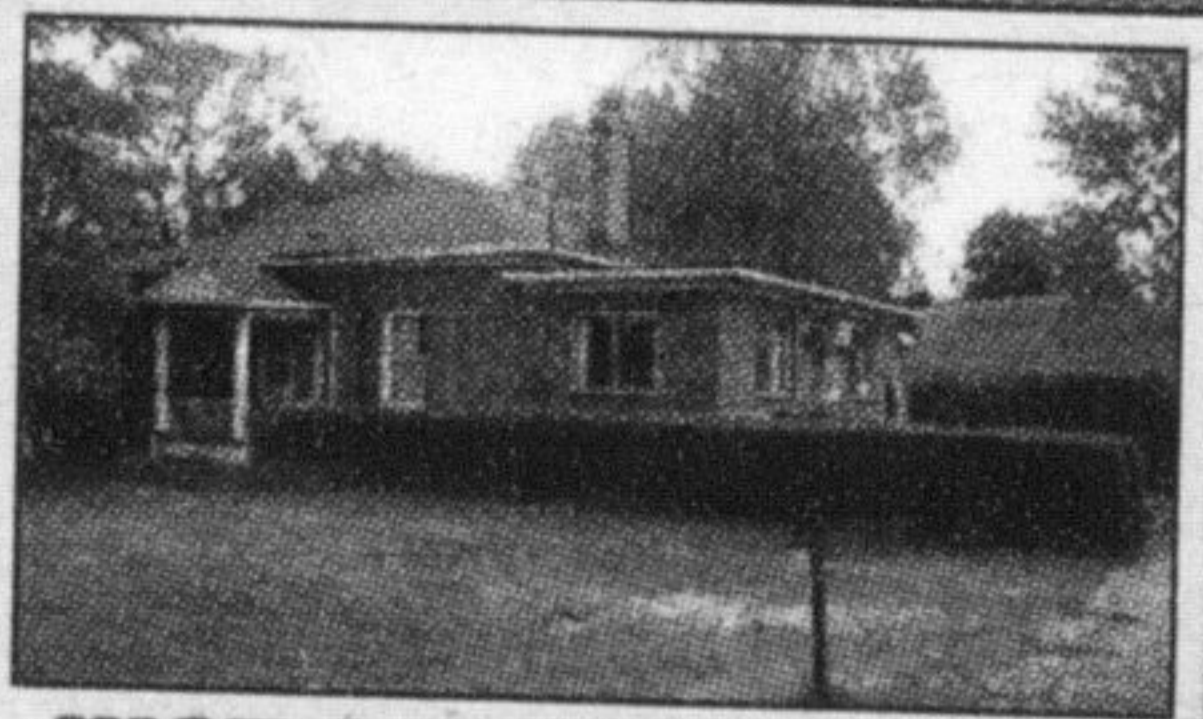
**COMMERCIAL INVESTMENT**

This well-preserved character building offers a location near downtown & great exposure for your profession. Main level offers separate LR, DR, Kitchen & washroom. Upper level has 3 or 4 bedrooms & washroom. Ten parking spaces. Front & rear entrances. Zoned C1 - B Commercial. Numerous uses. Yours for **\$658,900.**



**ENJOY the BEST of TOWN & COUNTRY**

Beautiful all-season back yard view of the Escarpment from this .75 of an acre property near downtown. Main Level offers huge eat-in Kitchen, spacious LR, 3 bedrooms & a washroom. LL is finished with oversized RR & wood-burning FP plus a bedroom. Added feature: Separate 2 Bedroom In-Law suite. Asking **\$649,900.** Contact Bill for an appointment.



**JUST SOUTH OF TOWN**

Two-bedroom brick bungalow on just under one acre of land. Numerous outbuildings. Great opportunity for the hobbyist! Lots of parking. Call Bill to view. Asking **\$384,900.**

**INVESTMENT KNOCKS** On approx. 2 PRIME ACRES in MILTON near MAIN STREET!!  
Many Uses -- **\$2,490,000**



**TEAM HILSON**  
**TERI LYNN\* & NORM\* HILSON**

\*Sales Representatives  
MEMBER OF THE REMAX HALL OF FAME  
[thilson@sympatico.ca](mailto:thilson@sympatico.ca) [ndhilson@sympatico.ca](mailto:ndhilson@sympatico.ca)  
[www.listednsold.com](http://www.listednsold.com)

**We are not #1 YOU ARE!**

*Understanding Team Work.*



**NEW PRICE!**

**DRESSED TO IMPRESS!**

Dressed to impress absolutely stunning Heathwood Lexington model offering over 4,500 sqft of living space. This home has it all and more from the minute you pull in to the triple car driveway you will realize that true pride of ownership exists. A large front foyer with beautiful ceramics and 18' ceilings set the stage rich dark hardwood flooring. **\$894,900**  
Please call today for your personal tour  
**289-242-3342.**



**EXCEPTIONAL HOME WITH ALL THE FIXINS!**

This beauty has it all from the minute you pull in to the double car drive you will want to call it home. Upgraded double door entry with transom window and decorative grills sets the stage. Elegant foyer with dark ceramics and rich dark hardwoods flow through the entire main floor. The 9' ceilings with pot lighting makes for a dramatic effect. The cozy sitting area with large windows will make you want to sit and enjoy the natural warmth. The kitchen is absolutely gorgeous with 9' ceiling, Stunning granite counters and magnificent cabinetry. **\$659,900**

