

FEATURE HOMES *Of The Week!*

Feature Home Section focusing on Resale Homes for Brokers, Sales Representatives and Related Businesses



BILL CURRIE*

Sales Representative, serving Milton & area since 1973!



RE/MAX REAL ESTATE CENTRE

905-878-4944

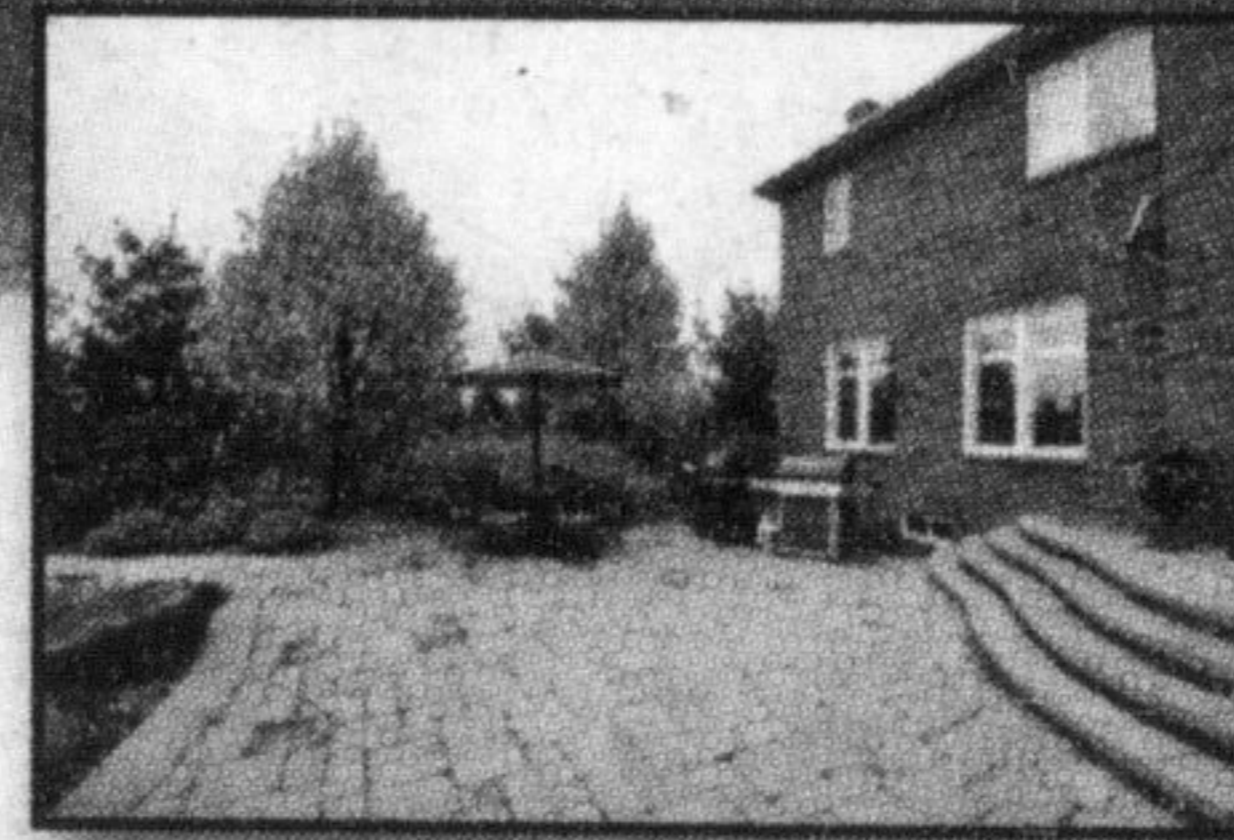
See my featured properties and photo gallery at www.billjcurrie.com

Open House 875 Maple Avenue, Milton



SEE FOR YOURSELF!!

Come out to an OPEN HOUSE this Saturday or Sunday to walk through this spacious 4-level home in Dorset Park. There are 3 bedrooms, 2 washrooms, Main Floor Family Room with gas Fireplace & a walkout to a large deck & private yard. Also offered is an Office, a finished Lower Level, and an OPTIONAL IN-LAW SUITE. Plenty of parking. **If you can't make the Open House, call Bill to set up your own personal viewing. Now asking \$409,900.**



This magnificent 4 bedroom home is situated on 2+ acres, professional landscaping include an in ground salt water pool, stone waterfall feature & mature gardens, w/in ground sprinkler system. Updated kitchen w/granite counters & glass backsplash!! **\$849,000.**



**OPEN HOUSE
SUNDAY 2-4pm**



28 Bridlewood Blvd., Halton Hills



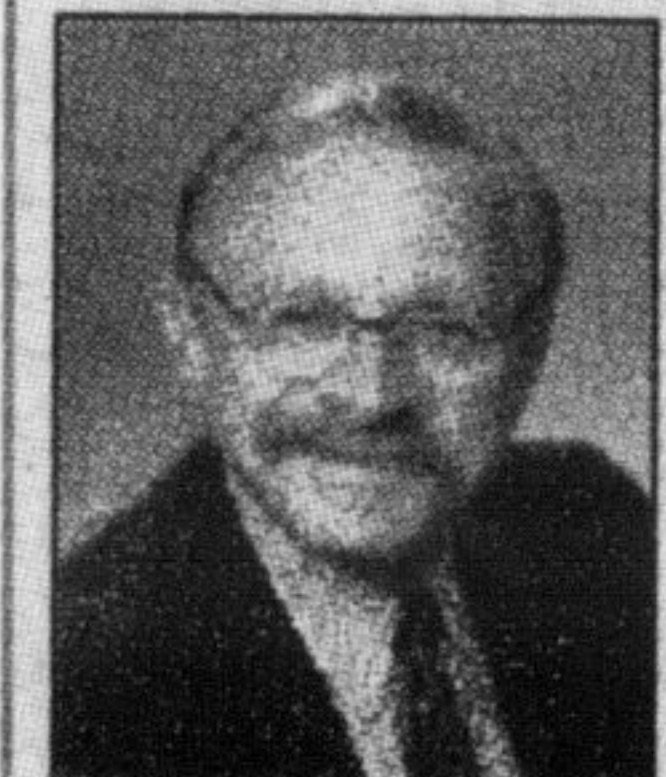
Christina Matesic
Sales Rep.
direct 905-875-8262



Kimberly Loveridge
Sales Rep.
direct 905-691-3941



office 905-878-8101



SAM LEVIN

Sales Rep.

office 905-878-8101

direct 905-864-9046

samlevin@royallepage.ca

**YOUR WEST END
CONNECTION**

SOLD (CON.) IN 1 DAY!

**WHO'S
NEXT?**

**99%
OF ASKING PRICE**



\$318,900

ONE OF THE BEST DEALS IN TOWN!

Fabulous Mattamy "the OAKGROVE", all brick, in popular Hawthorne Village by the escarpment. Corner unit or end unit fronting the park. Offers 2 larger bedrooms + den or 3rd bed, 3 bath, 2/4 piece and 1 two piece, enhancing ensuite with shower glass enclosure door plus additional guest bath. Posh kitchen, breakfast bar and mouse backsplash. Upgraded cabinets. Open concept living room and separate dining room w/access to large entertaining balcony/deck for great barbecues and socialize with friends and family while overlooking the park. Master w/ensuite and walk-in closet. Large foyer, inside access from garage, 2 car driveway path, gdo & 2 remotes compliments this bright and spacious home. Walking distance to shopping, recreation, schools & public transit. ALL APPLIANCES INCLUDED.



OPEN HOUSE

Saturday 2 - 4 pm
9521 Regional Rd. 25
(3 km North of 401, Milton)

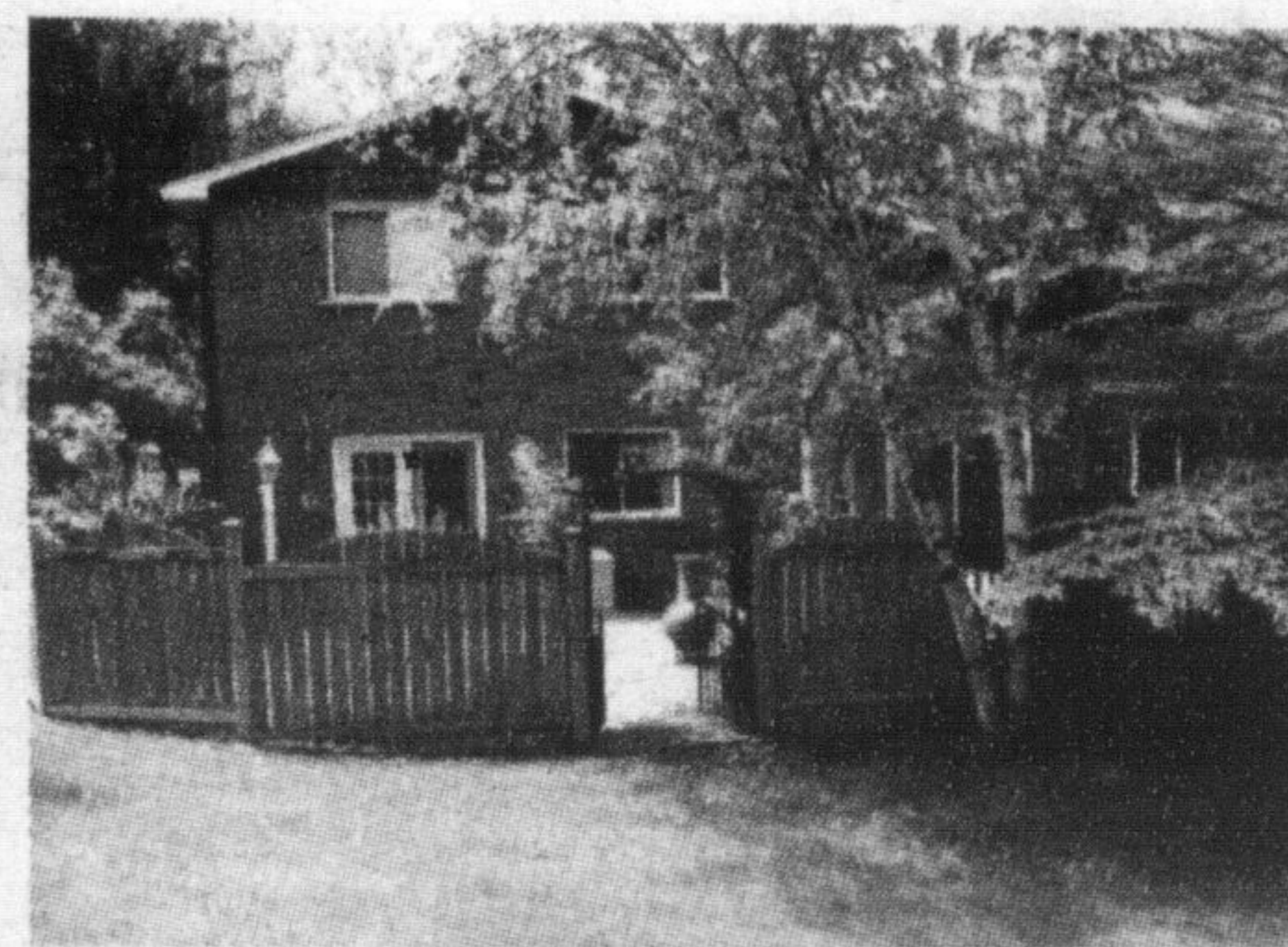
Jennifer Vogel
905-849-5151 **ROYAL LEPAGE**



MUSKOKA SETTING

Mature & secluded country home, manicured grounds, picturesque stream on 1.35 acres. Turn key, updated top to bottom, double garage plus 1200 sq. ft. workshop. Ideal for home business or hobbyist.

A MUST SEE!!! \$798,000



905-822-6900 Royal LePage Real Estate Services Ltd., Brokerage