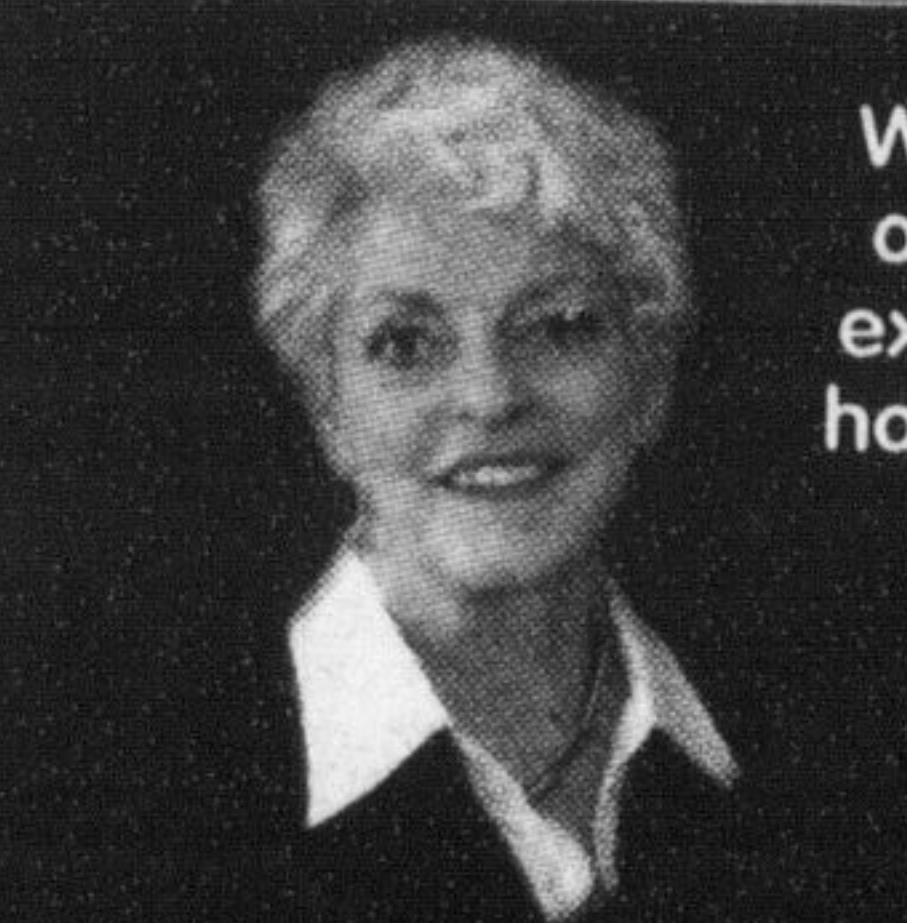


ROYAL LEPAGE

Meadowtowne Realty, Brokerage
Independently Owned and Operated



ROYAL LEPAGE ME
905-878-8101 475 MAIN ST.



With over 27 years of Real Estate sales experience we know how to make you our top priority.

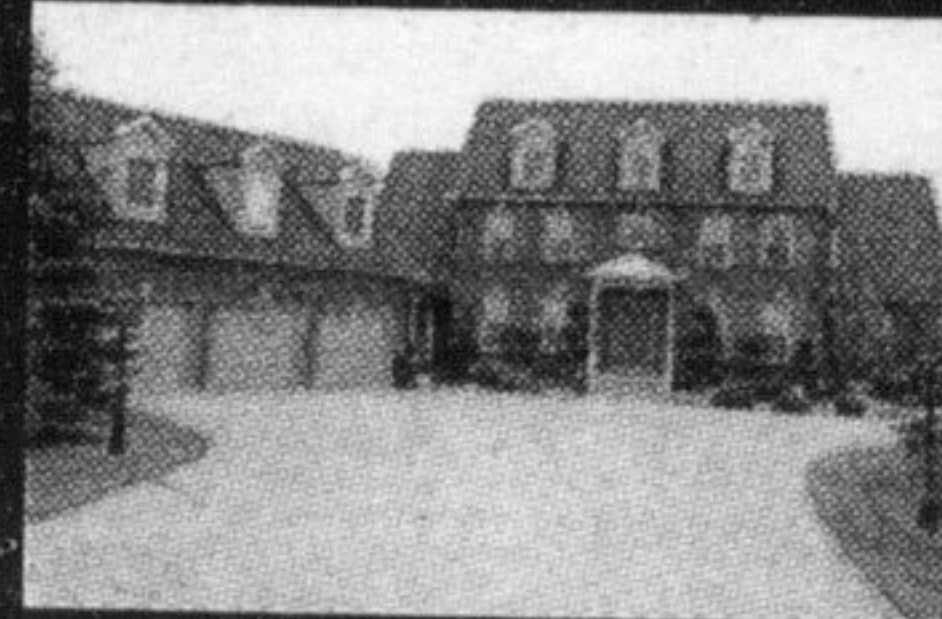
Carole D. Budworth*
905.864.9242
www.carolebudworth.com



Working together we are second to none.



Ingrid Hollinger*
416.822.5558
www.ingridhollinger.com



Colonial-Style Home \$1,089,000

With dormers and exposed aggregate driveway. This home has 2 full kitchens with large eat-in areas, 6 bedrooms, 6 bathrooms, 6 walkouts to 1.5 acre landscaped back yard, games room, family room, great room, formal living room, and dining room. This wonderful home has so much to offer you just have to see it. Call Ingrid for your private showing.



I'm Stunned...

...by a mason in 1862. Set on a 1/2 acre. Ideal Country Inn & Bed & Breakfast. Cool in Summer and Cozy in the Winter. Like all Stone Homes I have Wide Plank Floors & Wide Window Sills. Perennial Gardens & Stately Trees. I'm not Ordinary, I'm Original. Call for your private showing. \$399,000. Call Ingrid. 416-822-5558.



Quiet Family Area

Well done executive home on oversized landscaped lot, in quiet family area of Milton close to schools, shopping, go train. Many upgrades of roof, hardwood, windows, landscaping, carpet, furnace and central air. No need to preview this home. Show with confidence. Call Carole today for a personal guided tour. MLS# 2028590.



Super Executive Model Home

Close to all commuting, shops, schools, parks, restaurants. Large, open concept home, gleaming hardwood floors, separate dining room, eat-in kitchen, pillars. Great room with gas fireplace, huge 2nd storey loft and computer niche. Offers everything you might want in a home. Includes all stainless steel appliances. Inviting front porch, double garage. Call Carole today for your viewing. MLS# 2027139.

Harnden ~ Sedgwick ~ Marshall



Together we serve you better!

Kim Harnden, Mandi Sedgwick, Mirella Marshall
Sales Representatives

ROYAL LEPAGE

Meadowtowne Realty, Brokerage
Independently Owned and Operated

www.royallepage.ca



Ideal country living on 1 acre treed lot is this warm bungalow with a great open floor plan. Private yard with room to roam.

Only minutes away from Milton, G'town & Mississauga and great for commuting. Just give Kim a call.



Build your dream home on this beautiful 100 acres. Enjoy the peace and quiet, the scenic views and yet have the convenience of the nearby towns. Priced at \$797,500.

For more info call Mirella 905-878-8101

Serving all your real estate needs...

Residential ~ Heritage ~ Country ~ Commercial

Office 905.878.8101

Toll Free 1.800.514.3316

6 Acre Escarpment Lot!

NOW AVAILABLE - \$525,000

- perfect for building your custom home!!

Call me today for more details. 905-876-7979



Chris Lightfoot

Sales Representative

Direct

905-876-7979

905-878-8101

www.chrislightfoot.ca

ROYAL LEPAGE

Meadowtowne Realty, Brokerage
Independently Owned and Operated



\$419,900

Bright & Beautiful!

Located in Guelph. 'Ashton 4' model on 45x105 foot lot by Thomasfield Homes. Extended build makes house almost 2000 sq ft. Upgrades include main floor den, large & extra deep ensuite tub, gorgeous landscaped exterior w/interlocking patio and driveway. Finished basement includes guest suite & 3 pc bath, large rec room w/gas fireplace and more-don't miss this one!!

Coming Soon!!

Beautiful Campbellville Estate on huge lot - summer closing!!

REAL ESTATE WITH REAL RESULTS.



Kim Coulter*

Sales Representative

905-691-1148

Direct Line



OPEN HOUSE Saturday 2-4pm 1487 Maple Ave #302



New Listing

WINDSOR MODEL

Easy living in comfort and style! 1013 sq ft - 2 bedrooms and 2 full bathrooms-

master ensuite, appliances included, ensuite laundry, underground parking, storage locker.

\$279,400

OPEN HOUSE Sunday 2-4pm 897 Willingdon Cres



New Listing

WOODBINE MODEL

1356 sq ft. 3 bedrooms, 2 wash-rooms - 5 piece semi-ensuite, eat-in kitchen, double door walk-out to balcony with Escarpment view, ground floor family room, main floor laundry.

\$314,000

Call KIM COULTER at 905-691-1148



Eva Gooding*

Sales Representative

Office 905-878-8101

Direct 905-691-2401

PRESIDENT'S GOLD AWARD



MATTAMY'S STONE & BRICK QUINCEY MODEL

Premium Landscaped Lot looking onto a Park. Double Finished Garage plus 4 car parking in driveway. You'll be introduced to an interior show place. Double door entry with Pillars, 9' Ceilings, Energy Star Kitchen with Centre Island, Backsplash, Crown Moulding, Bamboo and Ceramic Flooring throughout. Freshly Painted. Listed at \$476,500. Call Eva Gooding to view.



CHALET STYLE, ONE OF A KIND

Two storey with full loft. Panoramic views of the escarpment from every window. Prime location. House is set back from road on .93 of an acre. Several walkouts and decks, from all levels of the house, including the Master Bedroom walkout. Master Loft includes full 12 x 12 ensuite with King size Jacuzzi tub, stand up shower, huge sitting area or family room. Professionally reconditioned 16x24 self enclosed kayak pool, with decking and sitting area with Professional Landscaping. A Beautiful Home. Listed at \$647,000. Call Eva Gooding to view.



DESIRABLE HAWTHORNE VILLAGE

Sought after Hawthorne Village on the escarpment. Premium 35' wide lot, double garage, large front porch, all brick very appealing exterior, gorgeous home, double door front entry, gourmet style rich espresso cabinets and centre island in kitchen with top of the line appliances. Separate side entrance to basement with rough in for 3 piece bathroom, 2nd floor family and laundry room. Prime location, even more attractive with the upcoming Laurier University Campus close by. Listed at \$484,900. Call Eva Gooding to view.



DOUBLE BRICK CENTURY HOME

From the porch of this double brick century home you'll be introduced to both an exterior and interior showplace. 3 story's above ground plus finished lower level with separate entrance, 2 family rooms; 3 full bathrooms, cedar outbuilding with hydro. Close to Victoria Park. Listed at \$319,900. Call Eva Gooding to view.

Let Our Experience Guide You

Whether you are looking to sell or buy a home, call us for guidance!

Adina Nonis

Sales Representative

Direct 416.721.1311

adinanonis@royallepage.ca

Angel Lyons

Sales Representative

Direct 905.691.6147

angellyons@royallepage.ca

PROUD SPONSORS OF THE WOMEN'S SHELTER FOUNDATION



BUNGALOW ON POOL SIZE LOT

Nicely maintained home. Extra large backyard with patio and 1 car garage/workshop with woodstove. New Kitchen open to a dining room and living room. On a quiet street in Olde Milton. Close to Schools, Parks and walking distance to downtown Milton. Call today for a visit.



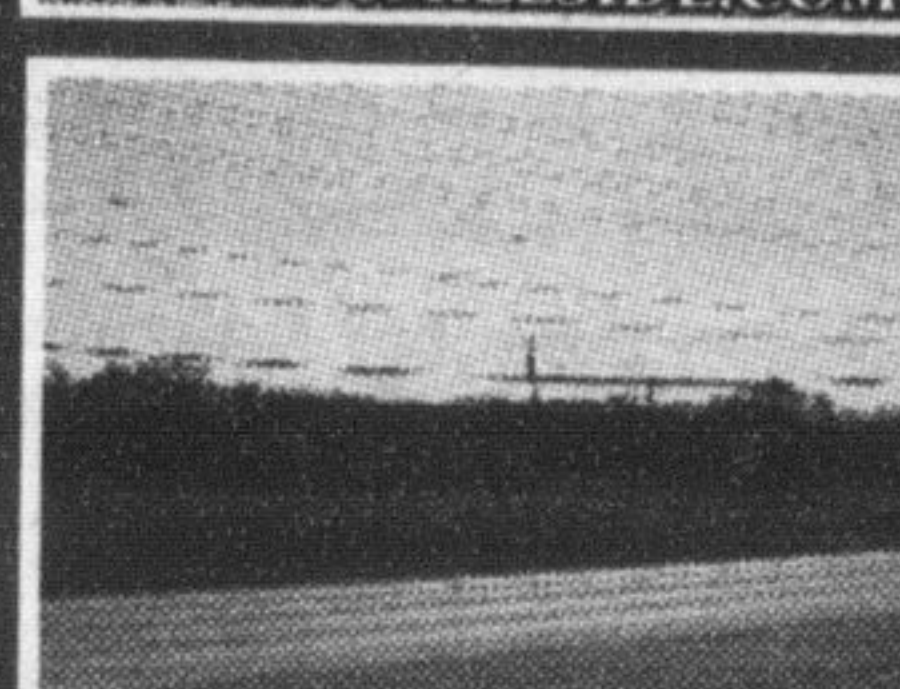
VILLAGE PARC ON THE POND

Beautiful 2 bedroom condo with views of the escarpment! Many Updates and Improvements include Oak Kitchen cabinets, Pergo flooring, newer broadloom, fresh painting recently done, Master bedroom with 5 piece ensuite bathroom, Ensuite laundry and storage/utility room. 2 Parking spaces - 1 underground/1 above ground. Conveniently located close to downtown Milton, shopping and local and GO transit. Amenities include Indoor salt water pool, hot tub, sauna, exercise room, guest suite and terrific social activities. Call today for a personal viewing. Offered at \$299,900.



NEW LISTING

WE ALSO HAVE AVAILABLE AT 100 MILLSIDE 7th floor apartment with beautiful view of downtown Milton. 2 bedroom very spacious unit. 2 parking spaces and two lockers, ensuite bathroom, ensuite laundry room. Offering a flexible or immediate closing. Call us to view.



VACANT COMMERCIAL LOT

...In the town of Milton Vacant lot 1.14 acres zoned M1 to build your business or to invest your \$. Call us for more information.

IF YOU WANT MARKET STATISTICS FOR YOUR NEIGHBOURHOOD, PLEASE CALL US OR EMAIL US FOR A FREE REPORT.