



The Canadian Champion

BEST HOMES

THE KEY TO YOUR NEW HOME!

ONLINE EDITION

www.miltoncanadianchampion.com

To advertise in this feature please call Diane ext. 212 at 905-878-2341 or email dianew@miltoncanadianchampion.com

Century 21
FINE HOMES & ESTATES

GoodaleMillerTeam

CENTURY 21 MILLER REAL ESTATE LTD. BROKERAGE

905-845-9180 • 1-888-462-4851 • GoodaleMillerTeam.com



Don Goodale
Sales Representative



Brad Miller
Broker



PRIVATE COUNTRY ESTATE - \$4,198,000

Gated custom built country estate of approx. 14 acres! Private, incredibly landscaped grounds with stream. Customized pool with hot tub, sand beach & auto retractable cover. Top notch finishings t/o the 10,000 square ft ranch! Indoor professional size basketball court & gym. Outdoor basket/volley ball/tennis court & putting/chipping green.



DEVELOPMENT POTENTIAL - \$1,498,000

Unique opportunity to own your own private 9 hole golf course on 16.5 incredibly manicured acres with a stream & towering evergreens! Lovely, updated, charming home steps to the Village of Carlisle, bordering enclave of "Tuckawye". Great access to 401. Build your estate home or potential to create lots.



EXQUISITE CENTURY HOME - \$1,600,000

Proudly situated on a double wide lot in the heart of "Old" Milton. This stunning 1892 Victorian home with nearly 4,000 sq. ft. has been taken into the 21st Century through extensive restoration. Wrap-around veranda, balcony, 10 ft. & 9 ft. ceilings, Pine floors throughout. 3 car Carriage House complete with 2nd floor studio. Beautifully landscaped. Pride of ownership is evident throughout.



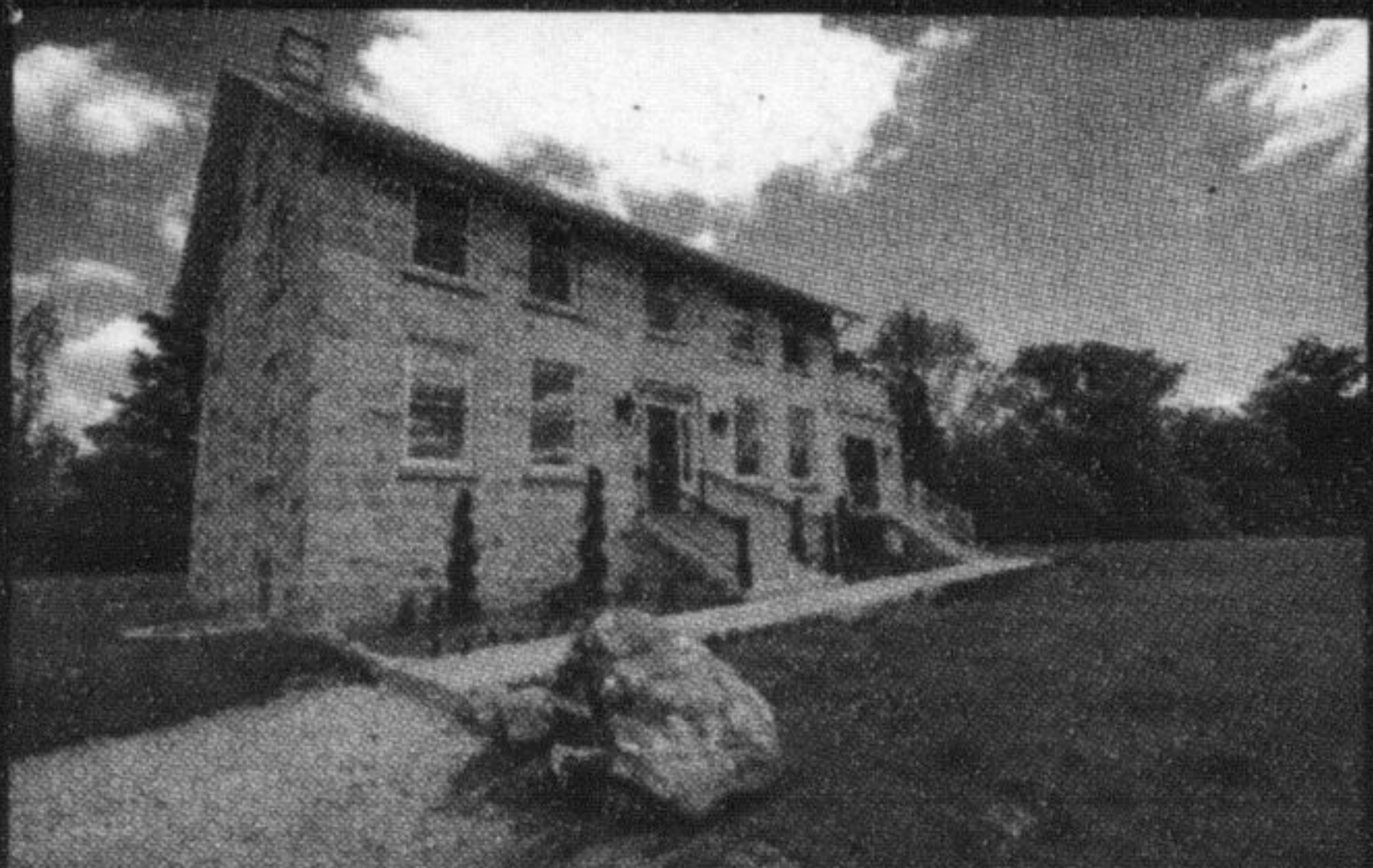
LOWVILLE CHARMER - \$899,000

Recently and extensively renovated family home offers all the luxuries of the city, but the tranquility of country life! Over 2,600 sq ft of open concept living space on approx 3 acres situated in the quaint Town of Lowville, complete with 6 stall stable and paddocks, surrounded by parklands!



MODERN LUXURY IN RURAL SETTING - \$2,195,000

Spectacular new custom built with soaring ceilings and fantastic windows all overlooking a private, professionally landscaped lot. Fabulous 2 storey foyer leads to 2 storey family room overlooking pool and gardens. Main floor MBR with luxurious ensuite and walkout to rear yard. Fully finished lower level. Great location offering quick hwy access & short commutes to Toronto and surrounding areas.



LUXURY LIVING MEETS FINE RESTORATION - \$2,650,000

Gorgeous c1850's home rebuilt stone by stone in 2008. Enjoy yesterday's charm with all of today's conveniences. Over 4700 sq ft of living space. Large principal rooms, custom kitchen with high end appliances, geothermal heating/cooling system, hardwood floors, two fireplaces. Master bedroom with ensuite plus private terrace overlooking 97 scenic acres. Just north of the 401 near Campbellville.



KATHERINE BARNETT RE/MAX

REALTY SPECIALISTS INC. BROKERAGE

Virtual Tours See www.katherinebarnett.com

OPEN HOUSE: Sunday 2-4pm, 620 Ferguson Drive, #75



\$287,000

FREEHOLD TOWNHOME END UNIT

Open concept kitchen and great room, walk out to private deck, upstairs laundry room, 5 appliances, central air, freshly painted throughout, large entrance foyer, shows very well, steps to schools and parks, \$287,000.

Not intended to solicit buyers or sellers currently under contract with another brokerage



\$389,990

ONE OF A KIND MATTAMY ASHBERRY

One of a Kind Mattamy Ashberry Model facing green space with view of Escarpment. 1585 sq ft, less than 1 year old. 40K spent on upgrades. Hardwood floors throughout. Premium granite counters in Kitchen with under mount sink, glass tile backsplash and Stainless Steel Kitchenaid appliances, 2 car garage and 15 X 19 Foot Deck off the Kitchen. Please see virtual tour for pictures.

Office 905-858-3434

CALL FOR YOUR COMPLIMENTARY MARKET EVALUATION. 22 YEARS OF PROVEN EXPERIENCE.

ERIK TAYLOR

SALES REPRESENTATIVE



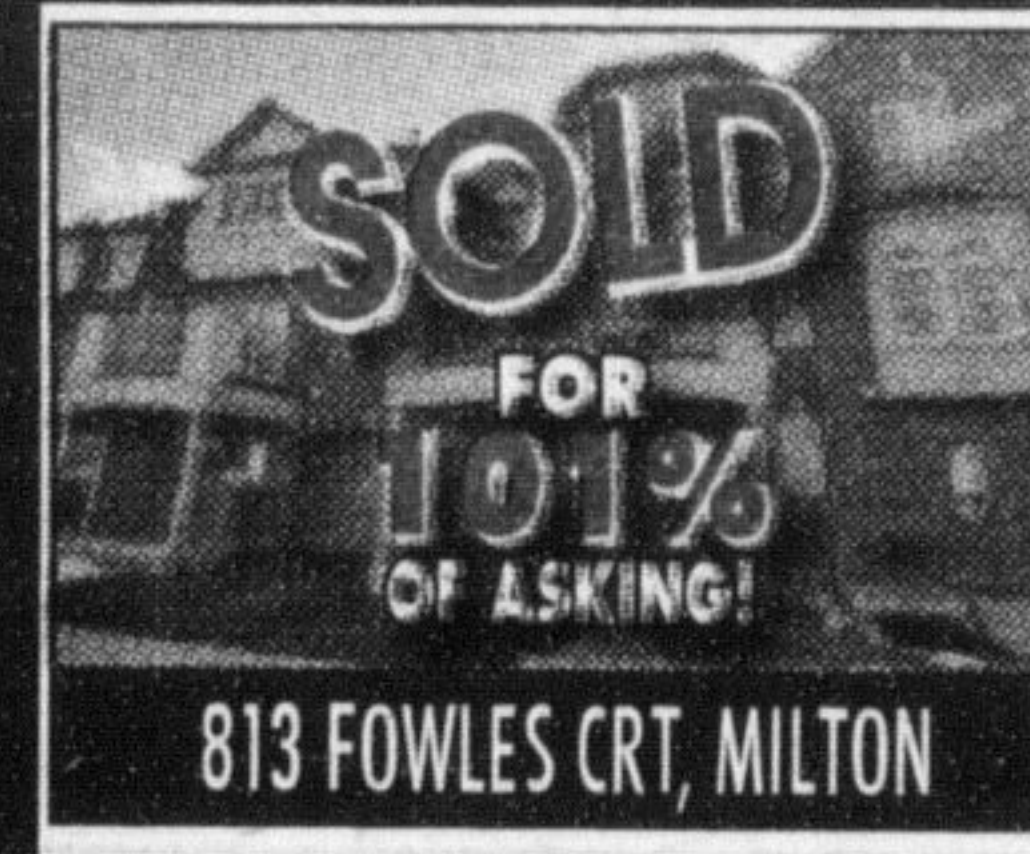
Win A Trip For Two to Punta Gorda

See website for details: www.eriktaylor.ca

ATTENTION SELLERS:

I have buyers looking to purchase a Detached Home, priced \$460,000 - \$520,000.

Call me today!



813 FOWLES CRT, MILTON

Gorgeous 2 Bedroom 3 Bathroom Freehold Town! (No Maintenance Fees!) Open Concept Mattamy Woodbine (Springdale) Model Energy Star Rated Townhouse W/ 1357 Sq Ft In The Demanded Hawthorne Village On The Escarpment. Stunning Foyer W/ Dark Ceramic Tile On A 45 Degree, Dark Hardwood Stairs W/ Square Pickets, Entertainer's Kitchen W/ Dark Wood Cabinets, Upgraded Black Appliances & Wrap Around Breakfast Bar. Walk In Closet & Master Ensuite. Enjoy Sunsets & Full Views Of The Escarpment From The Massive Terrace. Steps to Tennis Courts, Park, Walking Trails. Minutes To GO Transit and 401.

\$374,900



OPEN HOUSE: SAT & SUN 2-4PM 1209 BONIN CRES. MILTON

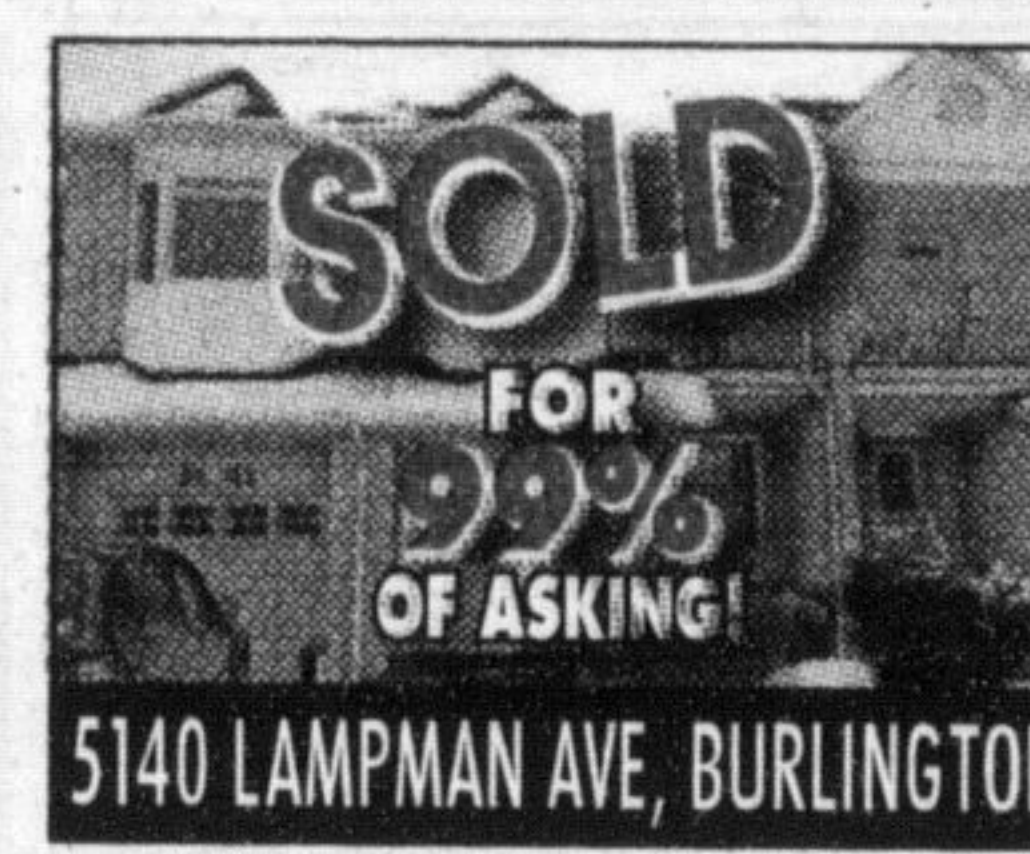
Immaculate 3 Bedroom Semi Detached Situated On A Quiet Street In Desired Area Of Milton. Over 1600 Square Feet, 9 Foot Ceilings, Hardwood Floors, Hardwood Stairs, Gas Fireplace W/ Gorgeous Corner Mantle. Master Is Oversized W/ Huge Walk In Closet & Luxurious Master Ensuite W/ Corner Soaker Tub & Separate Stand Up Shower. Beautifully Decorated Ready For You To Move In.

\$369,900



814 HEPBURN RD, MILTON

Beautiful Mattamy Brentgrove Model. Energy Star Rated 1500 Sq Ft 3 Bedroom Semi Detached Is Located In The Sought After Area Of Hawthorne Village. Features A Formal Dining Room, Large Open Concept Living Room & A Kitchen That's Fantastic For Entertaining. Upgrades Incl Bamboo Floors, Garage Entry, Glass Backsplash, Master Ensuite W/ Soaker Tub And Stand Up Shower, Cold Cellar And Upstairs Laundry W/ Upgraded Front Loading Washer & Dryer. Partly Fin Basement.



5140 LAMPMAN AVE, BURLINGTON

Stunning 3 Bedroom Freehold Town home! Bright Kitchen. Walk Out To Deck. Oversized Family Area, Brand New Carpet Throughout Home, Brand New Ceramic Floors In All Baths. Finished Basement w/ Berber Carpet, Stunning Ensuite W/ Soaker Tub & Stand Up Shower. Just Down The Road From Lampman Park And Easy Access To Schools, Parks And Other Amenities.

 724 HEPBURN RD FOR 101% OF ASKING!	 921 DEVERELL PL FOR 99% OF ASKING!	 309 TEEZEL DRIVE FOR 101.4% OF ASKING!	 898 HASSELFELDT HEIGHTS FOR 99.7% OF ASKING!	 279 WETENHALL LANDING FOR 100% OF ASKING!
 50 GLEAVE TERRACE FOR 99% OF ASKING!	 56 GLEAVE TERR FOR 99% OF ASKING!	 726 HEPBURN RD FOR 100.2% OF ASKING!	 228 PETTIGREW TR FOR 99% OF ASKING!	 466 DENYES WAY FOR 99% OF ASKING!

RE/MAX REALTY SPECIALISTS INC. BROKERAGE
Each office independently owned and operated.

OFFICE: (905) 828-3434
CELL: (647) 402-3066

BONUS!

All Real Estate Ads appear at...
www.miltoncanadianchampion.com