

**ROYAL LEPAGE**  
Meadowtowne Realty, Brokerage  
Independently Owned and Operated



**ROYAL LEPAGE ME**  
905-878-8101 475 MAIN ST.



With over **27** years of Real Estate sales experience we know how to make you our top priority.

Working together we are second to none.

**Carole D. Budworth\***  
905.864.9242  
www.carolebudworth.com



**Ingrid Hollinger\***  
416.822.5558  
www.ingridhollinger.com



**3030 Purdy Drive \$1,059,000.**

Great colonial-style home with dormers and exposed aggregate driveway. This home has 2 full kitchens with large eat-in areas, 6 bedrooms, 6 bathrooms, 6 walkouts to 1.5 acre landscaped back yard, games room, family room, great room, formal living room, and dining room. This wonderful home has so much to offer you just have to see it. Call Ingrid for your private showing.



*I'm Stoned...*

...by a mason in 1862. Set on a 1/2 acre. Ideal Country Inn & Bed & Breakfast. Cool in Summer and Cozy in the Winter. Like all Stone Homes I have Wide Plank Floors & Wide Window Sills. Perennial Gardens & Stately Trees. I'm not Ordinary, I'm Original. Call for your private showing. \$399,000. Call Ingrid. 416-822-5558.



**CENTURY HOME!**

*Dream Come True!*

Fabulous award winning, restored, 3 storey home in the heart of downtown Milton within easy walking distance of all amenities. Gorgeous perennial landscaping, pond, wrap around verandas. Exquisite dream kitchen, 3 fireplaces, 4 baths, 2nd st. laundry. Wonderfully finished 3rd storey. Think of the potential - in-law suite/nanny suite/ teenager's haven/bed and breakfast - all you could ask for and more. Call Carole for your personal guided tour. MLS# 2026084.



**EXECUTIVE HOME**

Super executive model home close to all commuting, shops, schools, parks, restaurants. Large, open concept home, gleaming hardwood floors, separate dining room, eat-in kitchen, pillars. Great room with gas fireplace, huge 2nd storey loft and computer niche. Offers everything you might want in a home. Includes all stainless steel appliances. Inviting front porch, double garage. Call Carole today for your viewing. MLS# 2027139.

*Harnden ~ Sedgwick ~ Marshall*



Together we serve you better!

**ROYAL LEPAGE**  
Meadowtowne Realty, Brokerage  
Independently Owned and Operated  
www.royallepage.ca

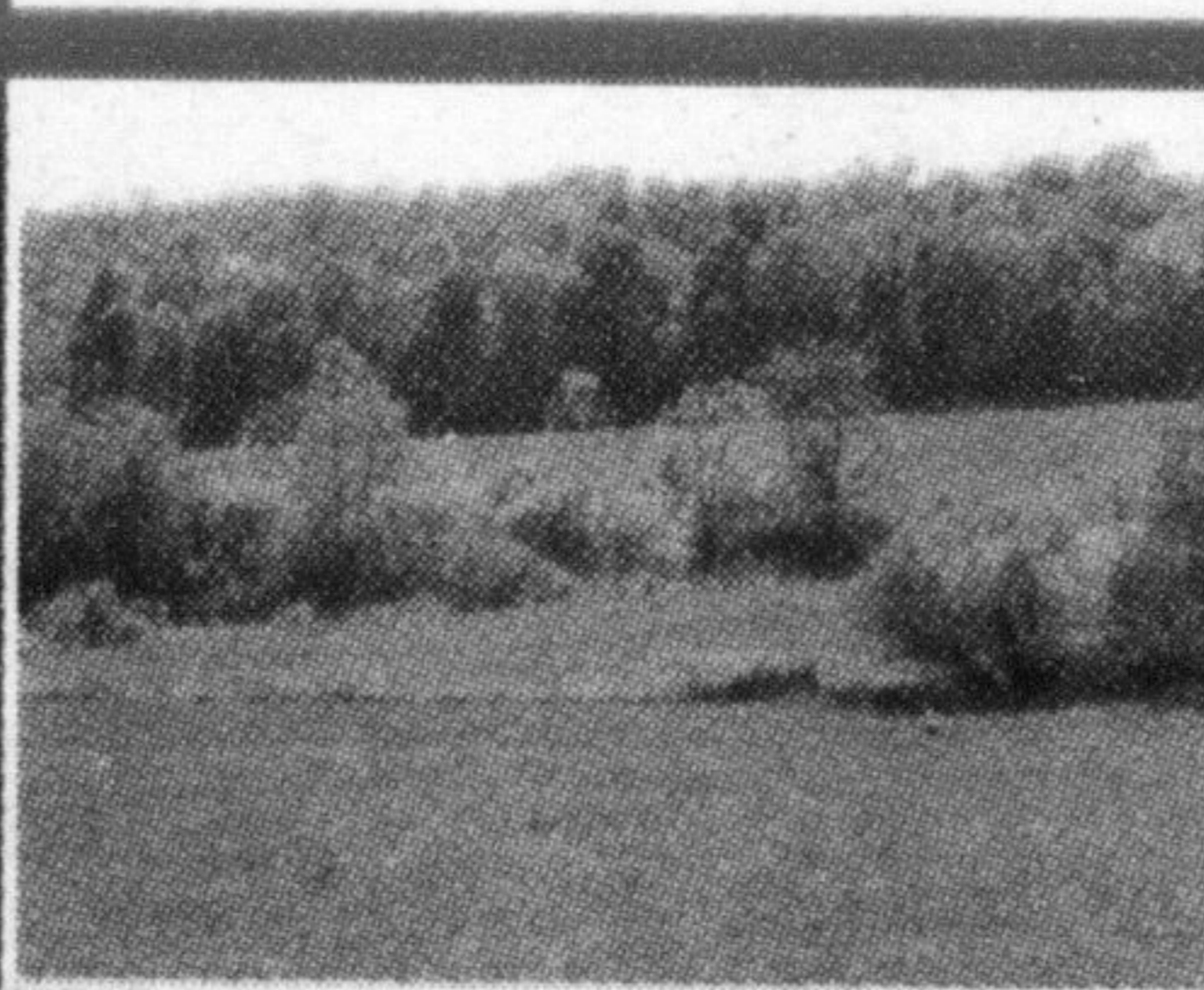
*Kim Harnden Mandy Sedgwick Mirella Marshall*  
Sales Representatives



**SOLD!**

**STUNNING CENTURY HOME**

Custom 4 bedroom, 2 1/2 bath Century home, set on a double lot in a new development with escarpment views. This is a rare unique offering with amazing quality finishes and luxurious upgrades throughout. The open plan layout is enhanced by the charm and character of some of the preserved features of this historic home. A perfect marriage of yesterday and today. You will not want to miss this one! For more information please call Mirella or Mandy 905-878-8101 **\$689,000**



**COUNTRY PARADISE**

Build your dream home on this beautiful 100 acres. Enjoy the peace and quiet, the scenic views and yet have the convenience of the nearby towns. Priced at \$797,500. For more info call Mirella 905-878-8101

Serving all your real estate needs...  
*Residential ~ Heritage ~ Country ~ Commercial*  
Office **905.878.8101** Toll Free **1.800.514.3316**



**Eva Gooding\***  
Sales Representative

Office **905-878-8101**  
Direct **905-691-2401**

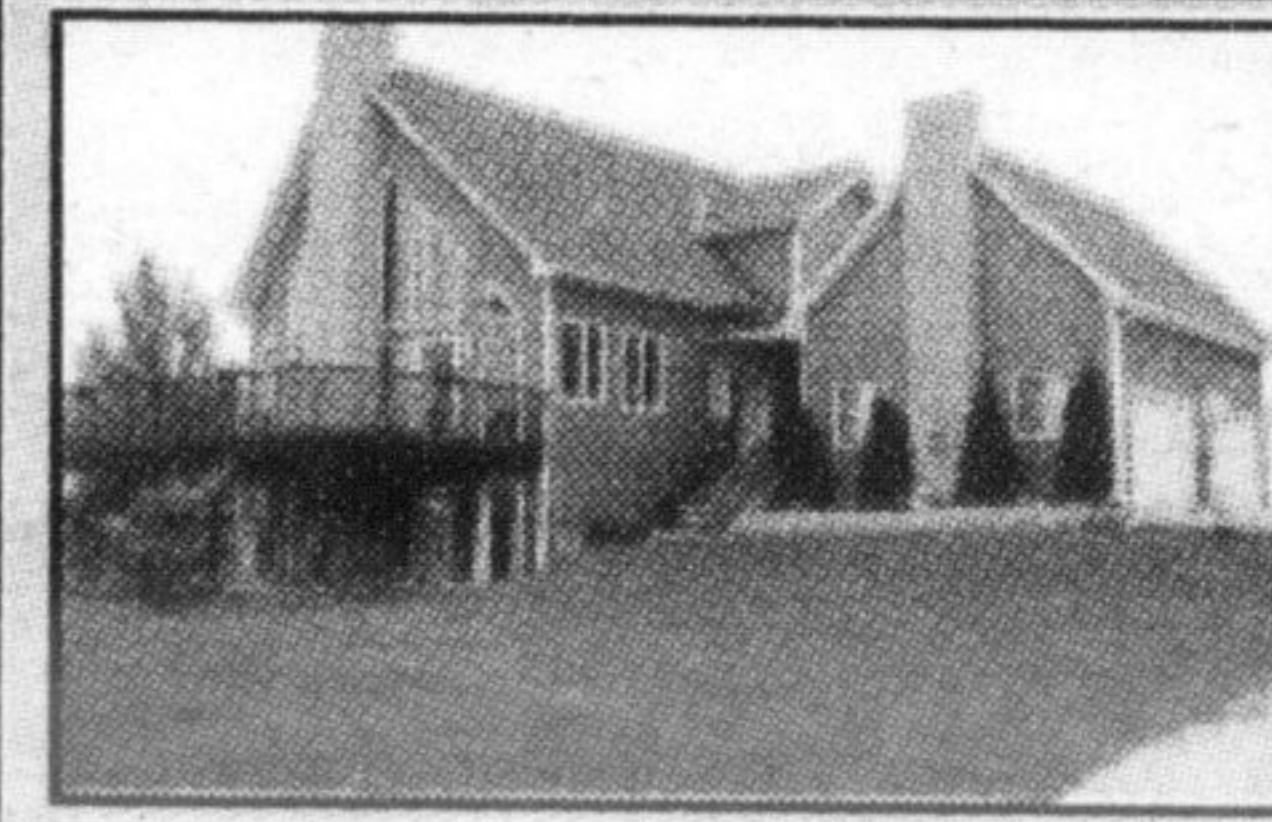
PRESIDENT'S GOLD AWARD



**SOLD**

**BRAND NEW, NEVER LIVED IN...**

Amongst Mattamy's new collection of homes designed to match the "spirit" of the times. Fresh and Beautiful. Great room adjacent to the amazing Kitchen with Quartz Counter Tops and Quartz Backsplash and Garden Doors. Separate Dining Room. Second Floor Family Room. Oak hardwood Staircase. Lovely Porch. Positioned in a Quiet corner of the neighbourhood. Listed at \$409,900. Call Eva Gooding to view.



**CHALET STYLE, ONE OF A KIND...**

Two storey with full loft. Panoramic views of the escarpment from every window. Prime location. House is set back from road on .93 of an acre. Several walkouts and decks, from all levels of the house, including the Master Bedroom walkout. Master Loft includes full 12 x 12 ensuite with King size Jacuzzi tub, stand up shower, huge sitting area or family room. Professionally reconditioned 16x24 self enclosed kayak pool, with decking and sitting area with Professional Landscaping. A Beautiful Home. Listed at \$647,000. Call Eva Gooding to view.



**DESIRABLE HAWTHORNE VILLAGE**

Sought after Hawthorne Village on the escarpment. Premium 36' wide lot, double garage, large front porch, all brick very appealing exterior, gorgeous home, double door front entry, gourmet style rich espresso cabinets and centre island in kitchen with top of the line appliances. Separate side entrance to basement with rough in for 3 piece bathroom, 2nd floor family and laundry room. Prime location, even more attractive with the upcoming Laurier University Campus close by. Listed at \$494,000. Call Eva Gooding to view.



**DOUBLE BRICK CENTURY HOME**

From the porch of this double brick century home you'll be introduced to both an exterior and interior showplace. 3 story's above ground plus finished lower level with separate entrance, 2 family rooms, 3 full bathrooms, cedar outbuilding with hydro. Close to Victoria Park. Listed at \$319,900. Call Eva Gooding to view.



**A house that FITS your family is my only concern**

No matter what's on your wish list, I will work hard to find a home that suits each and every member of your family. Call today to get your search started.



**Bright & Beautiful!**

Ashton 4' model on 45x105 foot lot by Thomasfield Homes. Extended build makes house almost 2000 sq ft. Upgrades include main floor den, large & extra deep ensuite tub, gorgeous landscaped exterior w/interlocking patio and driveway. Finished basement includes guest suite & 3 pc bath, large rec room w/ gas fireplace and more-don't miss this one!

**6 Acre Escarpment Lot!**  
NOW AVAILABLE  
**NEW PRICE \$525,000**  
Perfect for building your custom home!!  
Call me today for more details. 905-876-7979

**Chris Lightfoot**  
Sales Representative  
Direct  
905-876-7979  
905-878-8101  
www.chrislightfoot.ca

**ROYAL LEPAGE**  
Meadowtowne Realty, Brokerage  
Independently Owned and Operated



**REAL ESTATE WITH REAL RESULTS.**



**Kim Coulter\***  
Sales Representative

905-691-1148  
Direct Line



**CORNER LOT - SIDE SPLIT**

Pretty 3 level side split in mature neighborhood with 3 bedrooms and finished basement. Recently renovated open concept kitchen/dining. Updates include roof (06), replacement windows. Hardwood under broadloom. Lower level has rec room with gas fireplace.

**\$358,900**

**Looking for a Westmoreland or Lexington for qualified buyer. Prefer summer closing.**

Call **KIM COULTER** at 905-691-1148

*Let Our Experience Guide You*

Whether you are looking to sell or buy a home, call us for guidance!

**Adina Nonis**

Adina Nonis  
Sales Representative  
Direct: 416.721.1311  
adinanonis@royallepage.ca

**Angel Lyons**

Angel Lyons  
Sales Representative  
Direct: 905.691.6147  
angellyons@royallepage.ca

**PROUD SPONSORS OF THE WOMEN'S SHELTER FOUNDATION**



**NEW LISTING**

**VILLAGE PARC ON THE POND**

Beautiful 2 bedroom condo with views of the escarpment! Many Updates and Improvements include Oak Kitchen cabinets, Pergo flooring, newer broadloom, fresh painting recently done. Master bedroom with 5 piece ensuite bathroom. Ensuite laundry and storage utility room. 2 Parking spaces - 1 underground/1 above ground. Conveniently located close to downtown Milton, shopping and local and GO transit. Amenities include Indoor salt water pool, hot tub, sauna, exercise room, guest suite and terrific social activities. Call today for a personal viewing. Offered at \$299,900.

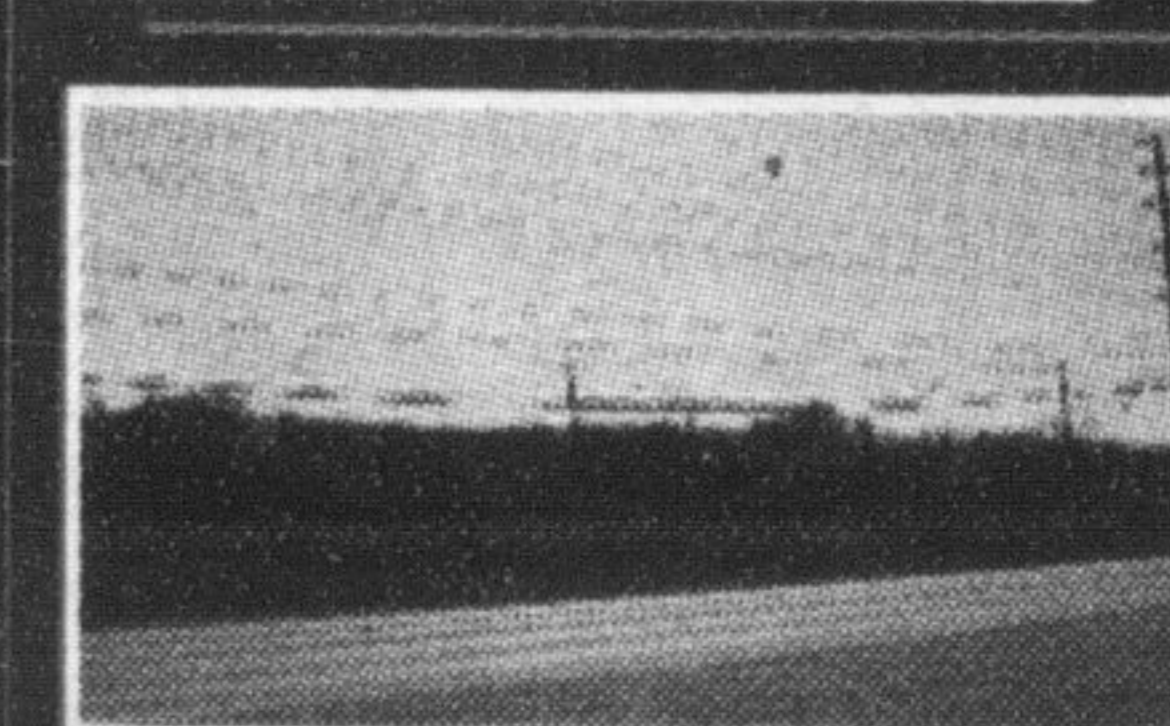
**NEW LISTING**  
**WE ALSO HAVE AVAILABLE AT 100 MILLSIDE**

7th floor apartment with beautiful view of downtown Milton. 2 bedroom very spacious unit. 2 parking spaces and two lockers, ensuite bathroom, ensuite laundry room. Offering a flexible or immediate closing. Call us to view.



**FOR LEASE!**

One bdrm Apartment for rent on Main St. Lovely spacious one bedroom with view of downtown steps from shops, restaurants and transit. 10 foot ceilings, large windows for natural light plus a skylight in kitchen. Outdoor patio to barbeque and lounge on a sunny lazy day. Laundry facility on site call us to view.



**VACANT COMMERCIAL LOT**

...In the town of Milton Vacant lot 1.14 acres zoned M1 to build your business or to invest your \$. Call us for more information.

IF YOU WANT MARKET STATISTICS FOR YOUR NEIGHBOURHOOD, PLEASE CALL US OR EMAIL US FOR A FREE REPORT.