

ROYAL LEPAGE
Meadowtowne Realty, Brokerage
Independently Owned and Operated



ROYAL LEPAGE
MEADOWTOWNE REALTY

905-878-8101
475 MAIN ST. E., MILTON
www.meadowtowne.com



7RE • CANADIAN CHAMPION Tuesday, March 29, 2011

ROYAL LEPAGE
Meadowtowne Realty, Brokerage
Independently Owned and Operated

REALTOR WANTED

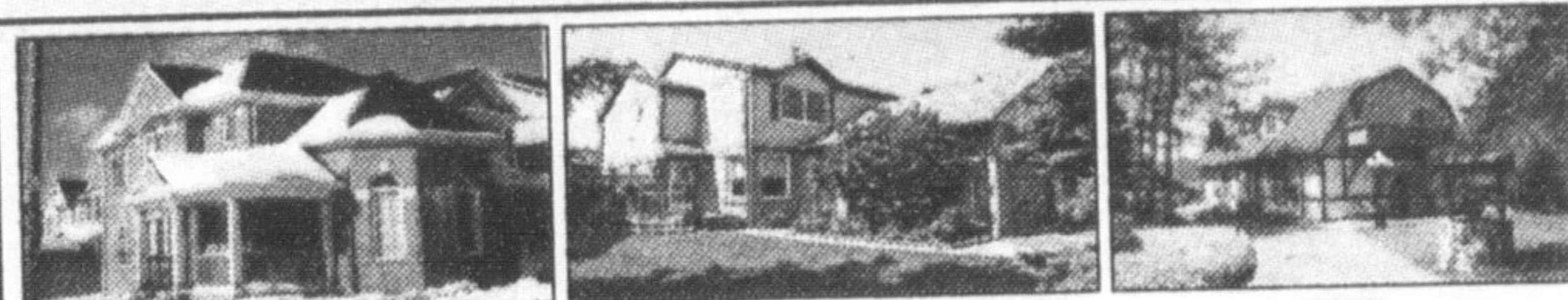
Real Estate Team seeks sales partner.

No Cold-Calling.
All Appointments & Leads Supplied.
Make \$100,000+/1st year.
All expenses paid including cell phone!

More info available, email request to:
charltonclientcare@gmail.com



Chuck & Melissa Charlton, Sales Representatives
Royal LePage Meadowtowne Realty, Brokerage
"The Charlton Advantage Team"



"Sell Your House In Less Than 60 Days Guaranteed!"

Milton - If you're going to be selling your house in the next 3 to 6 months, this is the information you need now to give you an unfair advantage over the competition.

You get everything you need to know in this FREE 16-page Report.

Learn the proven secrets to selling your house in less than 60 days guaranteed.

To get a free copy of the guide just call **1-800-438-2910** ext. 5053# for a 24-hour free recorded message or visit **FreeTopDollarBook.com**.

Chuck & Melissa Charlton, Sales Representatives, Royal LePage Meadowtowne Realty, Brokerage 905-878-8101



ABSOLUTELY GORGEOUS updated home



\$514,000

on quiet family street backing onto shell park. Formal LR/DR w/floor to ceiling bay windows. The sunken family rm has hwd, gas FP, patio doors to deck.



Call **Tim Gerrior**
sales representative
Direct: **905-691-1662**
Office: 905-878-8101
Email: tim@timgerrior.com

ROYAL LEPAGE
Meadowtowne Realty, Brokerage
Independently Owned and Operated
Your **SMART** Realtor



* SALES REPRESENTATIVE ** BROKER

Four faucets in four styles for your home

by Homer Westwood

(NC)—My guess is that when homeowners select faucets style, it is not necessarily at the top of their minds. I suspect that function would come first: One spout or two spouts? Monoblock or widespread? With spray or without? Chrome or bronze?

Yet every faucet has a style of its own, and I hope I can demonstrate it to you with this small selection of newly-introduced models, two from American Standard, two from Jado. One is for bathrooms, the other three for kitchens.

American Standard Portsmouth Collection

No doubt about this, it's clearly in traditional style. The fine detailing, that hand-made look, is at the core of traditional. The look is grounded in the sumptuous designs of the Victorian Age, but is by no means a historical replica: that might be too much for modern sensibilities. The words lavish and luxurious apply.

The Portsmouth Collection is extensive, with a choice of handles, monoblock or centreset, for tubs and basins in chrome, satin nickel and blackened bronze finish. If you really cherish the old time look, try the oil-rubbed bronze finish, with muted hues and copper highlights.

Jado Cayenne

I'd tag this as casual style. It's simple, straightforward, unostentatious. The high-arched shape is an acknowledgment of its function as a sink faucet, swivelling from side to side and providing a pull-out spray for washing down the sink, rinsing the pasta pot and other chores.

Major appliances usually have a timeless, uncomplicated style; Cayenne will complement them nicely. In polished chrome, brushed nickel and ultra steel.

American Standard Collina Collection

Only one name for this: modern. It's uncompromisingly modern. No frills, no decorations, it's all business. That doesn't mean it can't look good: Collina complies with the old Art and Crafts principle that nothing should be brought into a house that isn't both beautiful and useful.

On the functional side, the spout swivels, there's an extra long pull-out spray, and a tri-light indicator at the spout shows the water temperature by its colour. There are two other models, one with and the other without the pull-out spray. Finishes are polished chrome or stainless steel.

Jado Coriander

I'm going to play my get-out-of-jail-free card here. I'll call this style eclectic. That's as good as saying "anything goes" style. In the home it means a highly personal mish-mash of colours, patterns and materials. Here, what we have is a 100% functional hardworking faucet from a professional kitchen, hardly prettied up at all.

The spout swivels, the two-function pull-out spray has a built-in activation button, water and temperature control is by a single joystick. In polished chrome, brushed nickel and ultra steel.

One thing these four faucets share that we can't see here is a pre-assembled drain unit called speed connect. It gives a watertight connection in no time at all. What style is that? I'd call it consumer friendly.

You can find out more about American Standard and Jado faucets at american-standard.ca.

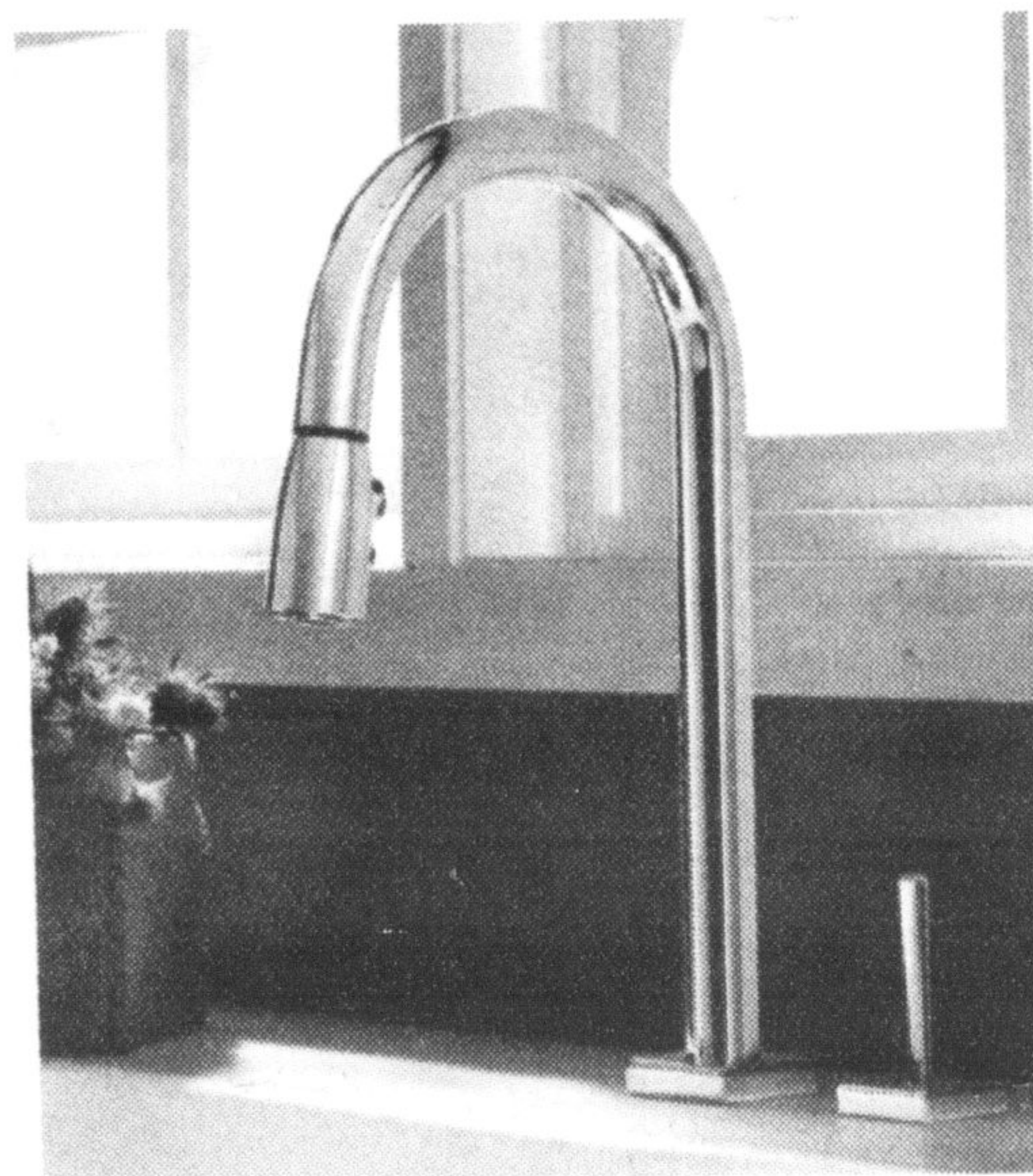
www.newscanada.com



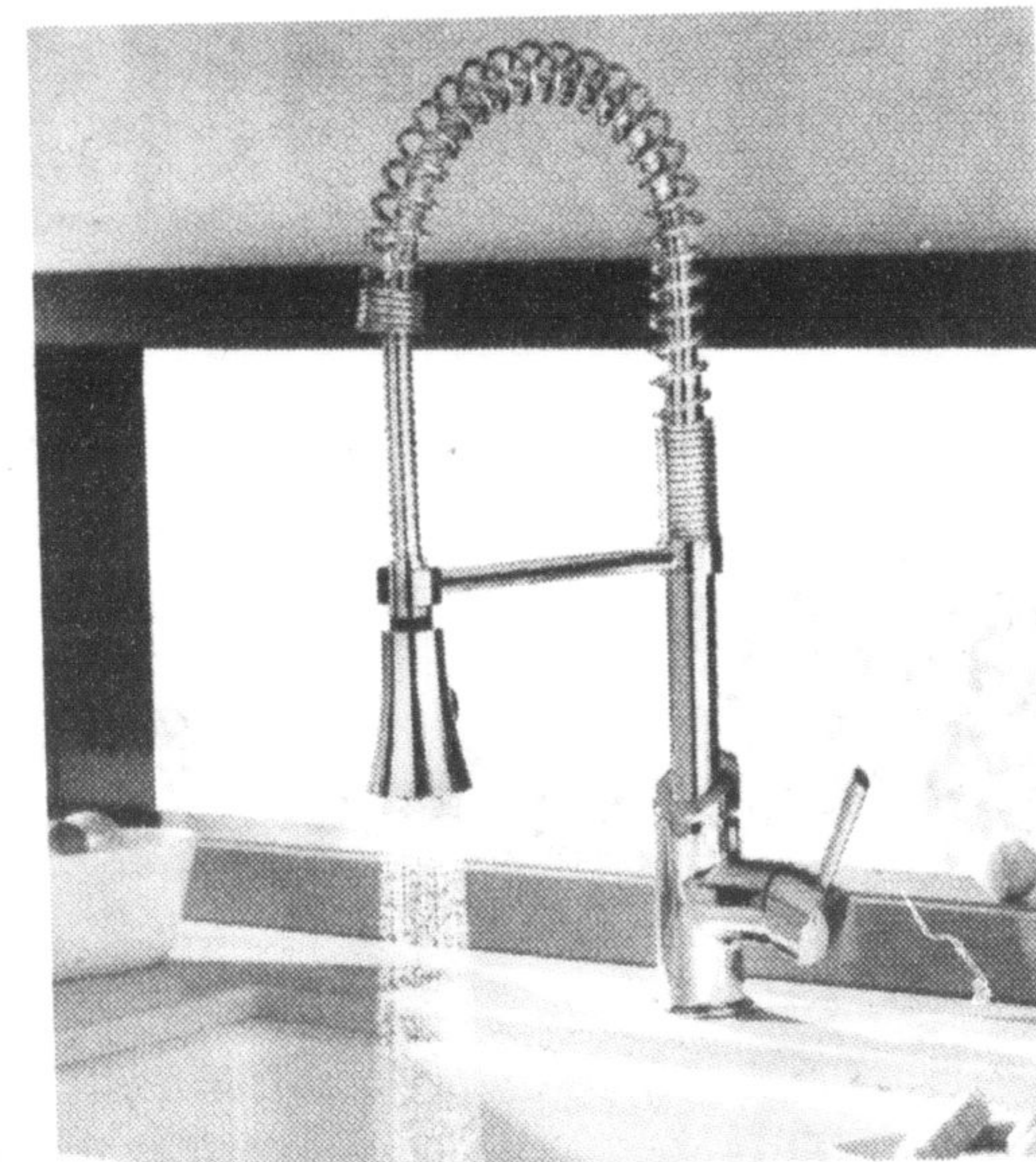
Portsmouth - The delight is in the detail. American Standard Portsmouth Collection delivers 21st century performance in traditional style.



Collina - Modern elegance with high performance extras. American Standard Collina Collection features a long-reach spray and visual indication of water temperature.



Cayenne - Got high-end kitchen appliances? Here's another - Jado Cayenne with pull-out spray, single joystick control, and the casual look you love.



Coriander - An eclectic style that's all muscle. Jado Coriander is big where it matters: wide swivel, dual function spray and a techno look.