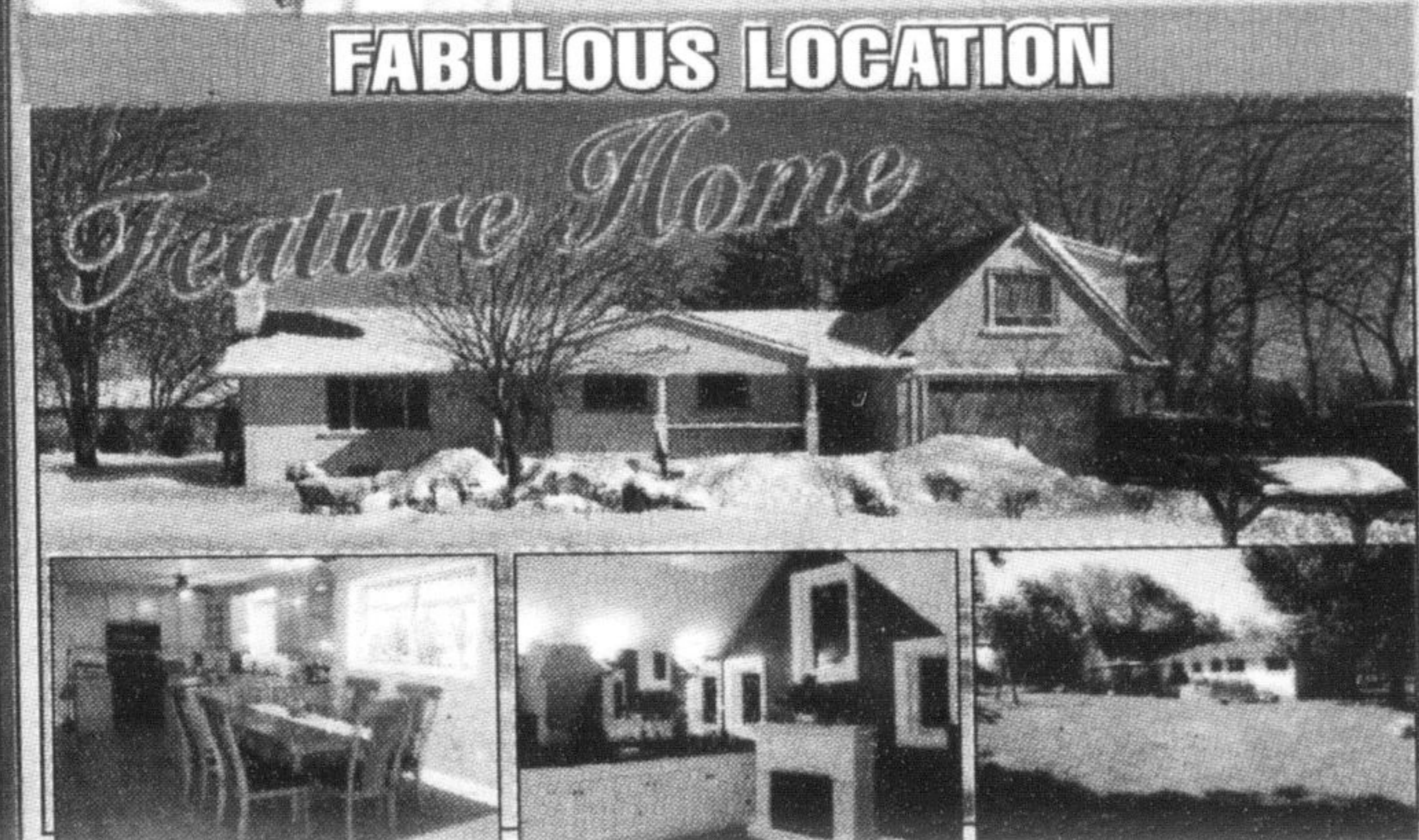




Kim Scott *
Sales Representative
878-8101
kimscott@royallepage.ca

Director's PLATINUM Award 2007
AWARD OF EXCELLENCE



This home has something for everyone starting with a fantastic location with quick and easy access to Milton, 401, 407, and 403. Fabulous master retreat with fireplace, walk in closet, sitting room and ensuite with fireplace, double sinks, jetted tub & separate shower. There are 3 other bedrooms, another of which has a full ensuite and a walk in closet. Large family sized eat in kitchen opens to the great room. Basement is finished with games room with wet bar and cozy rec room with gas fireplace. The garage is an oversized double which parks 3 cars and has an oversized door. Lots of parking on the drive, landscaping, above ground pool and play gym for the kids in the backyard. Everything is done in this lovely home in a pretty country setting. \$729,900.

Congratulations Mike, Carrie, Christina and Max!

Pat Rideout
SALES REPRESENTATIVE 905-878-8101
email: PatR@RoyalLePage.ca
www.patrideout.ca

AWARD OF EXCELLENCE 2010
Member of the Oakville-Milton, Toronto and Hamilton-Burlington Real Estate Boards



DRURY PARK GEM

One of the larger models, this home features a double garage and lots of upgrades. Large foyer welcomes you to this lovely home. Main floor is very open concept - perfect for entertaining and boasts hardwood floors in the LR and DR and a gas fireplace. Main floor laundry for convenience. This model has a loft with a guest bedroom and full 4pc ensuite. Huge deck and backs onto the walkway. A must see. \$422,900.

Have APPROVED BUYERS for a

- bungalow in Old Milton
- 4 bedroom with a pool in Timberlea
- Robert St. townhouse

CALL OR EMAIL PAT FOR DETAILS
905-878-8101
email: PatR@RoyalLePage.ca

EXPECT THE *Royal Treatment*

Let Our Experience Guide You
Whether you are looking to sell or buy a home, call us for guidance!

Adina Nonis Angel Lyons
Sales Representatives
905-878-8101

adinanonis@royallepage.ca angellyons@royallepage.ca

PROUD SPONSORS OF THE WOMEN'S SHELTER FOUNDATION

NEW LISTING - GATED COMMUNITY IN BRAMPTON WITH AMAZING AMENITIES

www.rosedalevillageforsale.com
or scan this QR code with your smartphone for details.

NICELY RENOVATED

Nicely renovated 3 bedroom townhome. The big ticket items all taken care of - New Eat in Kitchen (2010), Updated bathrooms (2010), Furnace and Central air (2009), 100 Amp Service Breakers, Laminate and Ceramic flooring, Partially finished basement, Extra long driveway will fit 3 cars. All appliances included. Move in condition. \$235,900. Please visit www.30heslop.com for more details.

ELEGANT VANDERWOOD MATAMY BY THE ESCARPMENT

on a child friendly street w/ walking distance to schools and parks Rich dark Hdwd, granite counters & much more visit at www.myvisualhomes.com/adinanonis call us to view.

GREAT INVESTMENT PROPERTY MINUTES TO MILTON!

2 ACRE PARCEL BACKING ONTO 16 MILL CREEK. LOCATED MINUTES TO MILTON, 401 AND 407.

Spacious two story home w/barn, workshop, garage, 4 horse stalls w/att. open pen. Fantastic for hobby farm, home based business or a bed & breakfast.

Call us to view and visit our virtual tour at www.myvisualhomes.com/adinanonis.

IF YOU WANT MARKET STATISTICS FOR YOUR NEIGHBOURHOOD, PLEASE CALL US OR EMAIL US FOR A FREE REPORT.

Kim Coulter *
Sales Representative
905-691-1148
Direct Line

Director's PLATINUM Award 2006 Master SALES Award 2005

WOW! WHAT A PRICE!

Excellent opportunity! Townhouse in Dorset Park backing onto quiet park, close to school and GO - needs TLC. 3 bedrooms, 2 full bathrooms, finished basement, gas fireplace.

\$208,900

TIMBERLEA TREASURE!

Amazing 50' X 152' Lot with Inground Pool and Fruit Trees Galore! 4+2 Bedrooms, 3.5 Bathrooms, Main Floor Family Room with F/P, Main Floor Laundry, Double Garage. Many updates!

\$479,900

INVESTMENT!

Steeles & Trafalgar Rd - 0.43 acre residential property with some commercial uses allowed - high traffic - great exposure - call agent for details. 3 + 2 bedrooms, 2 bathrooms, complete new kitchen including new appliances, new ceramics throughout main floor.

\$424,900

Call **KIM COULTER** at 905-691-1148

Top 1% in Canada again for 2010.
THE BRAZEAU TEAM
WWW.BRAZEAUTEAM.COM

905-878-8101

Joseph Brazeau, B.A.*
Virginia Brazeau*
Jodie Near, B.A.*

MATTAMY BUILT & ENERGY STAR CERTIFIED

Open concept 2 bdrm, freehold townhome "Ashfield" model (1051 sq ft). Combine LR/DR. Kitchen with breakfast bar and walk out to balcony. Spacious master bedroom with walk in closet. Access from garage to foyer and ground level laundry.

\$274,000 MILTON

BEAUTIFUL 40 ACRES

Surround this "Board & Batton" Farmhouse. Large "Country Kitchen". Wrap around verandah to sit & enjoy the Vista of beautiful gardens, vast lawns & mature trees, 2 ponds. The home is situated in the centre of the property w a long lane access. Walking paths, open fields can be pasture/paddocks. Quick access to Hwy 6 & 401.

\$898,000 FLAMBOROUGH

CUSTOM FAMILY HOME

3600 sq ft plus fin LL. Large kit w/sep. brfst area. Formal LR w/F/P. Sep DR. Mn fr office has built in cabinets. Scarlet O'Hara staircase leads to the second level leads to a large mstr suite w/ closet and ensuite w/2prsn jetted soaker tub. 2nd flr laundry. 2 Additional bdrms each with sitting/study areas. Finished lower level rec room, an additional bedroom and 3 pce bath. Walk up from the storage/utility room to lg attached 2 car garage. This beautiful home is set back from road on a mature, private 1.7 Acre lot. Separate 1210 square foot garage/workshop for the hobbyist. Ideally located just minutes from downtown Milton.

\$774,000 MILTON

ALL BRICK BUNGALOW

Charming 3 bdrm, all brick bungalow on 150' x 150' lot. Pine kitchen cabinets. Hdwd on main floor. Partially finished basement w/huge Rec Room & woodstove. 36 ft x 26 ft detached garage/workshop. Enclosed sun porch 16 x 12.5 ft. Minutes from Milton & Oakville.

\$439,000 MILTON

APPROX 58 ACRE HOBBY FARM

Nestled between Georgetown and Milton. Stately 2 storey, brick farmhouse set back from road with 4 bdrms., eat in kit., separate living/diningroom. Main floor familyroom and sunroom. A large barn and oversized driveway are a few of the outbuildings. Rolling lands with spring fed creek. Quick access to 401. Rare Opportunity at this price.

\$1,398,000 HALTON HILLS

For further information and photos on these properties please visit **BrazeauTeam.com**

* SALES REPRESENTATIVE ** BROKER