

Dateline

Dateline is a free listing for local charitable and non-profit community groups to help promote their coming events. We guarantee one issue of publicity for each event although more insertions are possible if space permits.

Dateline notices should be emailed to editorial@miltoncanadianchampion.com. The final deadline is noon Friday for Tuesday's edition and noon Tuesday for Thursday's edition. Dateline items won't be accepted by telephone.

Wednesday Feb. 16

The free 'Advances in Cardiac Care in our Community' seminar featuring Dr. Michael Heffernan, cardiologist, takes place at Southside Community Church, 7480 Derry Rd. The event is presented by Halton Healthcare Services in partnership with the Heart and Stroke Foundation of Ontario. For more information, call (905) 878-2383, ext. 4379, or email healthpromotion@halton-healthcare.on.ca.

The Milton Christian Ladies Coffee Hour is held from 9:30 to 11 a.m. at Milton Gospel Hall, 306 Ontario St. N. The special feature is 'Gifts from the Heart' and the guest speaker is Marlene Gunning. For more information, call Alma at (905) 878-6345.

Milton Meals on Wheels holds its Wheels to Meals lunch program for seniors at 11:30 a.m. at the apartment building at 80 Ontario St. For more information, call (905) 878-6699.

Milton District Hospital holds a prenatal breastfeeding class for expectant mothers and their partners from 7 to 9 p.m. The cost is \$45. To register, call Jill Hicks at (905) 878-2383, ext. 7610.

Milton District Hospital holds a one-on-one breastfeeding clinic with a certified lactation consultant from noon to 4 p.m. To make an appointment, call Jill Hicks at (905) 878-2383, ext. 7610.

The Deck youth drop-in centre, 200 Main St. E. (rear entrance), is open from 3 to 5:45 p.m. for all ages. Visit www.yfcmilton.com.

The Milton Seniors' Activity Centre, 500 Childs Dr., holds billiards from 9 a.m. to 9 p.m., contract bridge from 9:15 to 11:30 a.m., evening bingo from 7 to 9 p.m., and conversational French from 1:30 to 3 p.m. Each activity costs \$2 for members and \$4.25 for non-members. Its weekly lunch counter is also held, featuring a hot meal for \$8. Sign up at the reception desk in advance or call the centre at (905) 875-1681. And the Milton Leisure Centre, 1100 Main St. E., holds drop-in volleyball from 1:30 to 2:30 p.m. at a cost of \$3.50. Call (905) 875-7946.

Thursday Feb. 17

The Milton Historical Society meets at Waldie's Blacksmith Shop, 16 James St., at 8 p.m. Doors open at 7:30 p.m. Local historian Jim Dills presents 'Milton's Traveling

Man,' a talk on Sam Paton. Everyone is welcome.

The John Howard Society of Peel-Halton-Dufferin holds registration from now until March 11 for its YO! (Youth Options) March Break program, which runs March 14 to 18 for teens aged 12 to 17. It features free daily workshops in Milton from 10 a.m. and 2 p.m., which focus on issues including employment readiness and peer pressure. There is also a chance to play Nintendo Wii, have lunch and meet friends. To register, call (905) 864-1306 or stop by 193 Main St. E.

The Deck youth drop-in centre, 200 Main St. E. (rear entrance), is open from 3 to 8:45 p.m. for all ages. Visit www.yfcmilton.com.

The Milton Seniors' Activity Centre, 500 Childs Dr., holds billiards from 9 a.m. to 9 p.m., line dancing from 10 to 11:30 a.m., guitar club from 10 to 11:30 a.m., contract bridge from 1 to 3:30 p.m., Thursday Afternoon Movie from 1:30 to 3:30 p.m. featuring Mother and Child, and table tennis from 7:30 to 9:30 p.m. Each activity costs \$2 for members and \$4.25 for non-members. The folk art drop-in is held from 1 to 4 p.m., and pickleball from 2:30 to 3:30. Bid euchre is held from 1:30 to 4 p.m. The cost is \$2.50 for members and \$4.50 for non-members. A foot care clinic is also held. The cost is \$25, paid to the nurse. To book an appointment,

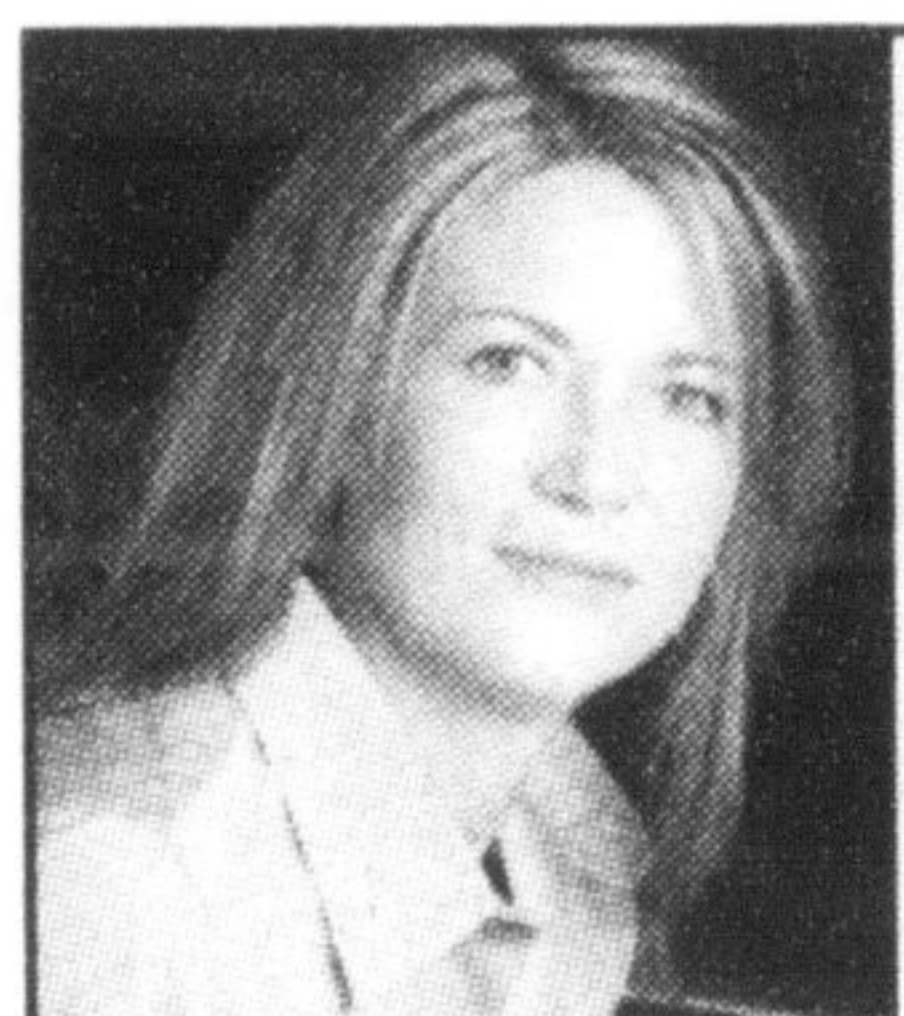
call the centre at the number above.

Friday Feb. 18

Milton District Hospital holds a drop-in breastfeeding group with a certified lactation consultant from 10 to 11:30 a.m. at Our Lady of Victory School, 540 Commercial St., with information shared and babies weighed. Pregnant women are welcome. Call Jill Hicks at (905) 878-2383, ext. 7610.

The Deck youth drop-in centre, 200 Main St. E. (rear entrance), is open from 3 to 10:45 p.m. for all ages with parental permission to stay late required for kids in Grades 6 to 8. Visit www.yfcmilton.com.

The Milton Seniors' Activity Centre, 500 Childs Dr., holds billiards from 9 a.m. to 4 p.m., tai chi from 9 to 10:30 a.m., bingo from 9:30 a.m. to noon, contract bridge from 9:30 a.m. to noon, CyberCafé from 1 to 3 p.m. and euchre from 1:30 to 4 p.m. Each activity costs \$2 for members and \$4.25 for non-members. Friday Evening Movie runs from 7 to 10 p.m. featuring Catfish. The cost is \$2. And bid euchre takes place at the Campbellville Lions Hall from 7:30 to 10 p.m. for \$3. The monthly computer club meeting runs from 1 to 3 p.m. and costs \$3 for members and \$5 for non-members. For more information, call (905) 875-1681.



Tish Wilson, Agent
201 - 10220 Derry Rd E,
Milton ON L9T 7J3
tish_wilson@cooperators.ca
(905) 864-6900

Whether your goal is to protect your home, your vehicle or your family's financial future, you can count on us for the right coverage - designed to fit your needs. For exceptional service, and friendly knowledgeable advice, give Tish a call today.



A Better Place For You™

Largest 100% Canadian multi-product insurer.

Home | Auto | Life | Investments | Group | Business | Farm | Travel



Hibbert & Associates
Foot Clinic



- Ingrown Nails
- Callous/Corns
- Dry Cracked Heels
- Warts
- Crooked Toes

- Flat Feet
- Heel Spurs
- Surgery
- Diabetic Foot Care
- Custom Orthotics

PRACTICING
IN MILTON
FOR OVER
12 YEARS!



6990 Derry Rd., Milton • 905-876-1132

www.miltonfootclinic.ca

NO REFERRALS NECESSARY • SATURDAY APPOINTMENTS AVAILABLE

Take A Step in the Right Direction. Visit a Chiropodist



"DATELINE DRURY"

Takara Wong

Hey Guys! Sorry for the long wait, hope you're enjoying the cold winter. We're not.

Jokes aside the New Year hasn't been eventful so far, little tid bits here and there but nothing to account for. On second thought there is a huge meteorite coming down from space estimated to be in contact with our earth in about a week. Oh sorry, that's just a part of a book I'm reading.

To start off with, students can look forward to the upcoming extravaganza which will be a joint presentation of the Glee club and Global Council at the beginning of March. At press time, the event remains a surprise- check back for more updates.

Another upcoming event, strictly for the grade 10's is the mock literacy test on February 23rd, designed to offer practice to all students preparing for the EQAO test on March 31st.

Also, this coming Wednesday the 16th,

we students have the upmost pleasure of not having to be at school until 10pm. as teachers are engaged in a PD session related to movement issues for the new school. E.C Drury staff will be packing materials and supplies which will have to be moved to the new school, which is scheduled to open September 2012. This preparation will be an ongoing process for next year. Aside from the move, the atmosphere at E.C Drury has been full of love as high school sweethearts plan their events for Valentine's Day. The lovebirds have been trying on dresses and suits for the upcoming Semi Formal which will take place on February 17th, at the Grand Chalet. Soon to follow that will be a day of celebration for families, which will be on February 21st. Family Day, where students will have the day off to spend time with their families. Until then, keep your fingers crossed for safety as the meteorite is coming closer and closer, as you read this, it is even closer.

E.C. DRURY HIGH SCHOOL