

ROYAL LEPAGE
Meadowtowne Realty, Brokerage
Independently Owned and Operated



ROYAL LEPAGE
905-878-8101
475 MAIN ST.



Carole D. Budworth*
Sales Representative
905-878-8101



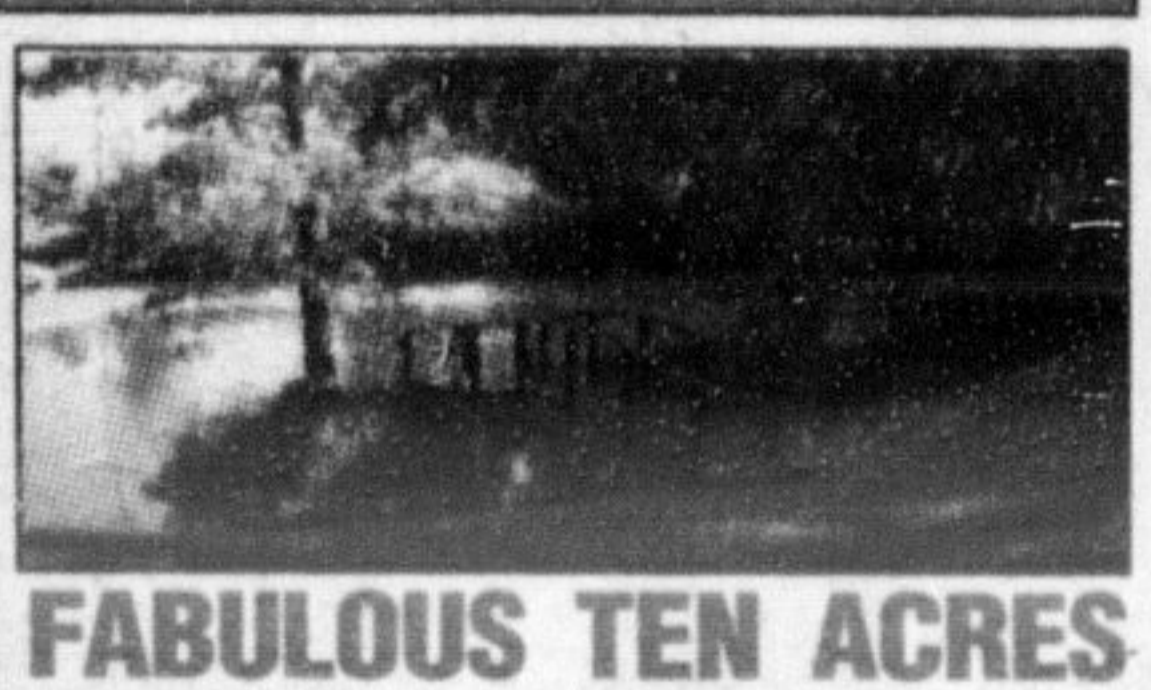
Honest. Professional. Trustworthy. Hard Working.

HOT OFF THE PRESS



Four bedroom home in Dorset Park on a large, well landscaped lot. Eat in kitchen with walk-out to covered patio, fenced yard, Double drive, newer windows, roof, furnace, central air and cleaner. Within walking distance of go-train, shops, schools and restaurants. **Call Carole today for more details. Priced to sell at \$347,900.**

HOT OFF THE PRESS



FABULOUS TEN ACRES

in the country located within excellent commuting distance of all major centres. Great escarpment views and offers gorgeous indoor pool, huge stocked pond, tennis court, entertainer's delight in an outbuilding with bath, bar, pool table. Walk out from building to your own private parkland. Finished lower level with games room, family room, bath, bar, sauna and entry to indoor pool and sitting area. **Call Carole for further details. \$1,099,000.**

I CAN PUT A SOLD SIGN ON YOUR LAWN!
Give Me A Call For A Complimentary Home Evaluation!



Eva Gooding*
Sales Representative

Office 905-878-8101
Direct 905-691-2401

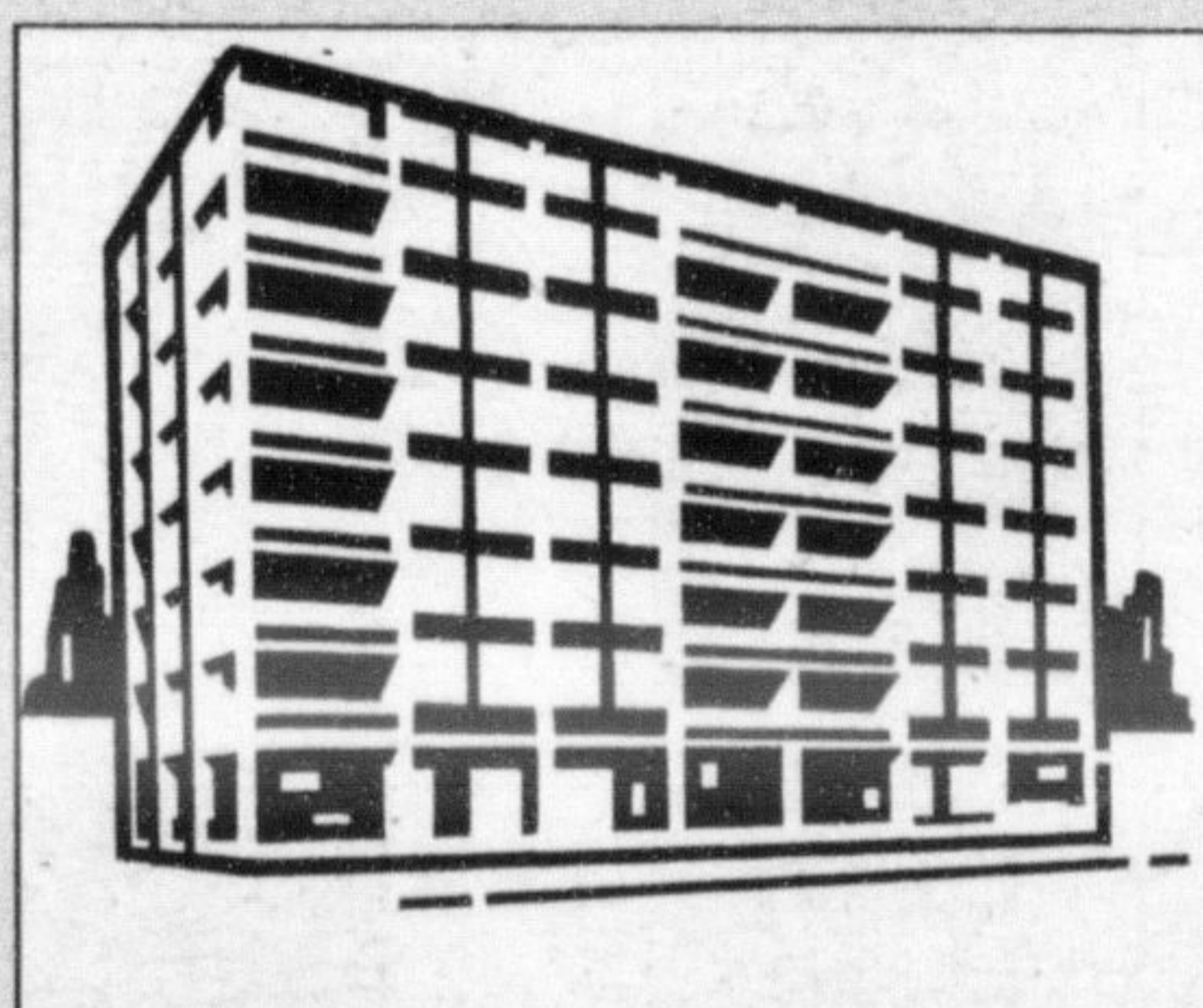


EXECUTIVE UPSCALE TOWNHOME
in the 'Fairfields' complex of Olde Milton. A sharp open concept living and dining room layout with gas fireplace and garden doors leading out onto a gorgeous ravine that provides a beautiful private backyard. Upgraded cherrywood stained cabinetry in kitchen and all appliances are included. Drop down ceiling, entry into garage from the house, extra large basement windows and central air conditioning are a few of several upgrades. Master suite so large and with full ensuite. Within walking distance to downtown's charming shoppes, bistros and all the amenities. Plenty to offer and so much to enjoy. **Mls#2005283 Listed at \$312,500**



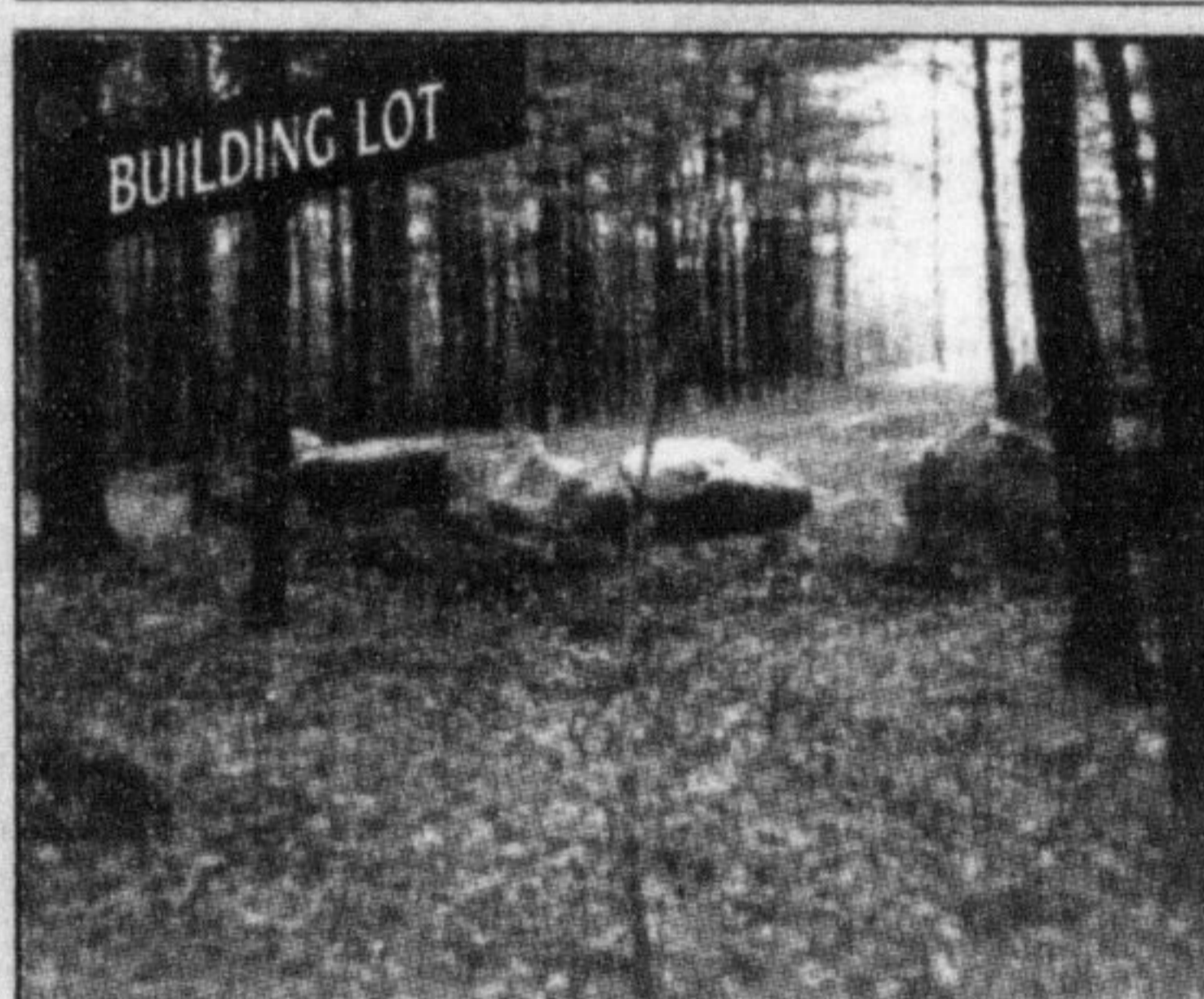
FOR LEASE.....

Condominium apartment with one bedroom, den, kitchen with granite countertop, balcony, located within close proximity to all transportation routes, schools, shopping, a variety of four season recreational activities and employment opportunities all within easy reach. Located in family friendly neighbourhood. **Listed at \$1,290.00 Call Eva Gooding.**



LOCATED IN CAMPBELLVILLE

Minutes to the 401 and Mohawk raceway, over two acres with hydro, laneway and well, a combination of privacy yet not isolated, with a tarred and chipped road in process, few and far between located in an absolutely beautiful area. **Listed at \$339,900. Call Eva Gooding**



ON THE ESCARPMENT

An impressive entrance provides great curb appeal into this all brick Arista Greystone model home. Approx 30k in upgrades. Premium yard with exit from garage into backyard, plus parking for three cars. Extended front porch overlooking greenspace. A beautiful gourmet size kitchen with centre island, rich mocha stained cabinetry, 5 appliances included, rich hardwood throughout main and staircase. All bedrooms are large, master ensuite with soaker tub and separate shower. Simply a gorgeous house, just move in and enjoy. **Mls #2004902 Listed at \$359,900 Call Eva Gooding.**



NEVER LIVED IN

Built by Milton Trails Fieldgate Homes, attractive curb appeal with view of the escarpment, all brick two storey with covered front porch, no sidewalk side, "Carlisle model with espresso kitchen cabinets with six appliances included, four generous size bedrooms, main floor great room, central air and 9' ceilings, fresh new look and move in as early as you wish! **Listed at \$369,000 Call Eva Gooding.**



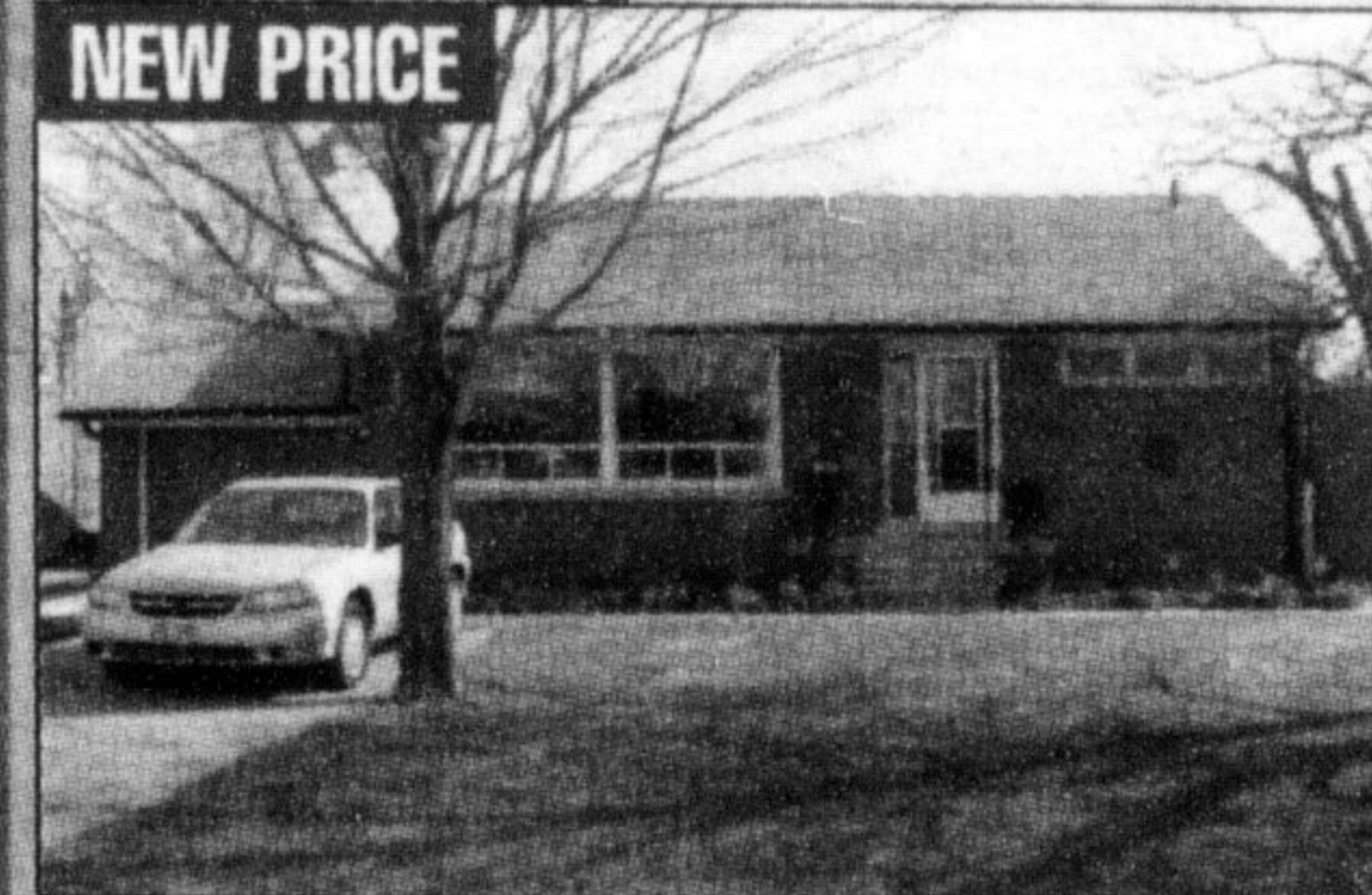
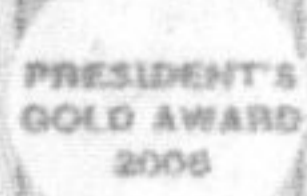
FRESH NEW LOOK...

Many special and unique features...landscaped, fenced yard with exterior access to backyard from garage, enclosed front porch, impressive entrance provides great curb appeal and design presence for this exceptional home, attention to detail from top to bottom with recent kitchen renovations including appliances, garden doors, main floor family room, combined living and dining room with fireplace, master suite with sitting room, full washroom and step down bedroom, professionally completed lower level also with full washroom, bedroom and recreation room, most inviting. **Listed at \$314,900. Call Eva Gooding.**



Kim Scott*
Sales Representative

878-8101
kimscott@royallepage.ca



BRICK BUNGALOW

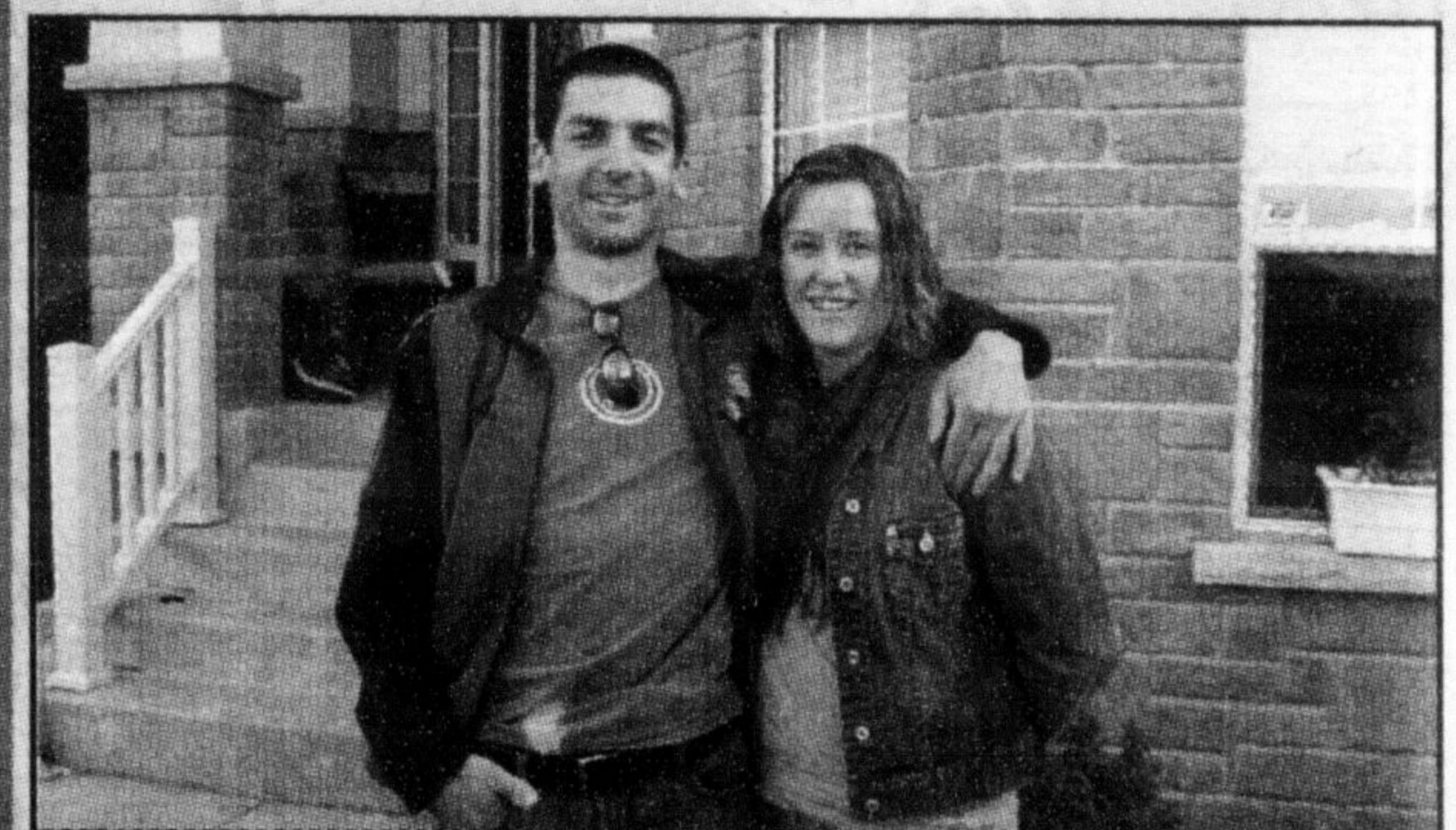
Very bright brick bungalow on a large lot in old Milton. New kitchen with chocolate cupboards, ceramic backsplash & breakfast bar open to lg living rm.

Hardwood floors on main level, updated bathroom & patio doors leading to lg deck. Finished basement with lg rec rm, big bedroom and full bath plus utility & storage areas. Short walk to downtown. **\$319,900.**



CLEMENTS DRIVE

Well maintained executive home backing onto a park on a desirable and seldom offered street. Windows (including basement and garage) replaced, attic insulation R80, garage door, roof '98, & furnace 2002. Hardwood in main floor family and walking home for lunch distance to elementary and high schools. **\$439,900**



Thank you and Congratulations on your beautiful new home Francesco and Gillian!



Helping you MOVE in a New Direction!
905-878-8101



Diane Maynard
Sales Rep.
dianemaynard@royallepage.ca



Susan Recoskie
Sales Rep.
susanrecoskie@royallepage.ca



ADULT LIFESTYLE
Shows to perfection. Gorgeous bungalow with open concept kitchen, living and dining room. Rich hardwood floors, gas fireplace, main floor laundry, huge deck with gazebo, plus 2 finished bedrooms and full bath in lower level. Call Susan or Diane to see all the upgrades in this lovely home.



NEW OFFERING
Lovely freehold end unit townhome. Close to downtown. This warm and inviting home features 3 bdrms, 1 1/2 baths, finished family rm in lower level. Don't miss this one. Call us!



CHECK IT OUT!
Situated on a quiet street in sought after Dorset Park. This 3 bdrm bungalow has awesome potential. Call us for your personal tour.



Sandy Del Papa*

AN ACCREDITED "HOME STAGING" PROFESSIONAL



DID YOU KNOW?

SANDY OFFERS A COMPLIMENTARY STAGING CONSULTATION WITH ALL LISTINGS. SHOWS TO PERFECTION! A MUST SEE!



Stunning Mattamy "Nettlebrook". Close to new school and park. Thousands spent on upgrades. Eg. Hardwood floors, angled ceramics, crown mouldings, travertine backsplash, 2nd flr laundry, fenced yard, keyless entry from garage, over-size basement windows & much, much, more. Call Sandy for more info.

See sandydelpapa.ca for interior Pictures