

# We're Kickin' The SAVINGS Into HIGH GEAR!

WE ARE BUILDING A NEW CAR COMPANY.

PRESENTING THE

**CHRYSLER**  
**BUY WITH**  
**CONFIDENCE**  
GUARANTEE

**PRICE GUARANTEE**

Order a new vehicle and if the offer gets better by the time you take delivery, you get the better deal.

**NO PAYMENTS FOR 90 DAYS**

Make no monthly payments for 90 days, giving you more financial flexibility.

**3 MONTH PAY BREAK**

We will cover any 3 of your monthly payments at any time for any reason. Up to \$500 a month

**FULLY-BACKED WARRANTY**

The added peace of mind knowing that your purchase is fully protected.

ADD IT ALL UP... A NEW CHRYSLER, JEEP OR DODGE VEHICLE IS A PURCHASE YOU CAN HAVE CONFIDENCE IN.

Industry Exclusive Price Guarantee

**Plus**

**NO PAYMENTS FOR 90 DAYS**

With Subvented Finance\*

**Plus**

**3 MONTH PAY BREAK**

With Subvented Finance\*



**2009 JEEP**  
**Compass**

**\$2,750** <sup>††</sup> **CASH DISCOUNT** **OR** **2.89%** <sup>††</sup> **PURCHASE FINANCING** **OR** **3.69%** <sup>††</sup> **PURCHASE FINANCING**  
FIXED RATE (60 mth) **OR** FIXED RATE (72 mth)



**2009 JEEP**  
**Patriot**

**\$2,000** <sup>††</sup> **CASH DISCOUNT** **OR** **2.89%** <sup>††</sup> **PURCHASE FINANCING** **OR** **3.69%** <sup>††</sup> **PURCHASE FINANCING**  
FIXED RATE (60 mth) **OR** FIXED RATE (72 mth)



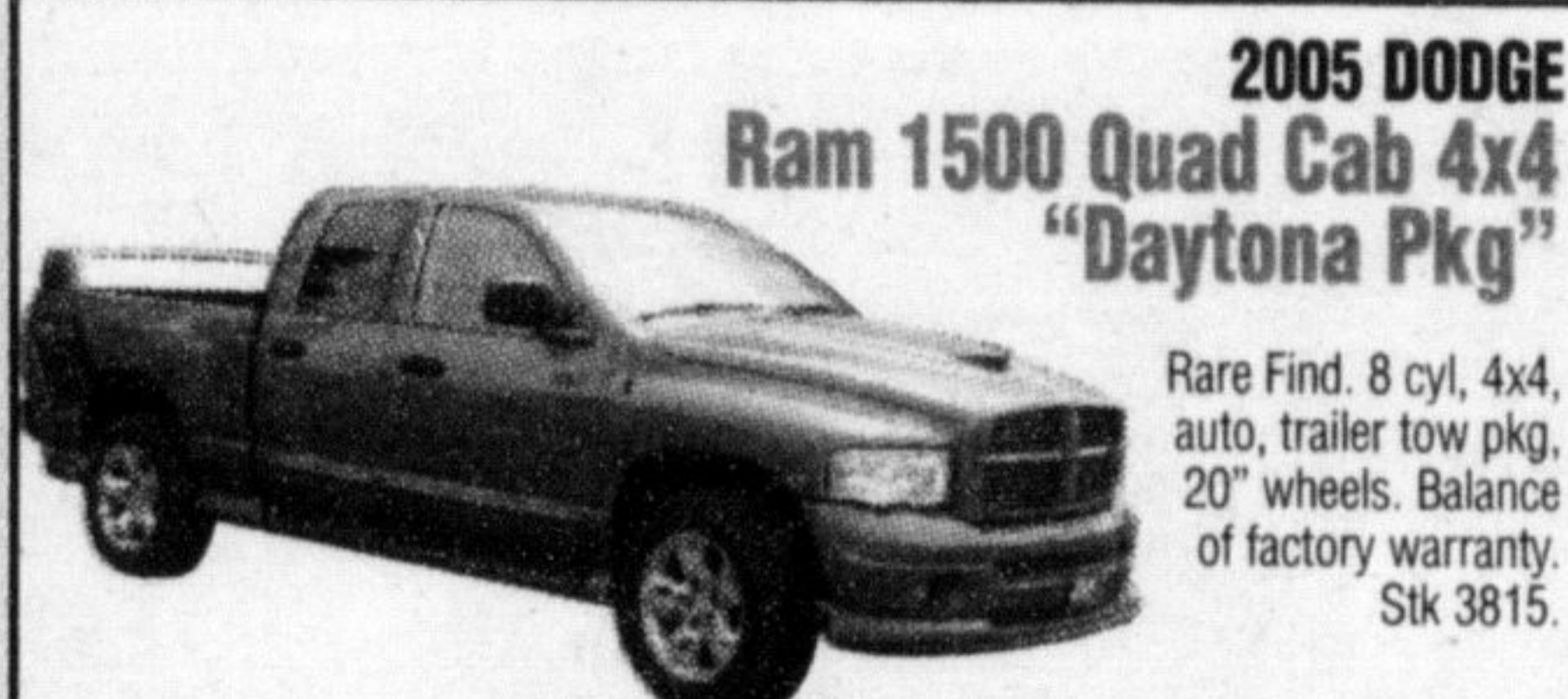
**2009 DODGE**  
**Journey SXT**

**\$2,750** <sup>††</sup> **CASH DISCOUNT** **OR** **4.19%** <sup>††</sup> **FIXED RATE (60 mth)**  
**+ NO PAYMENT FOR 90 DAYS**  
**+ 3 MONTH PAY BREAK**



**Gary's**   
**PRE-OWNED**  
**SPECIALS**

*All Safety & E-Tested!*



**2005 DODGE**  
**Ram 1500 Quad Cab 4x4**  
**"Daytona Pkg"**

Rare Find. 8 cyl, 4x4 auto, trailer tow pkg, 20" wheels. Balance of factory warranty. Stk 3815.

**\$206** <sup>\*</sup> **\$0 DOWN** **BI-WEEKLY** **\$21,988** <sup>†</sup>  
Taxes Included 72 Mths OAC.



**2008 CHRYSLER**  
**Pacifica Sport FWD**

3.8L V6, auto, alum wheels, p.front seat, keyless entry. Only 18,400 kms. Balance of Factory warranty. Stk P3709.

**\$195** <sup>\*</sup> **\$0 DOWN** **BI-WEEKLY** **\$20,888** <sup>†</sup>  
Taxes Included 72 Mths OAC.

**2008 CHRYSLER**  
**300 Touring**



6cyl, p.driver, alum wheels with only 23,300 kms. Balance of Factory Warranty. Stk P3690.

**\$168** <sup>\*</sup> **\$0 DOWN** **BI-WEEKLY** **\$17,988** <sup>†</sup>  
Taxes Included 72 Mths OAC.



**2007 DODGE**  
**Ram 1500 SLT Quad**  
**Cab 4x4**

8cyl, air, p.driver seat, pl, pw. Bal of factory warranty. Former rental. Stk P3810.

**\$233** <sup>\*</sup> **\$0 DOWN** **BI-WEEKLY** **\$24,988** <sup>†</sup>  
Taxes Included 72 Mths OAC.



**2007 DODGE**  
**Caliber**

1 owner, auto, air, pw, pdi, cruise control. Bal of factory warranty. Stk P3803.

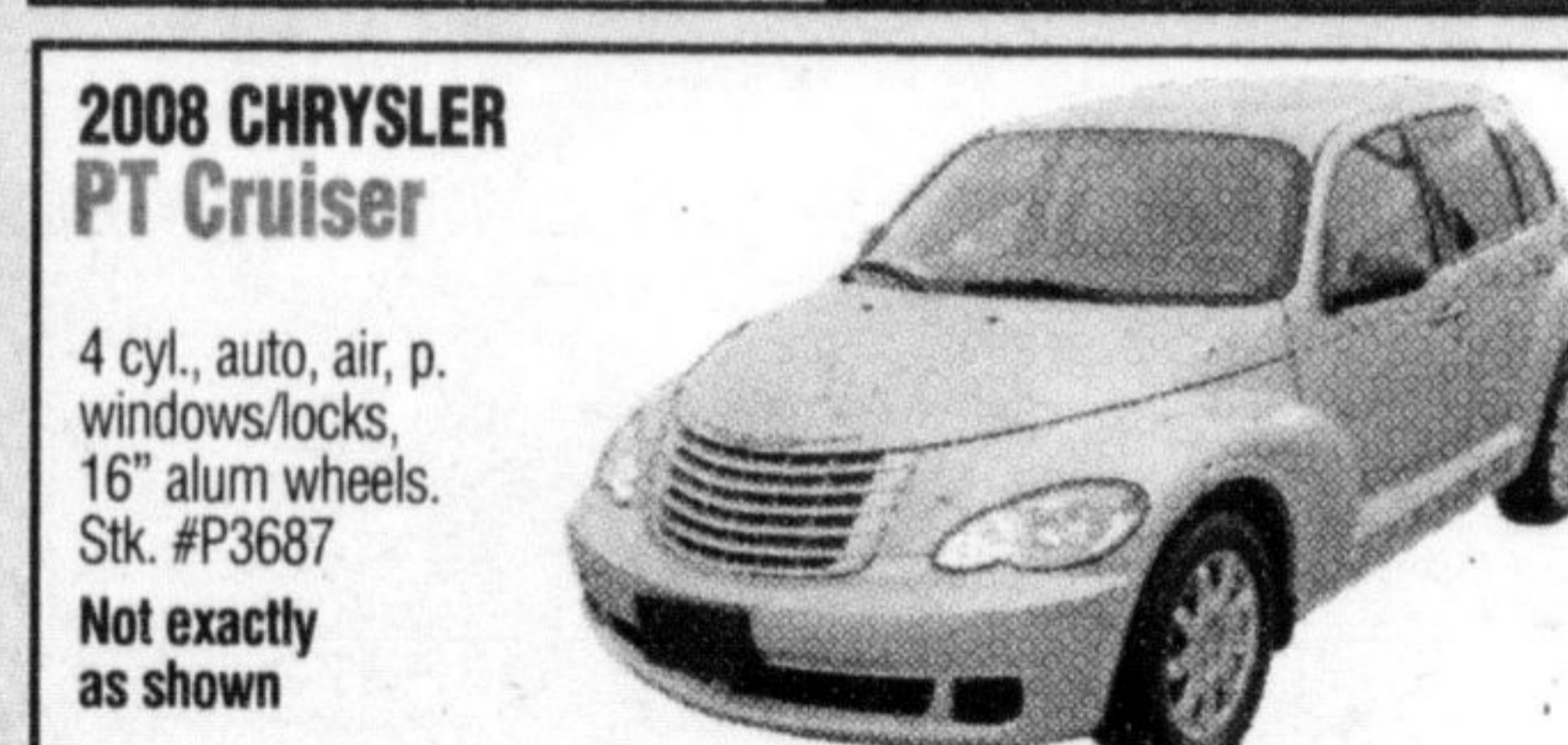
**\$123** <sup>\*</sup> **\$0 DOWN** **BI-WEEKLY** **\$12,888** <sup>†</sup>  
Taxes Included 72 Mths OAC.



**2005 DODGE**  
**Caravan**

6cyl, auto, trailer hitch, remote start, pw, pl, A/C. Bal of factory warranty. Stk P3810.

**\$109** <sup>\*</sup> **\$0 DOWN** **BI-WEEKLY** **\$9,988** <sup>†</sup>  
Taxes Included 60 Mths OAC.

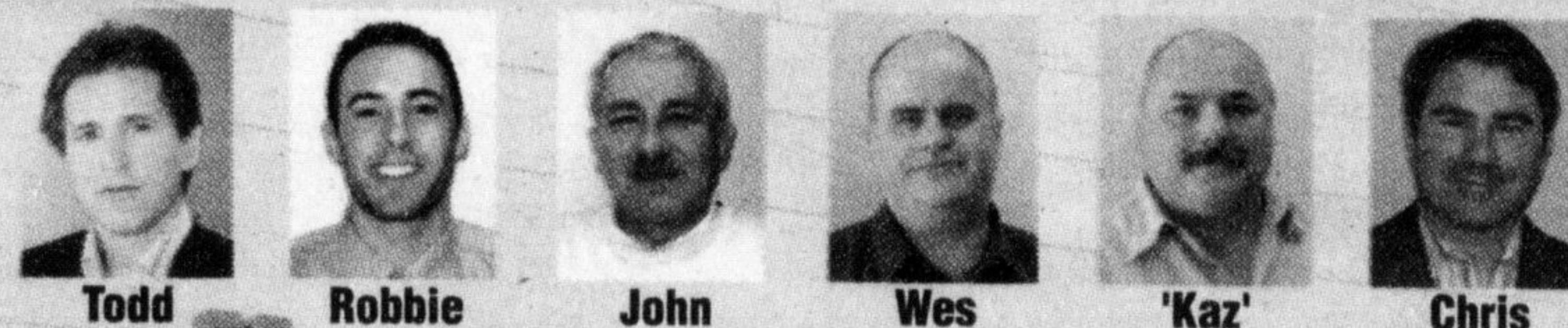


**2008 CHRYSLER**  
**PT Cruiser**

4 cyl, auto, air, p. windows/locks, 16" alum wheels. Stk. #P3687. Not exactly as shown.

**\$123** <sup>\*</sup> **\$0 DOWN** **BI-WEEKLY** **\$12,888** <sup>†</sup>  
Taxes Included 72 Mths OAC.

**Hunt**  
**Chrysler Jeep**

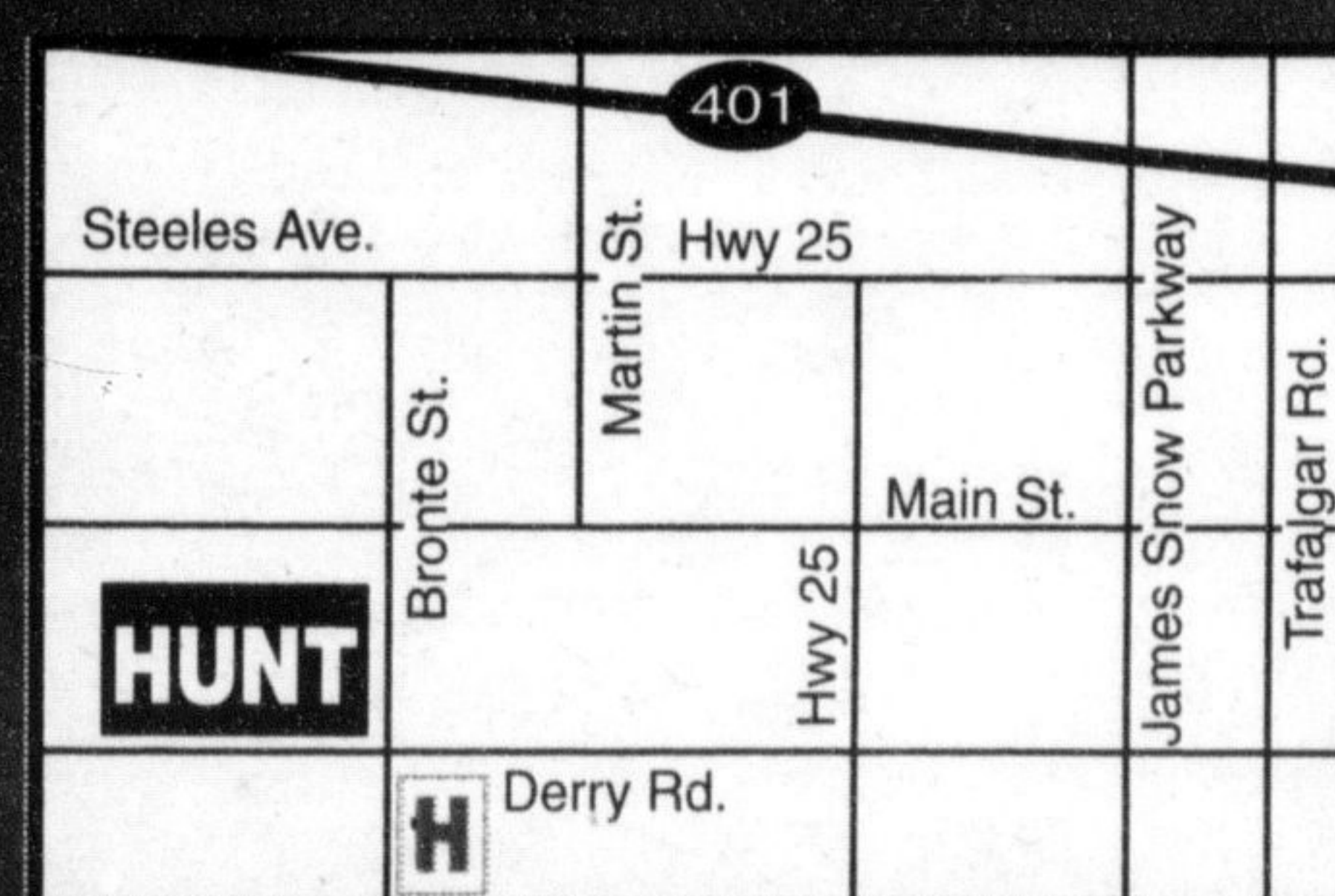


**Milton: (905) 876-2580**  
**Toll Free: 1-866-848-8816**  
**Email: sales@huntchrysler.com**

**Drive that extra mile! ☺**  
**We will make you smile!**

Your **Dealership**

**500 BRONTE ST. S., MILTON**



**SALES: Mon-Thurs 9-9, Fri. 9-6, Sat. 9-5**  
**SERVICE: Mon-Fri 8-5, Tues. 8-8, Sat. 8-12**

**SERVICE/PARTS:**

[www.huntchrysler.com](http://www.huntchrysler.com)

[www.huntchrysler.ca](http://www.huntchrysler.ca)

Wise customers read the fine print. \*Chrysler Canada will cover any 3-months payments at ANY TIME for ANY REASON over the life of the loan, up to \$500 per month (eligible on select models utilizing subvented financing with RBC or Scotiabank). Financing \$20,000 @ 0% interest charge, 0 monthly. Payment \$333.33 only with RBC or Scotiabank. ††Compass & Patriot DO NOT qualify for 90 Day No Payment or 3 month pay break. OAC. See Dealer for details. †Preworn sales prices are plus PST, GST, admin fee & lic fee. \*Bi-weekly payments include GST, PST Stk P3815, P3709, P3690, P3810 @ 8.24%, Stk P3811 @ 8.19%, Stk P3803, P3687 @ 8.54%. Example: borrowing \$20,000 @ 8.24% over 72 mths Bi-weekly payment is \$162.93. OAC. Ad expires June 11, 2009.