

Bulk Waste Collection

3 items maximum

Bulk waste is considered a large household item that is over 23 kg (50 lbs) or that will not fit into a closed garbage bag or container. Metal items or appliances are not accepted as bulk waste, and are collected on a call-in basis only. There is a **three (3) item limit** per scheduled bulk collection day. Additional items will not be collected.



Bulk waste collection takes place in all urban and rural areas, excluding Halton Hills Collection Areas 1 and 2. Please check your 2009 Waste Management Guide and Collection Calendar for your collection area details, or visit www.halton.ca/waste to use our "Search by Address" tool.

Keep your neighbourhood clean—on your scheduled bulk waste collection day, place items at the curb by **7 a.m.** and no sooner than **5 p.m.** the evening before. Items collected for bulk are disposed of in the landfill.

Consider giving items in good condition to a reuse centre. Please contact the reuse centre to ensure they accept the material before you drop it off. Visit www.halton.ca/waste for a list of reuse centres.

✓ Acceptable Bulk Waste Items

- Furniture (couches, chairs, tables, mattresses, etc.)
- Wooden console TVs
- Flooring (carpets, under padding and linoleum), bundled in maximum 1.2 m (4 ft) x 0.6 m (2 ft) lengths (one bundle equals one bulk item)
- Toilets
- Windows and mirrors (to avoid glass shattering, place tape across in an "X" pattern)
- Wood (fencing, picnic tables, shelving, skids, doors, etc.), dismantled and bundled in 0.6 m (2 ft) by 1.2 m (4 ft) lengths

✗ Not Accepted

- Metal and Appliances (call-in collection only, see adjacent advertisement)
- Automobile parts*, including vehicle seats
- Propane tanks
- Tires
- Building and demolition debris
- Concrete and bricks
- Household hazardous waste
- Cardboard boxes
- Tree branches
- Tree stumps**
- Soil and rocks

These items may be disposed of at the Halton Waste Management Site (HWMS), 5400 Regional Road 25, Milton. The HWMS is open Monday to Saturday, 8:00 a.m. to 4:30 p.m.

*Only small non-hazardous automobile parts can be accepted at the HWMS.

**Only small tree stumps under 30 cm (1 ft) in diameter can be accepted at the HWMS.

Additional Information

- Please ensure only the items you want collected are at the curb. Items including dollies, laundry baskets, totes, bicycles, etc., may be mistakenly collected by the collection truck or scavenged by other residents. Halton Region is not responsible for items mistakenly collected or scavenged.
- Do not pile items on top of one another.
- All nails and staples must be removed prior to collection.
- Please note: one roll of flooring equals one bulk item.
- Electronics can be recycled at the Halton Waste Management Site or on Special Waste Drop-off Days. Visit www.halton.ca/waste for more information.

More **Blue & Green** for a **Better Planet**

Metal & Appliance Call-in Collection

Metal and appliances are collected on a call-in basis only. This service is not offered in Halton Hills collection areas 1 and 2.



You must schedule metal and appliance pick up before placing material out for collection.

How to get metal and appliances picked up:

- Call Halton Region between 8 a.m. and 5 p.m. Monday to Friday by dialing 311 or 905-825-6000 or 1-866-4HALTON (1-866-442-5866) or TTY 905-827-9833.
- You will be asked for a description of the material to be collected.
- Halton Region will schedule a date for your metal and/or appliances to be collected. You will be given a pick-up number and a date for when your material will be collected.

On your scheduled metal and appliance collection day, place items at the curb by 7 a.m. and no sooner than 5 p.m. the evening before.

For safety reasons, please remove all appliance doors and empty the water from washing machines, dishwashers, etc. Put doors at the curb safely, so they do not become tripping hazards. Place tall appliances such as refrigerators, upright freezers and hot water tanks flat on the ground. Do not lean items against poles or trees.

✓ Acceptable Metal & Appliances

- Air conditioners (dismantled, 4 ft lengths maximum)
- Barbeques (no propane tanks)
- Metal bath tubs
- Bicycles (no tires)
- De-humidifiers
- Dishwashers
- Dismantled swing sets
- Dryers
- Metal fences
- Freezers
- Furnaces
- Metal furniture
- Heat pumps
- Hot water tanks (empty)
- Microwaves
- Pool heaters
- Refrigerators
- Refrigerated water coolers
- Metal shower enclosures
- Metal sinks
- Stoves
- Washers
- Metal water softeners (no water/salt)

✗ Not Accepted

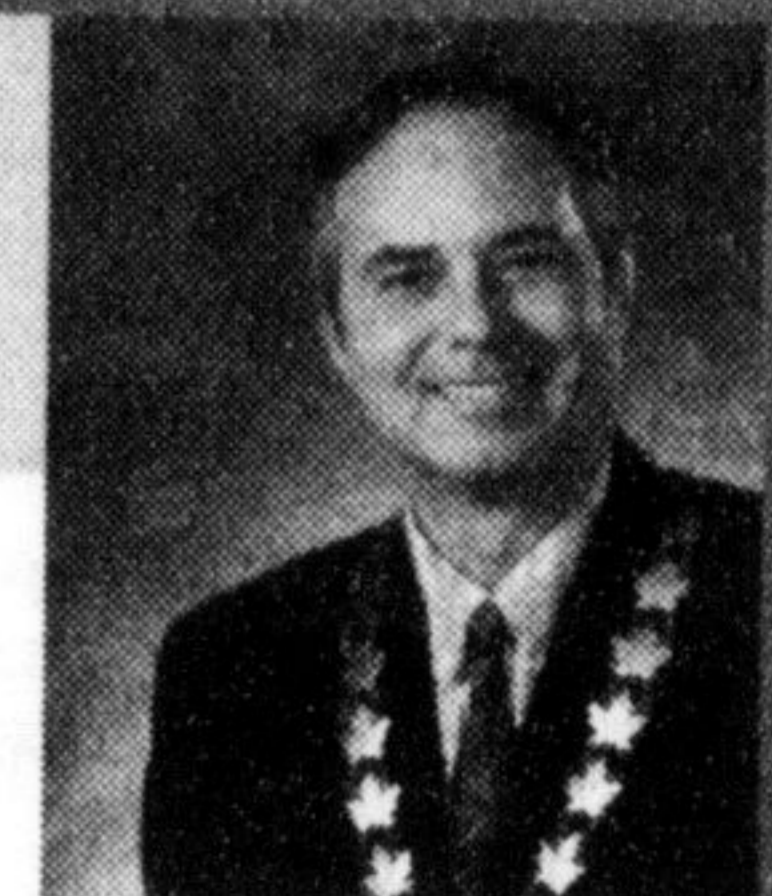
If you are unsure whether a metal item or appliance can be collected, call Halton Region between 8 a.m. and 5 p.m. Monday to Friday by dialing 311 or 905-825-6000 or 1-866-4HALTON (1-866-442-5866) or TTY 905-827-9833.

2010 budget directions support 0% tax and rate freeze

On May 13, Halton Regional Council approved the Budget Directions Report for the Region's 2010 Budget and Business Plan. As requested by Council, the approved directions call for a zero per cent (0%) Regional tax and rate freeze in 2010.

With recovery from the current recession not anticipated until late 2010, the tax and rate freeze is Council's response to the existing economic conditions and the significant financial pressures being felt by many of Halton's residents and businesses.

The Region's strong financial planning principles will ensure this community continues to receive the services and programs it expects, while providing residents with the financial relief they need.



Gary Carr
Regional Chair

Halton Regional Meeting Schedule

June 3	9:30 a.m.	Regional Council
June 16	9:30 a.m.	Health & Social Services Committee
June 17	9:30 a.m.	Planning & Public Works Committee
June 17	1:30 p.m.	Administration & Finance Committee