

# THE LAST 2008 BRAND NEW GRAND CARAVAN SXT!

25H Pkge, Trailer Tow prep pkge, 3.8L 6Cyl, power drivers seat, full "Stow & Go" Aluminum wheels.  
Stk #RG134

MSRP **\$34,995**

Cash Discount & Incentives **\$9,007**

**Don't Miss Out!!! \$25,988†**



**Freight Included!!**

CHRYSLER  
**BUY WITH CONFIDENCE**  
GUARANTEE  
CHRYSLER

WE ARE BUILDING A NEW CAR COMPANY

A31 • MILTON CHAMPION Friday, May 29, 2009



**CHRYSLER BUY WITH CONFIDENCE GUARANTEE!!**

Hunt Chrysler Jeep is proud to be a part of the Milton Community in the past and present and will be in the future.

In the past 20 years we have offered exceptional customer service and value. Hunt Chrysler Jeep has and will continue to do so even in these tough economic times.

Whether your needs are new vehicles, pre-owned vehicles, services and/or parts; Hunt Chrysler Jeep is committed to giving you superb customer satisfaction.

We look forward to our continued success, appreciate the loyalty of our present customers and welcome future customers to our dealership.

*Gary Hunt*

Industry Exclusive Price Guarantee  
**Plus NO PAYMENTS FOR 90 DAYS**  
With Subvented Finance\*

**Plus 3 MONTH PAY BREAK\***  
With Subvented Finance\*



2009 Journey SXT

**\$2,750** Cash Discount

-OR-

plus 3.79% Fixed Rate (60 mth)  
+ No Payment for 90 Days  
+ 3 Month Pay Break



2009 Grand Caravan Canada Value Package

**\$6,900** Cash Discount

-OR-

\$500 Cash Back  
plus 0% Fixed Rate (60 mth)  
+ No Payment for 90 Days  
+ 3 Month Pay Break



*Gary's*  
**PRE-OWNED SPECIALS**

All Safety & E-Tested!

2007 DODGE Ram 1500 SLT Quad Cab 4x4



8cyl, air, p.driver seat, pl, pw. Bal of factory warranty. Former rental.

**\$24,988†**

2007 DODGE Caliber



1 owner, auto, air, pw, pdl, cruise control. Bal of factory warranty. Stk P3803.

**\$12,888†**

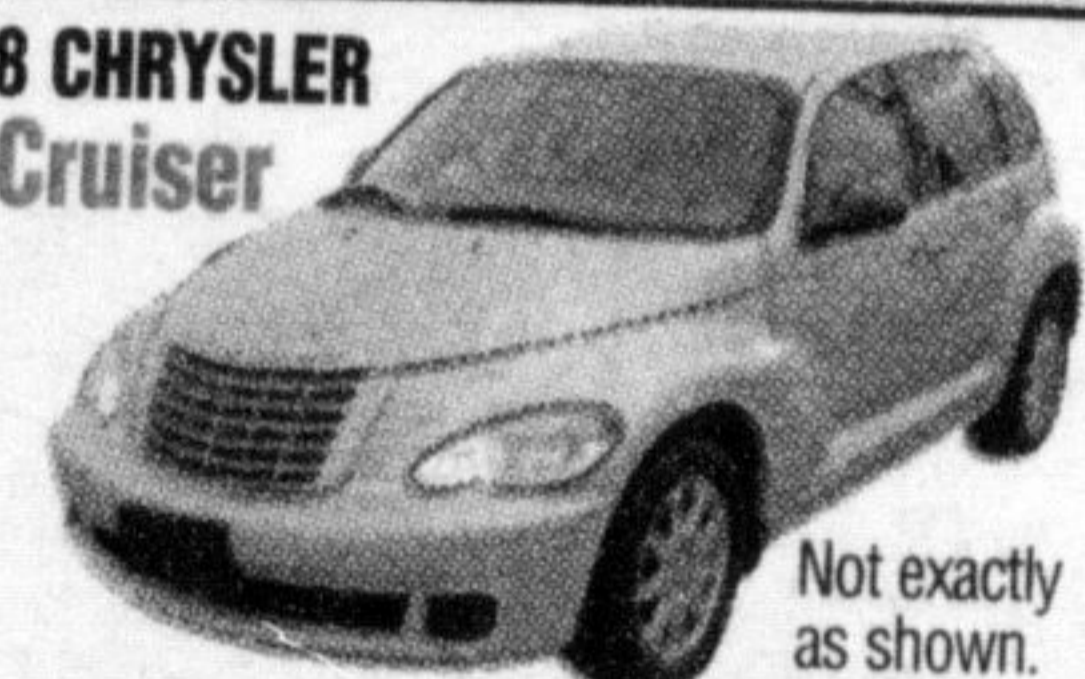
2005 DODGE Caravan



6cyl, auto, trailer hitch, remote start, pw, pl, A/C. Bal. of factory warranty. Stk P3810

**\$9,988†**

2008 CHRYSLER PT Cruiser



4 cyl., auto, air, p. windows/locks, 16" alum wheels. Stk. #P3687

**\$12,888†**

# Hunt

**Chrysler Jeep**



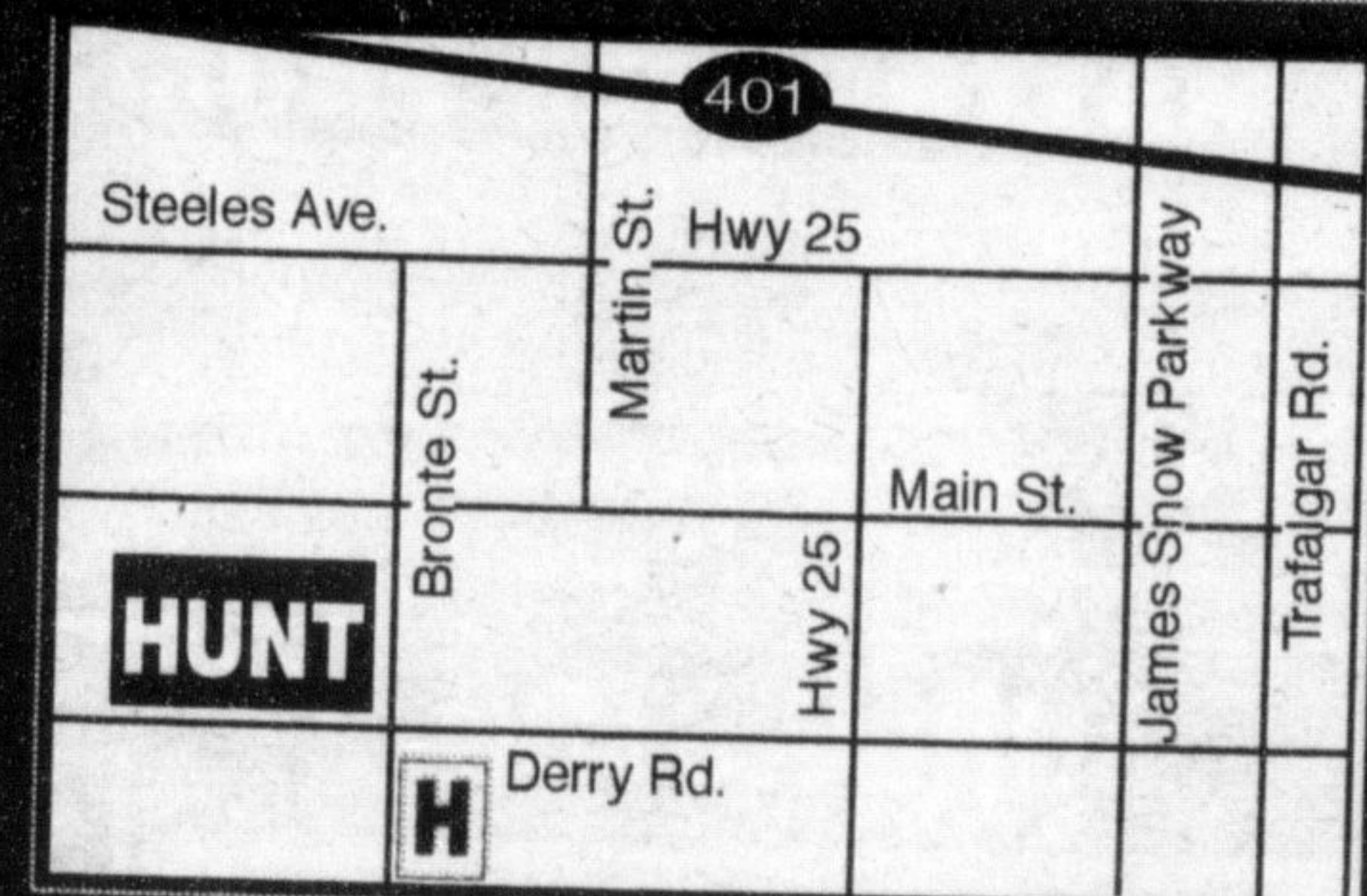
Milton: (905) 876-2580

Toll Free: 1-866-848-8816

Email: [sales@huntchrysler.com](mailto:sales@huntchrysler.com)

**Drive that extra mile! We will make you smile!**

**500 BRONTE ST. S., MILTON**



SALES: Mon-Thurs 9-9, Fri. 9-6, Sat. 9-5  
SERVICE: Mon-Fri 8-5, Tues. 8-8, Sat. 8-12

SERVICE/PARTS:  
[www.huntchrysler.com](http://www.huntchrysler.com)

[www.huntchrysler.ca](http://www.huntchrysler.ca)

Wise customers read the fine print: \*Chrysler Canada will cover any 3-months payments at ANY TIME for ANY REASON over the life of the loan, up to \$500 per month (eligible on select models utilizing subvented financing with RBC or Scotiabank). Financing \$20,000 @ 0% interest charge, 0 monthly. Payment \$333.33 only with RBC or Scotiabank. OAC. See Dealer for details. †Preowned & Brand new models are plus admin fee, tic fee, PST, GST. Ad expires May 31st, 2009.