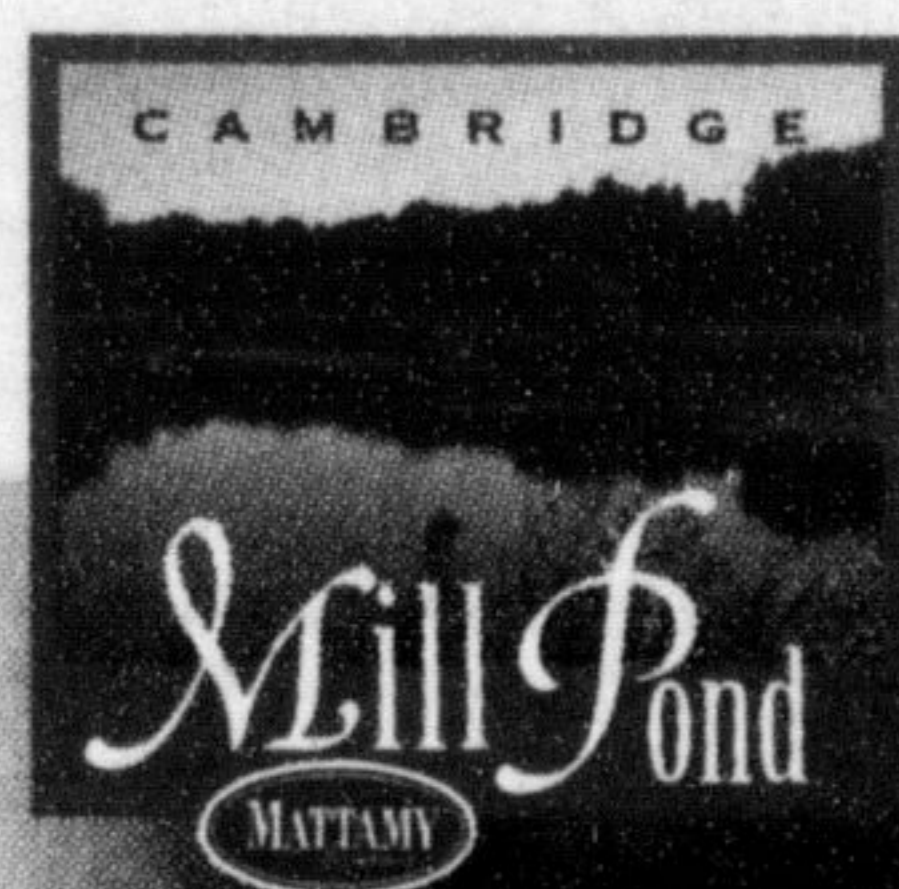




This Weekend, You'll Find A Lot More Ways To Enjoy Life Down By The Pond.



We have a great new release of homes in Mill Pond in Cambridge. So now more and more families can enjoy the peaceful, natural lifestyle of life down by the pond. The new release includes a full variety of Freehold Townhomes at very affordable prices and a host of distinctive fully detached WideLot™ homes for families large and small.

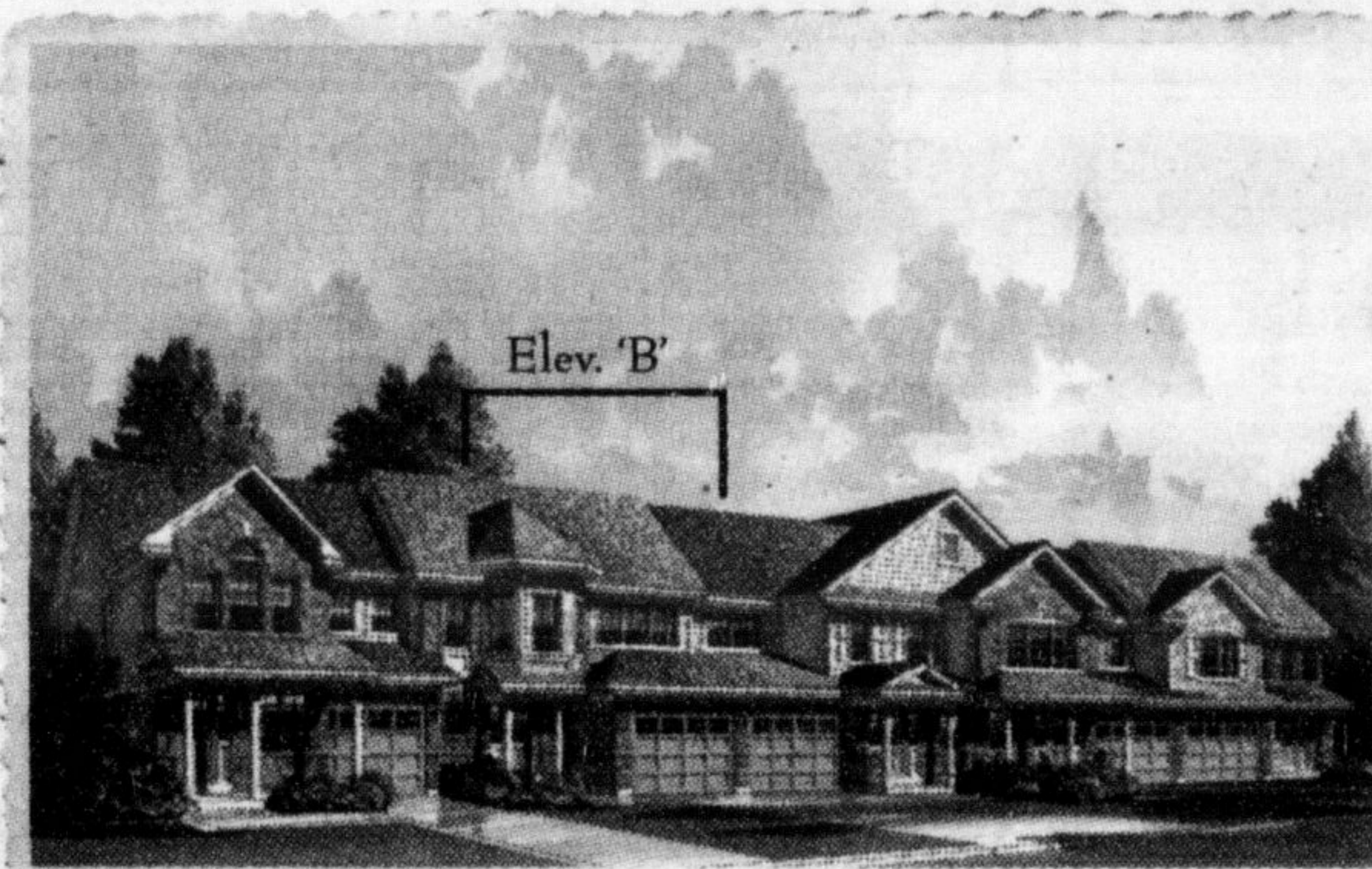
Please join us this weekend at Mill Pond in Cambridge.

It's just a short drive west and a whole world away.

Thank you

New Release Of Townhomes From \$189,990 & Detached Homes From \$214,990 In The #1 Selling Community!

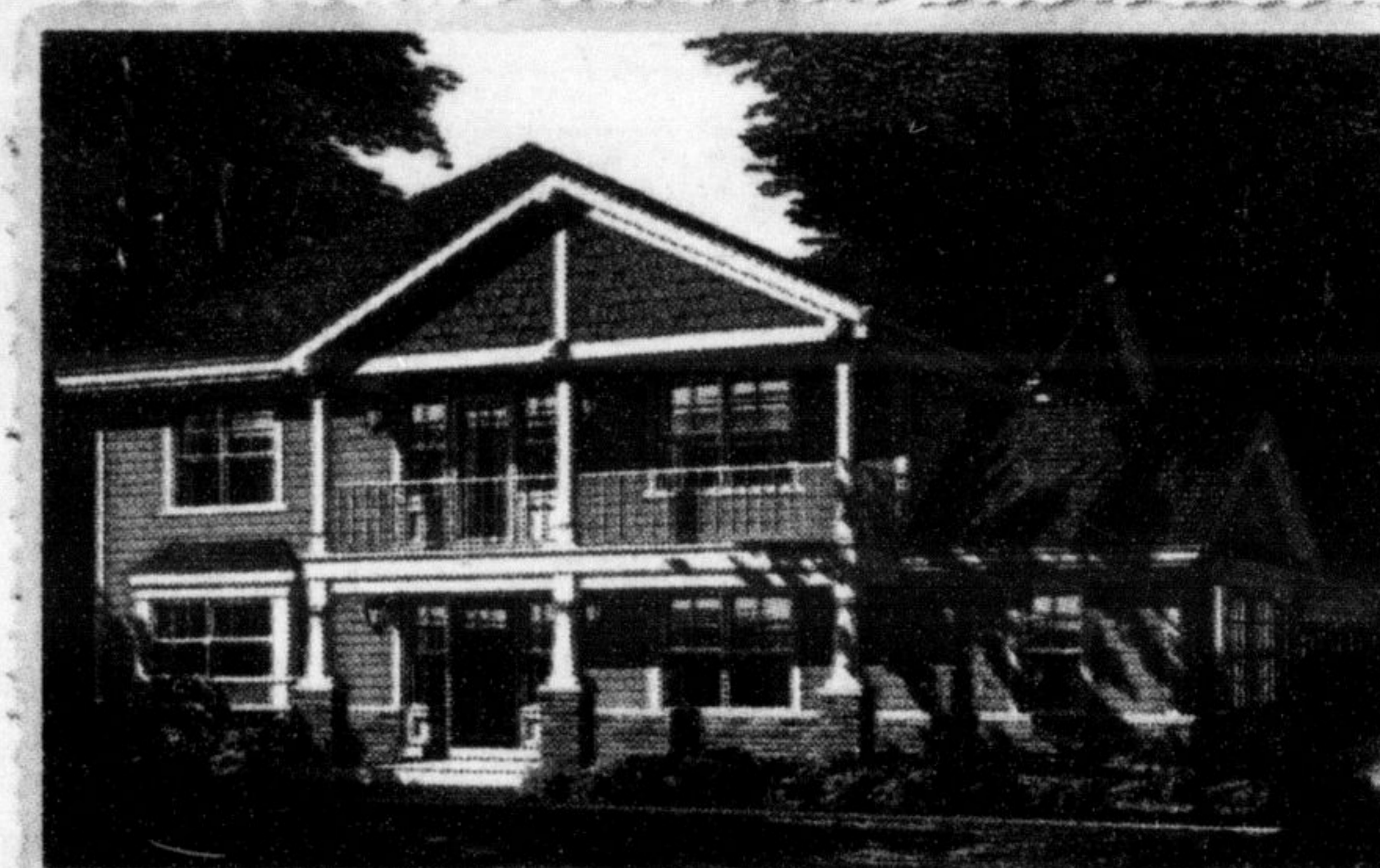
8 Model Homes Open To View. 5 New Homes Designs Now Available.



Elev. 'B'
Freehold WideLot™ Townhome, The Cyrus 'B',
1,111 Sq.Ft., \$189,990



34' WideLot™, The Albany 'A',
1,264 Sq.Ft., \$229,990



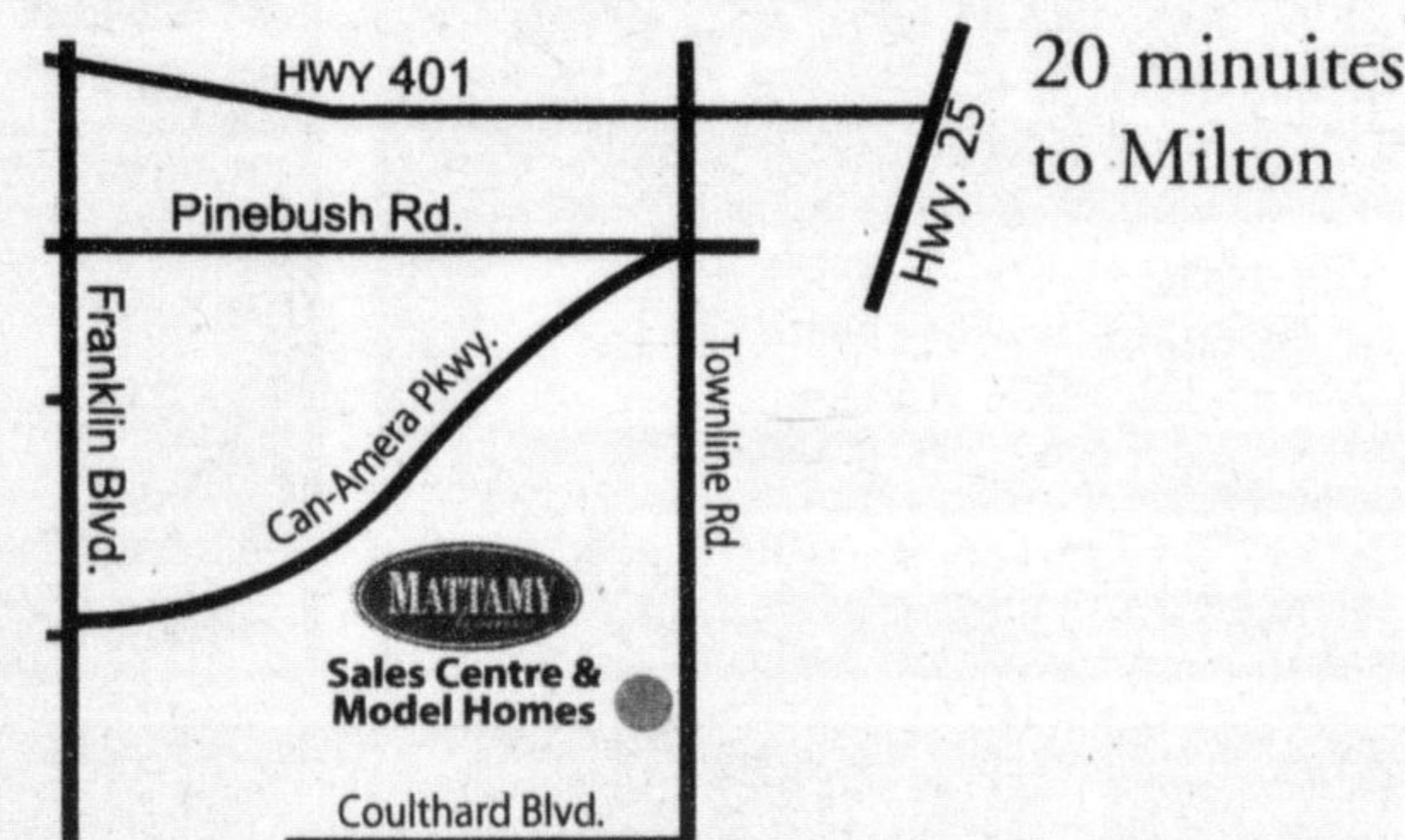
36' WideLot™, The Grand Valley Corner 'B',
1,911 Sq.Ft., \$284,990


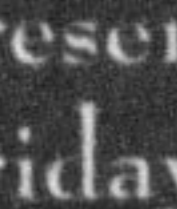


43' WideLot™, The Amberfield 'B',
1,702 Sq.Ft., \$279,990



50' WideLot™, The Bellingham 'B',
2,353 Sq.Ft., \$327,990






Presentation Centre Hours: Monday to Thursday 1pm-8pm; Friday 1pm-6pm; Saturday, Sunday and Holidays 11am-6pm
mattamyhomes.com





Highest in Customer Satisfaction With New Home Builders in Greater Toronto Area, Three Years In A Row

★★★★★
 ★★★★★

All illustrations are artist's concept. All dimensions are approximate. Prices, specifications, terms and conditions subject to change without notice. E.E.O.C.