

# MEADOWTOWNE REALTY

E., MILTON

www.meadowtowne.com



9RE • CANADIAN CHAMPION Wednesday, May 6, 2009

## AMY flowers

WATCH YOUR DREAMS GROW  
Broker  
905-878-6232  
Direct Line



Stunning 1800 sqft. Lindsay model located on one of the quietest streets in Hawthorne Village on a premium oversized lot. Beautiful interlock patio in the backyard. Gleaming dark hardwood floors & cozy gas fireplace.  
**\$359,900**



Great starter home in Burlington. Kitchen boasts ceramic backsplash and overlooks the yard. Finished rec room offers more living space. Fully fenced yard is your own oasis.  
**\$214,900**



Mattamy's Shady Glen 4 bedroom model (2025 sqft.) located close to schools & parks. Eat-in kitchen boasts upgraded cabinets & breakfast bar. Master ensuite features soaker tub & separate shower.  
**\$386,900**



Mattamy's Brentridge end unit (1297 sqft.) is Energy Star certified. The perfect starter home, with an open concept layout. Eat-in kitchen with custom backsplash. Master bedroom has walk-in closet & semi-ensuite.  
**\$249,900**



3 bedroom sidesplit in Dorset Park. Parking for 4 cars in the driveway. Updated kitchen with ceramic backsplash, crown moulding, and pantry. Master ensuite has been updated with glass surround shower & corner Jacuzzi tub.  
**\$339,900**



Mattamy's 4 bedroom Mayberry model (1787 sq ft) is an energy star home. Great open concept layout. Amazing eat-in kitchen with quartz counters & dark cabinets. Master bedroom complete with walk-in closet and ensuite bath includes soaker tub and separate shower.  
**\$1500/month**



Gorgeous 3 bedroom family home located close to everything. Parking for 2 cars in the driveway. Open concept layout with upgraded oak cabinets & breakfast area in the kitchen. Master bedroom has 2 closets & ensuite bath with soaker tub.  
**\$349,800**



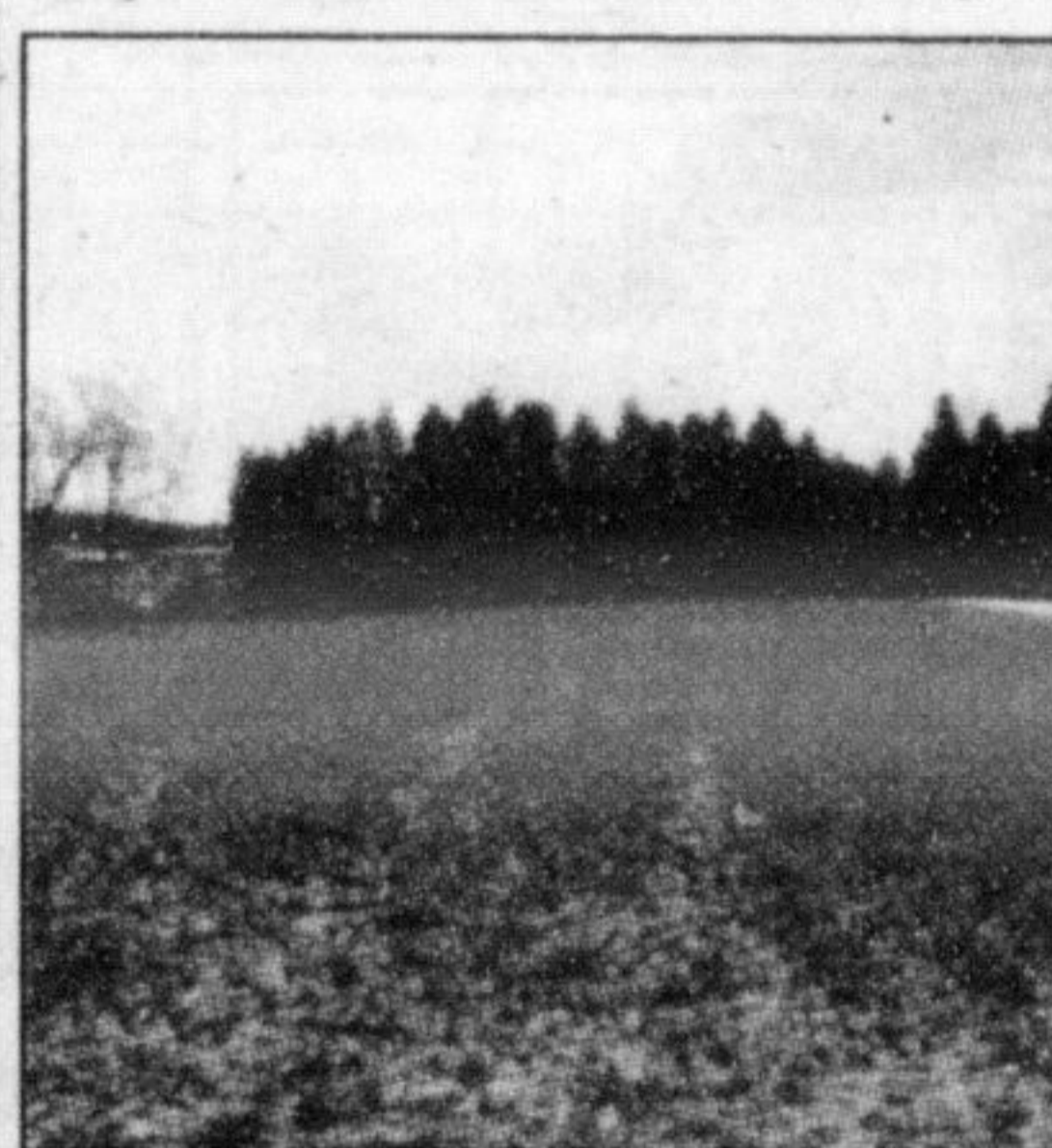
Gorgeous bungalow situated on just over 3/4 acre. Backing onto Chudleigh's. Inground pool and deck perfect for family BBQ's. Huge kitchen has centre island, extra pantry, stainless steel appliances & eat-in area. You will not be disappointed.  
**\$734,900**

**Pat Rideout**  
SALES REPRESENTATIVE 905-878-8101  
email: PatR@RoyalLePage.ca  
www.patrideout.ca  
Member of the Oakville-Milton, Toronto and Hamilton-Burlington Real Estate Boards

### OPEN HOUSE SATURDAY 2-4PM 2063 MILBOROUGH LINE



STUNNING 3 BEDROOM BUNGALOW ...that's in rare move-in condition. Totally renovated sparing no expense, and located just west of Campbellville on 10 picturesque acres. Open concept kitchen with centre island, granite countertops, backsplash, stainless steel appliances and hardwood floors - perfect for entertaining or just enjoying the view from any one of the many windows. Perfect for the hobbyist - not only is there a double attached garage, but an oversize double garage/workshop for all your toys. This one is a must-see. Call Pat for your personal appointment. **\$649,900.**



**BUILD YOUR DREAM HOME!**  
Great size and location to build your dream country home. Just west of Guelph Line in the hamlet of Moffat, this almost 4 acre building lot has a new drilled well in place. Located across from Tuscany Ridge estate subdivision. This property is a newly created building lot - a rare find, so don't miss out on this opportunity. Call Pat for further details. **\$329,900.**



**FOR LEASE AT \$1450 PER MONTH**  
Huge end-unit townhouse for lease with over 1800 sq ft of space for a growing family. Granite counters in the kitchen, hardwood in the LR/DR and all the appliances included. Across from school and proposed park, this corner unit boasts a huge porch for enjoying the warm summer evenings. There are 3 large bedrooms on the upper level and the master has an ensuite bath. **Contact Pat for further details and to view.**



**ABSOLUTELY STUNNING 4 BDR HOME** with all the upgrades you could want. This home is approx 2700 sq ft and has a LR/DR combination with hardwood, a main floor family room with gas fireplace and a ceiling that extends to the second level, open concept kitchen with high end stainless steel appliances, a main floor laundry, and main floor den. The upper level has 4 spacious bedrooms and 3 full bathrooms. **Impeccably decorated and maintained - it shows beautifully.**  
**\$459,900**

EXPECT THE *Royal Treatment*

**Sandy Del Papa**  
AN ACCREDITED "HOME STAGING" PROFESSIONAL  
DID YOU KNOW?  
SANDY OFFERS A COMPLIMENTARY STAGING CONSULTATION WITH ALL LISTINGS.

**LARGE 2 BDRM CONDO (RARE MODEL) \$253,900**  
This amazing corner unit is largest 2 bdrm model and boasts 2 balconies, loads of upgrades & shows to perfection.

**GREAT VALUE 3 BDRM DETACHED \$185,000**  
This stunning 3 bdrm home is finished top to bottom & boasts covered balcony, w/o to deck & fenced yard. Highly upgraded!  
A true showplace!

See sandydelpapa.ca for interior Pictures

## Top 1% Nationally again in 2008 THE BRAZEAU TEAM

WWW.MILTON-REALESTATE.COM



**EXECUTIVE RENTAL**  
In new Luxury Building. Approx 1,082 sq ft. Living/Diningroom combo has upgraded brdm and gas fireplace. Open concept kit w/upgraded cabinets, SS appliances and walk out to balcony. Ensuite laundry with washer & dryer. Master bedroom has 4 piece ensuite. Stunning Solarium style 2nd bedroom. Ready for immediate occupancy. Located minutes from 401. Steps to public transit, parks & "Go".  
**\$1,400 MTH MILTON**

**CHARMING CHARACTER HOME IN STEWARTTOWN**  
with Black Creek running through the back. Fish off your deck! Updated 2 bedroom home with siding, windows, electrical, hardwood floors and much more. Main floor laundry. Eat in kitchen, lots of parking.  
**\$328,000 HALTON HILLS**

**CHARACTER HOME**  
1 Acre with 3 bedroom home. Oversized garage/ workshop with hydro. Paddock and run-in for the horse lover. "Great Value"  
**\$285,000 HALTON HILLS**

**COUNTRY COMFORT - 2.6 ACRES**  
Conveniently located for commuters. The beautiful custom ranch bungalow has every attention to detail inside and out. Beautiful hardwood and porcelain floors throughout. Formal living and diningrooms. Outstanding kitchen with custom cherry cabinets and granite counters. Master suite with stunning 5 piece ensuite. Finished lower level has a recreation room, den and 2 bedrooms.  
**\$889,000 FLAMBOROUGH**

**5 ACRES**  
3 bedroom farmhouse with spacious, high ceilings. Oversized rooms. Country kitchen. Main fir familyroom with woodstove. Stable/barn with 4 stalls. Lean to and garage/workshop. 3 fenced paddocks with run-in shed. Beautiful perennial gardens. Ideally located just north of 401 and west of Hwy 25.  
**\$459,000 HALTON HILLS**

**OLDE MILTON**  
Legal Duplex ideally located in Old Milton across from Fairgrounds. Front unit is 2 storey, 3 bdrm and back unit is 1 storey 2 bdrms. Ideal income property or extended family property. Both units have gas fireplaces. Lots of parking.  
**\$419,000 OLDE MILTON**

**SPACIOUS 3 BEDROOM HOME**  
Spacious 3 bedroom townhome with fully finished basement. Open concept living/diningroom with gas fireplace and walk out to deck. Bright and spacious kitchen. Close to Go, schools and shopping.  
**\$191,900 MILTON**

**GREAT VALUE!**  
For this cozy townhouse located across from schools and parks. Close to Go, shopping & 401 access. Open concept living/diningroom with walk out. Eat in kit. 3 spacious bdrms. Fin bsmt recreation room with wet bar.  
**\$185,000 MILTON**

**BUILD YOUR DREAM HOME!**  
3 large building lots available in Freilton.  
For further information and photos on these properties please visit [Milton-realestate.com](http://Milton-realestate.com)

\* SALES REPRESENTATIVE \*\* BROKER