

**To Our Valued Guests and Residents of Milton**

On Tuesday, April 28, 2009 we received notice that the Franchisee of the MR. GREEK Mediterranean Grill located at 1149 Maple Ave. chose to close the restaurant and move on without any word or advance notice.

This has caused great inconvenience to our customers, valued suppliers, staff and all the members of the MR. GREEK team. This is definitely not what MR. GREEK stands for and our service standards are set high to offer our guests the most enjoyable experience.

During this time there will be an interruption in delivery service.

The closest locations pleased to serve you are:

**MR. GREEK Mediterranean Grill**  
 1940 Appleby Line  
 Burlington, ON  
 905-315-1550  
 Dine-In • Take-Out  
 Call-Ahead Pick Up • Catering

**MR. GREEK Express**  
 3021 Argentia Rd.  
 Mississauga, ON  
 905-824-1400  
 Dine-In • Take-Out  
 Call-Ahead Pick Up • Catering

In the coming weeks, we will have more information regarding the future of this location.

On behalf of the entire MR. GREEK Team, we offer the most heartfelt apologies and thank you for your patience and understanding.



*Because life has to be enjoyed™*

For further information please contact:

MR. GREEK Restaurants Inc.  
 402-49 The Donway West  
 North York, ON M3C 3M9  
 Tel: 416-444-3266  
 Email: feedback@mrgreek.com

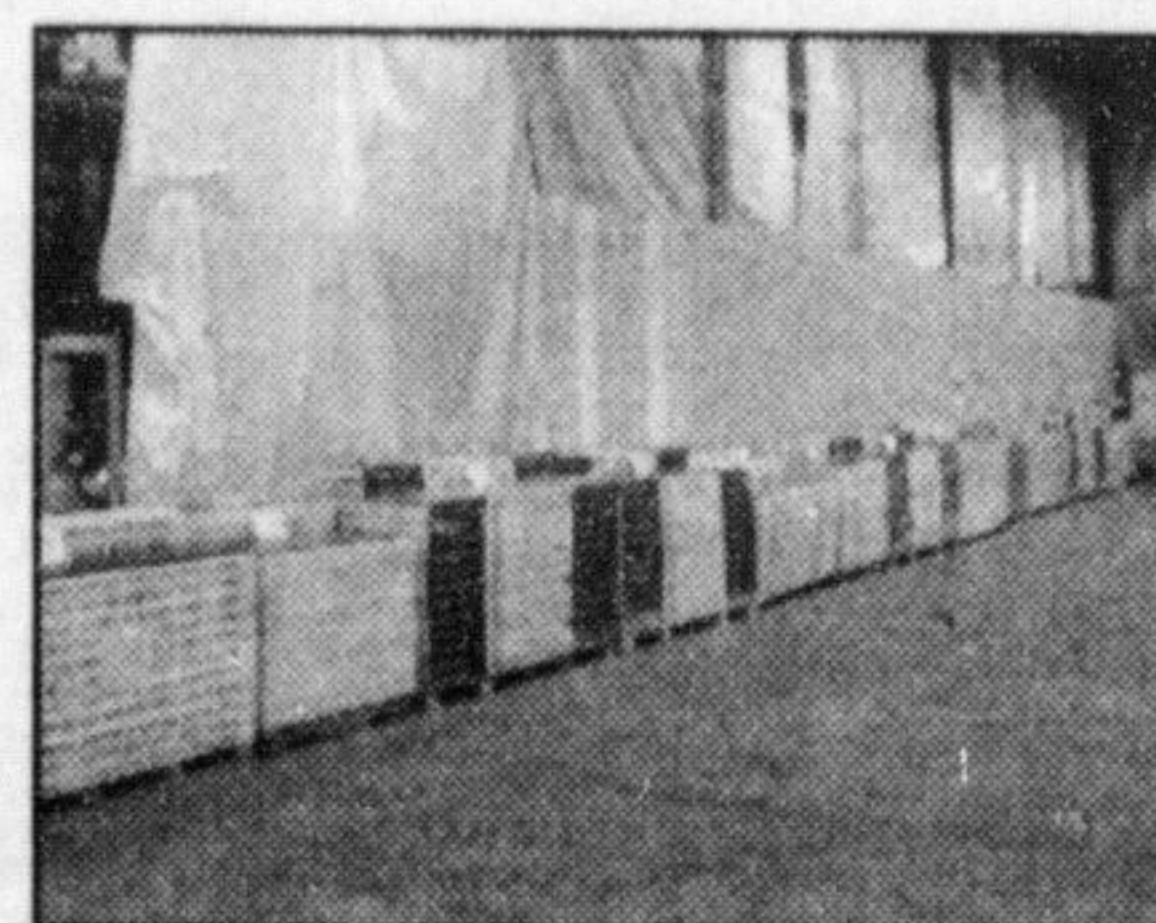
# PUBLIC AUCTION

## HARDWOOD AND LAMINATE FLOORING

**LOCATION: 3620B LAIRD ROAD UNIT #6, MISSISSAUGA ON**  
**SATURDAY MAY 9th, 2009 at 11:00 AM**

**PREVIEW: Fri. May 8th • 12 Noon - 4pm & Day of Sale from 9 am**

**UNRESERVED AUCTION, NO MINIMUM BIDS • OVER 50,000 SQ FT**



You loved the last one so top quality Hardwood Flooring for less is back. This Auction will feature Top Quality 3/4" Pre Finished nail down hardwood flooring and will be sold regardless of Cost or Loss. You can expect to see beautiful Oaks, Maples, Cherries, Black Walnut, Japanese Exotics, Bamboo, Birch, Golden Oaks in a large variety of Finishes including Hand Scraped and Wide Planks up to 5" wide. There will also be a nice selection of Laminates and Engineered

hardwood that can be laid right over Concrete. Both Feature an easy click together installation. The Engineered hardwood has a solid hardwood top that can be refinished up to 3 times.

Buy from the original Flooring Auction and the biggest and the best. We have sold over 2 Million square feet of flooring in the past 3 years. Our buyers return time and time again for excellent products and value.

BRING YOUR TRUCK, TRAILER OR CAR AND LOAD AND GO. All items must be removed the day of the sale! All flooring will be sold by the square foot to the highest bidder; BUY ONLY WHAT YOU NEED!

**CASH, VISA, MASTERCARD & DEBIT • STANDARD 15% BUYERS PREMIUM APPLIES**

FOR MORE INFORMATION PLEASE VISIT ONLINE AT [WWW.FLOORAUCTION.CA](http://WWW.FLOORAUCTION.CA)



**905-820-0555**

**INTRODUCING THE ALL-NEW 2010 MAZDA3. ZOOM-ZOOM. FOREVER.**

**Unexpected-in-class features include:**

- Dual-zone automatic climate controls.
- 8-way power-adjustable driver's seat with memory function.
- Bluetooth® hands-free phone integration with Audio Profile.
- Intelligent keyless entry with push-button start.

**Advanced safety features include:**

- Front/side-impact air bags, side-impact air curtains.
- Anti-lock Brake System (ABS), brake assist and Electronic Brake Force Distribution (EBFD).
- Dynamic Stability Control (DSC).
- Traction Control System (TCS).
- Front active headrests.

**Insightful and unique-in-class features make MAZDA3 the segment leader in technology and innovation.**

**First-in-class features include:**

- Adaptive Front Lighting System (AFS).
- Bi-xenon (HID) headlights.
- 10-speaker premium Bose® Surround Sound System.
- Multi-information Display (MID) with colour compact navigation system.
- Rain-sensing windshield wipers.

Inside and out, high-quality workmanship is evident throughout the MAZDA3. High-contrast cut lines improve interior appearance and quality. Sequential LED illumination.

For those with upgraded expectations, the MAZDA3 continues to raise the bar among the compact sedan category - through its revolutionary design, exceptional quality and, of course, the exhilarating feeling of Zoom-Zoom.

**2010 MAZDA3 STARTING FROM \$15,995**

**2010 MAZDA3 SPORT STARTING FROM \$16,995**



357 Queen St., Halton Hills (Acton)  
 ON L7J 1R1

PHONE: (519) 853-0200 or (866) 620-3248

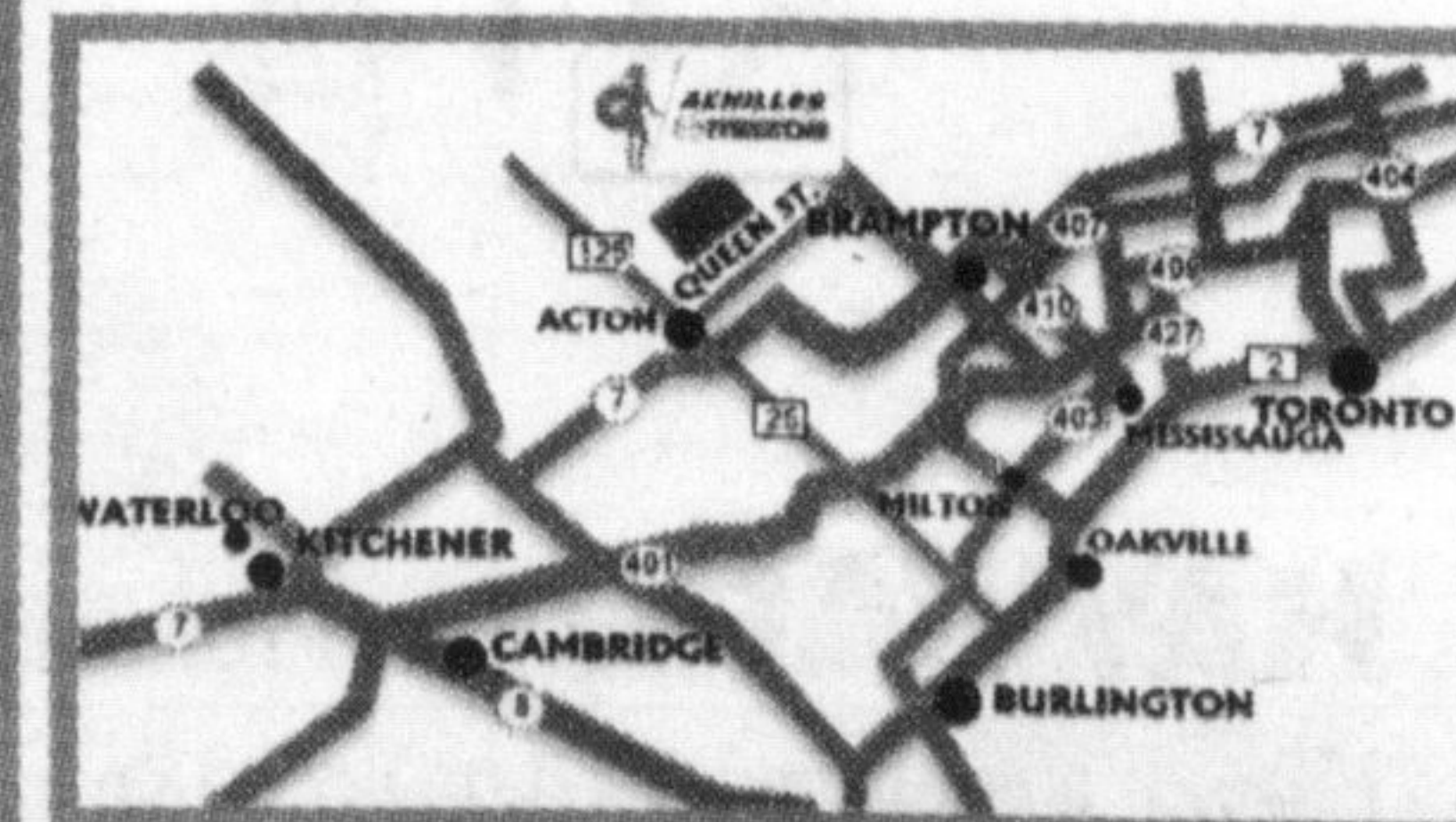
SALES: Monday-Thursday: 9AM - 9PM  
 Friday: 9AM - 6PM  
 Saturday: 9AM - 6PM

SERVICE: Monday-Wednesday: 8AM - 5PM  
 Thursday: 8AM - 8PM  
 Friday: 8AM - 5PM  
 Saturday: 8AM - 3PM

WEB: [www.achillesmazda.ca](http://www.achillesmazda.ca)

- ✓ LOCAL RESIDENT?
- ✓ CURRENT MAZDA OWNER?
- ✓ CONSIDERING A NEW CAR ?

EXPERIENCE THE ACHILLES MAZDA ADVANTAGE



Only minutes from Milton and Georgetown  
 Proudly Serving Halton Hills for over 30 Years!