

OPINION

Remember, it's 'pandemic,' not 'panic': Swine Flu

We sincerely hope, in the wake of the worldwide Swine Flu outbreak, that local residents don't mistake the word pandemic for panic.

According to the World Health Organization's (WHO) six-stage alert system, "a pandemic is an unexpected outbreak of disease that spreads from person to person across borders. Pandemics occur when a new influenza A-type virus, to which almost no one has natural immunity, emerges and spreads internationally."

And while the fact that Ontario has confirmed cases of Swine Flu brings the issue a little closer to home, local residents should be aware that WHO Assistant Director General Dr. Keiji Fukado has stated "we are not there yet (a pandemic)."

Residents should also keep in mind that Halton Region has had in place, for a number of years, a response plan for any potential flu pandemic.

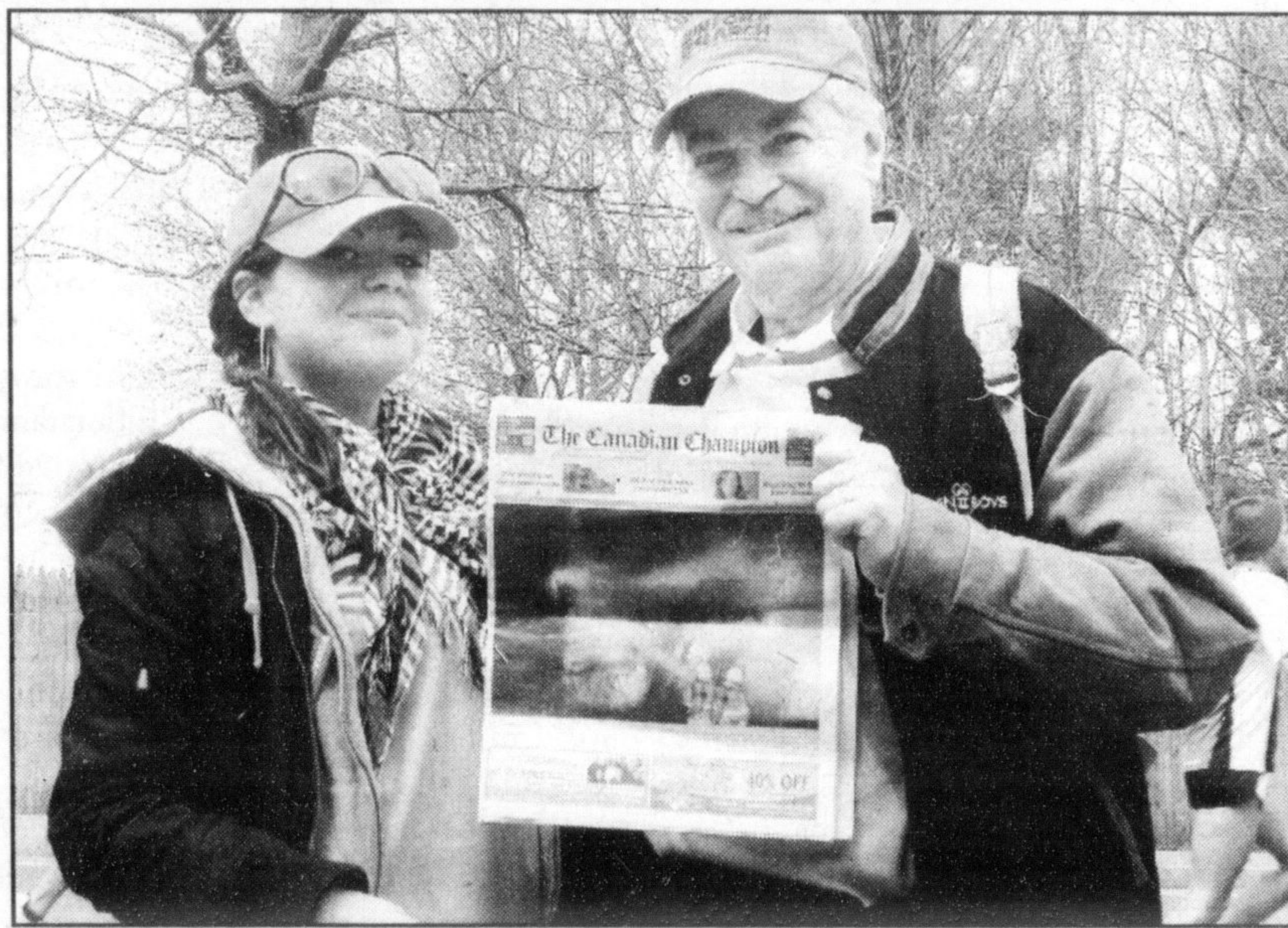
According to Halton Medical Officer of Health Dr. Bob Nosal, the Region's health department has been diligently monitoring area hospitals and requesting daily information on patients with severe respiratory illnesses.

The department has also set up a webpage for information on the new virus at http://www.halton.ca/health/services/communicable_disease/swine-flu.htm.

Despite the name, Swine Flu is spread through human contact, not eating pork products, and Nosal recommends typical measures to avoid spreading the flu — frequent hand washing, coughing into a sleeve and sneezing into a tissue and disposing of the tissue immediately.

To date our local health department and both provincial and federal governments have been pro-active in dealing with this matter.

We trust they will continue to be until this outbreak has been controlled.



MAKING TRACKS: Miltonians Caitlin and Lorne Greenwood show a copy of the *Champion* while cheering on Ashley Greenwood at the Boston Marathon, which she successfully completed in her marathon debut. Take your community newspaper on your next vacation and send your 'Champion Tracks' photos to editorial@miltoncanadianchampion.com. Be sure to include destination information and everyone's names.

ReadersWrite

E-mail letters to editorial@miltoncanadianchampion.com. Letters, which may be edited, must include the writer's name, address and phone number.

Thanks to all who supported book sale

DEAR EDITOR:

On behalf of the Canadian Federation of University Women, Milton and District chapter, we would like to offer our heartfelt thanks to all of the people who donated books and came to our used book sale this year.

As a result of your generosity, we have again raised a substantial amount for our scholarship fund.

We would like to thank the *Champion*, Milton Public Library, Zellers, Milton Mall and all the volunteers — both students and adults — who helped collect, sort and sell books.

We hope to see you again next year.
**JEAN LILLIE, KATHY SELLERS,
 PATTY WILCOX, YFKE PASMAM
 AND CHERYL HALES
 BOOK SALE COMMITTEE**

Upfront

Trapped? Yes. In any kind of real trouble? Hardly

Being trapped in an elevator can be a scary, exciting, life-altering experience.

In the movies or on TV, perhaps. In reality, about the only thing you're at risk of is utter boredom.

At least that was the case for your local sports scribe, who, just as Saturday evening's wicked winds began, made the rather foolish decision to use the elevator on my way home.

You guessed it, just a few seconds before reaching my seventh-floor destination the power went out and I was thrust into complete darkness.

After letting out the obligatory foul-mouthed response, I calmly waited for what I was sure would be a quick return of electricity — which of course didn't happen.

A few minutes later I started yelling out for help, and proceeded to amp up the volume when I realized my shouts were a little too subtle to have the desired effect.

It wasn't long before the fire department was on the scene, but since I was in absolutely no danger — I'm not the least bit claustrophobic and I didn't even need to use the bathroom — the decision was made to wait for the elevator repairman.

Breaking down the door was an option, but simply wasn't necessary in this case.

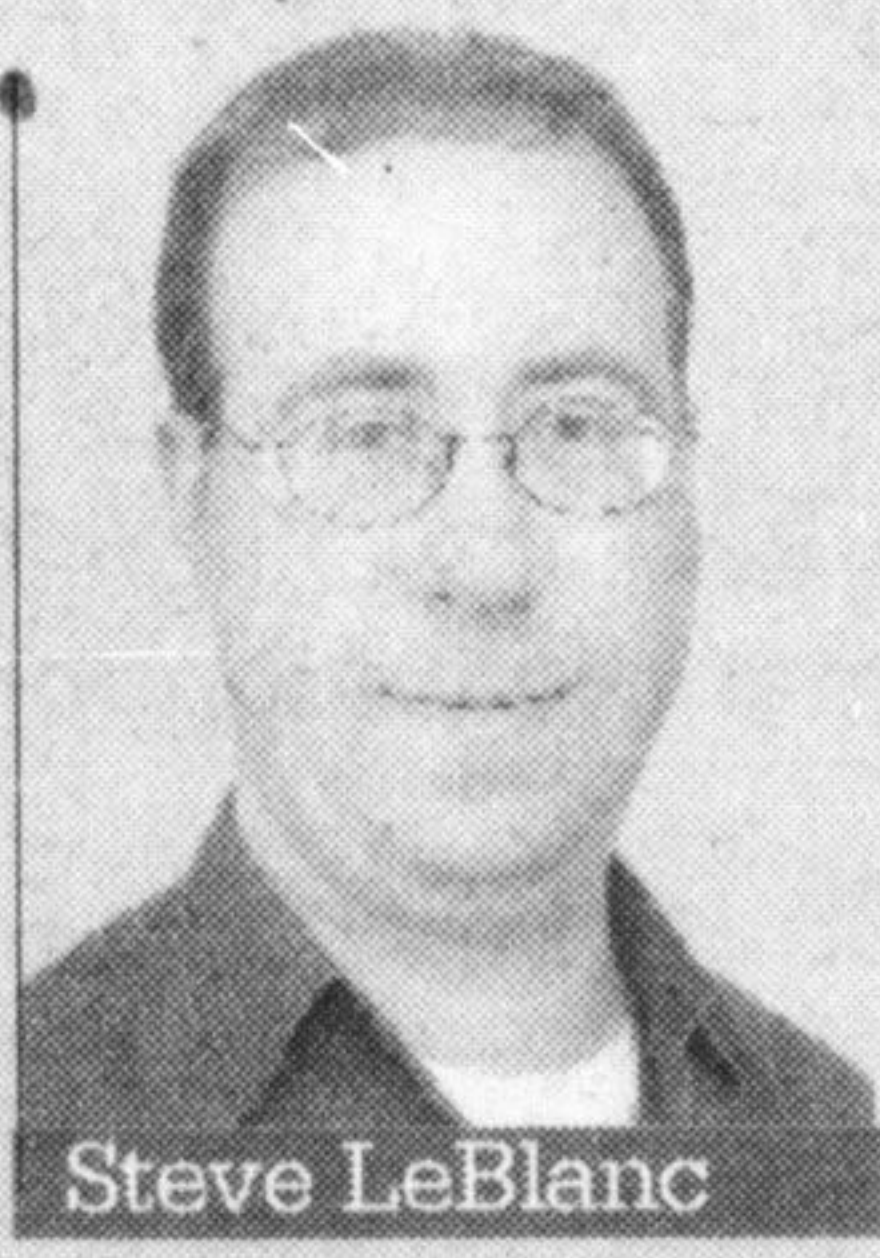
It's worth noting that contrary to what movies and TV may have us believe, malfunctioning elevators aren't prone to sudden

life-threatening descents, so there really wasn't a safety issue.

Okay, I'll admit I let out a momentary gasp when I was told it would be about 45 minutes for the repairman to arrive from Toronto or wherever.

Hey, most people will admit a 45-second elevator ride sometimes seems long (if you're in a hurry or have to make painful small talk), so the idea of spending more than an hour in total in a roughly six-by-four-foot enclosed space with no lights seemed a bit of an ordeal.

Perhaps it would have been if the lights hadn't come back on about a half-hour later



Steve LeBlanc

• see CONVERSATION on page A7

The Canadian Champion
 Milton's Community Newspaper Since 1860
 555 Industrial Dr.,
 Milton, Ont. L9T 5E1
905-878-2341
 Editorial Fax: 905-878-4943
 Advertising Fax: 905-876-2364
 Classified: 905-875-3300
 Circulation: 905-878-5947
www.miltoncanadianchampion.com

V.P. — Group Publisher
 Neil Oliver
General Manager
 David Harvey
Editor in Chief
 Jill Davis
Managing Editor
 Karen Miceli
Advertising Director
 Debbi Koppejan
Production Manager
 Tim Coles
Circulation Manager
 Charlene Hall
Office Manager
 Sandy Pare

The Canadian Champion, published every Wednesday and Friday, is a division of Metroland Media Group Ltd.

Advertising is accepted on the condition that, in the event of a typographical error, that portion of the advertising space occupied by the erroneous item, together with a reasonable allowance for signature, will not be charged for, but the balance of the advertisement will be paid for at the applicable rate. The publisher reserves the right to categorize advertisements or decline.

CCAB Audited

Recognized for excellence by



The Canadian Champion is a proud media sponsor for:



The Milton Canadian Champion is a Recyclable Product