



The Regional  
Municipality of Halton  
www.halton.ca

## Raising Competent Teens

Triple P Seminar for Parents of Pre-Teens and Teens

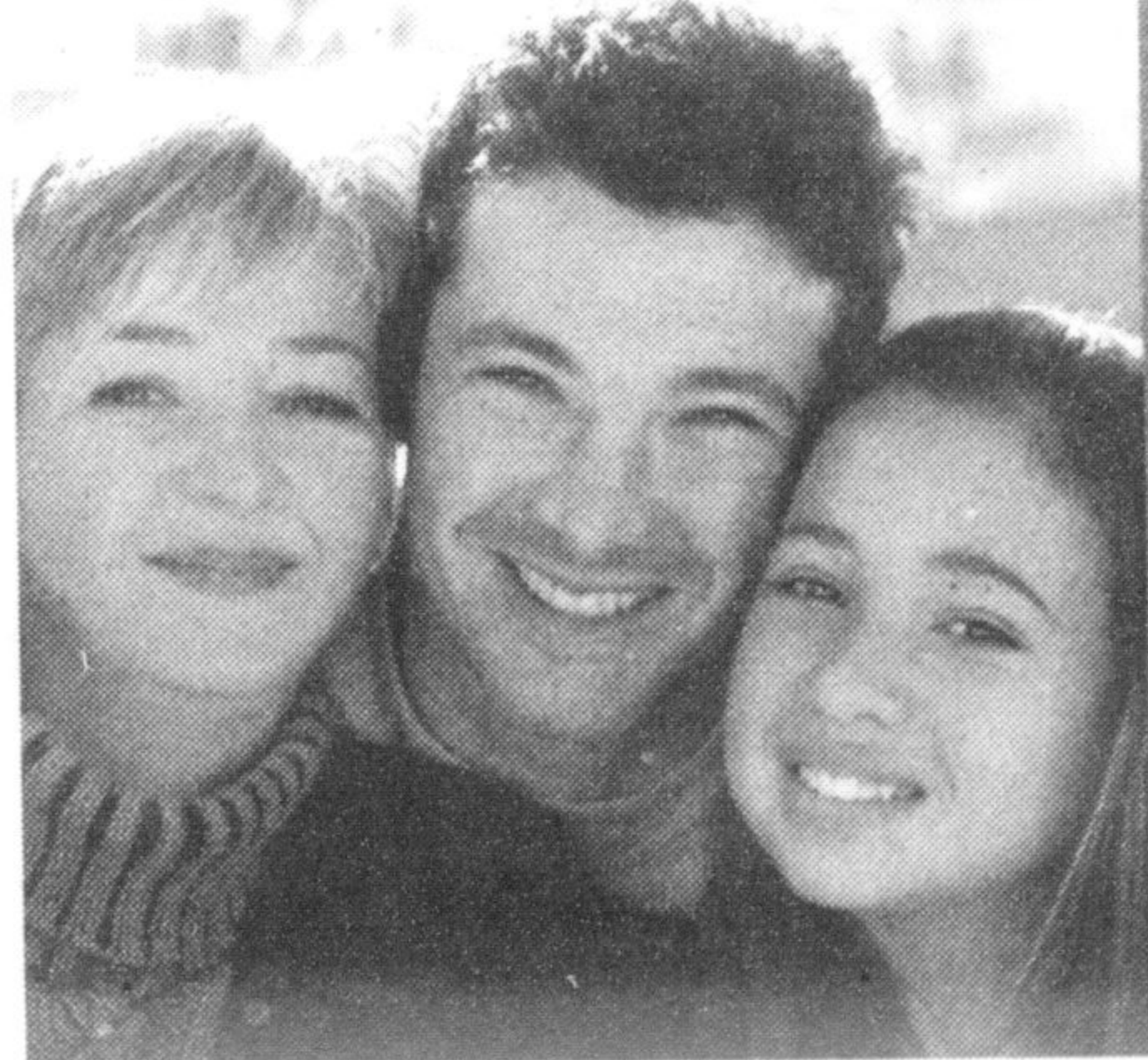
All parents can benefit from additional support.

### Parents, learn how to help your teen:

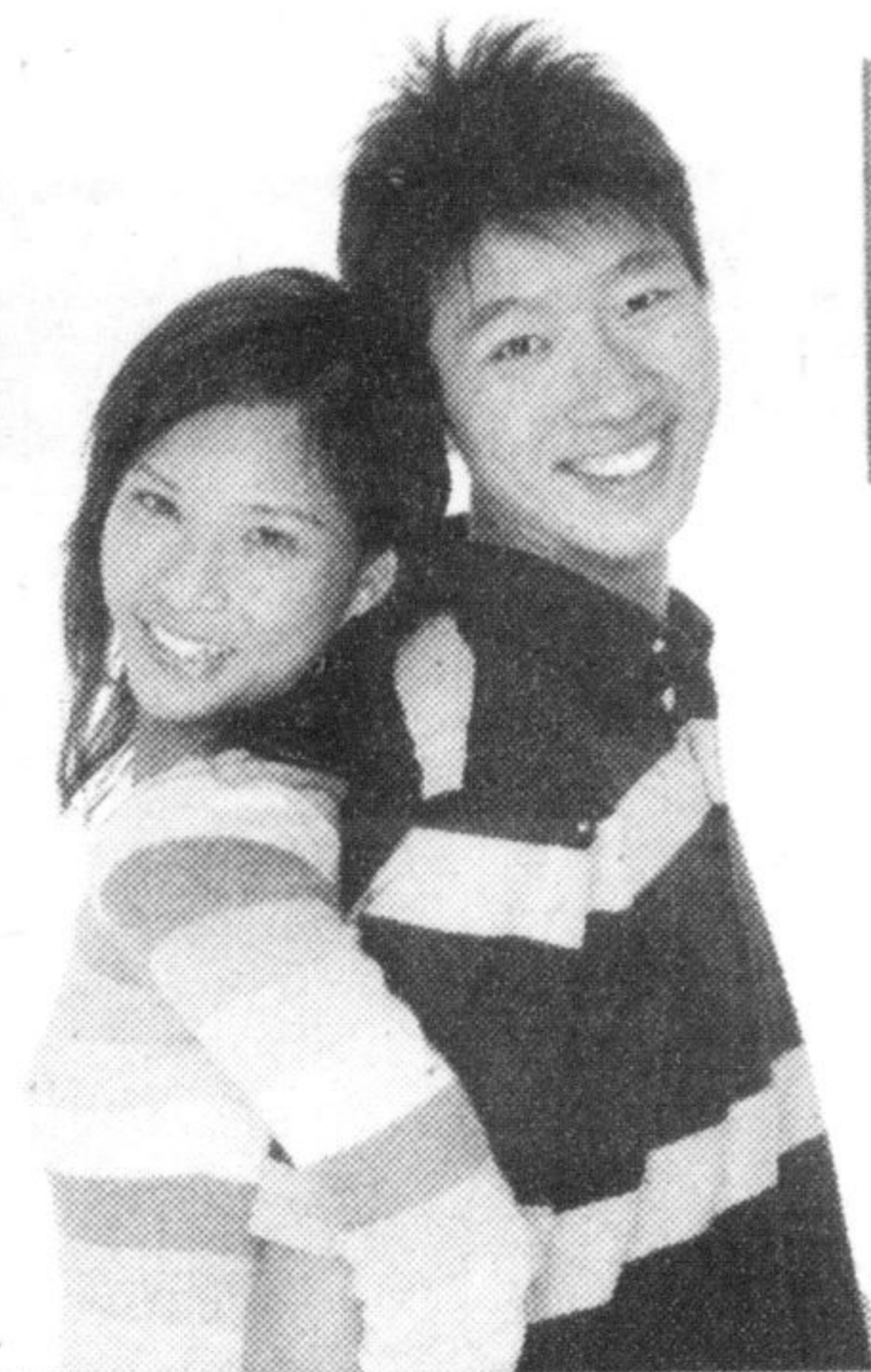
- establish routines
- get involved in school activities
- develop self discipline
- become a good problem solver

### What is Triple P?

- **Positive Parenting Program** supported by research and led by accredited practitioners
- Helps you learn adaptable skills to develop good communication and strong relationships with your children



Children and youth who grow up with positive parenting are more likely to feel good about themselves and develop to their full potential.



**Where:** Library, E. C. Drury High School  
215 Ontario Street South, Milton

**When:** Thursday, April 16, 2009, 7:00 - 8:30 p.m.

#### Registration

To register for this **free** Triple P seminar, or for more information, please contact Halton Region.

In case of inclement weather please call Halton Region for program cancellations and rescheduling.



The Halton Resource Connection presents:

## Open House about Home Child Care

If you provide child care in your home or if you are a parent who wants to learn more about home child care options, come to this exciting event created just for you!

The event is free and features information booths from a variety of groups in Halton that provide services to children and families.

**Thursday, April 23, 2009**

**6:30 - 8:30 p.m.**

**Milton Community Resource Centre  
410 Bronte Street South, Milton**

For more information contact:  
The Halton Resource Connection  
905-875-4600  
Email: info@thrc.ca www.thrc.ca

1151 Bronte Road, Oakville, Ontario L6M 3L1  
Dial 311 or 905-825-6000 • Toll Free 1-866-442-5866 • TTY 905-827-9833 • www.halton.ca

# Local fundraising needed

• from DONT on page 1

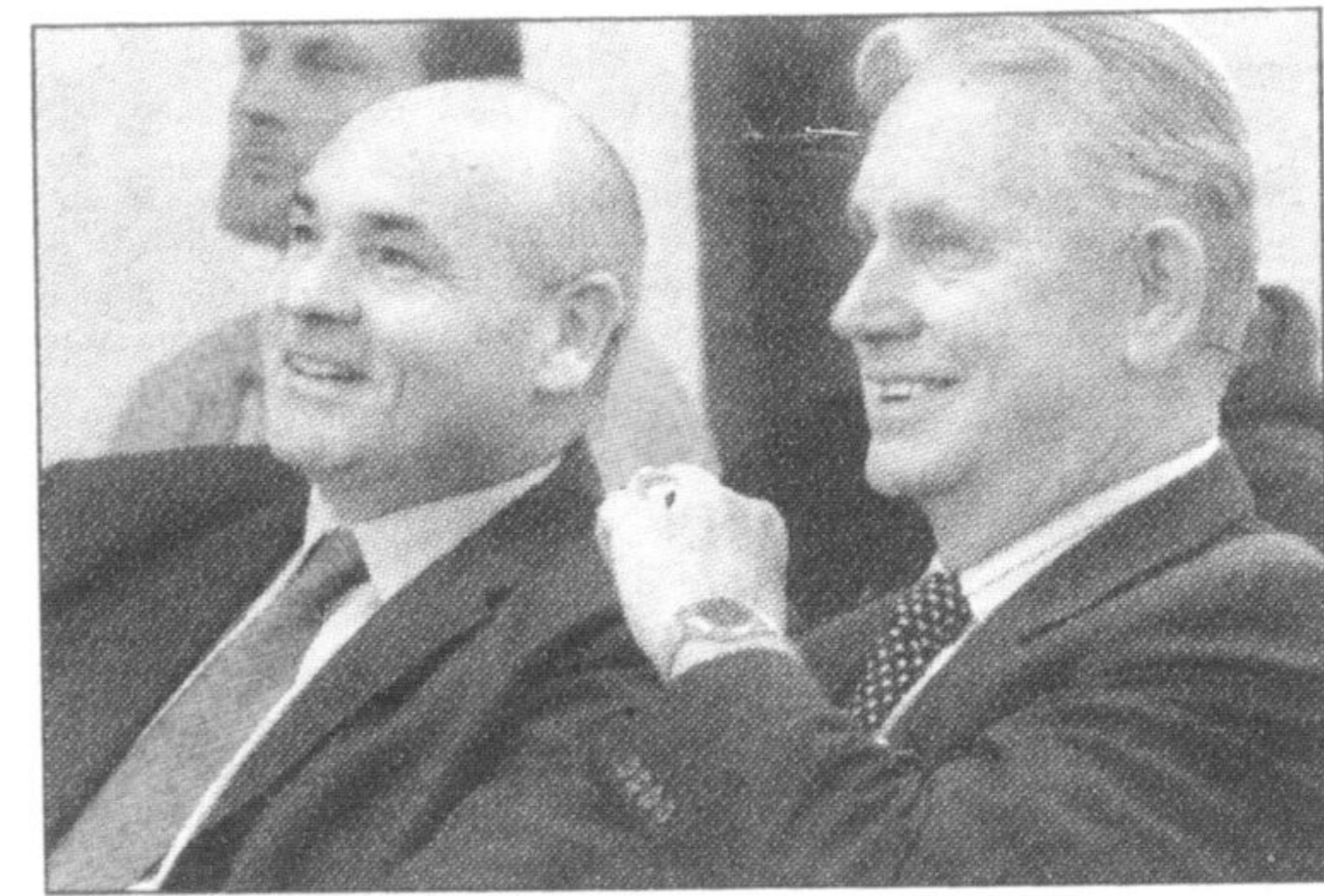
enthusiasm and doesn't inspire citizens to come forward with necessary dollars when the expansion is agreed to and community fundraising is necessary, he said.

He pointed out the Province only pays for 90 per cent of the bricks and mortar of a hospital expansion, with the community covering the remainder. The hospital and the locale also have to pay for 100 per cent of all hospital equipment. "These things are extraordinarily expensive," Smitherman said. "If you can demonstrate to the government that you have the financial wherewithal to support the project, that helps."

Both Pomeroy and Ward 3 Councillor Cindy Lunau, who also sits on the committee, said it was clear what Smitherman was telling them. Both said previous efforts by Regional Chair Gary Carr and Halton MPP Ted Chudleigh to secure an expansion of the hospital through criticism of the government haven't worked and that a more positive approach is necessary.

When asked whether it's not the job of Chudleigh, as a member of the opposition to criticize government decisions, Pomeroy responded: "One of your responsibilities as a political representative is to view and judge whether your position has been helpful."

On the financial front, Pomeroy and Lunau construed Smitherman's inference to mean a dedicated portion of property taxes to help cover hospital infrastructure projects will be necessary along with community fundraising. Both believe such a measure, already enacted by York Region, should be



GRAHAM PAINE / CANADIAN CHAMPION

Ontario Energy and Infrastructure Minister George Smitherman (left) and Milton Mayor Gord Krantz watch a presentation on Smart Meters at Milton Hydro on Main Street Tuesday. done at a regional level.

Unfortunately for local politicians, the Province hasn't yet given the green light to detailed design of the Milton hospital expansion, meaning the hospital doesn't know how much local money will even be required.

Smitherman acknowledged the chicken and the egg scenario, but added: "It's hard to have too much. So raise money early and often."

Regional councillors will soon tackle the contentious issue of funding hospital projects through the property tax bill. Regional staff plans to submit a report to the administration and finance committee within the next two months reviewing a local funding proposal for hospital development consisting of 20 per cent fundraising and 80 per cent municipal taxation over a 20-year period.

Tim Foran can be reached at tforan@miltoncanadianchampion.com.



## The Corporation of the Town of Milton

905-878-7252 TTY: 905-878-1657

1-800-418-5494 • Rockwood/Guelph

www.milton.ca

## Public Input Session Three Parks



Help shape the future of a park  
in your neighbourhood!

**Wednesday, April 15, 2009, 6:30 - 8:30 pm**

Milton Sports Centre, Meeting Room 3  
605 Santa Maria Blvd.

Your input is needed to create design concepts.

#### Brian Best Park (existing)

Presentation at 7:00 pm

Located at Commercial Street and Parkway Drive; set to undergo redevelopment in future years

#### Harrison Neighbourhood Park (new)

Presentation at 7:15 pm

To be developed on land south of Derry Road and west of Scott Boulevard

#### Coates Neighbourhood Park South (new)

Presentation at 7:30 pm

To be developed on land south of Derry Road and west of Thompson Road

#### Provide input online

If you are unable to attend, you can still provide us with your ideas and suggestions. You will be able to submit your comments online at [www.milton.ca](http://www.milton.ca) after the session and until April 25.

[www.milton.ca](http://www.milton.ca) 905-878-7252, ext. 2211