

# Stratton to stage Herbert tribute

He has been called America's first musical superstar. And his music is coming to a stage near you.

Victor Herbert's songs are full of happiness, energy and joy. To celebrate the 150th anniversary of the composer's birth, Milton Concert Presentations will host 'The Great American Love Song — Kerry Stratton's tribute to Victor Herbert.'

The concert will take place next Friday at 8 p.m. at St. Paul's United Church, 123 Main St. E.

Herbert's musical career spanned almost 50 years and gave birth to the operetta. Later, with the public's changing musical tastes, he began to focus on musicals.

Conductor Kerry Stratton will bring his Grand Salon, Palm Court Orchestra for the performance, which will feature highlights from Herbert's beloved musicals.

Tickets cost \$40 for adults, \$35 for seniors and \$30 for students and are available by calling (905) 878-1526. For more information, visit [www.miltonconcertpresentations.com](http://www.miltonconcertpresentations.com).

# Wine and cheese show this weekend

Looking for an event to savour?

Then you may want to swing by Mississauga's International Centre this weekend, where the 26th annual Toronto Wine and Cheese Show will be held.

The three-day event will feature interactive and informative wine appreciation seminars by internationally and locally-recognized wine and culinary professionals, including Ang and Pax of iYellow Wine Club and Toronto Star wine columnist Gord Stimmell.

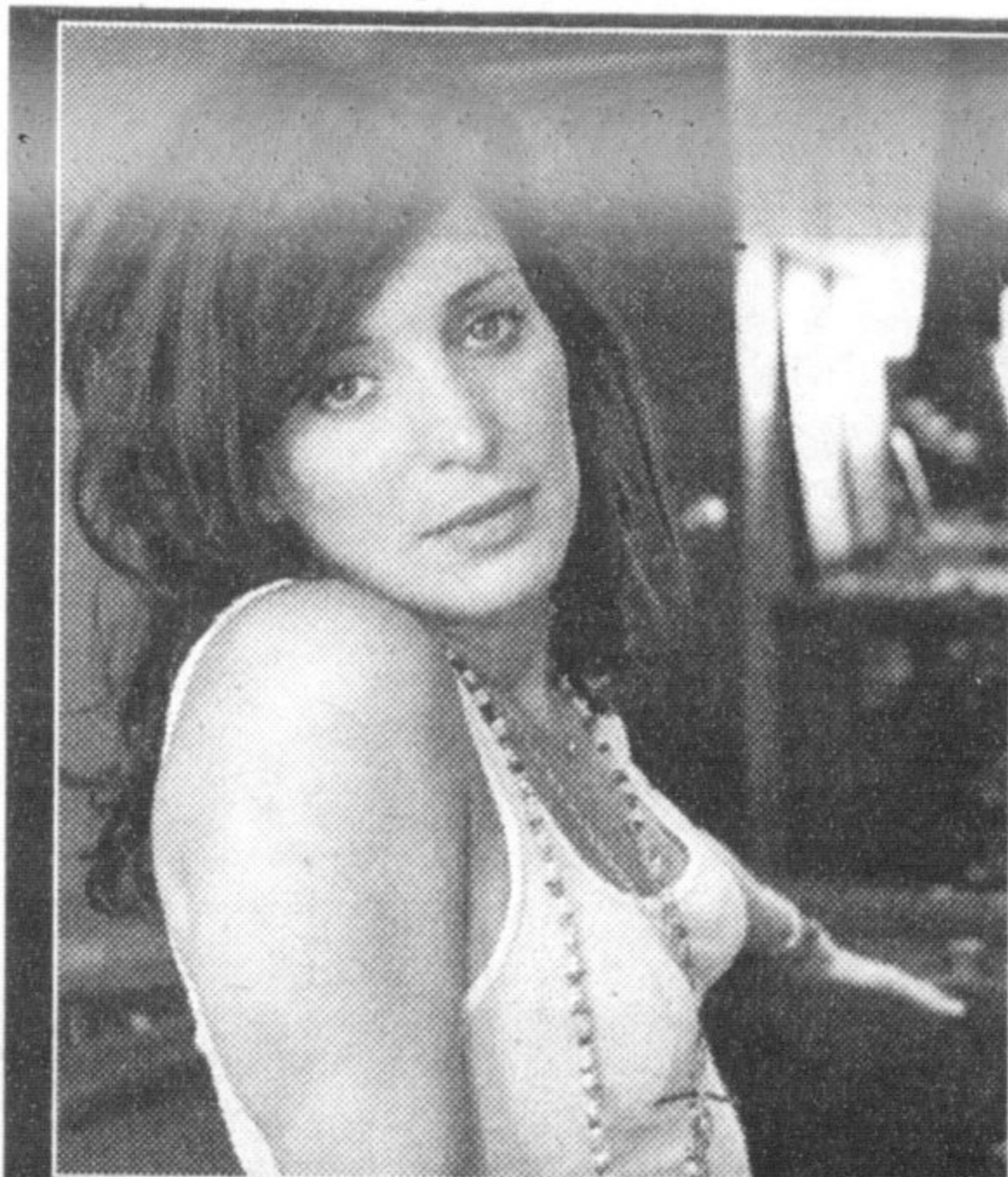
The show runs today from noon to 10 p.m., tomorrow from noon to 9 p.m. and Sunday from noon to 6 p.m. Tickets cost \$18 at the door. The International Centre is located at 6900 Airport Rd. at Derry Road. Free shuttle service from Kipling Station is available.



## FUTURE SHOP CORRECTION NOTICE

Sony LCD HDTV (42V4100) 10106324. On the March 13 flyer, page 12, this product is advertised with incorrect specifications. Please note that it should be 60Hz refresh rate with a 25,000:1 contrast ratio.

We sincerely apologize for any inconvenience this may have caused our valued customers.



## CHANTAL KREVIAZUK

April 6 at 8pm, Hamilton Place

Tickets available at

The Copps Coliseum Box Office

Order online at [ticketmaster.ca](http://ticketmaster.ca)

or call 905 527-7666 [hccfi.ca](http://hccfi.ca)

**Galaxy Milton**

1175 MAPLE AVE. T. 905-864-1666  
WHEELCHAIR ACCESS • PARTY ROOMS  
STADIUM SEATING • 8 SCREENS

Advance tickets available at [Cineplex.com](http://Cineplex.com)

**I LOVE YOU, MAN (14A)**  
(CRUDE CONTENT, SEXUAL CONTENT, COARSE LANGUAGE) NO PASSES FRI-SUN 1:10, 4:10, 7:10, 10:00; MON-THURS 7:10, 10:00  
STAR & STROLLERS SCREENING, NO PASSES THURS 1:00

**DUPLICITY (PG)**  
(LANGUAGE MAY OFFEND, MATURE THEME) RW@/DVS@ NO PASSES  
FRI-SUN 12:30, 3:30, 6:30, 9:30; MON-THURS 6:30, 9:30  
STARS & STROLLERS, RW@/DVS@ NO PASSES THURS 1:00

**KNOWING (14A)**  
(VIOLENCE, DISTURBING CONTENT)  
FRI-SUN 12:45, 3:45, 6:50, 9:50; MON-THURS 6:50, 9:50

**RACE TO WITCH MOUNTAIN (PG)**  
(VIOLENCE) FRI-SUN 1:20, 4:00, 6:45, 9:20; MON-THURS 6:45, 9:20

**THE LAST HOUSE ON THE LEFT (18A)**  
(BRUTAL VIOLENCE, SUBSTANCE ABUSE, SEXUAL CONTENT)  
FRI-SUN 12:50, 3:50, 7:00, 10:10; MON-THURS 7:00, 10:10

**WATCHMEN (18A)**  
(SEXUAL CONTENT, COARSE LANGUAGE, BRUTAL VIOLENCE)  
FRI-SUN 1:00, 4:30, 8:00; MON-THURS 8:00

**FIRED UP (PG)**  
(LANGUAGE MAY OFFEND) FRI-SUN 1:30, 7:20; MON-THURS 7:20

**TAKEN (14A)**  
(VIOLENCE) FRI-SUN 4:20, 9:40; MON-THURS 9:40

**SLUMDOG MILLIONAIRE (14A)**  
(VIOLENCE, LANGUAGE MAY OFFEND)  
FRI-SUN 12:40, 3:40, 6:40, 9:45; MON-THURS 6:40, 9:45

Showtimes for Friday March 20, 2009 to Thursday March 26, 2009

# BUY CANADIAN

**CUSHION TOP**  
Best Value **\$399** Queen Set  
11 Year Warranty  
Twin Set 289 • Double Set 349 • King Set 569

**COUPON**  
2 FREE CHOICES  
• Bed Frame • Mattress Pad  
• Bed Rails • Comforter • Set Up  
• 2 Pillows • Sheet Straps  
• Disposal of Old Set • Sheets  
With Any Mattress Set Purchased

**OR**

**COUPON**  
NO GST  
NO PST  
With Any Mattress Set Purchased

**OR**

**COUPON**  
3 FREE CHOICES  
• Bed Frame • Mattress Pad • Bed Rails  
• Comforter • Set Up • 2 Pillows • Sheet Straps  
• Disposal of Old Set • Sheets • Local Delivery  
With Any Mattress Set Purchased Over \$500

<p><b>Rest Master</b></p> <p>SINGLE MATTRESS Single Set 519 Double 379 Set 589 Queen 449 Set 679 King 629 Set 1059 <b>\$329</b> 25 Year Warranty</p>	<p><b>Orthopedic Euro</b></p> <p>SINGLE MATTRESS Single Set 399 Double 289 Set 449 Queen 329 Set 499 King 499 Set 799 <b>\$259</b> 25 Year Warranty</p>	<p><b>Cosy Rest</b></p> <p>SINGLE MATTRESS Single Set 259 Double 179 Set 309 Queen 209 Set 359 <b>\$149</b> 10 Year Warranty</p>
<p><b>BUNK BEDS</b></p> <p>WOOD Natural or Maple <b>\$239</b></p>	<p><b>ELECTRIC BEDS</b></p> <p>BRONZE w/Spring Matt. <b>\$989</b></p>	<p><b>IRON BEDS</b></p> <p>SPYDER Black Finish <b>\$109</b></p>
<p><b>FUTON</b> Black Iron <b>\$249</b></p>	<p><b>ELECTRIC BEDS</b></p> <p>GOLD w/Memory Foam <b>\$1199</b></p>	<p><b>IRON BEDS</b></p> <p>NATALIE White Finish <b>\$149</b></p>
<p><b>PANEL</b> Pine Finish <b>\$319</b></p>	<p><b>CLEARANCE ITEMS</b></p> <p><b>DOOR CRASHER!</b></p> <p><b>MEMORY FOAM 10" PILLOW TOP</b></p> <p>TWIN X-LONG \$229 QUEEN \$369</p>	<p><b>IRON BEDS</b></p> <p>IMPERIAL Copper Finish <b>\$169</b></p>
<p><b>JR. 7 PC. SUITE</b> Maple or Pine <b>\$829</b></p>	<p><b>ADULT 7 PC. SUITE</b> Walnut <b>\$1079</b></p>	
<p><b>FUTON COVERS</b> Various Colours 34</p>	<p><b>SHEET SETS</b> Twin Double 16 19 Queen King 22 26</p>	<p><b>PROTECT-A-BED</b> Twin Double 59 89 Queen King 79 89</p>
<p><b>REGULAR MATTRESS PAD</b> Twin Double 11 14 Queen King 19 25</p>	<p><b>ERGO MEMORY PILLOW</b> Standard Queen 29 39</p>	<p><b>POLY PILLOW</b> Standard Queen 5 10 King 15</p>

**MATTRESSES FROM \$59 • CUSTOM SIZED MATTRESSES**

**BURLINGTON**  
666 Appleby Line  
(Fairview / Appleby)  
Behind McDonald's  
**905-681-9020**

SINCE 1978

the **Sleep Factory**

[www.sleepfactory.com](http://www.sleepfactory.com)

**MILTON**  
238 Main St. E. MILTON  
(At Martin St.)  
Next to Scotia Bank  
**905-878-4606**

Monday - Thursday 10am - 6pm    Friday 10am - 8pm    Saturday 9am - 6pm    Sunday 11am - 5pm

## Quality licensed Child Care

Ages 6 Weeks - 6 Years

Spaces Available

**REGISTER TODAY!**

Drop in for a Tour Anytime.

featuring Video Over Internet

No Appointment Necessary.

Quality Child Care You Can See!

8611 Escarpment Way  
MILTON  
905-875-2255

For more information on any of our 17 Great Locations  
Visit: [www.peekabookid.com](http://www.peekabookid.com) Call: 1-866-607-PEEK (7335)