

# Tykes win away from 1st

It all comes down to tomorrow afternoon.

That's when the Winterhawk tykes can solidify top spot in Tri County regular-season play — needing a win against the Brampton Battalion at Milton Sports Centre to nudge past St. Catharines for first.

The odds look awfully good for Milton, which sits with a 20-2-1 record and dumped the same Brampton team 7-1 Tuesday night.



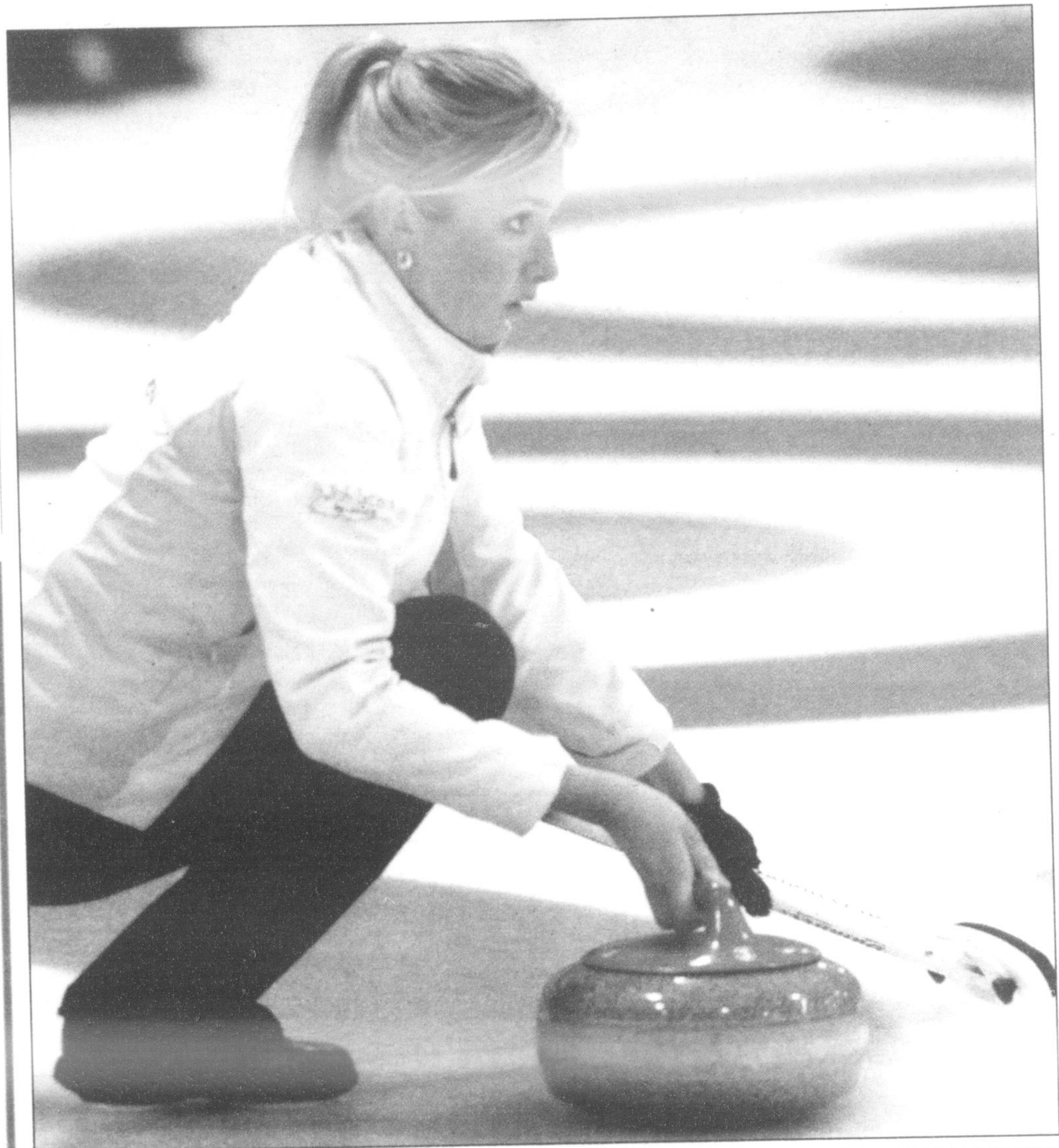
This marked the 15th time this season that the local tykes had held the opposition to a goal or less.

A tie might mean a one-game clash to determine top spot, since Milton and St. Catharines split their two-game series and would finish with the same number of wins.

Tomorrow's game is set for 2:30

p.m.

Regardless of the outcome, the tykes will once again finish with the best regular-season record of any local rep team.



MICHAEL IVANIN / SPECIAL TO THE CHAMPION

**ROCKIN' THE HOUSE:** The lead for Julie Reddick's Brant rink, Milton's Leigh Armstrong competes in opening-round play Monday at the Ontario Scotties Tournament of Hearts in Oakville. Reddick sat 3-4 as of last night, having dropped a seesaw 7-4 decision to Sherry Middaugh's Coldwater team — the defending provincial champs — yesterday afternoon. Middaugh's rink includes native Milton sisters Kirsten Wall and Andra Harmark, who play third and lead respectively. Middaugh was in a three-way tie for first at press time at 5-2, while Reddick needed to win her last two games for a shot at weekend play. The Ontario championships wrap up Sunday.



## The Corporation of the Town of Milton

905-878-7252 TTY: 905-878-1657  
1-800-418-5494 Z Rockwood/Guelph Z www.milton.ca

### Street Name and Address Change By-laws

In 2008, Milton Council approved a series of street name and addressing revisions (staff report PD-019-08). As your service provider, we cannot stress enough the importance of a consistent and logical addressing system in providing a timely emergency response and efficient municipal services and deliveries.

The recommended street name and/or address change by-laws for Phase 1 of this program are scheduled to go before Council for final consideration on **Monday, February 23, 2009.**

Staff report PD-013-09, which contains the list of street name and address changes for Phase 1 of this program, will be posted on the Town's website, [www.milton.ca](http://www.milton.ca) on Friday, February 20, 2009.

### Be Ready for Winter Weather

# Allow the Plow!

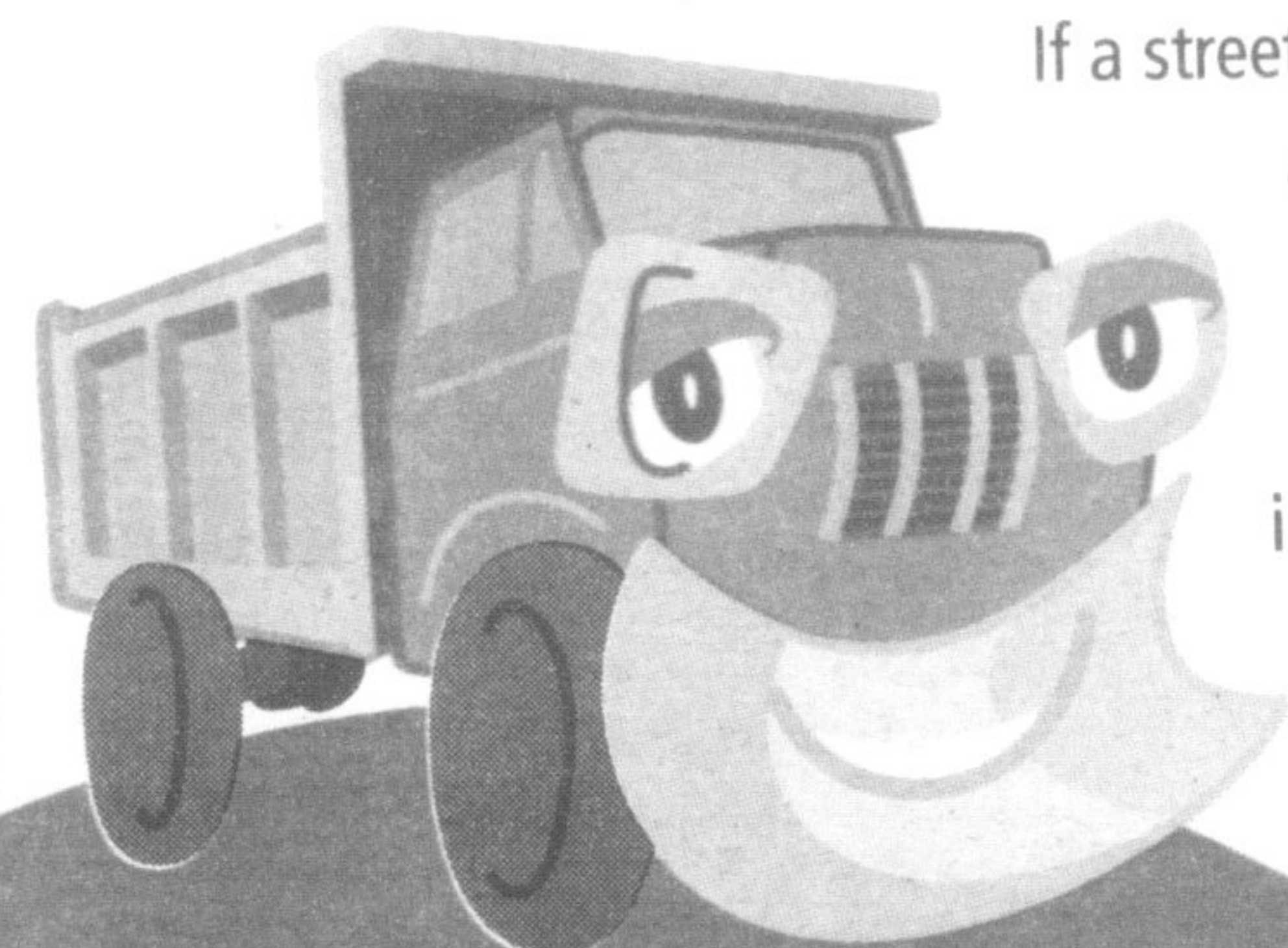
**We all want our streets cleared of snow quickly, but nothing slows down the work of snow plows more than cars parked on the street. Don't forget:**

- The parking by-law in the Town of Milton is three hours unless otherwise posted.
- Cars must be removed from the road during snow clearing operations (in which case the three hour parking limit does not apply).
- Vehicles found to be impeding snow clearing operations can be ticketed and towed at the owner's expense.
- Keeping parked cars off the street will speed up snow removal and increase community safety.

#### Road Plowing Response Times

Snow plowing response times range depending on the severity of the snow/ice storm and the priority of roads (Regional roads are plowed first, then major Town thoroughfares and finally local streets).

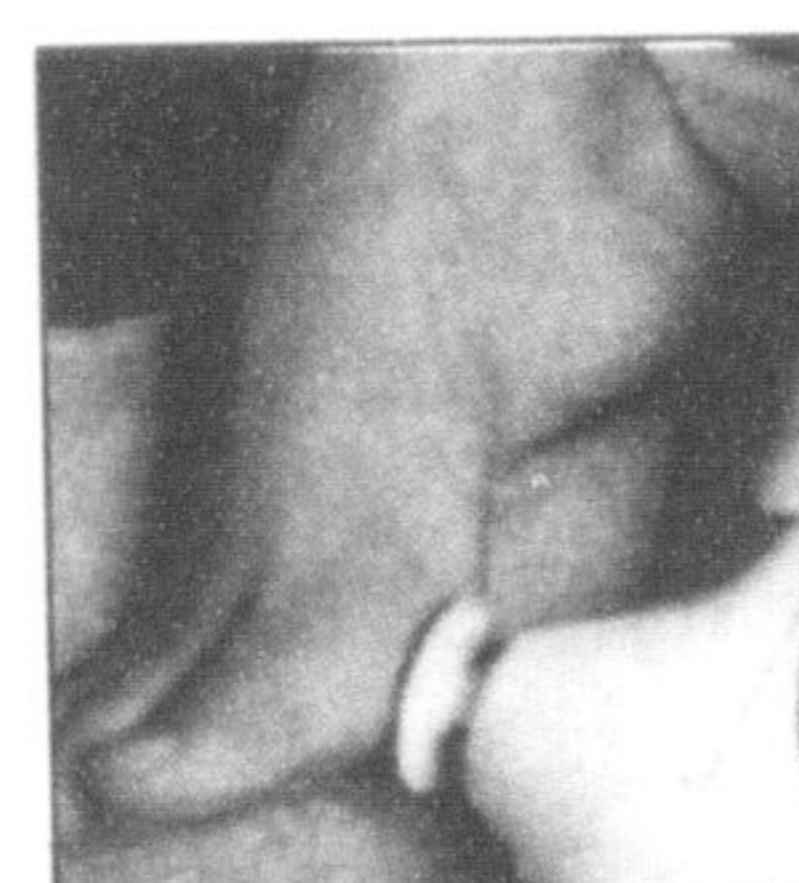
If a street has not been cleared within 24 hours after a storm has ended, please call the Snow Control office at 905-878-7252, ext. 2500. Please visit [www.milton.ca](http://www.milton.ca) for more information about Snow Control Services.



**This winter, please "Allow the Plow" to do its work!**

# Adjust to Home

Milton's Local Source for all Home Health Care Products



FOOT CARE



RECLINERS



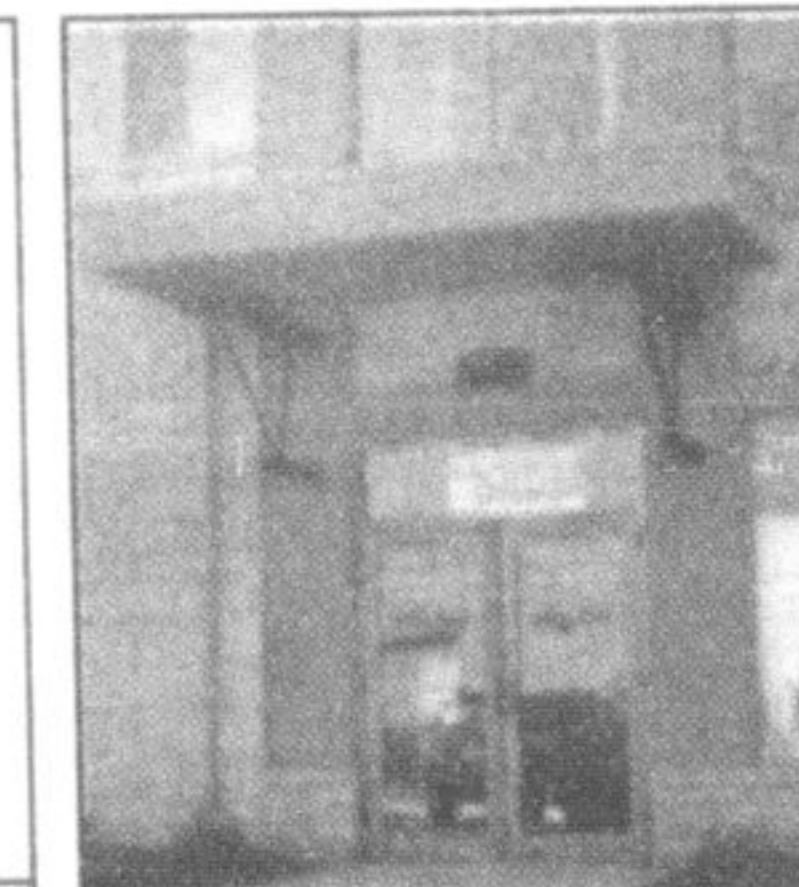
PILLOWS



SCOOTERS



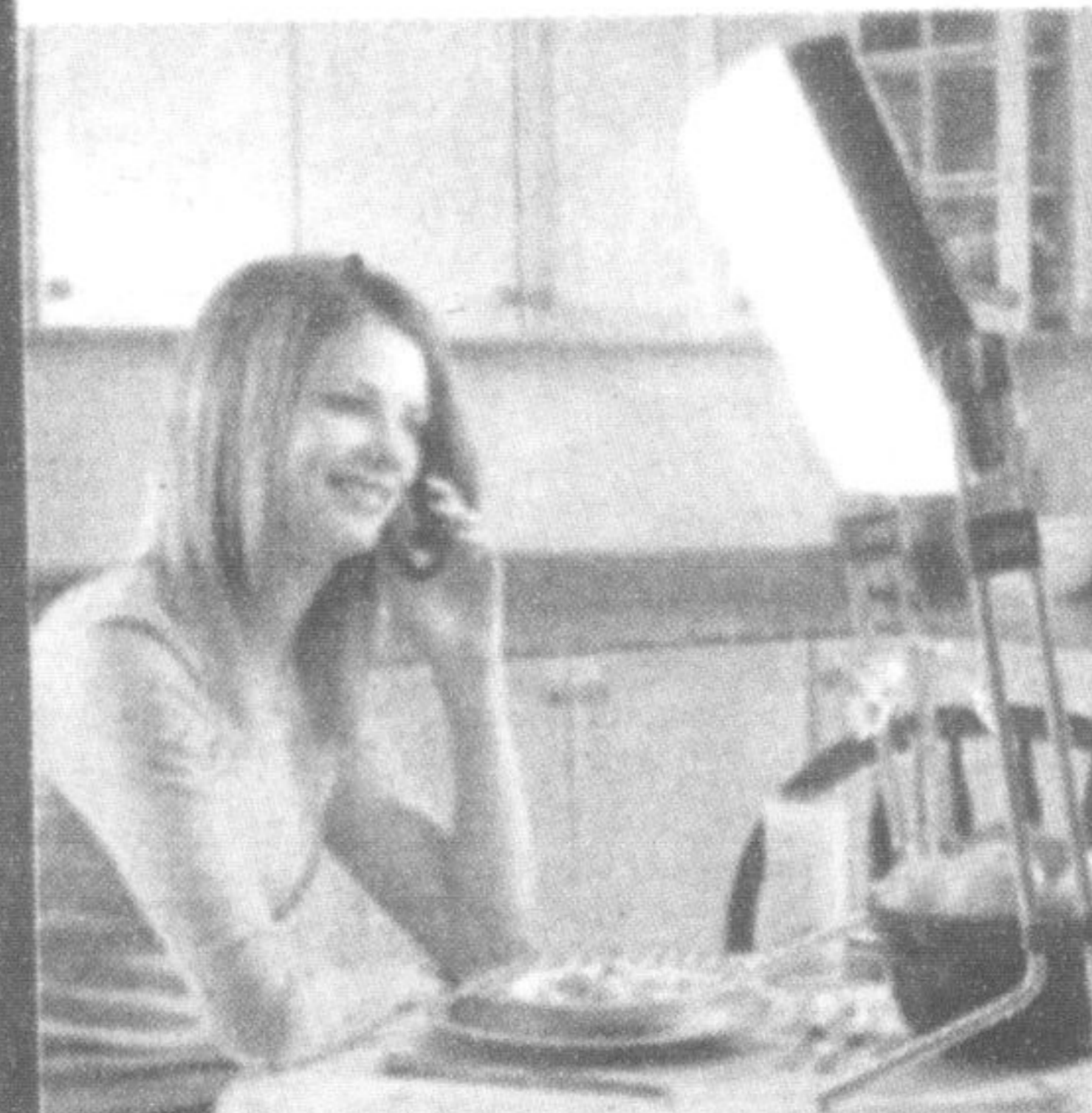
WHEELCHAIRS



### MANY PRODUCTS AVAILABLE:

- Medical Accessories for daily living in your home
- Wheelchairs
- Walkers
- Scooters
- Bathroom Accessories (ie. Tub Transfer benches)
- Crutches
- Medical Supplies
- Mastectomy & Ostomy Supplies

**...AND MUCH MORE!**



## Can't beat the Winter Blues?

**We carry various models of SAD Lights to help brighten your life.**

**Covered under most insurance plans.**

**400 Bronte Street South, Unit 108**  
**905.878.1142**

Located in the Bronte Corporate Centre • Minutes from the Milton District Hospital

**WE ARE OPEN**  
Monday 9:30 am to 5:30 pm  
Tuesday 9:30 am to 5:30 pm  
Wednesday 9:30 am to 5:30 pm  
Thursday 9:30 am to 5:30 pm  
Friday 9:30 am to 5:30 pm  
Saturday & Sunday CLOSED