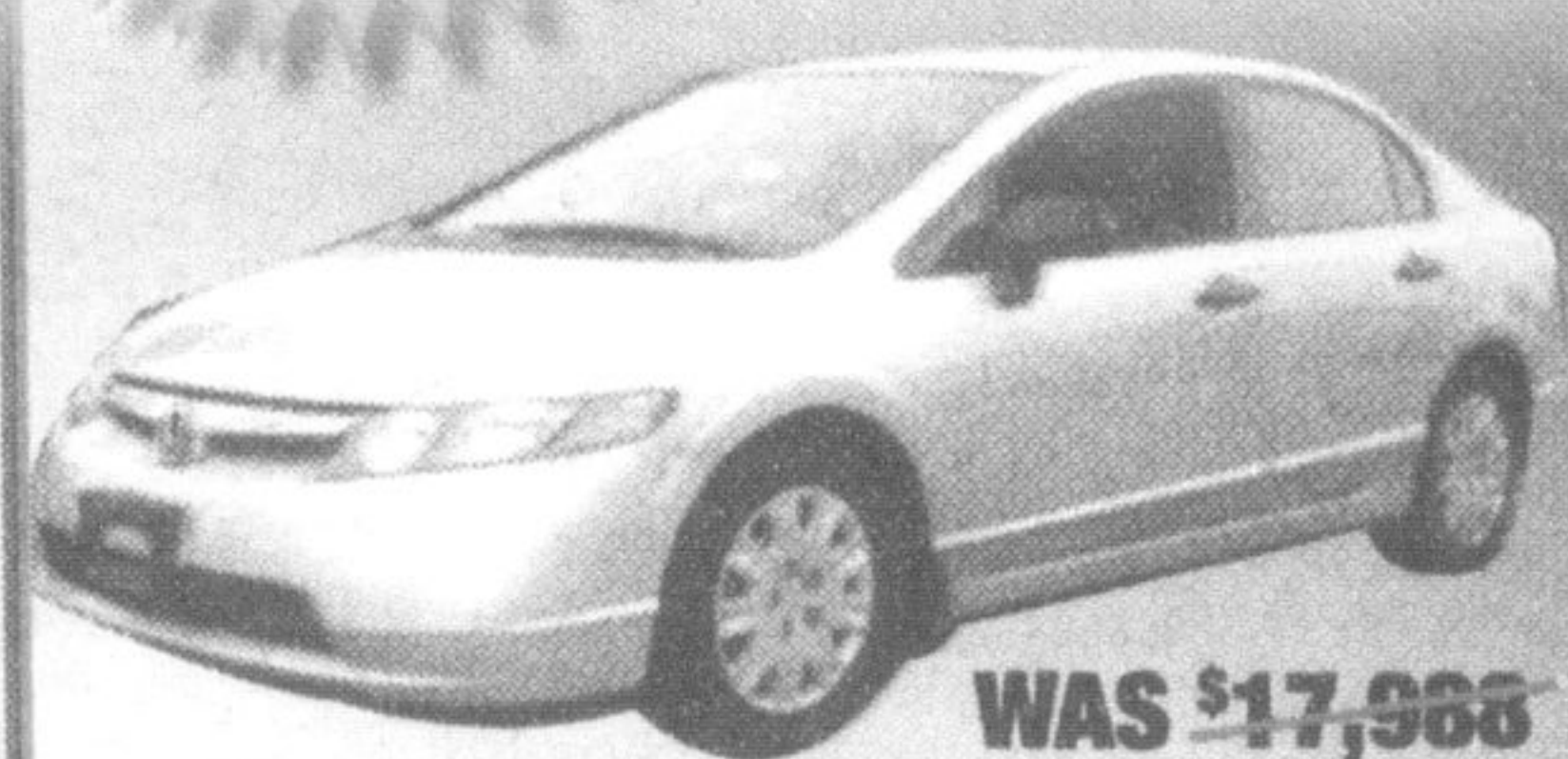


**\$14,995**  
2007 HONDA CIVIC LX 4-DR SEDAN



**WAS \$17,988**  
This was a rental unit. It is automatic with air conditioning. And it does have power windows & locks. Balance of Honda 3 Yr./60,000km total warranty plus Roadside Assistance & 5 Yr./100,000km powertrain warranty. Stk# G024618.

# GORRUD'S AUTO PLUS GROUP

Since 1960

**\$11,993**  
2006 FORD FREESTYLE 5-DR UTILITY WAGON

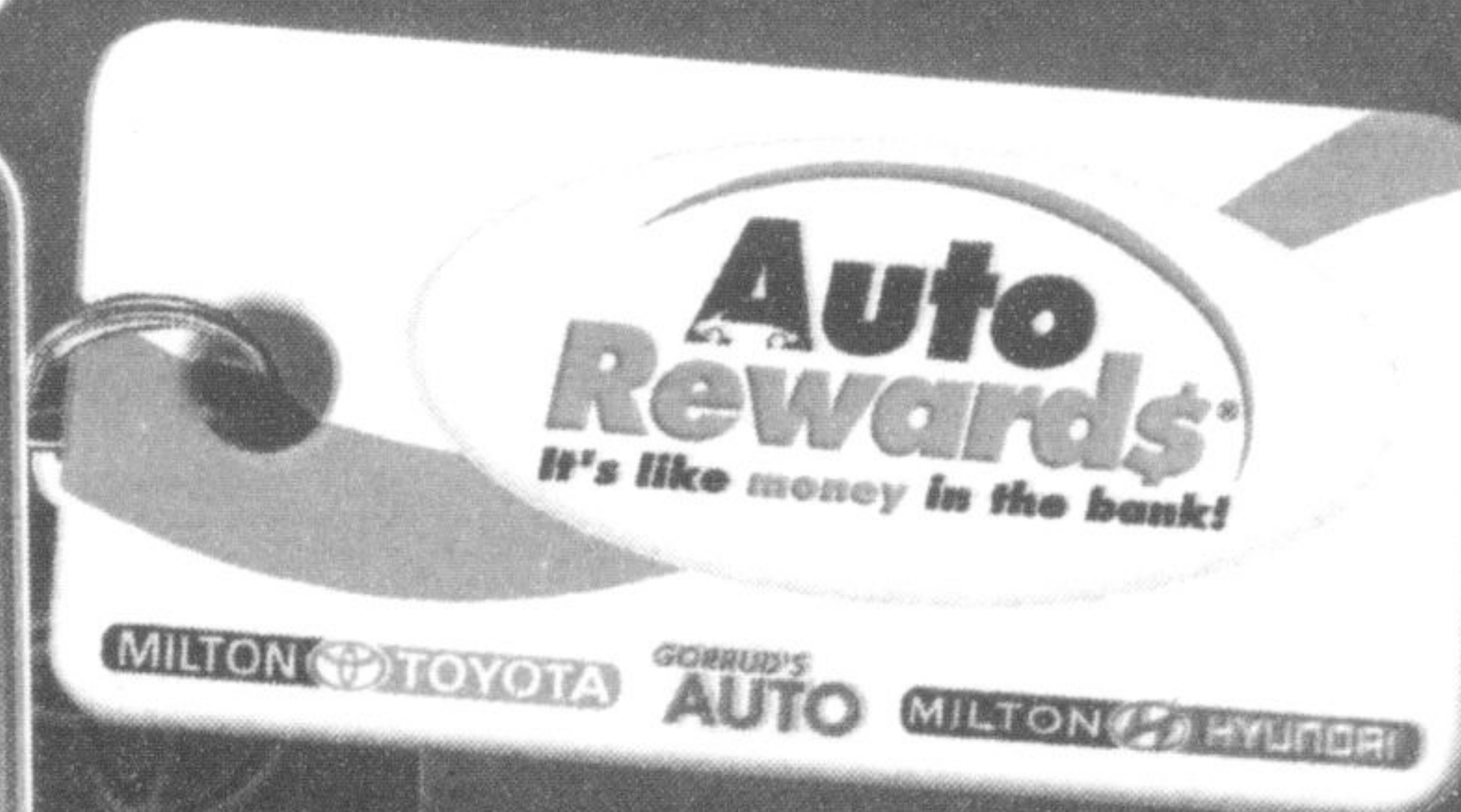


**WAS \$12,988**  
This is the "SEL" mode with power moonroof, 3rd seat & rear air conditioning. Even has rear parking aid. Balance of Ford 5 Yr./100,000km powertrain warranty & Gorrud 30 day mechanical bumper to bumper with a 30 day/2,500km exchange policy. Stk. #GA15641

**\$10,560**  
2004 PONTIAC GRAND AM 4-DR SEDAN

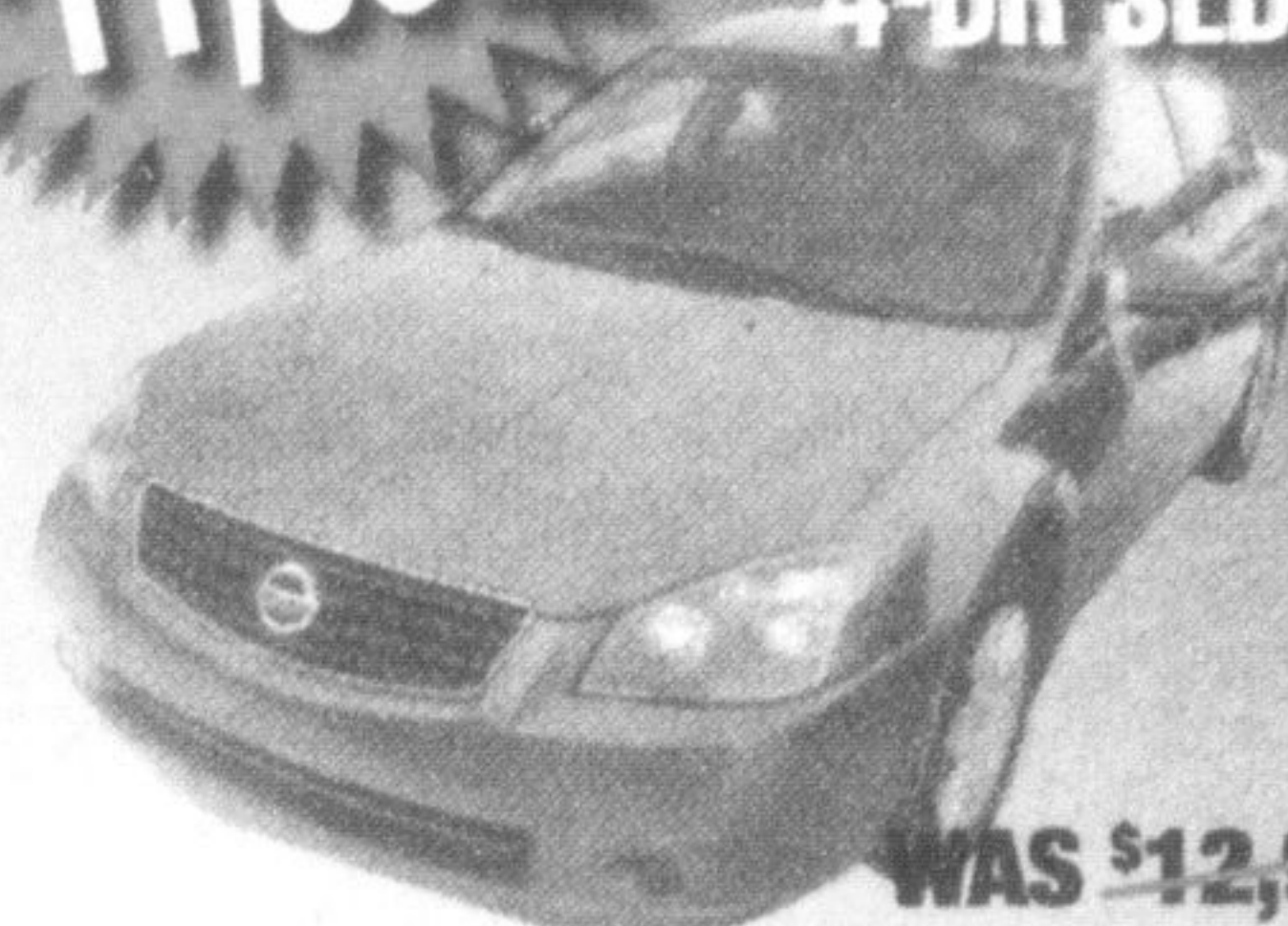


**WAS \$11,988**  
This is the "GT" model with power moonroof. It is the V6 Engine & has the chrome rims. Very low, low mileage. Warranty: 6 Month/10,000km Gorrud powertrain including 30 day mechanical bumper to bumper with a 30 day/2,500km exchange policy Stk. #G182372.



- Earn 10% At Every Visit!
- Save Up To \$2,000 OFF Your Next Vehicle!
- FREE Oil Change!
- FREE Car Washes!
- FREE Multipoint Inspections!
- FREE Gift Certificates!
- Valuable Merchant Discounts!
- 30-Day Exchange Policy!
- Every Vehicle is CAR PROOF VERIFIED!

**\$11,988**  
2005 NISSAN ALTIMA 3.5 S 4-DR SEDAN



**WAS \$12,988**  
Great mileage for the year! Loaded with most essential options. 4 brand new tires just installed. Balance of Nissan 5 Yr./100,000km powertrain warranty & Gorrud 30 day mechanical bumper to bumper with a 30 day/2,500km exchange policy. Stk. #G286107.

**\$6,980**  
2004 PONTIAC MONTANA 4-DR VAN



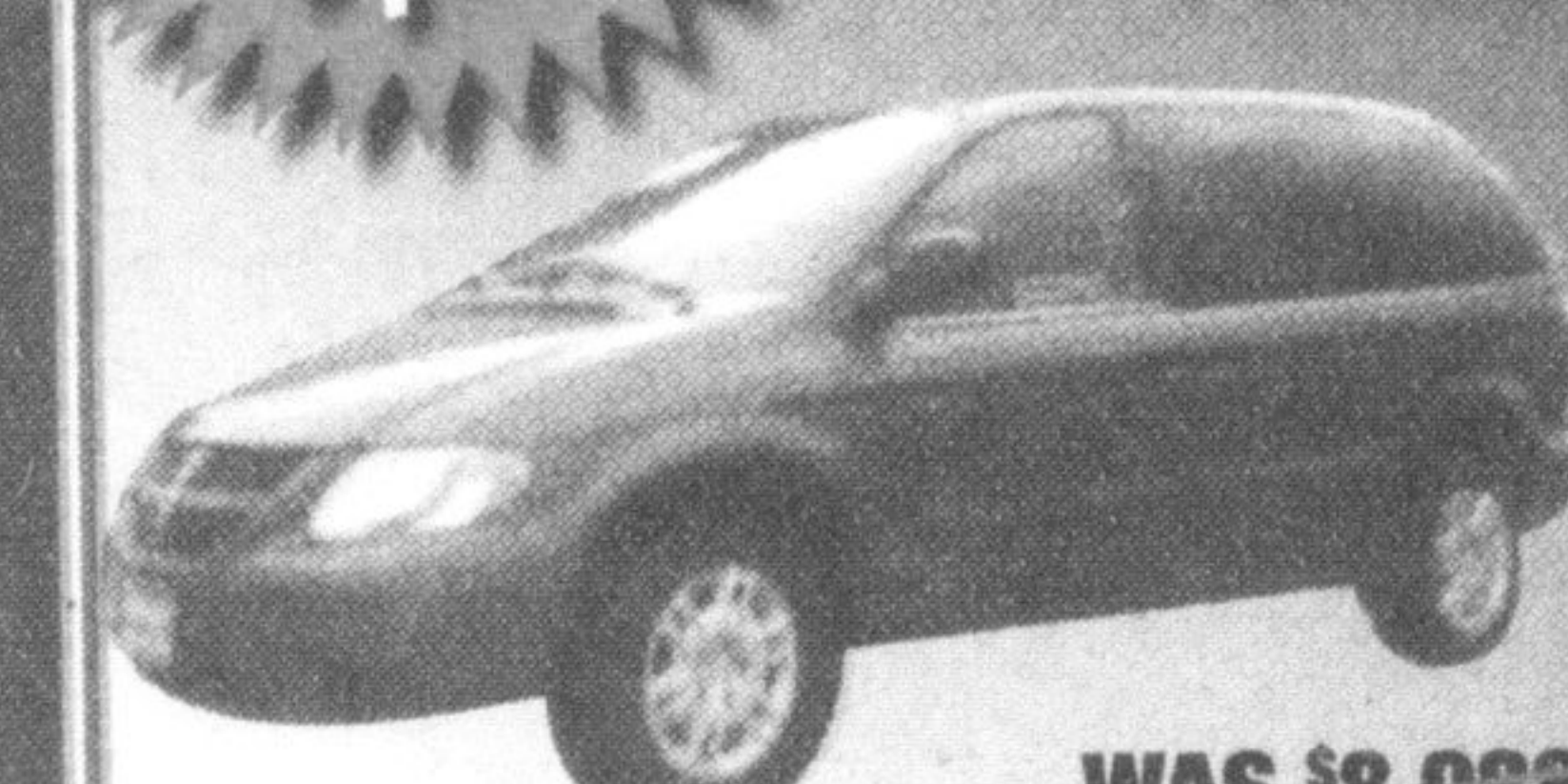
**WAS \$8,988**  
Great mileage for the year. Very well equipped including quad seating. Balance of GM 5 Yr./100,000km powertrain warranty plus Gorrud 30 day mechanical bumper to bumper with a 30 day/2,500km exchange policy. Stk. #G236777

**\$6,980**  
2004 SATURN ION-3 4-DR SEDAN



**WAS \$9,988**  
Economical 5 speed transmission. It is a Level 3 with aluminum rims, power windows & locks. Very low, low mileage for the year. Balance of Saturn 5 Yr./100,000km powertrain warranty & Gorrud 30 day mechanical bumper to bumper with a 30 day/2,500km exchange policy. Stk. #G152644.

**\$7,952**  
2005 DODGE CARAVAN 4-DR VAN



**WAS \$8,988**  
This van is very well equipped with quad seats. Even has the DVD entertainment. Warranty: 6 Month/10,000km Gorrud powertrain including 30 day mechanical bumper to bumper with a 30 day/2,500km exchange policy Stk. #G218894

## THE BENEFITS OF GORRUD'S CERTIFIED USED VEHICLES

- 110 + Point Mechanical/Appearance Reconditioning Process
- 6 Months, 10,000km Powertrain Coverage
- 30 Day Complete Mechanical Warranty
- 30 Day Exchange Program

**\$11,388**  
2007 HYUNDAI ACCENT GL 4-DR SEDAN



**WAS \$11,988**  
This was a rental unit. It is the GL model with power windows & locks. Great mileage & very clean car! Balance of Hyundai 5 Yr./100,000km comprehensive & powertrain warranty. Stk. #G149606.

**\$27,792**  
2005 LEXUS RX 330 5-DR UTILITY WAGON



**WAS \$28,988**  
Very well equipped vehicle inside & out!! It has the leather, power moonroof, rear power hatch & all wheel drive. Balance of Lexus 6 Yr./110,000km powertrain warranty & Gorrud 30 day mechanical bumper to bumper with a 30 day/2,500km exchange policy. Stk. #G046799

**\$12,990**  
2007 CHEVROLET IMPALA LS 4-DR SEDAN



**WAS \$14,988**  
Very well equipped including power driver seat. Outstanding value for the year, mileage & options. 4 brand new tires just installed. Balance of GM 5 Yr./160,000km powertrain warranty & Gorrud 30 day mechanical bumper to bumper with a 30 day/2,500km exchange policy. Stk. #G339086.

# Agency makes funding plea

By Stephanie Hounsell  
CANADIAN CHAMPION STAFF

A long-standing agency for at-risk youth made a desperate plea for support at the Region's health and social services committee to avoid shutting its doors.

"We hope you can give us your support and save our agency from closure," said Pat Honsberger of Transitions for Youth (TFY), which announced in November it would have to close next month due to inadequate funding.

"We feel that now more than ever our services are needed due to the economic crisis."

Honsberger said TFY is seeking the committee's support — and then that of regional council — to pass a motion calling on the Province to provide needed financial assistance. The organization has been servicing Halton since 1981, focusing on at-risk kids, youth and their families.

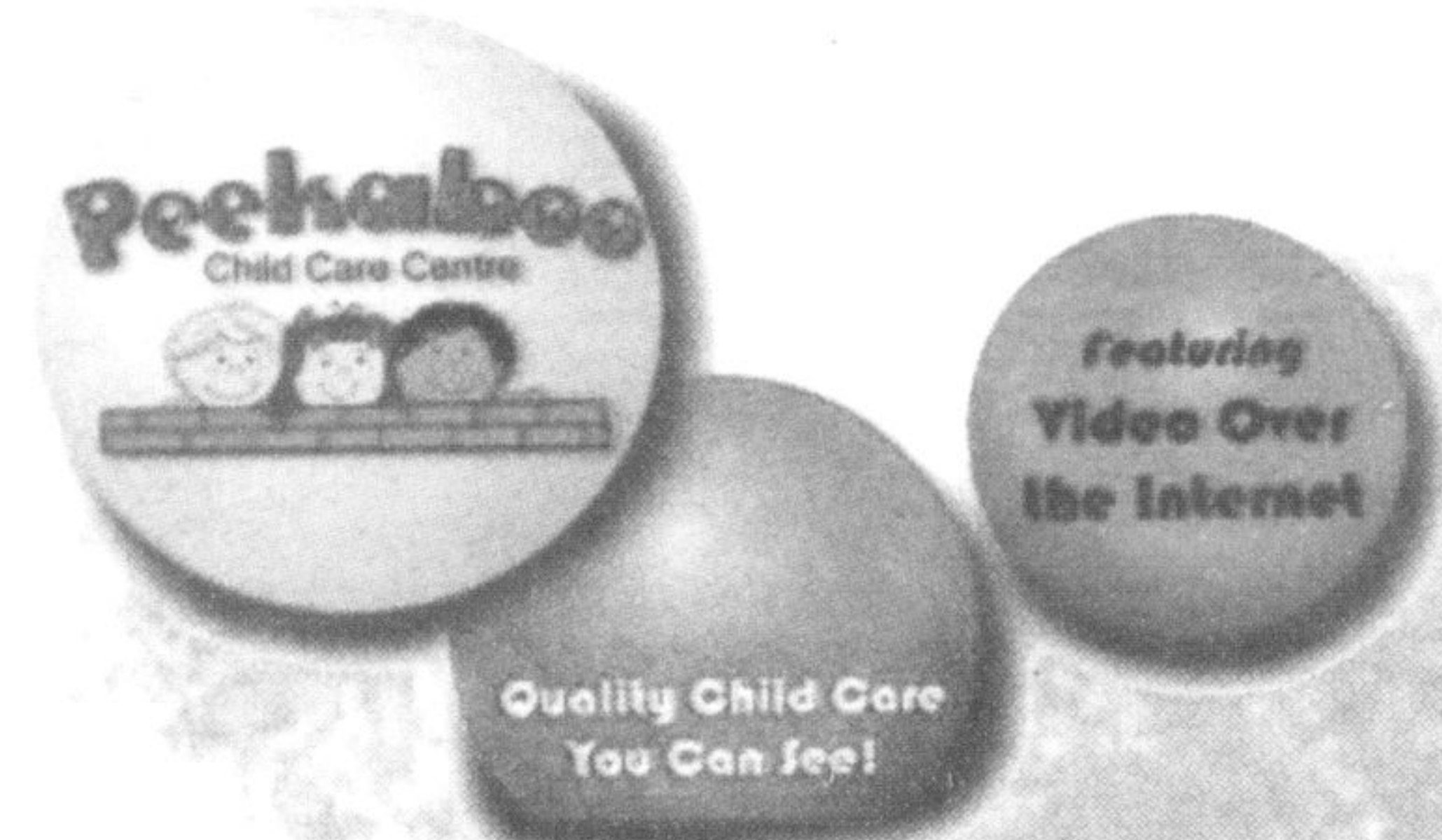
In 2007 and 2008, more than 4,800 clients were helped, Honsberger said. About 13 per cent of the organization's clients come from Milton.

Honsberger said if TFY closes "all these families in our community will have nowhere to turn and so many will fall through the cracks and the problems will get much worse."

TFY's programs support vulnerable kids in overcoming emotional and behavioural challenges, Honsberger said.

With a staff report on TFY currently underway, committee members opted at the January 13 meeting to wait for the report — due to be discussed at the February 3 health and social services committee meeting — before making any decisions.

Stephanie Hounsell can be reached at [sthiessen@miltoncanadianchampion.com](mailto:sthiessen@miltoncanadianchampion.com).



## Full-Time and Part-Time SPACES NOW AVAILABLE

- Fully Licensed Child Care
- Ages 6 Weeks to 6 Years
- Care Available 2-5 Days per Week
- Caring ECE Staff
- Arts, Crafts, Computers
- Field Trips, Special Events
- Low Ratio Kindergarden Programs
- Jolly Phonics, Science & Math
- Nutritious Meals and Snacks
- All Natural Cleaning Products

8611 Escarpment Way, Milton  
905-875-2255

1120 Maple Ave, Milton  
905-693-4873

Drop in for a tour.

No appointment necessary.

For more information on any of our 17 Great Locations

Visit: [www.peekabookid.com](http://www.peekabookid.com)

Call: 1-866-607-PEEK (7335)

"Happy Holidays to Everyone!"

# GORRUDS.com