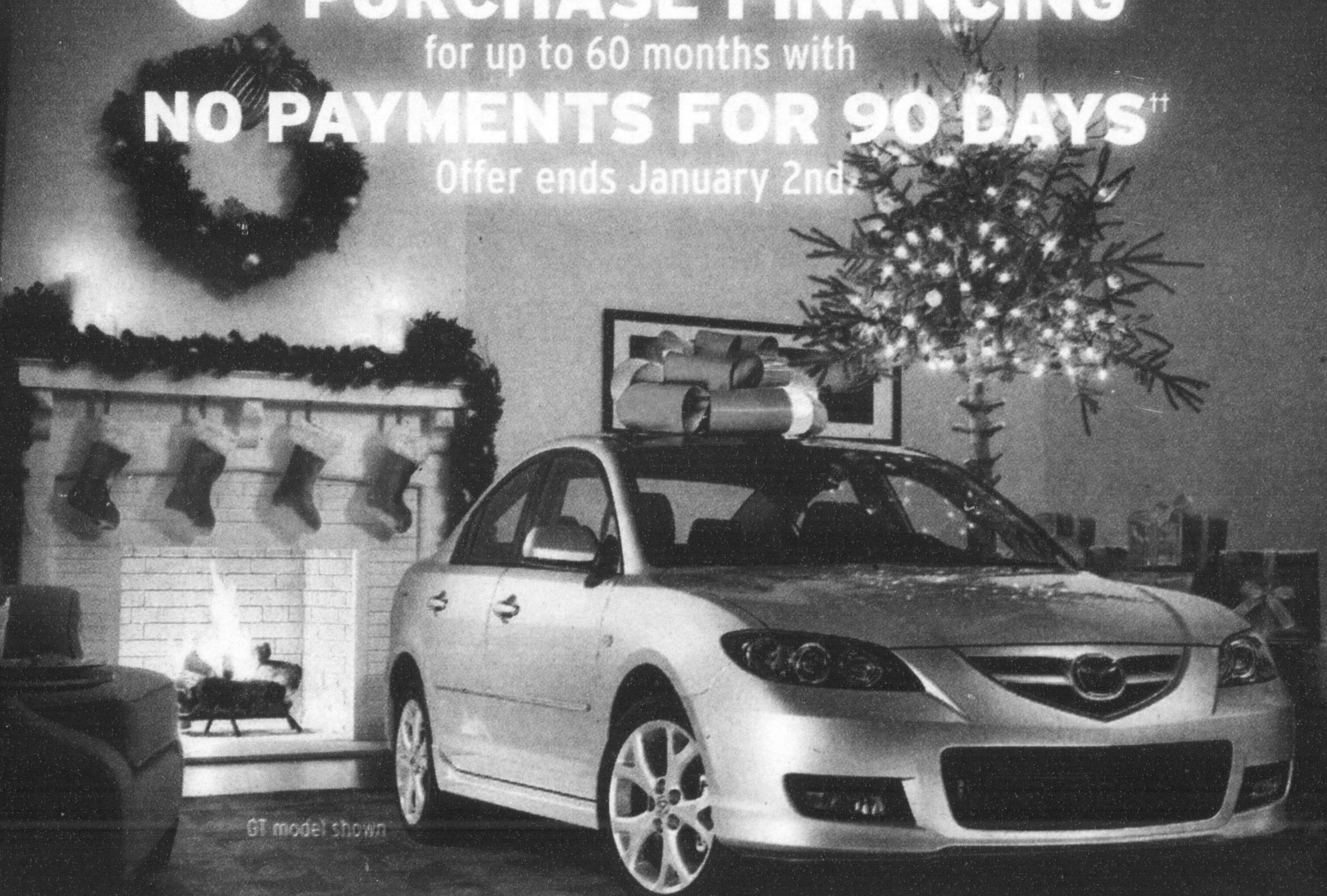


STOP WISHING START DRIVING

0% **PURCHASE FINANCING†**
for up to 60 months with
NO PAYMENTS FOR 90 DAYS**
Offer ends January 2nd



GT model shown



'09 MAZDA 3

MSRP	\$16,895**
Price Reduction	\$2,000
Purchase Price	\$14,895*

Additional
HOLIDAY OFFERS
UP TO **\$1,000**
on selected models†††

★★★★★
HIGHEST GOVERNMENT CRASH TEST RATING*



GT-V6 model shown

'09 MAZDA TRIBUTE

MSRP	\$23,450**
Price Reduction	\$900
Purchase Price	\$22,550*

★★★★★
HIGHEST GOVERNMENT FRONTAL CRASH SAFETY RATING*



GT model shown

'09 MAZDA 5

MSRP	\$20,795**
Price Reduction	\$800
Purchase Price	\$19,995*



★★★★★
5-STAR SAFETY
TOP GOV'T RATING, ALL 5 TESTS*



GT-V6 model shown

THE ALL-NEW '09 MAZDA 6

MSRP	\$24,495**
Price Reduction	\$2,000
Purchase Price	\$22,495*



See dealer for great lease offers.

EXPERIENCE *EMOTION IN MOTION* AT YOUR LOCAL MAZDA DEALER. ZOOM-ZOOM. FOREVER.
TO LOCATE A DEALER NEAR YOU, VISIT WWW.MAZDA.CA OR CALL 1-800-263-4680.



READY TO ROLL OUR PRE-DELIVERY COMMITMENT MEANS EVERY NEW MAZDA IS CHECKED OUT, GASSED UP AND FITTED WITH FLOOR MATS. • ASK ABOUT OUR OUTSTANDING COMPREHENSIVE AND POWERTRAIN WARRANTY COVERAGE. ASK ABOUT OUR SPECIAL OFFERS FOR EXISTING MAZDA CUSTOMERS. GRADUATES GET AN ADDITIONAL CASH AWARD OF UP TO \$750 TOWARDS A PURCHASE OR LEASE.

10% APR. Purchase Financing for 36/36/36/60 months is available on all new 2009 Mazda3/2009 Mazda5/2009 Mazda6/2009 Mazda6 GT/2009 Mazda6 GT-V6/2009 Mazda6 GT-V6 AWD (W/TZ79JA00)/2009 Mazda6 GT (E6D59JA00)/2009 Mazda6 GT-V6 (G4T89JA00) is \$20,945/\$21,150/\$23,295/\$23,905. Excludes \$1,395 freight and P.D.E. for all 2009 Mazda3/Mazda Tribute models. PPSA registration fee of \$65 is extra. **MSRP for new 2008.5 Mazda3 GX (D4S58AA00)/2008 Mazda5 GS (E6D59AA00)/2008 Mazda5 GS (E6D59AA00) is \$16,895/\$23,520/\$24,495. Excludes \$1,395 freight and P.D.E. for all 2008 Mazda3/Mazda Tribute models. PPSA registration fee of \$65 is extra. ††Holiday offers available on select 2009 models only. \$1,000 credit is only available on 2009 Mazda3 GX (D4S59AA00) model. For Purchase/Finance/Lease - \$5 OMVIC transaction fee, licence, insurance, taxes and other dealer charges are extra. Dealer may sell/lease for less. Limited quantities available. Dealer order or trade may be necessary on certain vehicles. †††Based on 2008 fuel consumption ratings published by Natural Resources Canada. Offers available from December 2, 2008 until January 2, 2009. Lease and Finance on approved credit for qualified customers only. Visit mazda.ca or see your dealer for complete details. (SABs). U.S. Government star ratings are part of the National Highway Traffic Safety Administration's (NHTSA's) New Car Assessment Program (www.safercar.gov).