



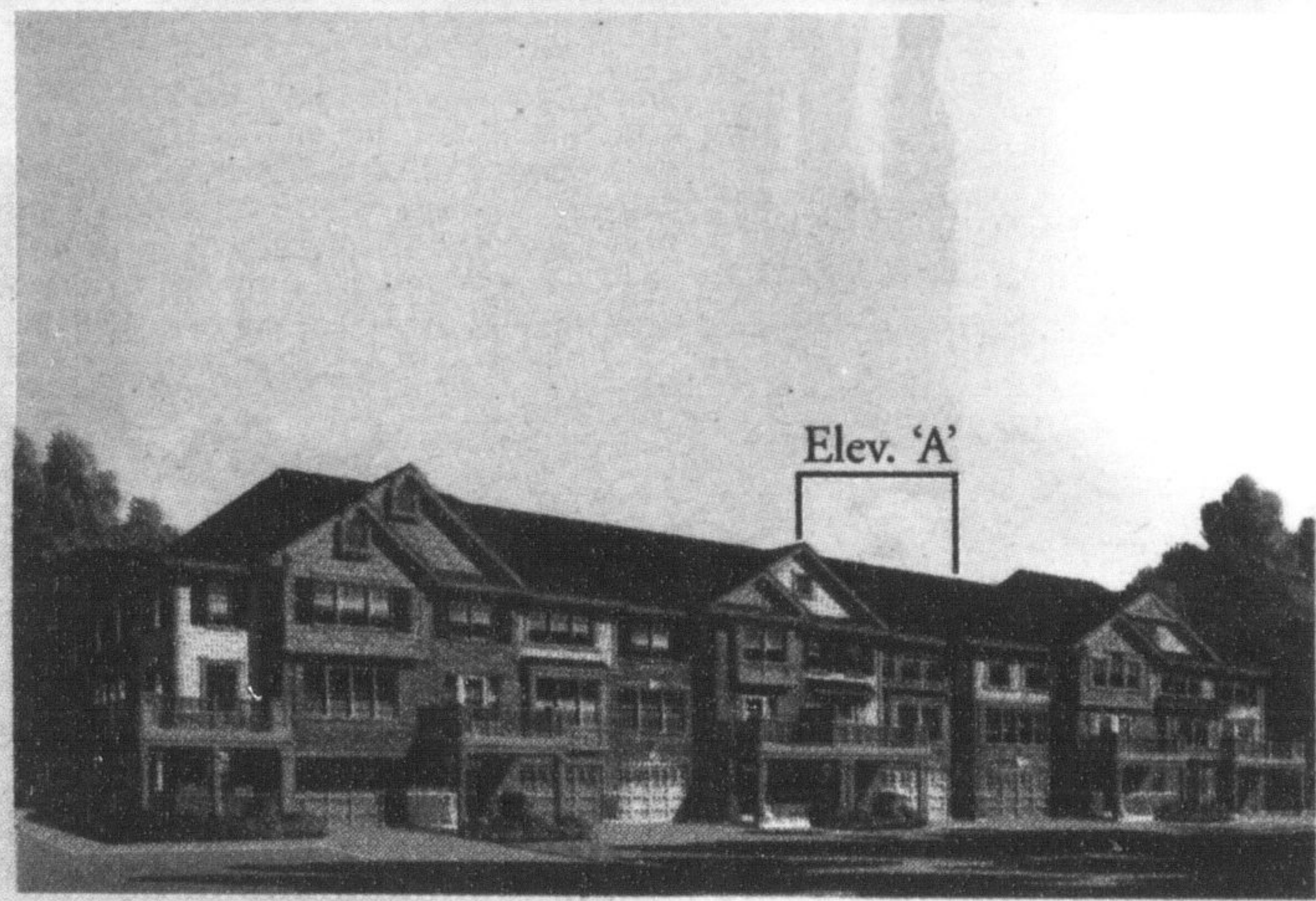
★★★★★ Highest in Customer Satisfaction With
New Home Builders in Greater Toronto Area,
Three Years In A Row ★★★★★

Affordable Homes Are Conveniently Located Everywhere!



MILTON

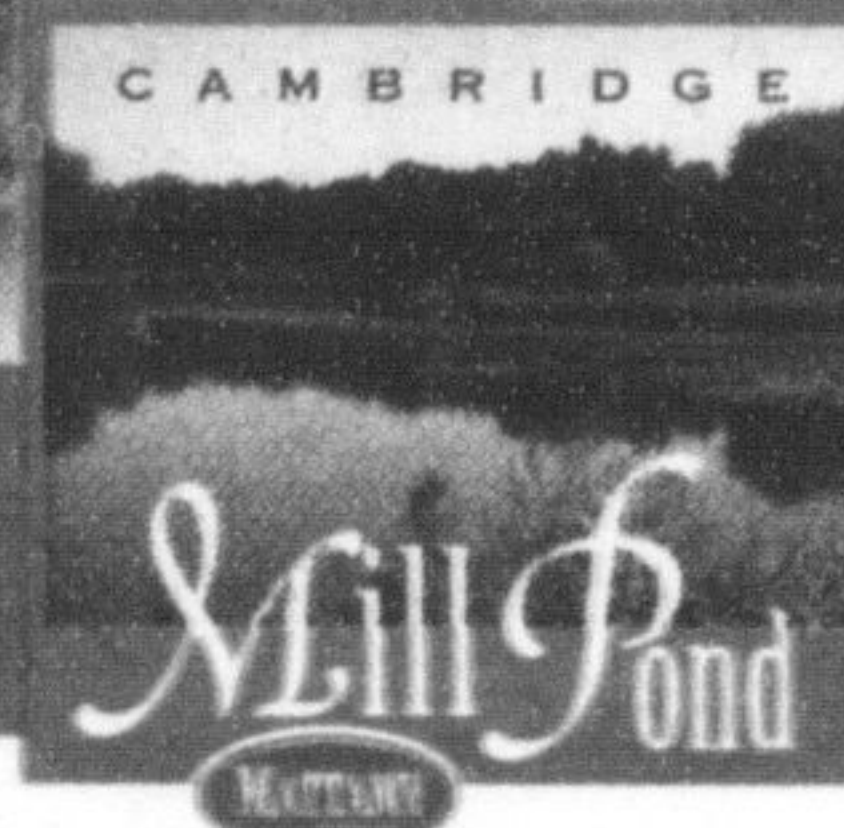
Up To \$40,000 Off!



Village Home, The Cherrywood 'A', 1,040 Sq.Ft.,
\$219,990 NOW \$209,990

Hawthorne Village

- Village Homes From \$209,990
- WideLot™ Townhomes From \$239,990
- Main Street Townhomes From \$264,990
- Detached Main Street Homes From \$309,990
- 34' WideLot™ From \$309,990
- 36' WideLot™ From \$349,990
- 43' WideLot™ From \$418,990
- 50' WideLot™ From \$429,990



CAMBRIDGE

Up To \$20,000 Off
Select Lots!



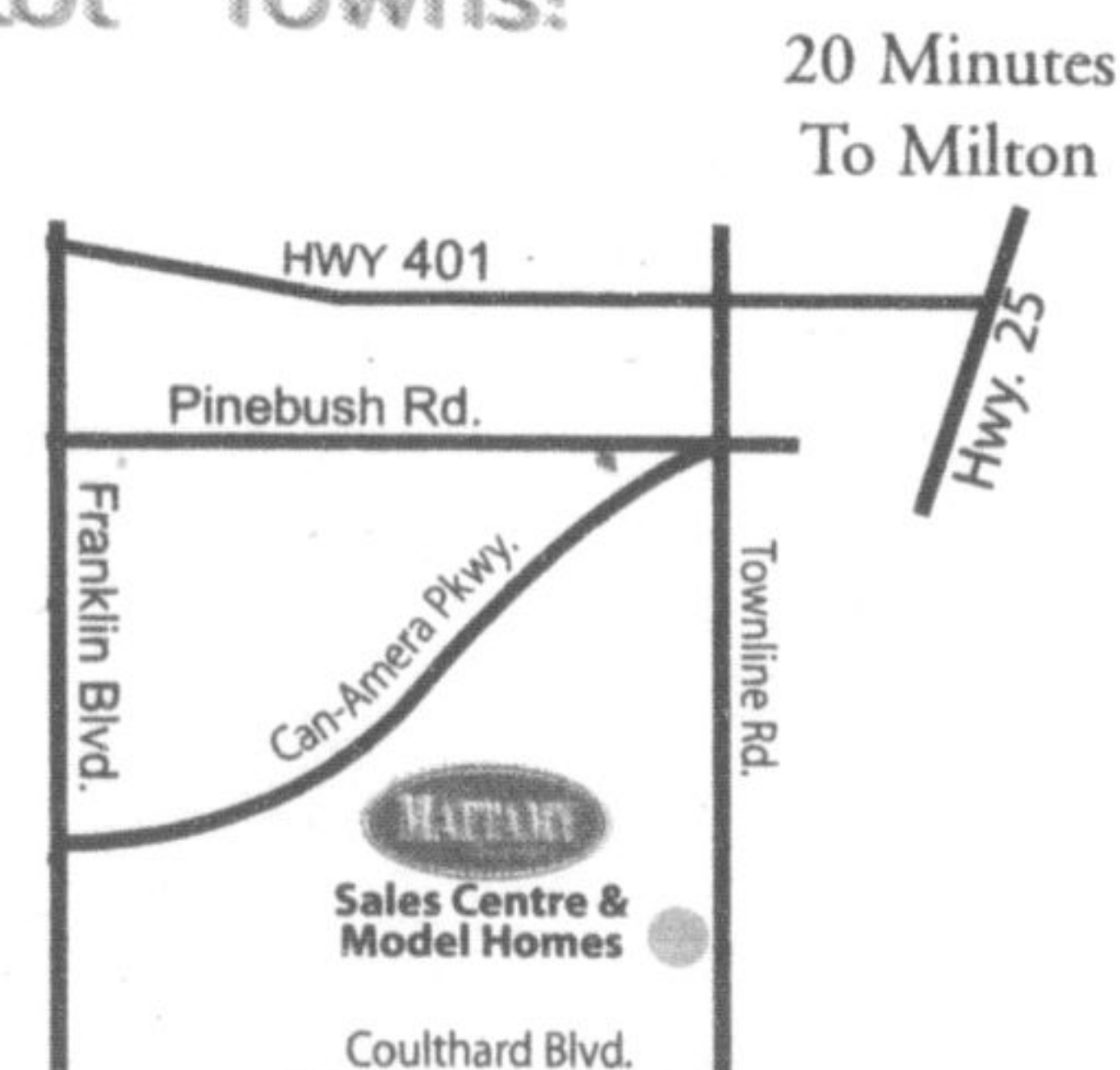
Freehold WideLot™ Townhome, The Cyrus 'B', 1,111 Sq.Ft.,
\$189,990

Today New Release Of Freehold WideLot™ Towns!

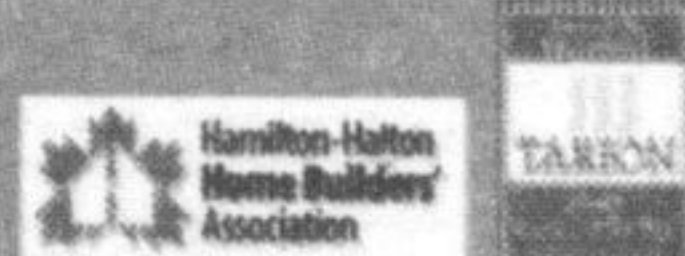
- 8 Model Homes Open To Tour.
- 3 New Home Designs

Mill Pond

- Freehold WideLot™ Townhomes From \$189,990
- 34' WideLot™ Homes From \$214,990
- 43' WideLot™ Homes From \$254,990
- 50' WideLot™ Homes From \$314,990



www.mattamyhomes.com



Presentation Centre Hours:
Monday to Thursday 1pm-8pm; Friday 1pm-6pm;
Saturday, Sunday and Holidays 11am-6pm



Mattamy Homes received the highest numerical score in the Greater Toronto Area (GTA) in the proprietary J.D. Power and Associates 2006-2008 Canadian New Home Builder Customer Satisfaction Study. 2008 study based on 4,515 repetitive first homebuyers in the GTA, measuring 20 home builders and their level of customer care in their new home January-December 2007. Proprietary study results are based on experiences and perceptions of consumers surveyed in May - May 2008. Visit jdpower.com.

All illustrations are artist's concept. All dimensions are approximate. Prices, specifications, terms and conditions subject to change without notice. E.&O.E.

When Our Homeowners Feel Satisfied, We Feel Satisfied.