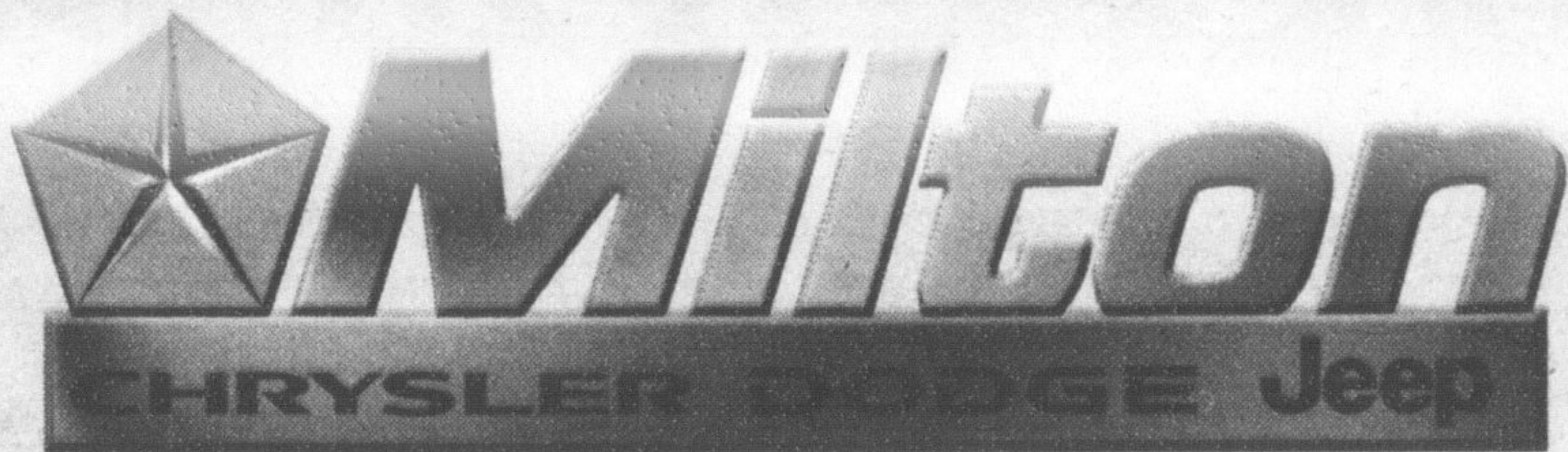
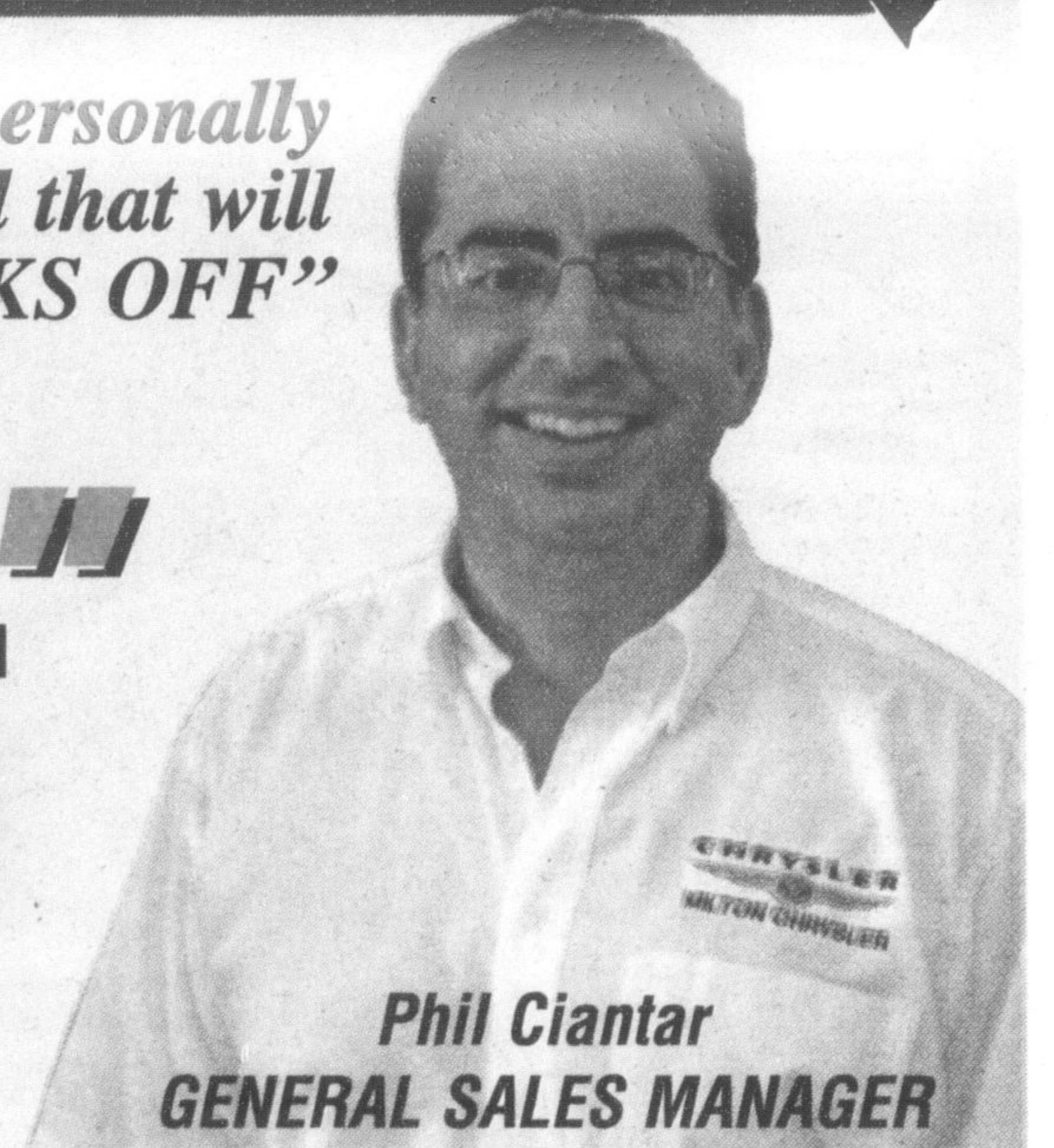


OVER 200 VEHICLES AT [www.miltonchrysler.com](http://www.miltonchrysler.com)



"I will personally make you a deal that will KNOCK YOUR SOCKS OFF"



Phil Ciantar  
GENERAL SALES MANAGER

# "EXCLUSIVE DEAL" EVERYTHING

WILL SELL AT OR BELOW EMPLOYEE PRICES.  
(Every brand new 2008 & 2009 will be price slashed in order to sustain our sales increase & meet our 2008 sales target)

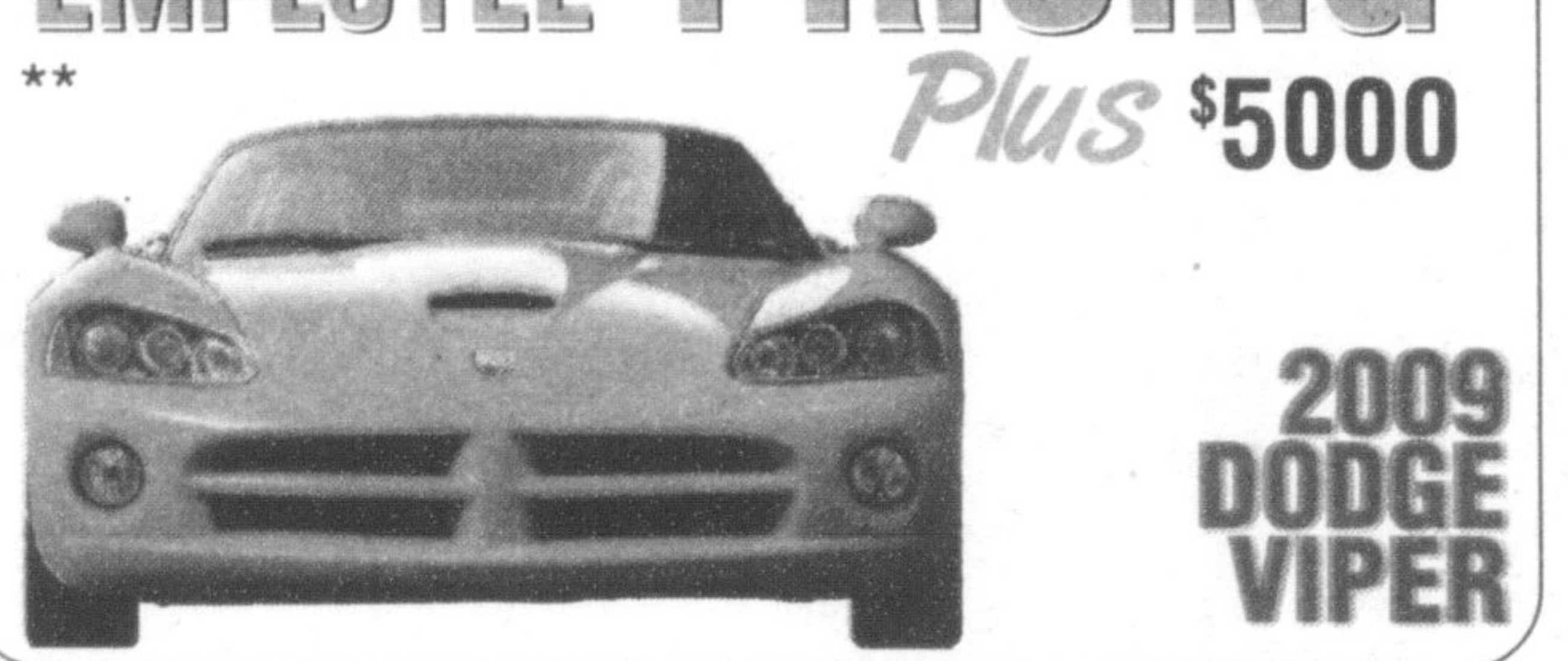
## EMPLOYEE PRICING



## EMPLOYEE PRICING



## EMPLOYEE PRICING



## 2009 DODGE CALIBER SXT



## 2008/9 DODGE GRAND CARAVANS & CHRYSLER TOWN & COUNTRY



## 2008.5 JEEP GRAND CHEROKEE LTD. TURBO DIESEL



## 2008 DODGE DAKOTA SXT CREW CAB



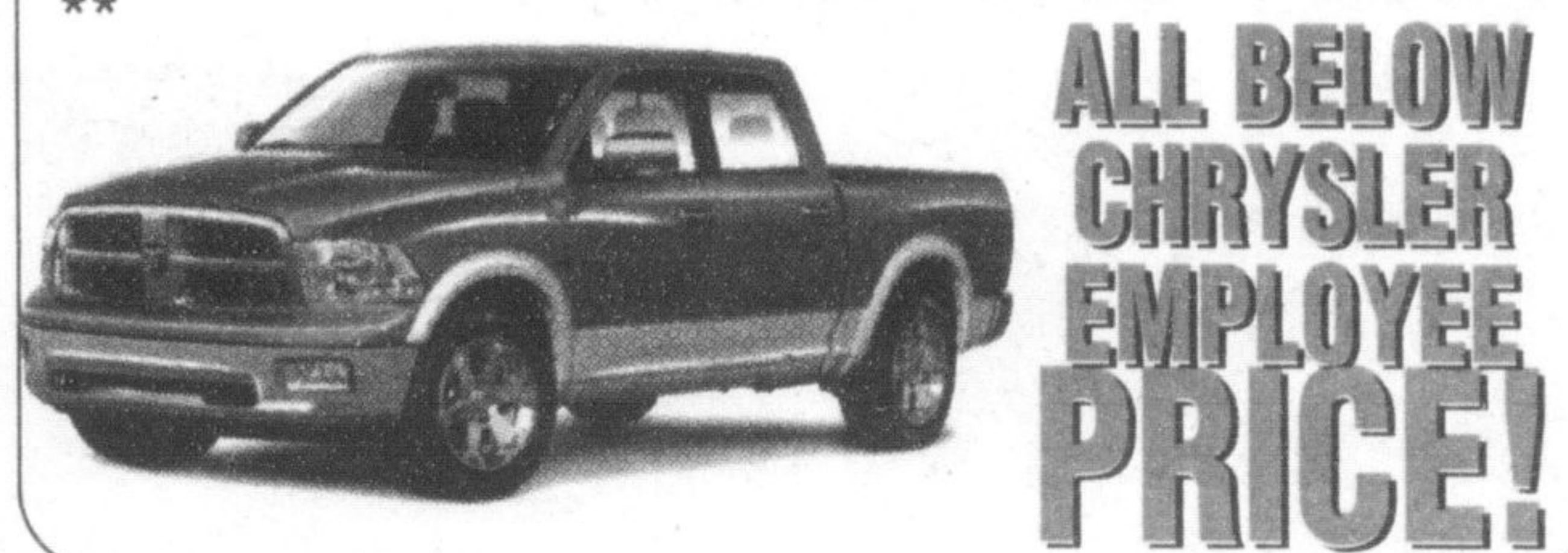
# 0% PURCHASE FINANCING

AVAILABLE UP TO 84 MONTHS.  
(ON SELECTED MODELS)

## 2009 JEEP PATRIOT & JEEP COMPASS



## All New! 2009 DODGE RAM 1500 PICKUP TRUCK



## 2009 CHRYSLER SEBRING CONVERTIBLE LIMITED



## 2008 CHRYSLER 300C SRT DESIGN



ALL WE DO IS DISCOUNT!

ALWAYS BETTER THAN "GTA" PRICES

ASK YOURSELF THIS QUESTION!  
WHY ARE MILTON CHRYSLER SALES UP WHEN THE MARKET IS DOWN? ANSWER.  
BETTER PRODUCT. BETTER SERVICE. BETTER VALUE!



#1 Chrysler Dealership in Canada for Customer Satisfaction\*

81 ONTARIO ST. N., MILTON

TOLLFREE, CANADA WIDE, SALES HOTLINE...

1-888-247-7001

2008 PRESIDENT'S AWARD WINNER  
RATED #1 FOR SALES, PARTS & SERVICE EXCELLENCE



Sean Gibson, Joe De Oliveira, Ray Dunbar, Susan Thompson, Don Levinsky, Gerry Misko, Anwar Kamal, Phil Ciantar

\*Based on December 2007 12 month SSI Results Regional Group Scores. See Dealer for Details. \*Sale prices include all rebates & discounts. Add for applicable freight, admin fee, wheel locks, taxes & license. Finance options available in lieu of consumer cash discounts on select models. OAC. Offer valid on date of publication only. \*\*Not exactly as shown. Visit Milton Chrysler for absolute best deals ever and for complete details.

