

Dateline

Dateline is a free listing available to local community groups to assist in promoting their coming events. Only charitable or non-profit community groups may use this service. We guarantee one issue of publicity of the occurrence although more insertions are possible if space permits.

Dateline notices should be e-mailed to editorial@miltoncanadian-champion.com. The final deadline is noon Monday for Wednesday's edition and 5 p.m. Tuesday for Friday's edition. Dateline items won't be accepted by telephone.

Monday Dec. 8

Milton District Hospital holds a one-on-one **breastfeeding clinic** with a certified lactation consultant from 1:30 to 3 p.m. For more information or to make an appointment, call Jill Hicks at (905) 878-2383, ext. 7610.

The Milton Salvation Army needs **volunteers** for food hamper packing set-up from 10 a.m. to 2 p.m. at its office at 100 Nipissing Rd., unit 3. It also holds its annual **charity turkey dinner fundraiser** at the Fifth Wheel restaurant on Chisholm Drive from noon to 8 p.m.

The Milton Seniors' Activity Centre, 500 Childs Dr., holds **duplicate bridge** at 9:15 a.m., its **Cyber Café** from 1 to 3 p.m., **table tennis** at 7 p.m. and **darts and billiards** from 9 a.m. to 9 p.m. The cost for each activity is \$2 for members and \$4 for non-members. **Bid euchre** is held at 1:30 p.m. The cost is \$2.50 for members and \$4.50 for non-members. For more information, call (905) 875-1681.

The Milton Action Circle of Amnesty International hosts its **Write for Rights Write-a-thon** at 7 p.m. at St. Paul's United Church, 123 Main St. E., in the fellowship room, to write letters on human rights issues in honour of the 60th anniversary of the signing of the Universal Declaration of Human Rights. For more information, e-mail amnestymilton@gmail.com.

Monday Dec. 8 - Jan. 9

The Canadian Hearing Society holds **registration** for its American Sign Language classes being held in Milton. All classes are taught by trained deaf instructors. For more information, call (905) 608-0271 or (905) 608-1691 TTY, or visit www.chs.ca.

Tuesday Dec. 9

Equilibrium — a mental health support group for those affected by depression or bipolar disorder as well as family and friends — presents **Cracking Up**, a video that documents the journey of people who've set out to turn their experience with mental illness into stand-up comedy. A sharing meeting follows. It starts at 7 p.m. at Evangel Pentecostal Church, 1450 Rebecca St., in Oakville. Admission is free. For more information, call the Canadian Mental Health Association at (905) 693-4270.

The Milton Toastmasters Club meets at 7:30 p.m. at the Milton
• see more **DATeline** on page B13

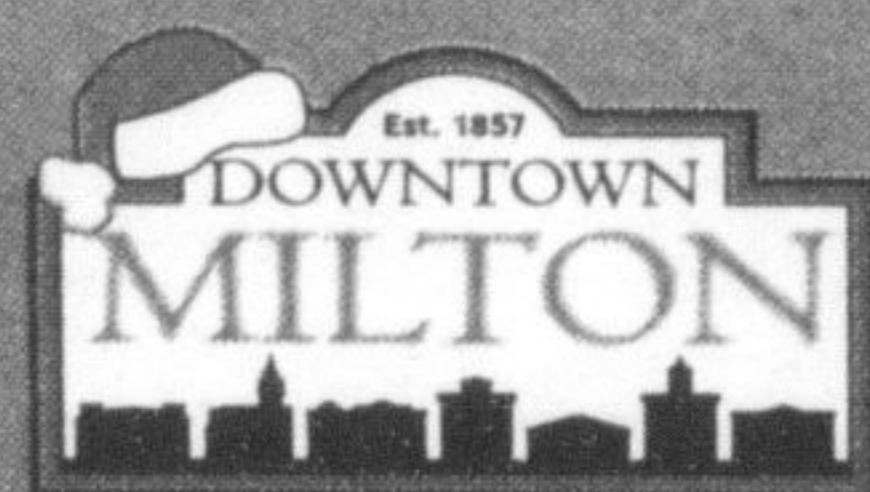
MEET SANTA
Saturday December 6th and 13th
Ivy Arms - 201 Main Street
11:00am - 1:00pm



Visit Santa and take part in the downtown Milton **SCAVENGER HUNT**
Hot Chocolate Gifts, Prizes and Fun!

Downtown Milton Open House
Thursday December 11th
Extended Evening Retail Hours
In Store Specials
Hors d'oeuvres and Refreshments

Store ads in December 10th issue of *The Shopping News*



For more information
905-876-2773
www.downtownmilton.com

Lifetime Quality • Modern Designs

Unbeatable Prices!

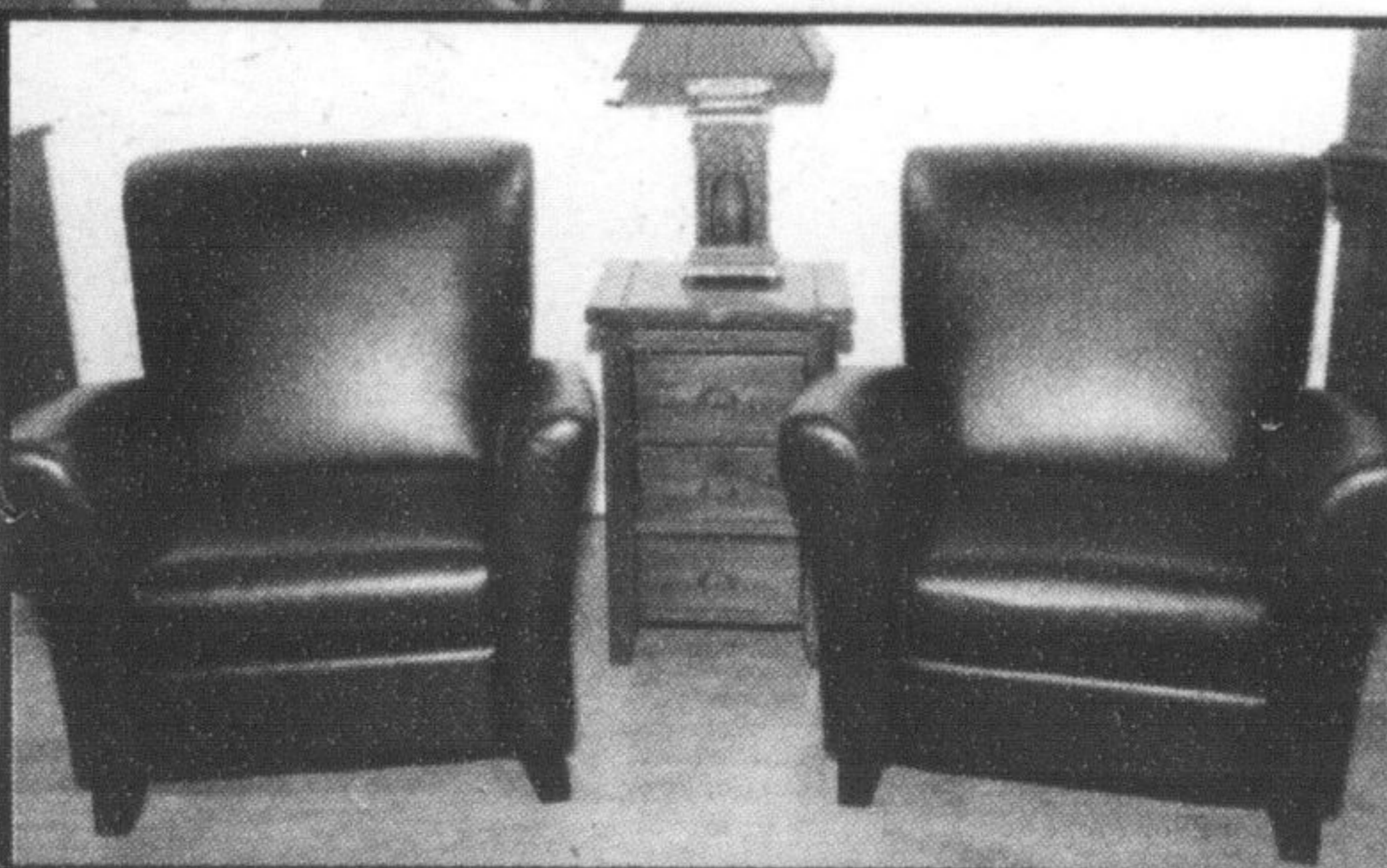
100% SOLID CHERRY BEDROOM INCL. QUEEN BED, DRESSER, MIRROR, CHEST & NIGHT STAND
~~\$6999~~

Special Factory Buy Out
\$3799
Limited quantity



QUALITY TOP GRAIN LEATHER RECLINERS
~~\$2199~~ for pair

In Stock Special
\$1099
Now for pair



100% SOLID WOOD CANADIAN MADE DINING TABLE (CUSTOM FINISH) & 6 WINDOW BACK CHAIRS

~~\$3499~~
Special Offer
\$1899
Limited quantity



THE BEST PRICES ON QUALITY FURNITURE SINCE 1977

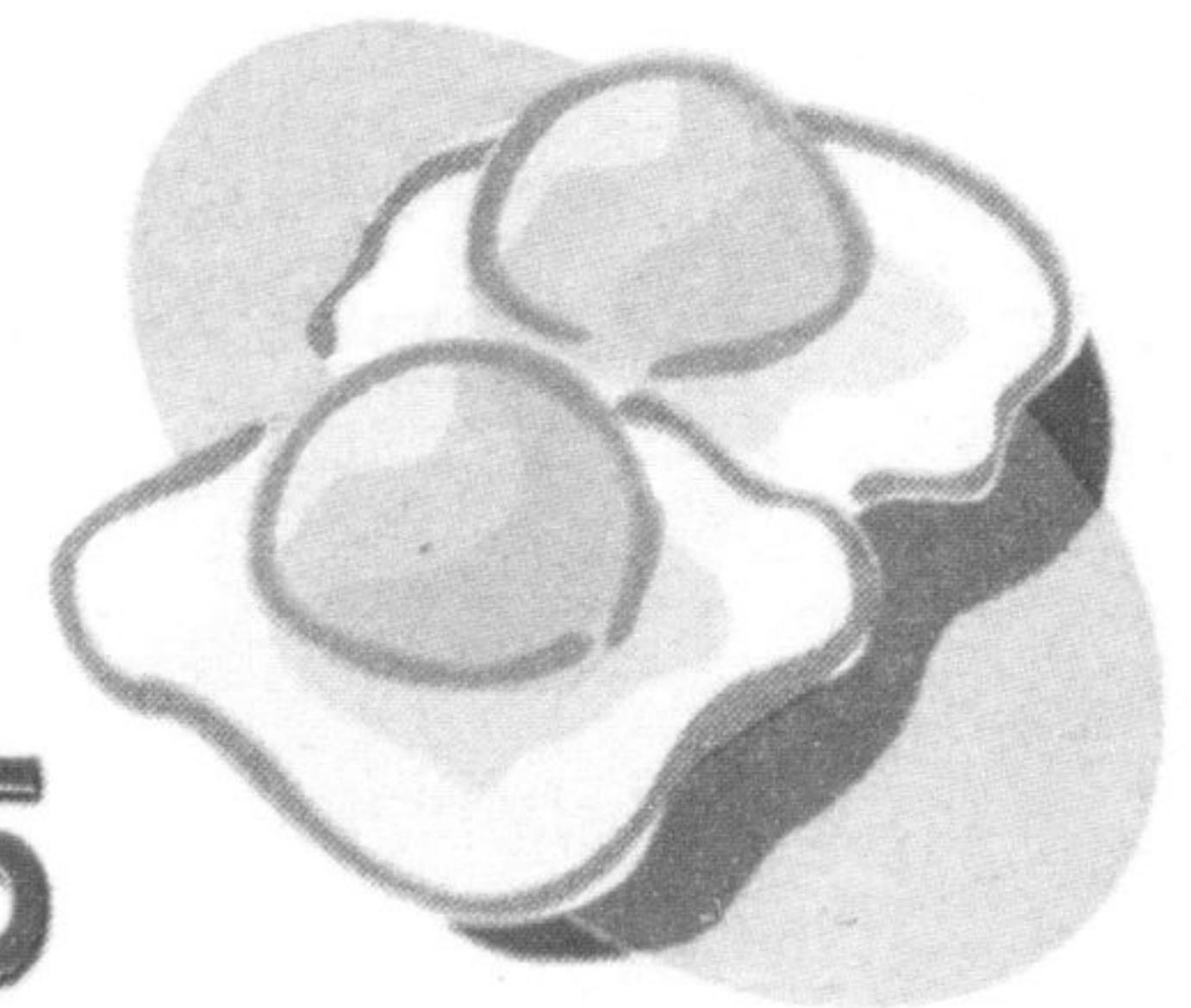
Heritage Furniture

4205 Fairview Street, Burlington • 905.634.5298



NOW SERVING BREAKFAST

Breakfast Specials From \$3.95



BREAKFAST SERVED SATURDAYS & SUNDAYS FROM 7AM

**1149 Maple Ave., Milton, ON
905-864-3322**

Trailhead Grade 10 BCP Grade 11-12



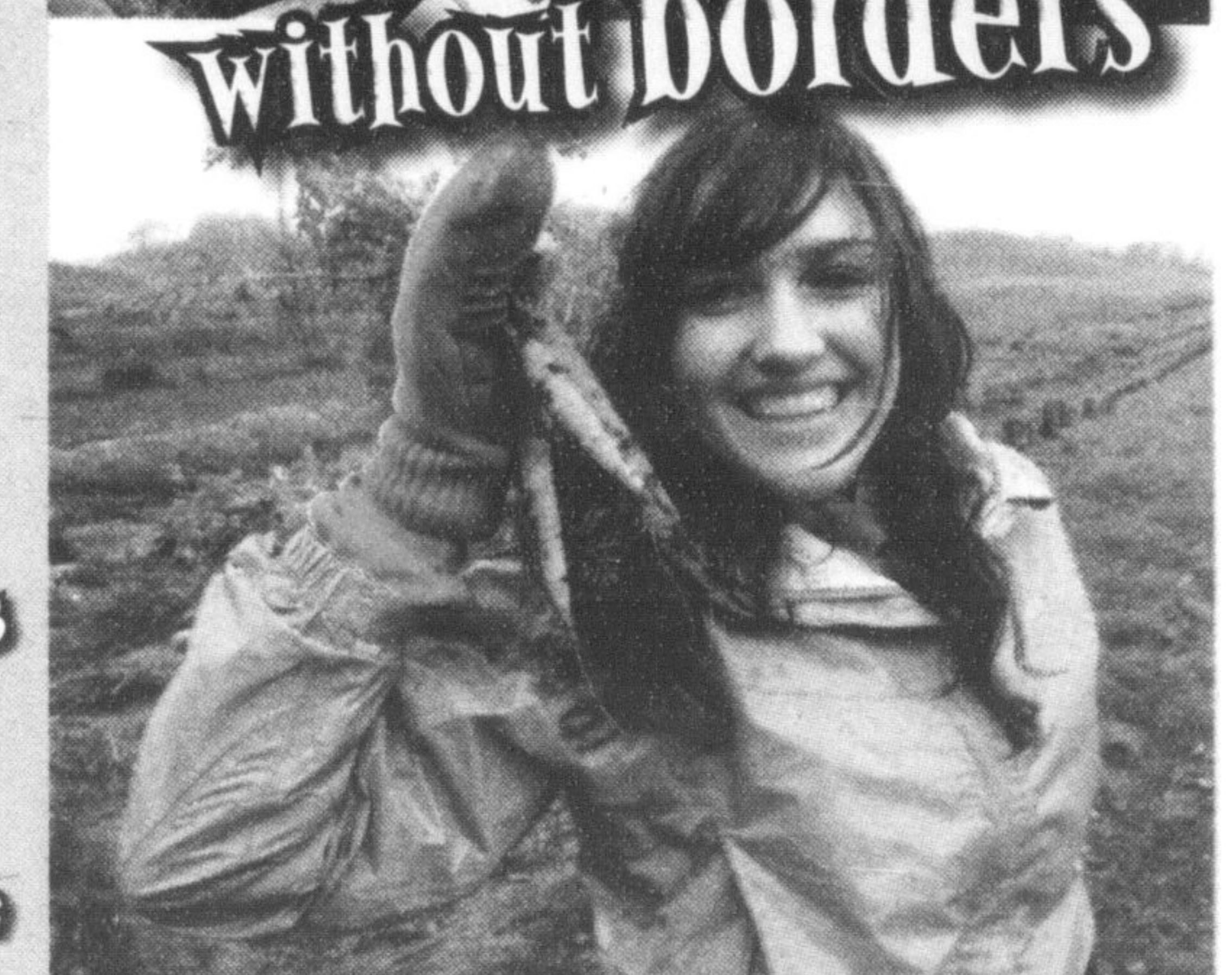
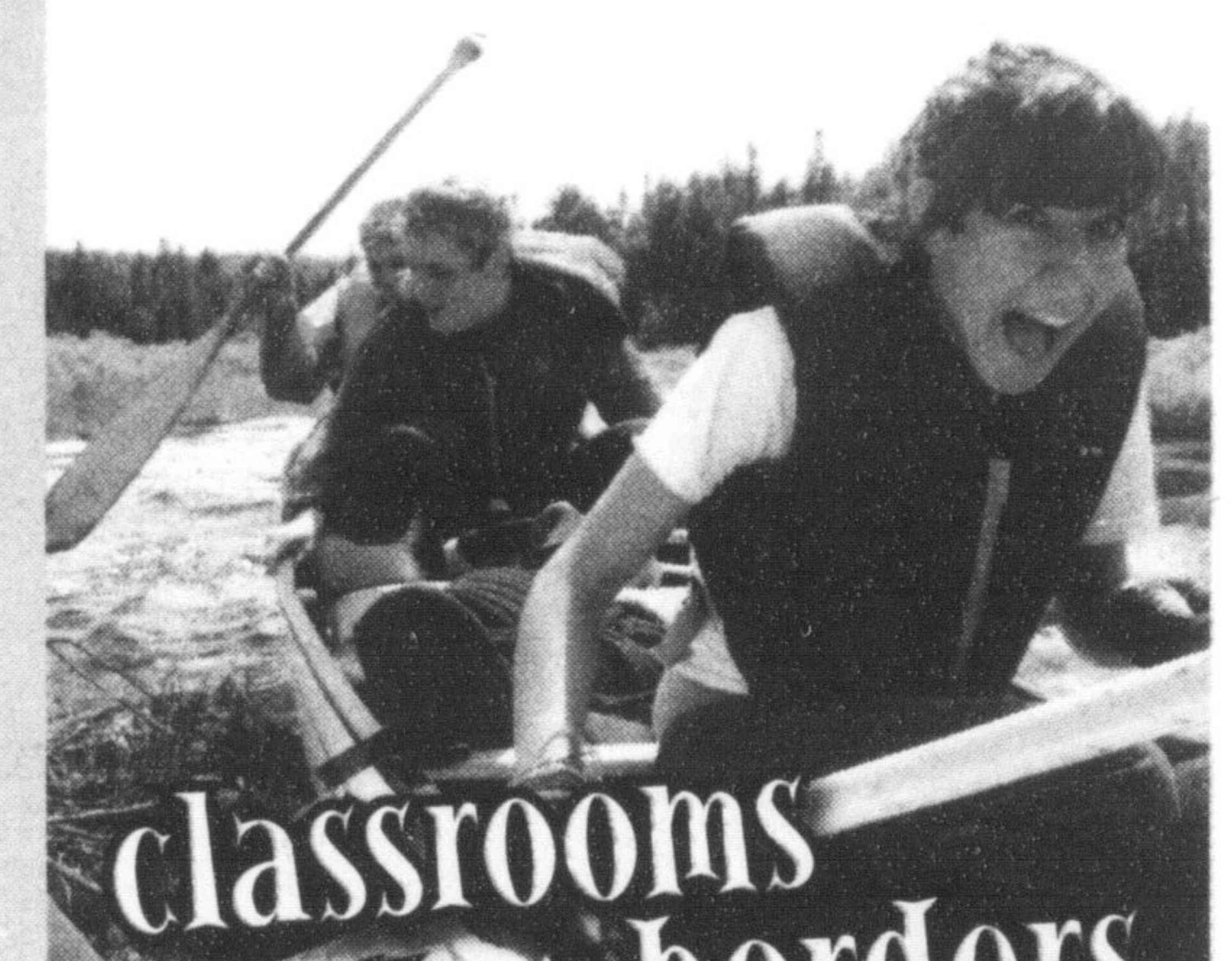
Bronte Creek Project

5 months

4 credits

20 new friends

1 awesome experience



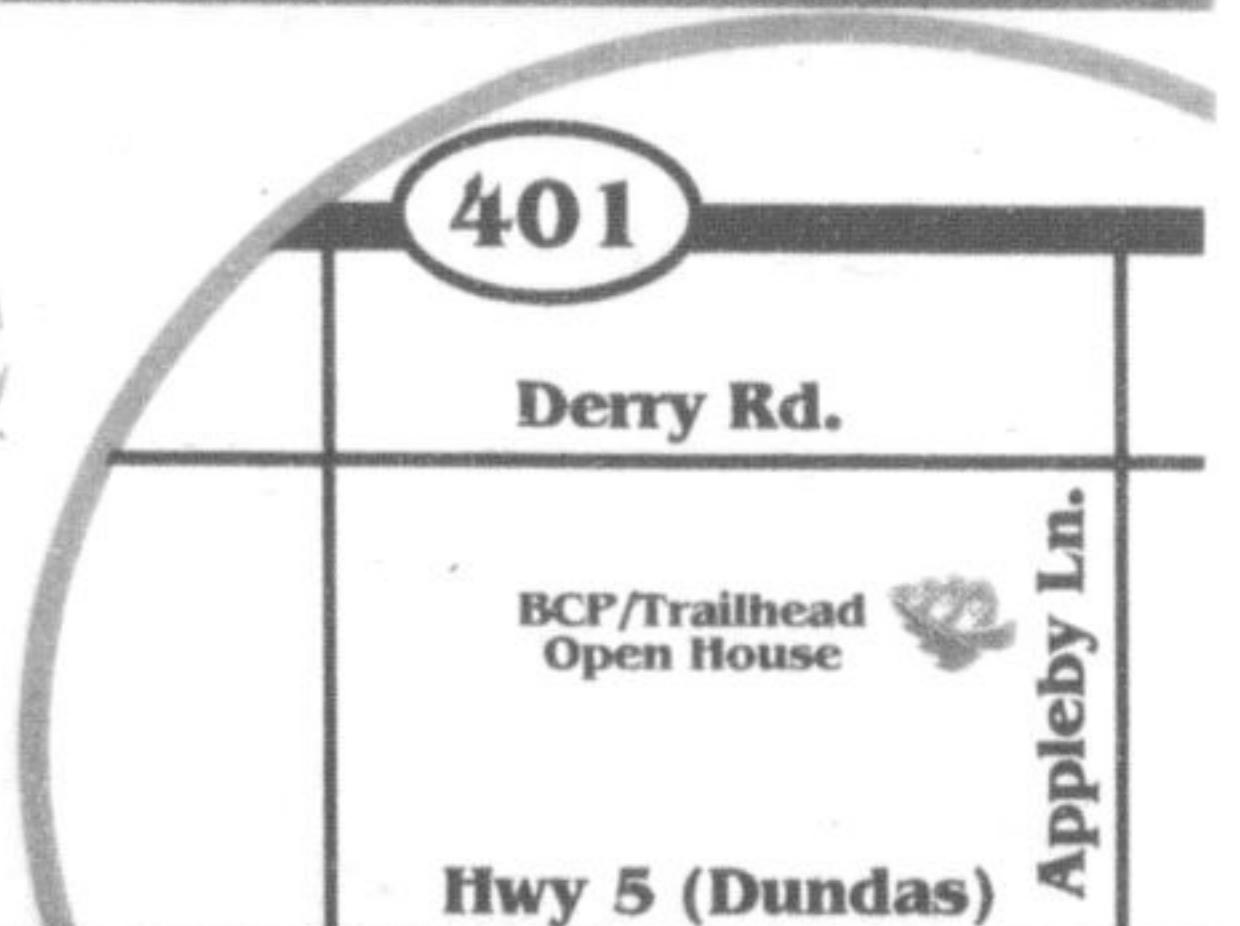
DROP IN! Find Out More!

Trailhead & BCP Information OPEN HOUSE
Wed. Feb. 18th, 2009
6:30 to 8:30 pm
5100 Appleby Line
905-331-3500

Halton District School Board
Halton's Environmental Leadership Program

Gary Allan High School

www.brontecreekproject.org
experience education



QEW