

CHRYSLER Jeep

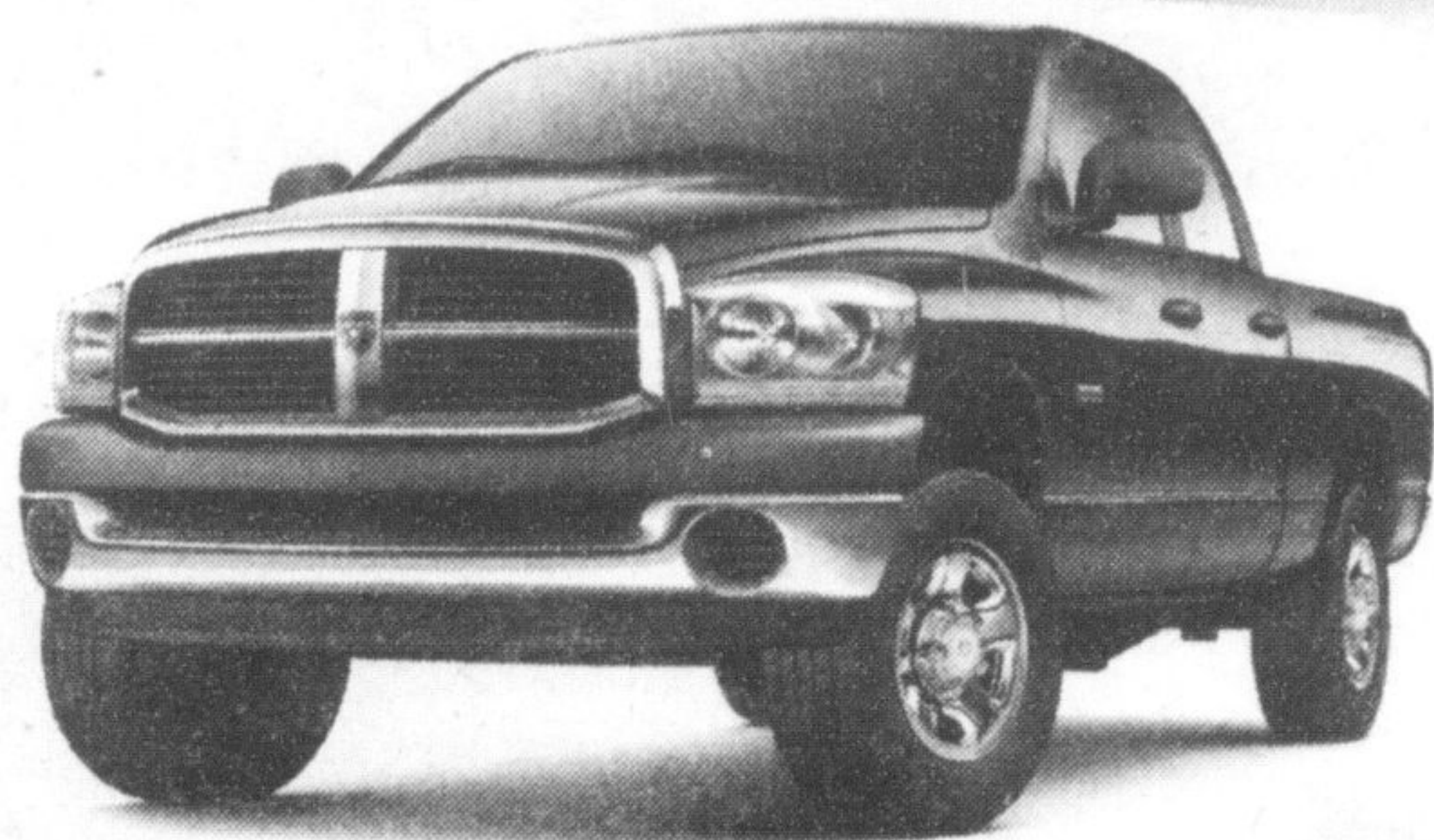
2008 SHOWCASE SELL DOWN

DON'T WAIT! YOU'VE GOT ONE WEEK ONLY TO GET A NEW 2008 FOR LESS.

BEST PRICES OF THE YEAR!

WE'LL PAY YOUR WAY UNTIL 2009!*

HURRY! ENDS OCTOBER 31ST



2008 DODGE RAM 1500 QUAD CAB®

CONSUMER CASH
up to **\$11,750[†]** On all gas ST/SXT models



2008 DODGE GRAND CARAVAN STOW 'N GO

CONSUMER CASH
up to **\$7,250[†]** On all Stow 'n Go models



2008 JEEP GRAND CHEROKEE DIESEL

CONSUMER CASH
up to **\$11,150[†]** On all diesel models



2008 JEEP LIBERTY

CONSUMER CASH UP TO **\$4,750[†]**
on all Liberty models



2008 DODGE AVENGER

CONSUMER CASH UP TO **\$2,750[†]**
on all Avenger models



2008 CHRYSLER SEBRING

CONSUMER CASH UP TO **\$3,750[†]**
on all Sebring sedan models



2008 DODGE CHARGER

CONSUMER CASH UP TO **\$8,750[†]**
on all Charger models



2008 DODGE RAM HEAVY DUTY DIESEL QUAD CAB® 4X4

CONSUMER CASH UP TO **\$9,750[†]**
on all 2500 and 3500 diesel models



2008 JEEP WRANGLER

CONSUMER CASH UP TO **\$4,250[†]**
on all Wrangler models



2008 CHRYSLER 300C

CONSUMER CASH UP TO **\$10,750[†]**
on all 300C models



2008 DODGE DAKOTA

CONSUMER CASH UP TO **\$4,750[†]**
on all Extended Cab 4x2 models



2008 DODGE NITRO

CONSUMER CASH UP TO **\$3,750[†]**
on all Nitro models



2008 CHRYSLER TOWN & COUNTRY

CONSUMER CASH UP TO **\$7,550[†]**
on all Town & Country models

chrysler.ca

jeep.ca

dodge.ca

DODGE
Caravan Kids
PROUD SPONSOR OF MINOR HOCKEY ACROSS CANADA

SIRIUS
SATELLITE RADIO
INCLUDES 1 YEAR PREPAID SUBSCRIPTION

VISIT YOUR NEIGHBOURHOOD CHRYSLER, JEEP, DODGE RETAILER

Wise customers read the fine print: * † These limited time offers apply to retail deliveries for personal use only on selected new 2008 models from participating retailers. Retailer trade may be necessary. Retailers may sell for less. Offers are subject to change without notice. See participating retailer for specific details and conditions. * We'll Pay Your Way is a limited time offer and applies to retail purchases/leases on approved credit of new 2008 Chrysler, Jeep, Dodge models (excluding Sprinter and Challenger) and new 2009 Dodge Caliber, Jeep Compass and Jeep Patriot models. Eligible finance customers will receive a cheque for up to 2 months payments at a maximum of \$500/month. Eligible lease customers will have their first lease payment paid (to a maximum of \$375) and will receive a cheque for up to 2 remaining payments up to a maximum of \$375/month. The maximum reimbursement for lease/finance payments (including bi-weekly payments) is \$1,125.00. Alternatively, customers can elect to receive a bonus cash rebate in the amount of \$750.00. All amounts include taxes. Effective October 1st to 31st, 2008. Offer is subject to change without notice. See participating retailers for complete details. † Consumer Cash includes alternative We'll Pay Your Way rebate and other incentives which may be deducted from the negotiated price of the vehicle after taxes. See participating retailers for complete details. ™ SIRIUS and the dog logo are trademarks of SIRIUS Satellite Radio Inc. ® Jeep is a registered trademark of Chrysler LLC.

