

Weekend SPOTLIGHT

Making Small Seem Big & Tall

(MS) - Many people, especially those living in big cities or young people just starting out, realize early on that space comes at a premium. Whether you're fresh out of college and need to stretch your paycheck or living in a big city with big city prices, living in a small apartment doesn't necessarily mean you need to be cramped all the time. The following tips should help you make any small space seem more spread out.

- Brighten up the room. If you're allowed to paint the walls, by all means do it. While darker colors are more popular, using bright colors to paint the walls makes a room appear more spacious. Multi-colored or patterned walls often cause the eyes to pause a lot, making a room seem smaller.

- Keep scale in mind. While it may seem as though putting larger furniture in your room will make it appear smaller, fewer, larger pieces of furniture will make the room appear more open and less cluttered. Whenever possible, keep from putting too much furniture in a small area, even if the items you're putting in are small.

- Utilize wall space. A big concern for many living in tight quarters is where to put books. While a bookcase can look nice, it can also take

up lots of space. Hang a few shelves on the wall above your desk and put your books there. The easy accessibility will still be there but now you'll have more floor space as well.

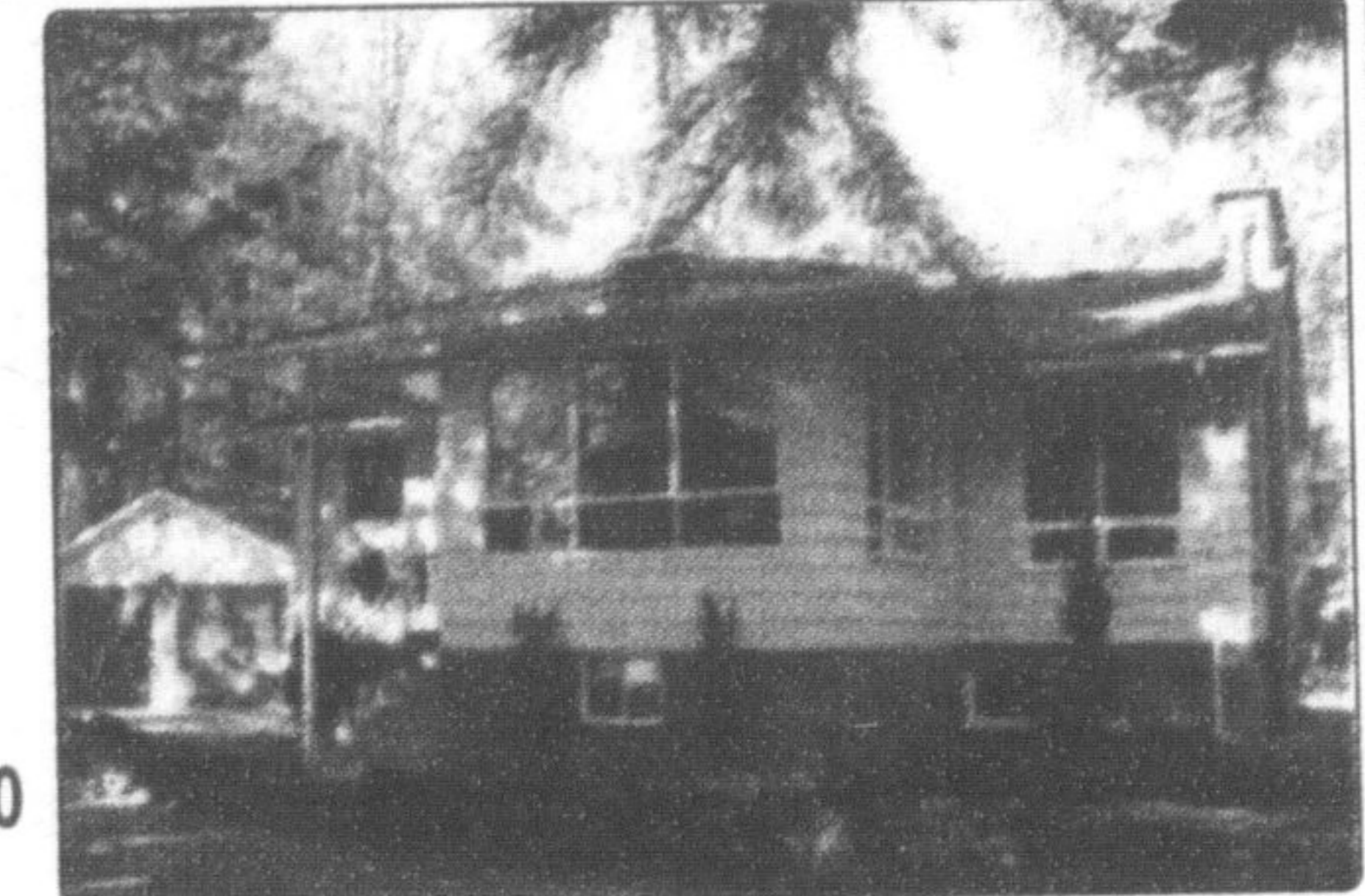
- Let the light shine in. Much like darker paint makes a room appear smaller, rooms without adequate lighting appear smaller as well. Don't block windows and let the outside light shine in. This will make the room appear more welcoming and larger. Also, make sure the natural or manufactured light is even throughout the room. Dark corners or areas without inadequate lighting make small spaces seem even smaller.

- Keep items off the floor. Try and keep your belongings in one or two designated areas throughout a room. Having multiple items strewn about will severely limit your available floor space, a lack of which makes a room appear very small.

- Use mirrors or paintings that feature depth. Mirrors or paintings that feature lots of depth can make a room appear larger than it really is. While these are certainly optical illusions, they serve a great purpose when attempting to make a small space seem less cramped.



ANN WALSH
Sales Representative
Office: 905-336-7300



COZY COUNTRY LIVING

RE/MAX
Garden City Realty
Inc., Brokerage
Independently Owned
& Operated

Adorable bungalow nestled on 2.2 acres. All the benefits of country living, and yet only minutes from everything. Loads of upgrades and extras. You will fall in love with this home and want it for yourself. Call today for an appointment.

ROBKELLY@ROYALLEPAGE.CA



OPEN HOUSE SUN 2-4

WISH NO MORE...FOR MILTON

4 bdrm Green Park home-45 Ft. Lot on a quiet street Harwood flrs & stairs top to bottom 9ft ceilings, interlock stone walkway, upgraded cabinetry! **\$404,900 276 FLEMING DR**



ROYAL LEPAGE



A DEFINITE A+ IN MILTON

4 bedroom ~ 3 bath w/ private yard Grand foyer w/vaulted ceilings, Maple hardwood flrs. Smooth ceilings, Pot lights, upgraded Kitchen & more!! **\$429,800**

ROYAL LEPAGE MEADOWTOWN REALTY BROKERAGE
Rob Kelly, Sales Rep. (905) 821-3200

\$249,900



HAWTHORNE VILLAGE

Move-in cond Freehold TH less than 1 year old. Bright, clean unit w/ 2 Br's, 1&1/2 baths. Kit w/ bkfst bar & w/o to balcony. Ceramics, door to garage, 2 car parking in DW. Call Kris Today at 905-842-7000. Photos and Virtual tour available at www.saricrealestate.com

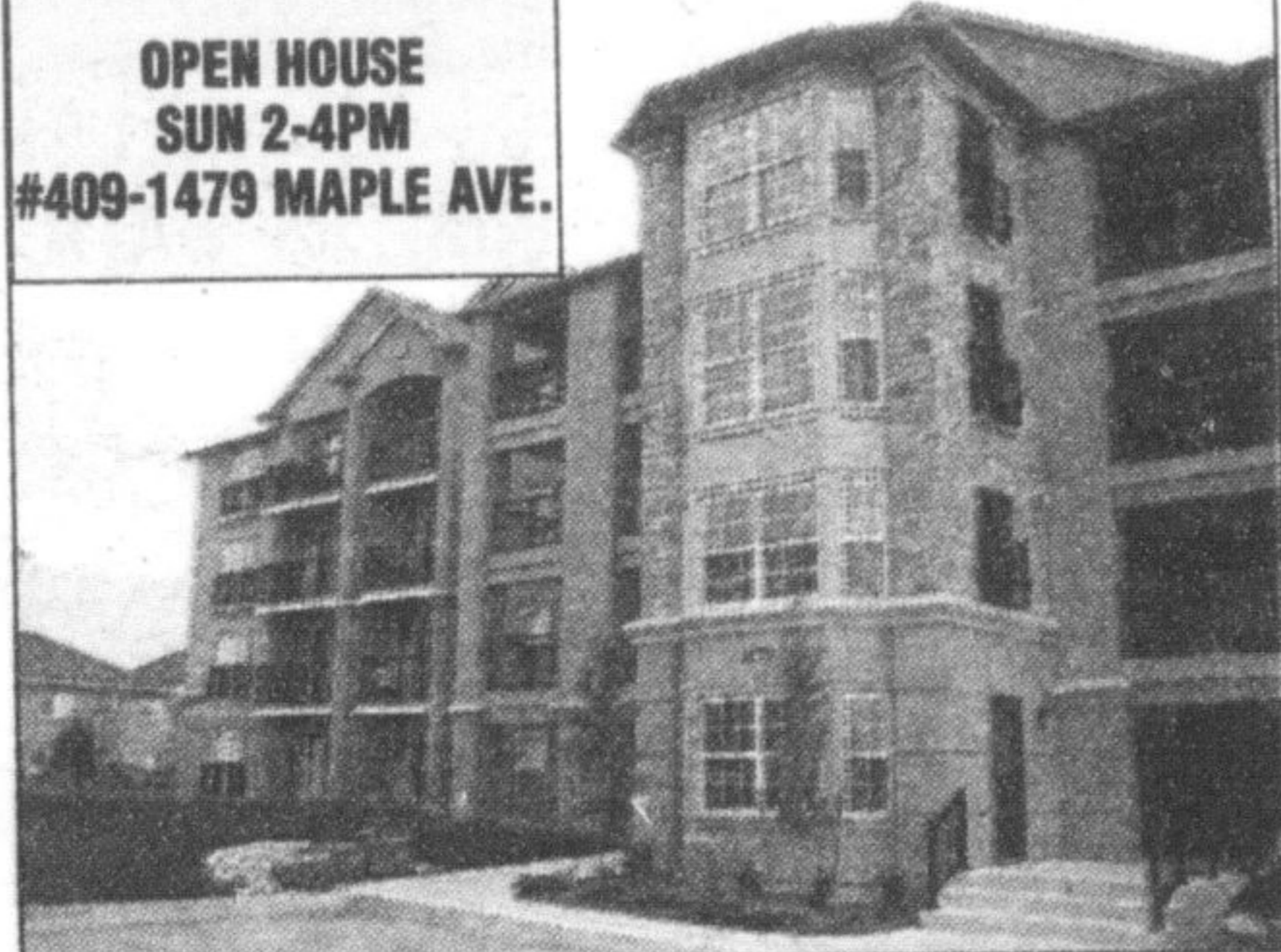
RE/MAX ABOUTOWNE REALTY CORP. BROKERAGE
KRIS SARIC, SALES REP., (905) 842-7000

RE/MAX
Aboutowne Realty
Corp., Brokerage



MIKE SCHMIDT & TARA DUNN
Sales Representatives
Office: 905-332-4111

OPEN HOUSE SUN 2-4PM
#409-1479 MAPLE AVE.



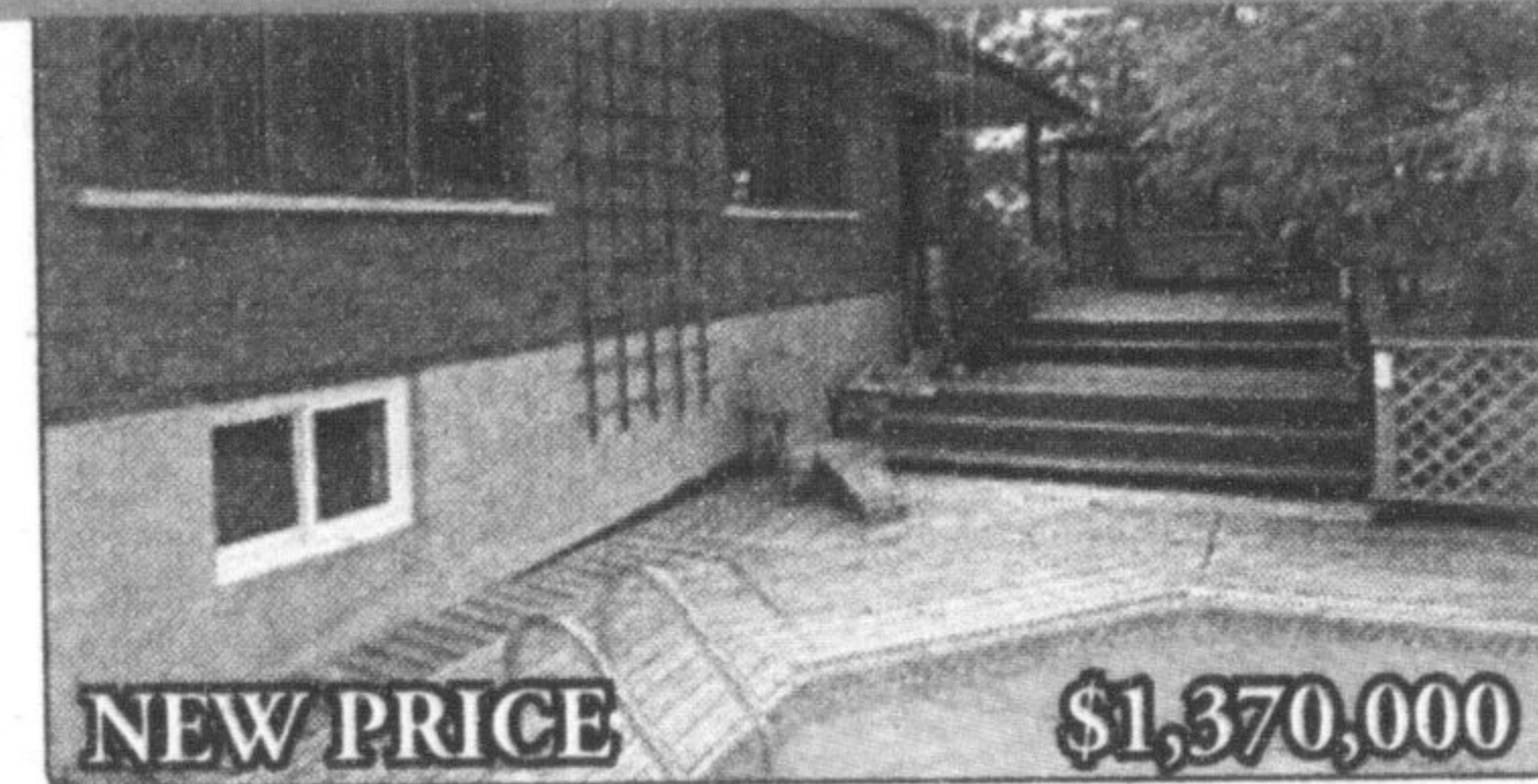
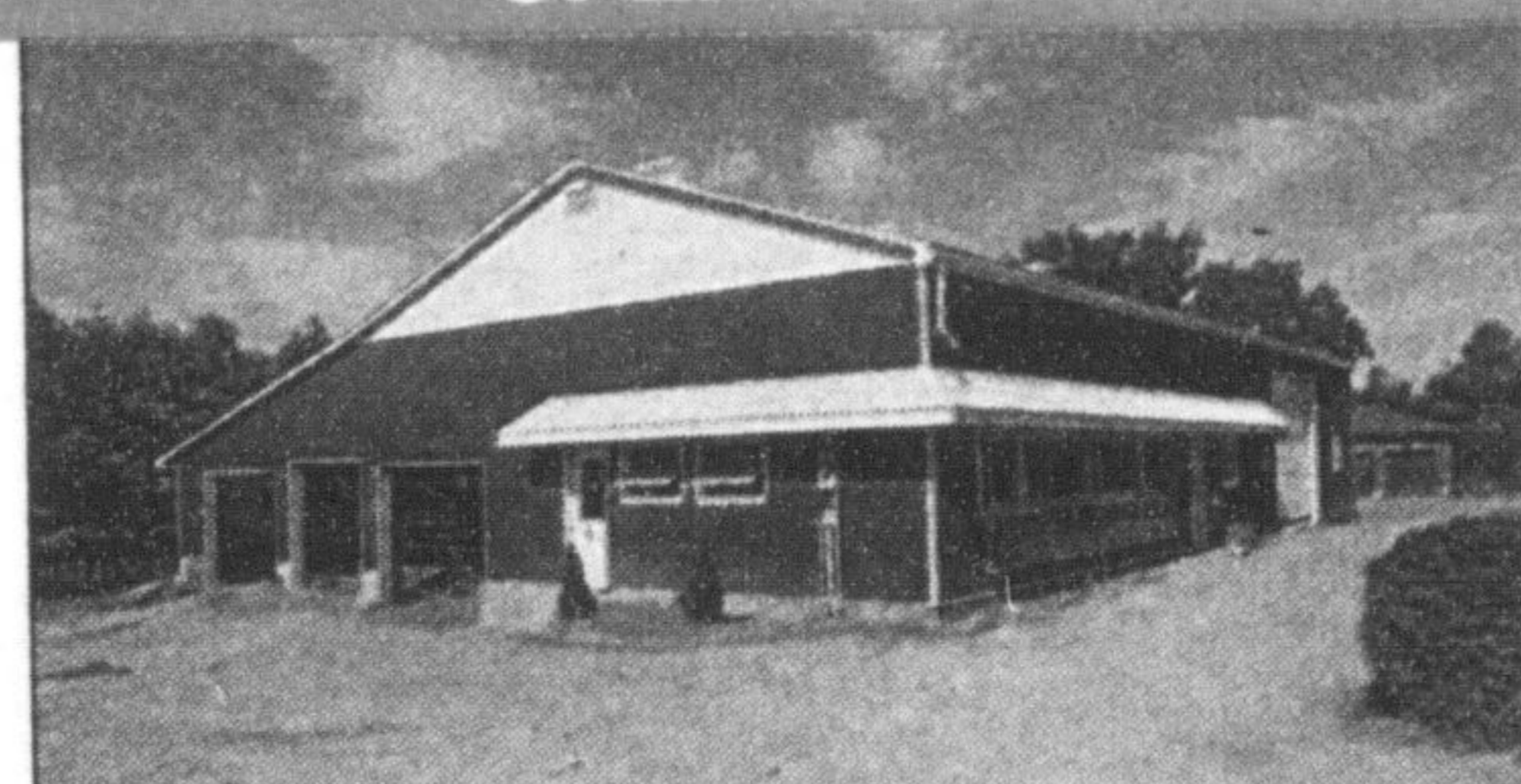
OPEN CONCEPT

Top floor unit with cathedral ceiling. Gorgeous kitchen with breakfast bar, 2 bedrooms, ensuite laundry, underground parking. Great location at back of complex. Offered at \$229,900. Call for details or stop by Sunday.

Sutton

Sutton Group Results
Realty Inc., Brokerage

OPEN HOUSE FOR A 90 ACRE SCENIC FARM



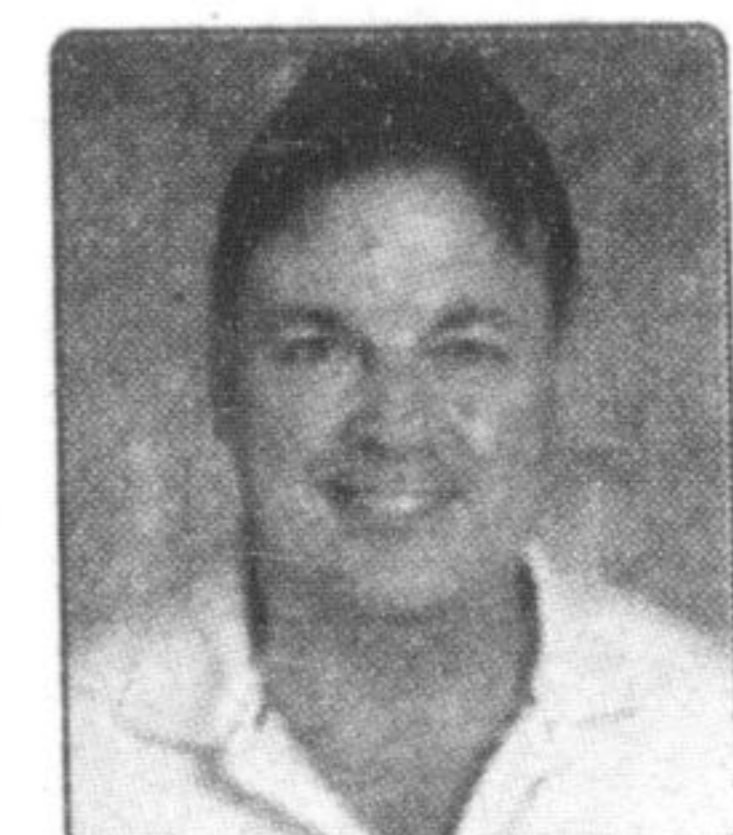
NEW PRICE \$1,370,000

OPEN HOUSE SUNDAY NOV. 2ND, 2-4 P.M. 5608 WELLINGTON ROAD 29, GUELPH ERAMOSA
401 to Guelph Line North to Hwy. 7 Left to Wellington Rd. 29 Right

Spectacular 90 Acre Scenic Farm Opportunity to have established businesses of an On Farm Agricultural Retail Store and a new 160 Goat Barn (\$350,000), 40 Acres are workable, 7 Acre Apple Orchard, Bank Barn, Forests, Pond and a 2600 SqFt Renovated Brick Bungalow. ONLY 5 minutes from Guelph and 25 min from 401 HWY. A MUST TO SEE.

SEE MORE PHOTOS www.chrisdosne.com

CENTURY 21 MILLENNIUM INC., BROKERAGE CHRIS DOSNE, SALES REP. TOLL FREE: 1-888-450-8301



Century 21

Millennium Inc.
Brokerage



\$599,900

GORGEOUS MATTAMY BUILT 4 BDRM, 4 BATH VANDERWOOD MODEL HOME!

- Family sized eat-in kitchen with S/S appliances, granite countertops, ceramic floors, custom built backsplash & a walkout to the yard
- Gleaming hardwood floors throughout the main level
- 4 spacious bedrooms & 3 full baths on the upper level



\$569,900

GORGEOUS 4 BDRM, 4 BATH 3,000 SQ FT GRACEFULLY DESIGNED EXECUTIVE HOME!

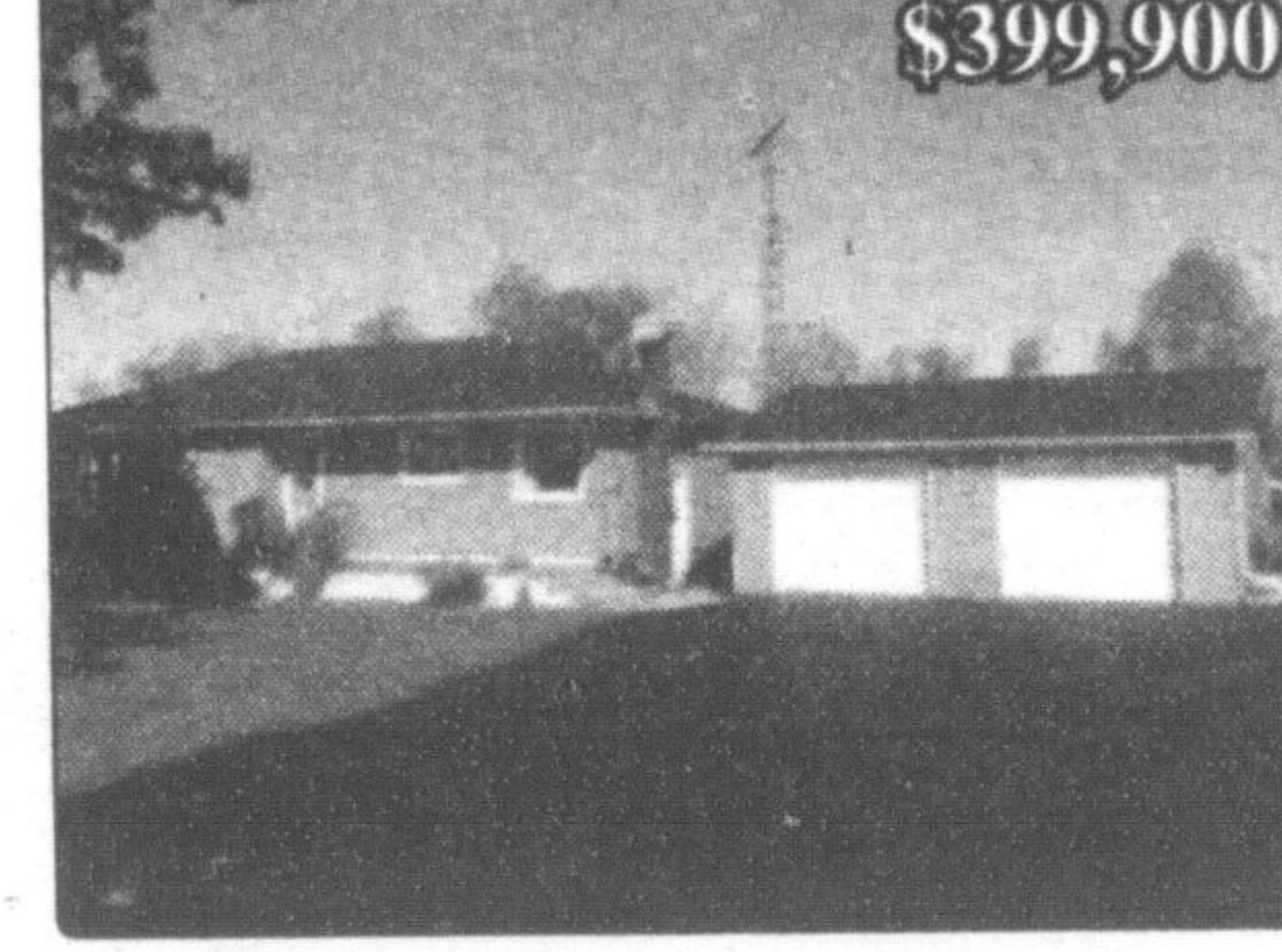
- Hardwood flooring throughout the main floor
- Modern kitchen with S/S appliances & tall cabinetry
- Main floor library/den
- 4 spacious bedrooms all with attached washrooms



\$439,900

ABSOLUTELY GORGEOUS 4 BDRM, 4 BATH GREENPARK BUILT BEAUTY!

- Combined open concept living & dining area with hardwood flooring
- Spacious modern eat-in kitchen with a breakfast area & a walkout to the yard
- Family room with hardwood floor, gas fireplace & pot lights
- 4 large bedrooms & 3 full washrooms on the upper level
- Partially finished basement with a separate entrance



\$399,900

THE COUNTRY MEETS THE CITY!

- \$\$\$ spent on renovations
- Newer bathrooms, appliances, water softener, heat exchanger, septic tank, 200 amp service, pool liner & much much more
- Close to all amenities & 5 minutes from town



RE/MAX
PERFORMANCE REALTY
INC., BROKERAGE

RE/MAX PERFORMANCE INC., BROKERAGE Sam McDadi, Sales Representative (905) 270-2000

To advertise in this feature please call **DIANE** ext. 212 at 905-878-2341 email: dianew@miltoncanadianchampion.com